



Move to Endpoint Manager

Creative tech for Better Change

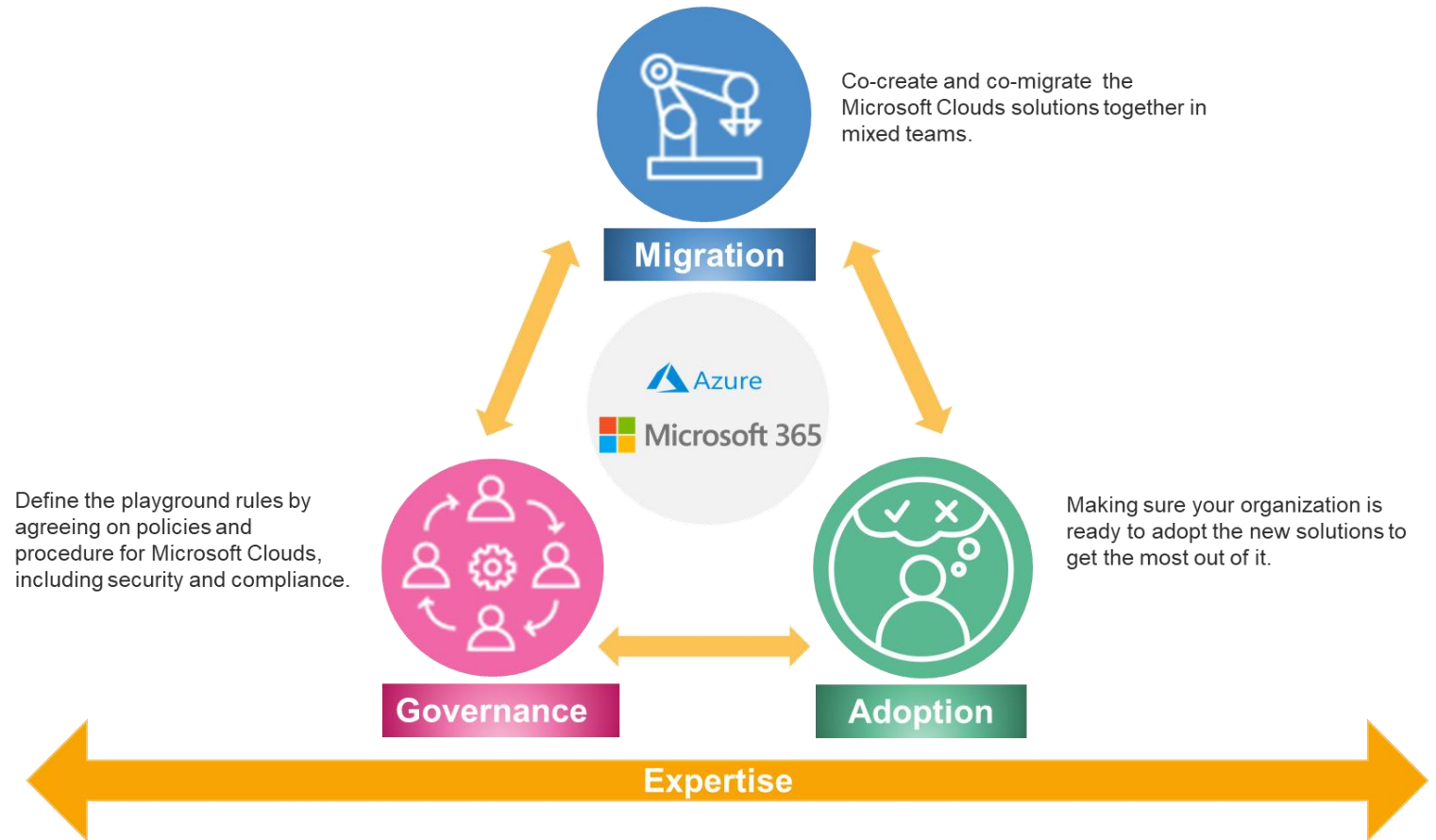




Agenda

- A holistic approach for the Microsoft Clouds
- Why move to Microsoft Endpoint Manager?
- Our vision
- Protect your data on every device with Intune
- Our methodology
- Our plan
- Our commitment

A holistic approach for the Microsoft Clouds



Why move to Microsoft Endpoint Manager?



Improve your IT efficiency thanks to the cloud

Stay current with a highly scalable architecture of globally distributed cloud services. Leverage cloud intelligence to gather insights and baselines for your security policies and configuration settings.



Support your diverse mobile ecosystem

Securely manage iOS, Android, Windows and macOS devices using a single endpoint management solution. Simplify and automate deployment, provisioning, policy management, application delivery and updates.



Protect your data with or without device enrollment

Help protect data when you're not managing the devices of employees or partners who need to access work files. Intune App Protection Policies provide granular control of Office 365 data on mobile devices.

Creative tech for Better Change

Our vision

The future of endpoint management: **Microsoft Endpoint Manager**.

Today, System Center Configuration Manager (SCCM) and Microsoft Intune manage more than 200 million devices.

They provide integrated cloud management tools and unique co-management options to provision, manage, protect and to govern endpoints and applications across an organization.

Co-management is one of the primary ways to join your existing Configuration Manager deployment to the Microsoft 365 cloud. It allows you to unlock additional cloud features such as Conditional Access.

Microsoft Endpoint Manager is the features and data convergence of Intune and Configuration Manager, enhanced with smart new actions, delivering a seamless, end-to-end management solution without the complexity of migration or disruption to productivity.

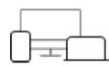
Figure 1. Magic Quadrant for Unified Endpoint Management



Protect your data on every device with Intune

Mobile **Device** Management (MDM)

Conditional Access:
Restrict access to
managed and compliant
devices



Enroll devices to
manage



Evaluate device
compliance



Deploy apps,
configuration, profiles



Delete data on
corporate devices

Mobile **Application** Management (MAM)

Conditional Access:
Restrict access to apps
that can protect
corporate e-mail or files.



Protect
applications
accessing corp
data



Report and
inventory on apps
and the usage

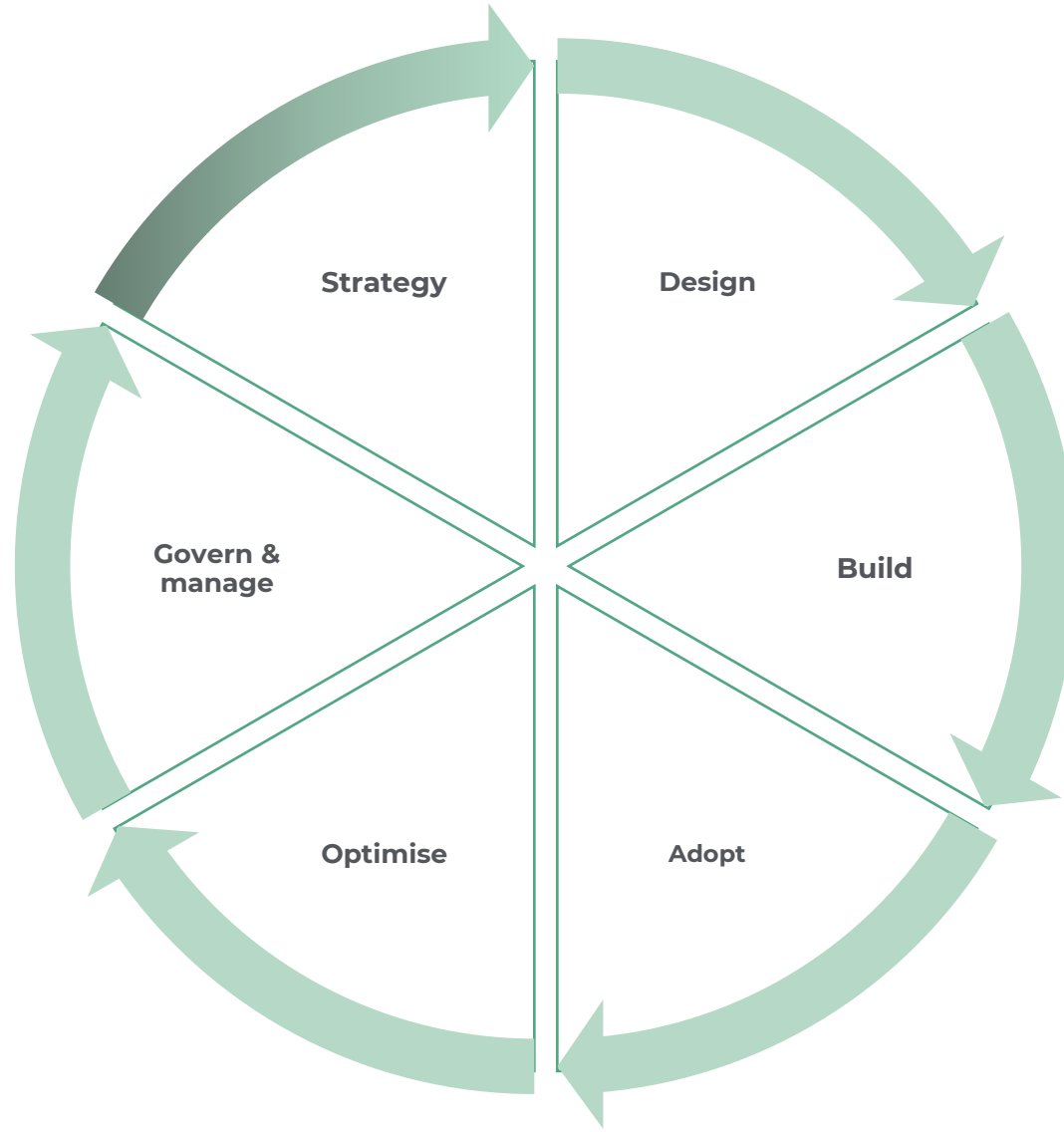


Prevent Data Loss

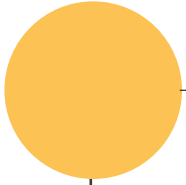


Secure and delete
corporate data in
mobile apps

Our methodology

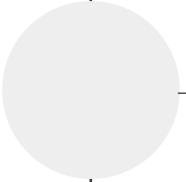


strategy.



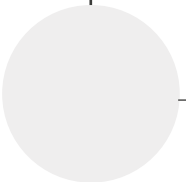
- Business outcomes
- Business justifications
- Shape digital roadmap

design.



- Build roadmap
- High- and low-level architecture
- Agree next steps

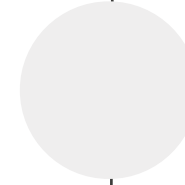
build.



- Migrate
- Transform
- Build base

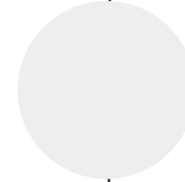


adopt.



- Plan journey (skills, organisation alignment)
- Readiness (best practice validation)
- Prioritise

optimise.



- Operational excellence
- Optimise towards innovation

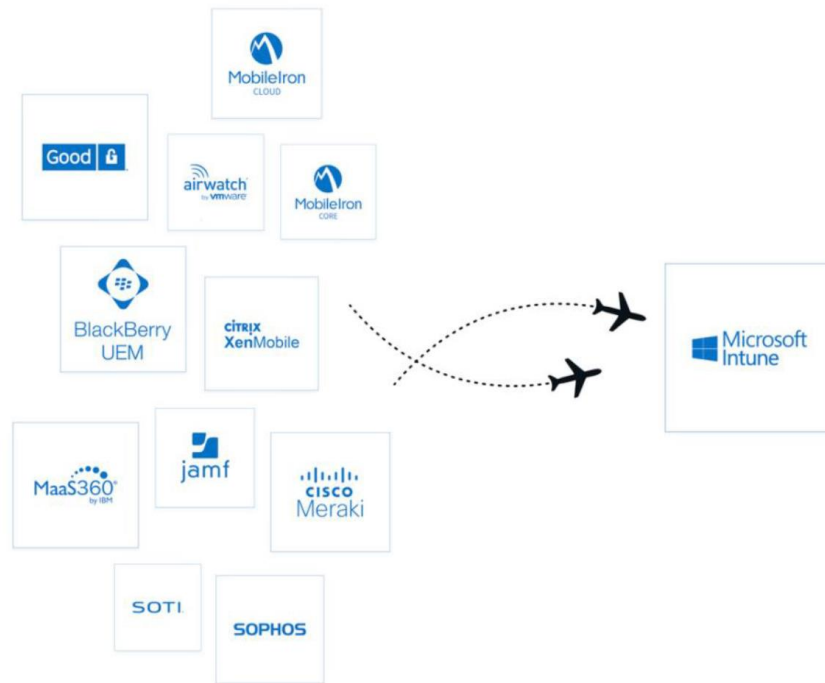
govern & manage.

- Governance methodology and maturity
- Operations baseline and maturity
- Business commitments



Partner Ecosystem

In order to support our customers in the move to Microsoft Endpoint Manager, we have partnerships with vendors like **EBF Onboarder for Microsoft Intune**, a solution that allows to migrate from many third party Unified Endpoint Management solutions.



Creative tech for Better Change

Our commitment

Quality of the technical solution

Deployment of the integrated cloud platform that provides cutting-edge productivity applications such as Microsoft Teams, Exchange Online, OneDrive, as well as intelligent cloud services and world-class security.

Proven methodology

A proven methodology guaranteeing a high quality of delivery and the satisfaction of our customers.

Project success

An efficient delivery model allowing the best migration scenarios to be quickly defined and implemented quickly.

Expertise of our consultants

Consultants specialized in collaborative services and in the implementation or migration to Microsoft Endpoint Manager.

Creative tech for Better Change

A new brand dedicated to the Microsoft partnership.

Helping you to adopt cloud enterprise-wide and explore its untapped value.

As a go-to Microsoft portfolio partner with over 1100 certifications, you can trust us to reach the highest heights of Microsoft 365 solutions, enterprise-wide, in a secure way. Embrace the value of working with a Microsoft Gold Partner with 16 gold competencies and 3 Advanced Specializations:

- Modernization of Web Applications to Microsoft Azure
- Windows Server and SQL Server Migration to Microsoft Azure
- Adoption and Change management

Our 800+ Microsoft experts will guide you through unleashing the Cloud's untapped potential.

Thank You!