



Cloud Enabler

by Devoteam

FOR SUSTAINABILITY

Multiple challenges

Sustainability is no longer optional, it is a **MUST** for companies.

Regulation



EU regulations evolve rapidly
(i.e. the Green Deal legislation package)

Compulsory reporting on the companies' footprint effective from 2024

Business



Sustainability becomes a major selection criteria for decision makers

Tender scoring up to 20% for companies internal initiatives, as well as ability to deliver sustainable tech.

Commitment



2023/2030
GHG emissions must be reduced by roughly 50% by 2030

No time to wait for the perfect solution, **time for action** based on today's technologies

People



Collaborators are more and more trained and concerned with regards to Sustainability

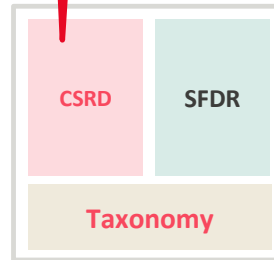
Sustainability practices become the **new normal**. It is a key to attract new talents.

ESG Regulatory Framework

what are we talking about?

Environmental
Social
Governance

Corporate
Sustainable
Reporting
Directive



Starting in 2024, companies will have an obligation to disclose their environmental and societal effects according to CSRD regulations.

CSRD disclosure requirements include:

- Scope 1, 2, and 3 emissions: impact / reduction targets
- Social impact and governance systems
- ESG risks and opportunities for the business and its impact on people and the planet



Focus on ESG performance of companies what about the reporting timeline?

NFRD

The **NFRD (Non-Financial Reporting Directive)** rules remain in force until companies have to apply the new rules of the **CSRD**.
NFRD reporting rules apply to **large public-interest companies with more than 500 employees**.

CSRD

Companies will gradually comply with CSRD reporting rules as following :

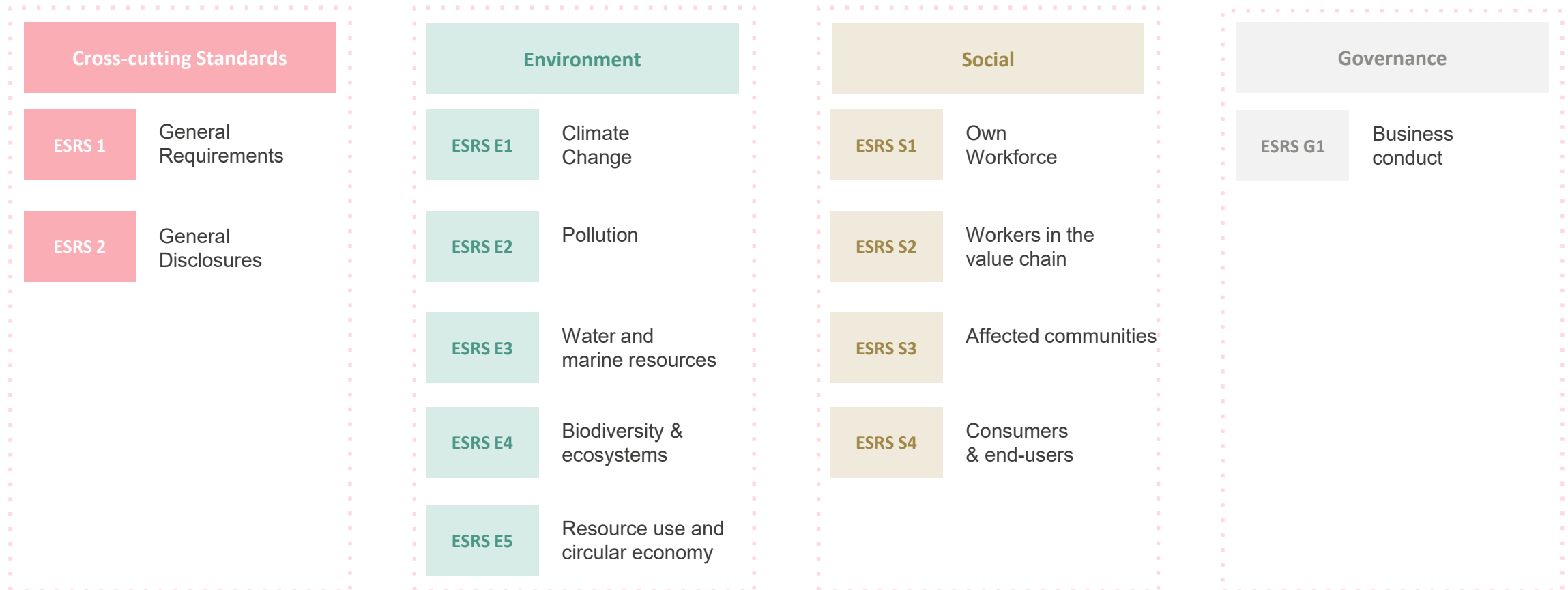
- **From January 1st, 2024 (FY2024 with reporting in 2025):**
companies that already comply with the NFRD reporting (large listed companies with more than 500 employees).
- **From January 1st, 2025 (FY2025 with reporting in 2026):**
large companies meeting 2 of the following 3 criteria: 250 employees, €40m turnover, or €20m balance sheet total
- **From January 1st, 2026 (FY2026 with reporting in 2027):**
listed SMEs fulfilling 2 of the following 3 criteria must report : 10 to 250 employees, €700k to €40m in turnover, or €350k to €20m in balance sheet total.
- **From January 1st, 2028 (FY2028 with reporting in 2029):**
European subsidiaries of non-European parent companies that generate more than €150 million in turnover in Europe and a subsidiary or branch based in the European Union.

CSRD Reporting Standards

European Sustainability Reporting Standards

The CSRD requires companies to disclose a broad range of data relating to their environmental, social, and governance practices, according to the ESRS technical standards released in July 2023.

Sector Agnostic E.S.R.S





FOR SUSTAINABILITY

Our vision

Creative tech for Better Change





We Enable Your Sustainability Program with Actionable Insights

For efficient strategies, it's essential to have actionable insights to support them.

That's why **Devoteam** has developed the '**Cloud Enabler For Sustainability**' framework to support you in your efforts to promote sustainability and address ESG challenges.

Creative tech for Better Change



FOR SUSTAINABILITY

- ★ A “Record / Report / Action” approach resulting in tailored E.S.G. reports, actionable insights and sustainable change management.
- ★ A fully integrated and flexible platform based on Microsoft Cloud For Sustainability capabilities
- ★ Includes integration of multiple data sources for insight and reporting, with appropriate data security and governance
- ★ Devoteam as a partner to improve collaboration, automation of processes and manage change
- ★ An iterative approach with Devoteam Studio delivery model

Record / Report / Action

Enterprise Record Data

Record the ESG footprint of the entire operations and value chain more accurately through your Data Platform implemented by Devoteam with Microsoft Cloud for Sustainability capabilities

Unify data intelligence to help you monitor and manage your sustainability performance.



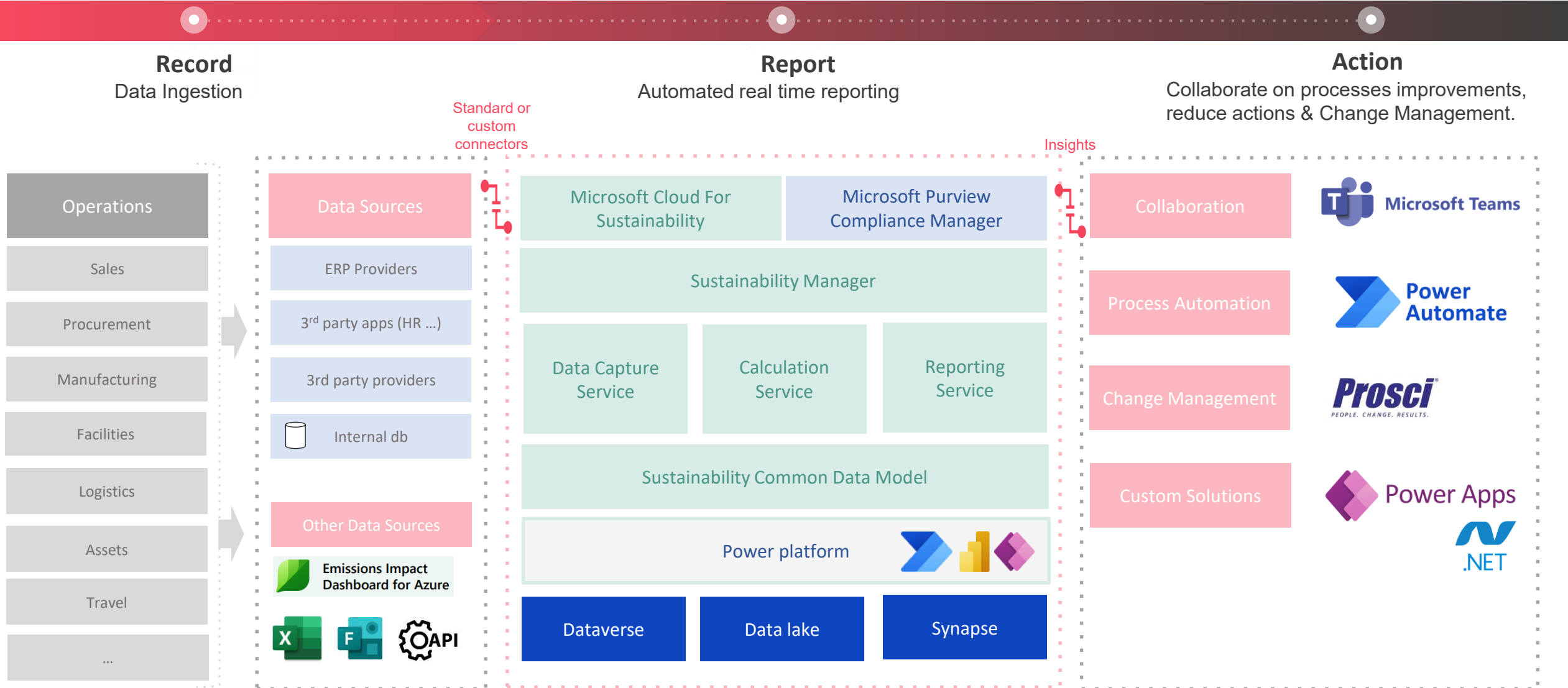
FOR SUSTAINABILITY

ESG Report

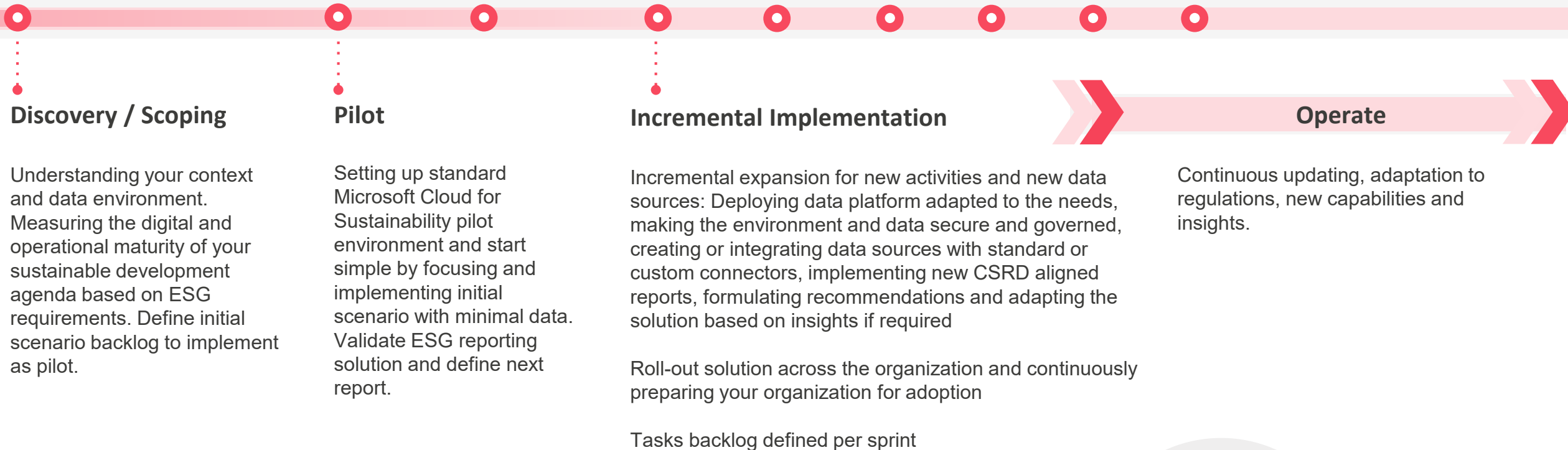
Visualize and analyse your reports following CSRD Reporting standards

Actions with CM

Based on reports, reduce actions will be accelerated by Devoteam Change Management team.



A Delivery model called Devoteam Studio An Agile Methodology to lead your sustainable development from end-to-end





FOR SUSTAINABILITY

An Agile delivery model called Devoteam Studio

- Our teams are **multidisciplinary, combining different, equally important, competencies** and experiences as one joint studio team to deliver the **maximum business value**.
- An **Agile approach that builds confidence** with every iteration
- We want to **work as strong proactive partners** and advisors, not just implementers of requirements.
- Our customers can count on the **global strength of a group of studios**.
- **Efficient tooling, robust process**, we treat everything as Code.

Creative tech for Better Change



One Team

*“We work hand in hand with you.
Our aim is to be your partner rather
than just a provider.”*

