

digia

Unlock your intelligence.





**digia**

Microsoft AppSource

**Digia DaaS**

**Introduction**

<PUBLIC >

# Content

- What is Digia Dynamic Data as a Service
- Digia DaaS architecture
- PowerBI
- Digia DaaS onboarding
- Standard and additional features
- Technical requirements



# Digia Dynamic Data as a Service (Daas)

Reporting and analytics platform custom made for Dynamics 365 Business Central.

- Your business central data ready for reporting and analytics as a service.

Azure Cloud based – Fast, Scalable and Flexible.

- Born in cloud analytics platform

Content and features can be customized according to customer needs.

- Designed for fast and flexible customization.

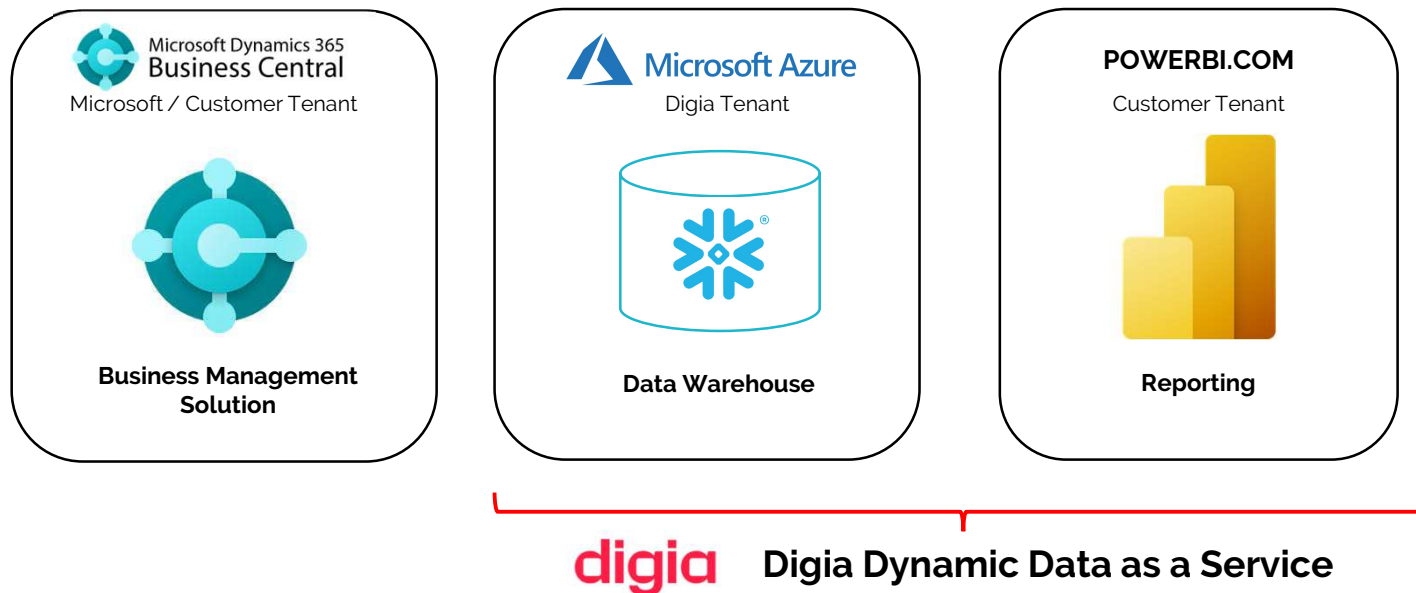
From start your data is up-to-date and ready for reporting and analyzing in PowerBI (optional)

- Optional ready made data model, measures and reports.
- in addition, any legacy reporting and analyzing tool can be supported.

Data can be used with ready made PowerBI reports, customer can develop their own or we can do it for you.

- Business central data can be combined with data from other sources in several ways as needed.

# Data Warehouse Based Analytical Reporting Service



# Digia DaaS – Business Central reporting in the cloud

## Power BI

DaaS brings interactive dashboards on Business Central data. You can use DaaS PowerBI reports or customize your own on top of DaaS dataset. Use PowerBI reports i.e. in MS Teams or within Business Central.

## Carefree

DaaS is hosted on reliable Microsoft Azure cloud platform. Digia provides necessary resources for fast processing and upkeep to be reporting compatible with Business Central updates.

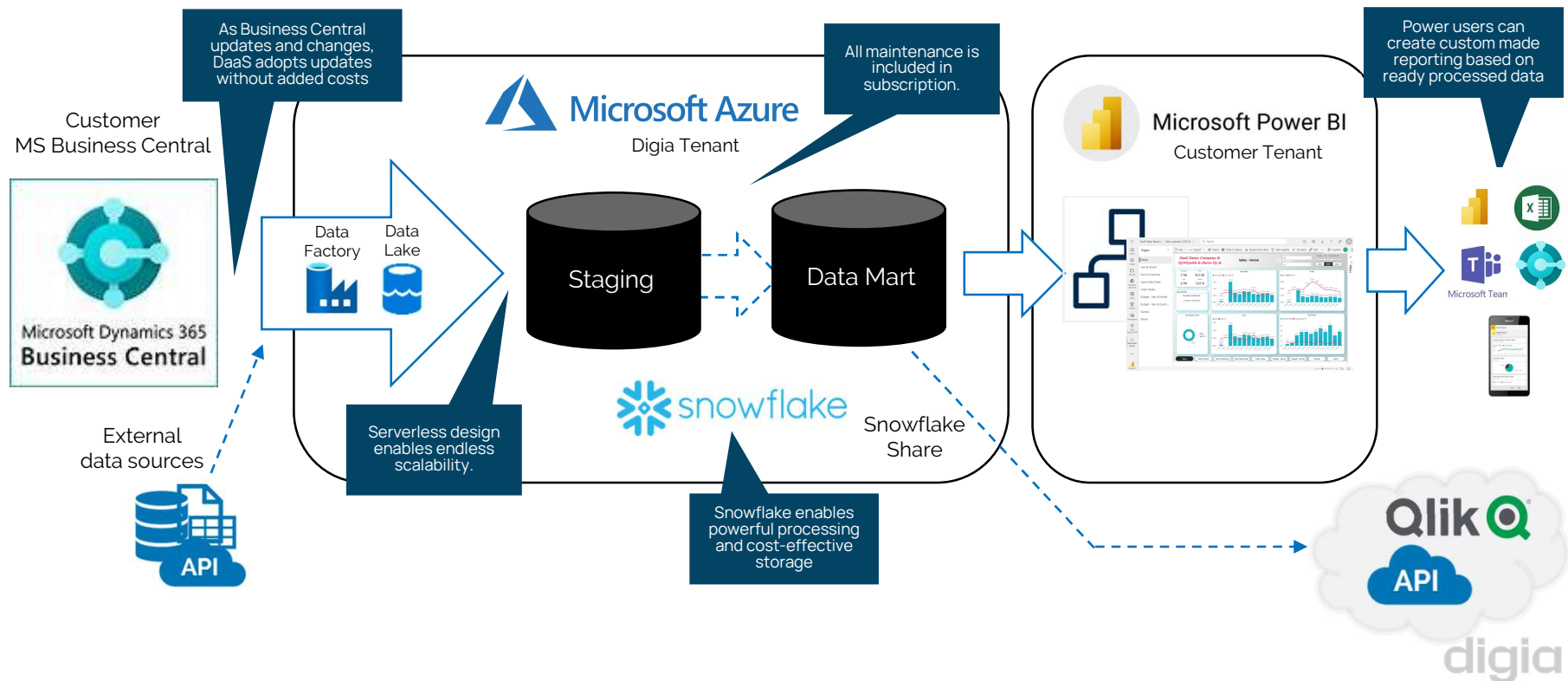
## Customizable

DaaS supports any processing and calculation your data needs to get needed insights. It creates platform for fast and flexible customization. Even large calculations are processed fast with Snowflake database.

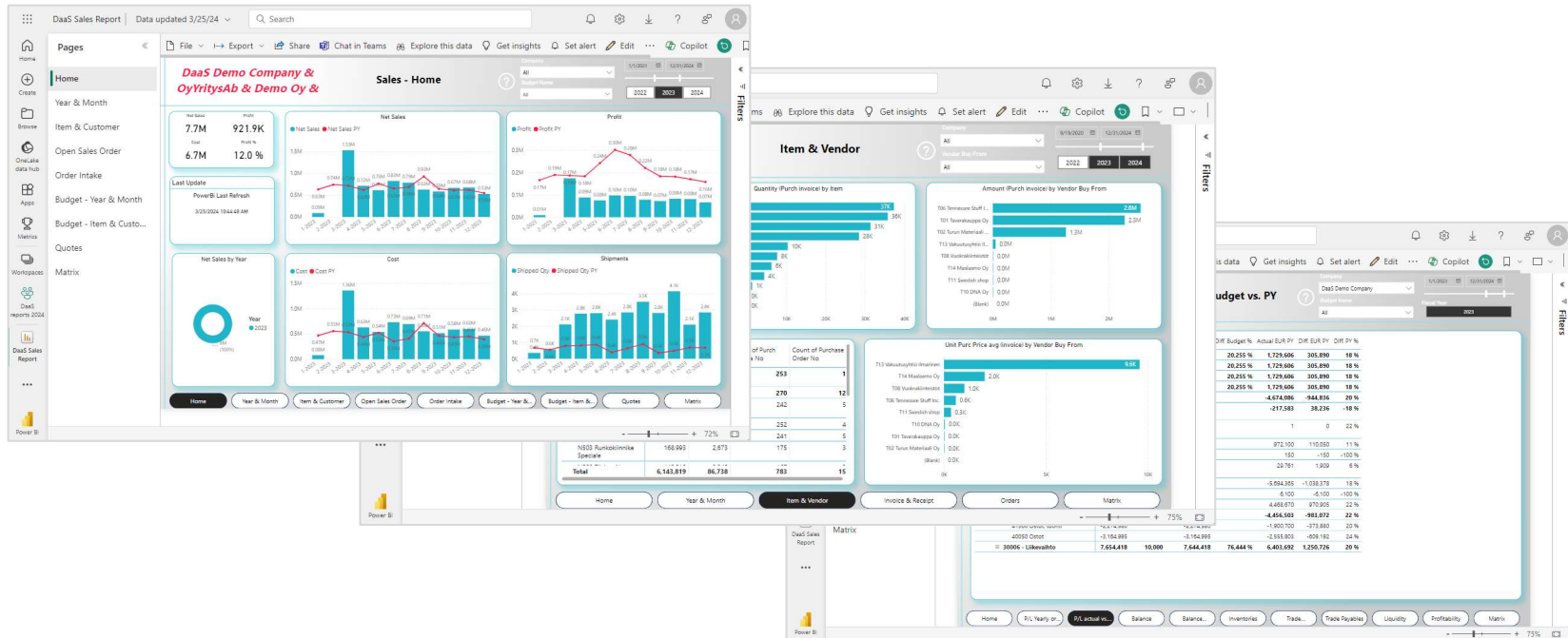
## Expandability

Almost any data source can be used with DaaS to expand reporting with relevant data. DaaS can be used to feed data to legacy data warehouse or reporting tools. Cloud based platform scales up and out according to customers individual processing needs.

# Digia Dynamic Data as a Service – Architecture



# Examples of ready made PowerBI reports in Digia DaaS





# PowerBI



Power BI is a powerful business intelligence software tool developed by Microsoft that allows users to visualize and analyze data with speed, efficiency, and understanding.

It is designed to take data from various sources, create useful insights, and enable users to make informed decisions quickly.

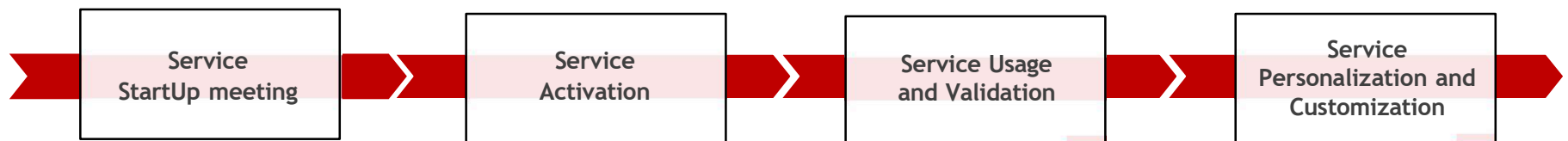
The tool consists of several components, including Power Query, Power Map, Power Pivot, and Power View, which work together to provide interactive reports, compelling visualizations, and data analysis capabilities.

Users can connect Power BI to a wide range of data sources, both on-premises and in the cloud, to gather all information in one central location for easy access.



# Digia DaaS Onboarding Process

- Service StartUp Teams meeting
  - Digia DaaS presentation and walk-through, technical requirements
- Service Activation
  - User permissions & data transfer and processing
- Service Usage and Validation
- Service Personalization and Customization



# Digia Dynamic DaaS offering (standard & options)

	Standard features (standard price)	Additional features & Options
<b>Data sources</b>	Business Central standard data. Includes Business central reporting expansion.	Business central custom data and any Azure Data Factory supported data source.
<b>Data model</b>	Data model for standard Business Central data	Customer specific modifications to database, datamodel and PowerBI reports.
<b>Reporting</b>	Standard PowerBI Dataset published and ready to use for customers PowerBI reporting on selected areas.	Ready to use PowerBi reports published to customers PowerBI.com. Ready made PowerBI views for Business Central integration. Any reproting and analytics tools can be used (SQL) . Custom made PowerBI reporting.
<b>Data refresh</b>	Nightly data refresh from Business Central (5 / week).	Additional refreshes scheduled as needed.
<b>Users</b>	No user limit to use PowerBI-dataset	
<b>Updates and Upgrades</b>	Business Central updates are supported. DaaS Service upgrades twice a year with new features.	Maintenance of custom featured are agreed separately.
<b>Platform maintenance</b>	All maintenance of standard features included.	Maintenance of custom featured are agreed separately.
<b>Processing resources</b>	As much as needed for nightly business central refresh to PowerBI.com	Dedicated processing power can be allocated to customer or specific data processing task.
<b>Data quantity</b>	Business Central standard data for current and 3 years history. No archiving features.	Up to limitless data from business central and additional data sources.

# Digia DaaS Technical Requirements

## Microsoft Azure & Data Warehouse

- Azure App Registration for enabling Azure ADF dataloading from customer Business Central to Digia DaaS Snowflake database.

## Power BI

- In trial usage, customers can use Digia powerbi.com Power BI reports with Digia Power BI user accounts.
- When the trial period is over, Digia DaaS Power BI reports are published to the customer powerbi.com service.
  - Azure App registration / Service Principal is needed for publishing reports.
  - Customer Entra ID account with Power BI Pro license for Digia report administration and maintenance

digia

Unlock your intelligence.

