

## EXCLOUD

Our Cloud Solution Architects provide consultancy, planning, architecture, implementation, and support of Microsoft Cloud solutions and 3rd party solutions running on Azure. Our experts will provide your team with The BEST practices and guiding principles to a successful implementation, for which we will always commence with a DLD that contains a tailor-made Architecture Schematics, SOW, and TOC.



### Microsoft CSP

As Microsoft's provider, we supply our customers with Microsoft Cloud Solution Provider Program (CSP). The program is designed to provide you with Microsoft's public Cloud subscriptions such as Azure, Office365, and Microsoft's security solutions. But it is more than just a licensing platform; within CSP you get a full managed services package that include licensing, support, consultancy, and billing in a flexible module with a monthly invoice directly from us - and it's all included in your monthly Microsoft Cloud consumption!

### Microsoft Azure

There are plenty of reasons to integrate Microsoft Azure into your existing Datacenter strategy, including: bursting workloads, deploying a hybrid architecture beyond your on-premises Datacenters, and maintaining a disaster recovery plan. Microsoft Azure is the world's leading versatile Cloud platform. With Azure you may deploy, scale, and manage applications across Datacenters, and allow the creation of applications through using multiple languages, tools, and frameworks - all in one stop.



## Services

### Architecture Design

Cloud Solutions Design is based on architectural procedures and methods declared as The BEST practice by the Vendor. Cloud Architecture defines the components as well as the relationships between them. Our Cloud Architects will convert the technical requirements of a project into the architecture and design that will guide the final solution BEST for you!



### Cost Optimization & FinOps

Financial planning and optimization are part of a main criteria for a successful deployment and maintenance of Cloud environment. We will review your current environment and aim for reducing your Cloud spend by identifying mismanaged resources, eliminating waste, reserving capacity for higher discounts, right-sizing computing services to scale, and building a thorough report. All this along with the guidance you need to be sure that your Cloud spend is productive and efficient.



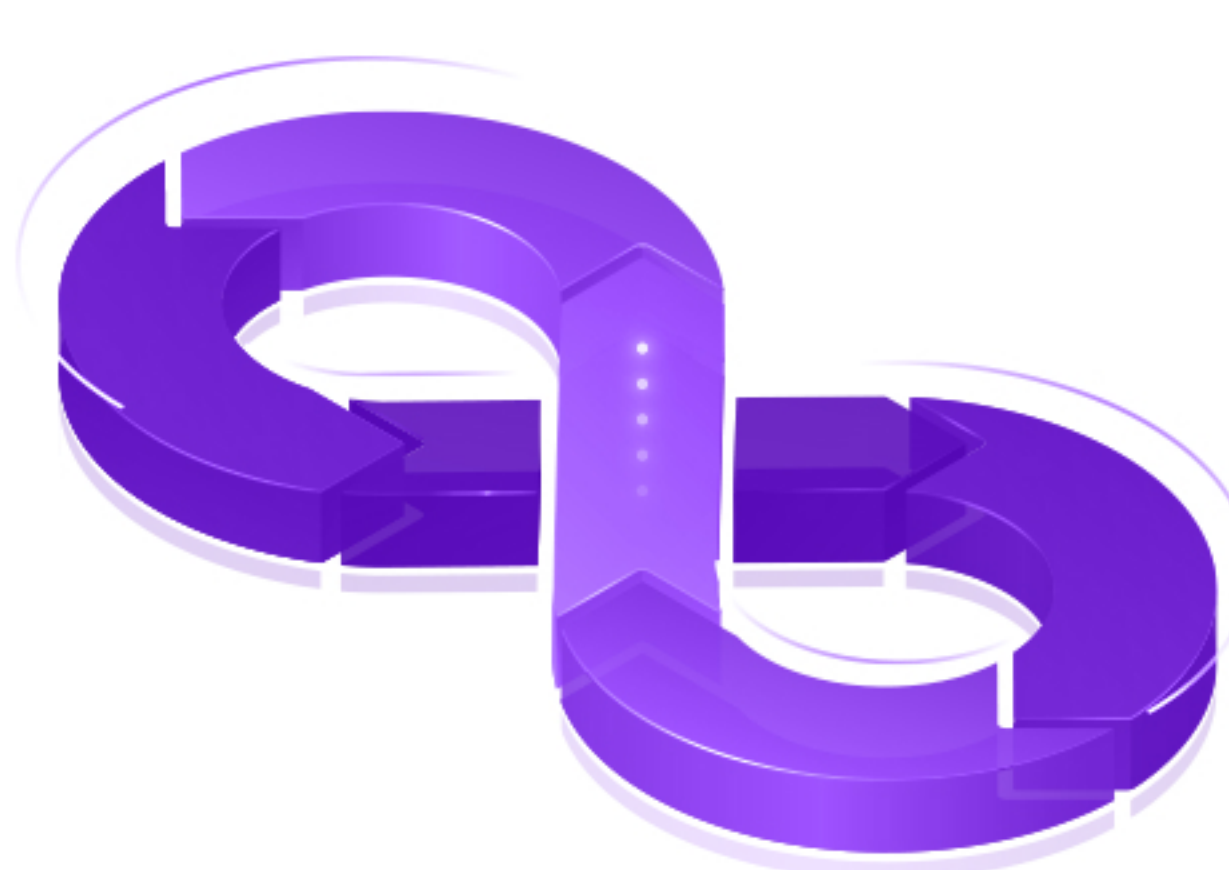
### Multi-Tier Support

DEXCloud Support services are provided in a 24x7 basis, or in regular business hours with response services that can level up to 2 hours through the next business day in a multi-tier module. As a managed client of ours, you will be handled by our dedicated Support Engineers that will know your site fluently. We have your business' best interests in heart, so if we chance upon an opportunity for improvement, we will take care of it!

### DevOps

DevOps is the combination of cultural philosophies, practices, and tools that increase an organization's ability to deliver applications and services at high swiftness. Cloud computing environment, by its nature, provides DevOps automation with a standard and centralized platform for testing, deployment, and production. DevOps culture, practices, and tools serve high performance via quicker construction of better products. This improved collaboration and productivity is also integral to achieving business goals. Our architects build and provide DevOps solutions, tools, CI/CD pipelines, and procedures BEST fitted to your needs in order to help you run your operations more efficiently. Our architects assist Dev teams with planning through delivery, and automation of the delivery process to the Cloud in order to:

- Improve deployment frequency.
- Achieve higher speed for marketing.
- Improve the mean time for recovery.



### Cloud Operation Center (CLOC)

DEX CLOC is manned by highly trained Support Engineers, Cloud Specialists, and advanced management tools built for complex Azure Cloud architectures. our Cloud Operation Center handles with:

- Monitoring your system for security, availability, and performance issues.
- Facilitating problems before they escalate.
- Meeting our Service Level Agreements (SLAs).
- Generating reports that provide insightful information.
- Forecasting demands for computational resources.
- Providing aid in Cloud operation activities.

### Managed Services

Without a comprehensive Cloud management, your business is susceptible to security threats, Data loss, and costly downtime. With DEXCloud Managed Services you can be serene and leave the complexities of managing your workloads to us.

## Solutions



Cloud Migration



Cloud Security



Hybrid



Application Modernization



Kubernetes



ELK

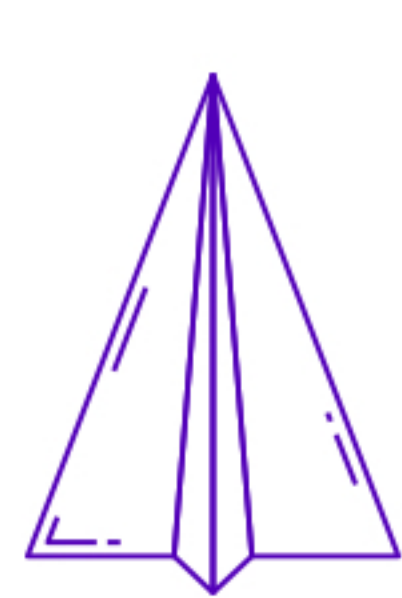


HPC & GPU



VDI

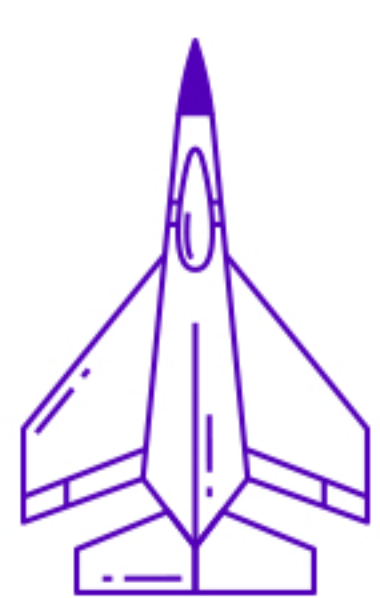
## Starting Packages



### Free System Overview

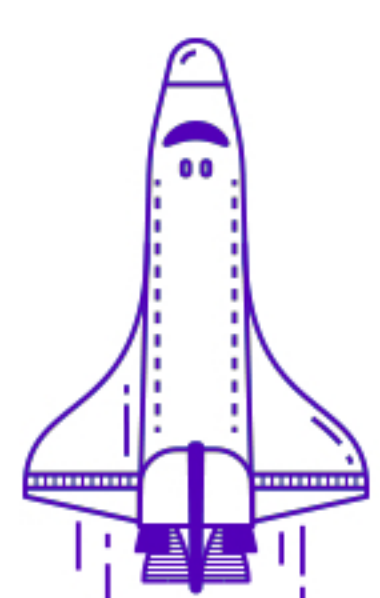
Free system review of your current architecture or a future design by our Solution Architects. This includes an intro meeting in which by the end you will receive:

- Summary of the review meeting.
- Statement of work.
- Total Cost of Ownership (TCO).



### Microsoft License Planning

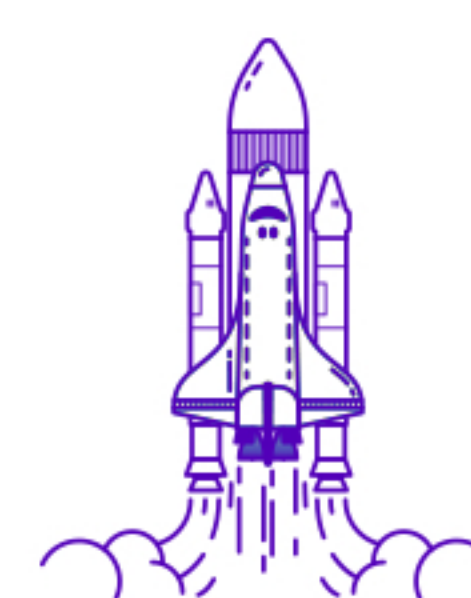
We know Microsoft Cloud Licenses can get confusing. In this package, we go over your needs and run an assessment of your present licenses and tools to gather information about your current Microsoft product in use. At the end of this process you will receive a full recommended Licensing List and a CSP offer that covers all your needs.



### High Level Design

Full system review of your current architecture and a planning of a new Cloud topology design by our Solution Architects. At the end of this process you will receive a full HLD document that includes:

- Design Summary.
- Topology Diagram.
- Project SOW.
- Component Overview.



### Azure Workshop

Together we will cover-up a half day workshop in which we will drill down to guidance on the Azure services that relevant to your organization:

- Cloud Architecture.
- Security and Compliance.