

# OUR CLOUD MANAGED SERVICES

**Our team of experts will ensure that your Microsoft 365 and Azure solutions are running smoothly, allowing you to focus on what really matters - growing your business.**

With our unparalleled customer service and 24/7 support, you can rest assured that your cloud solutions are in good hands. Say goodbye to the headaches of cloud management and hello to the peace of mind that comes with Cloud Managed Services.

We provide comprehensive cloud services, including migration, management of user accounts and data, security, compliance, and support. Our goal is to ensure your cloud solutions operate efficiently, safely, and cost-effectively. Choose Cloud Managed Services for hassle-free cloud computing.



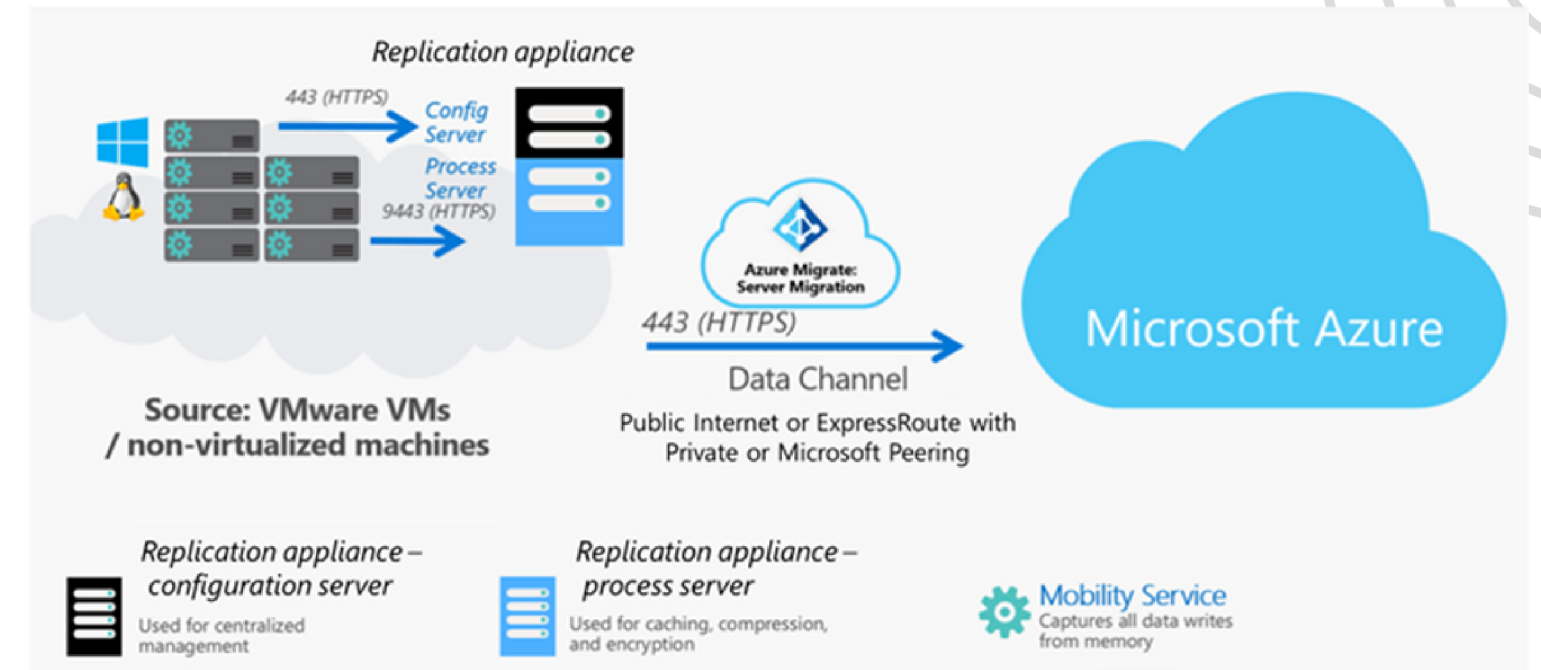
# AZURE SOLUTIONS

## Assessment Overview

- An Azure solution assessment is a critical step in ensuring the optimal performance, Security, and compliance of your Azure workloads. It involves using a range of tools and approaches to evaluate your workload and identify any issues that may be impacting its performance or security.

- The assessment process typically involves identifying the scope of the assessment, determining the assessment approach, using native Azure tools and third-party tools for assessment, performing the assessment, reviewing the assessment results, developing a remediation plan, and implementing the remediation plan.

- Native Azure tools such as Azure Advisor, Azure Security Center, Azure Monitor, and Azure Policy can provide valuable insights into your workload's performance, security, and compliance. Third-party tools such as CloudHealth, Cloudyn, and CloudCheckr provide more advanced capabilities and can help you identify issues that native tools may miss.



# AZURE SOLUTIONS

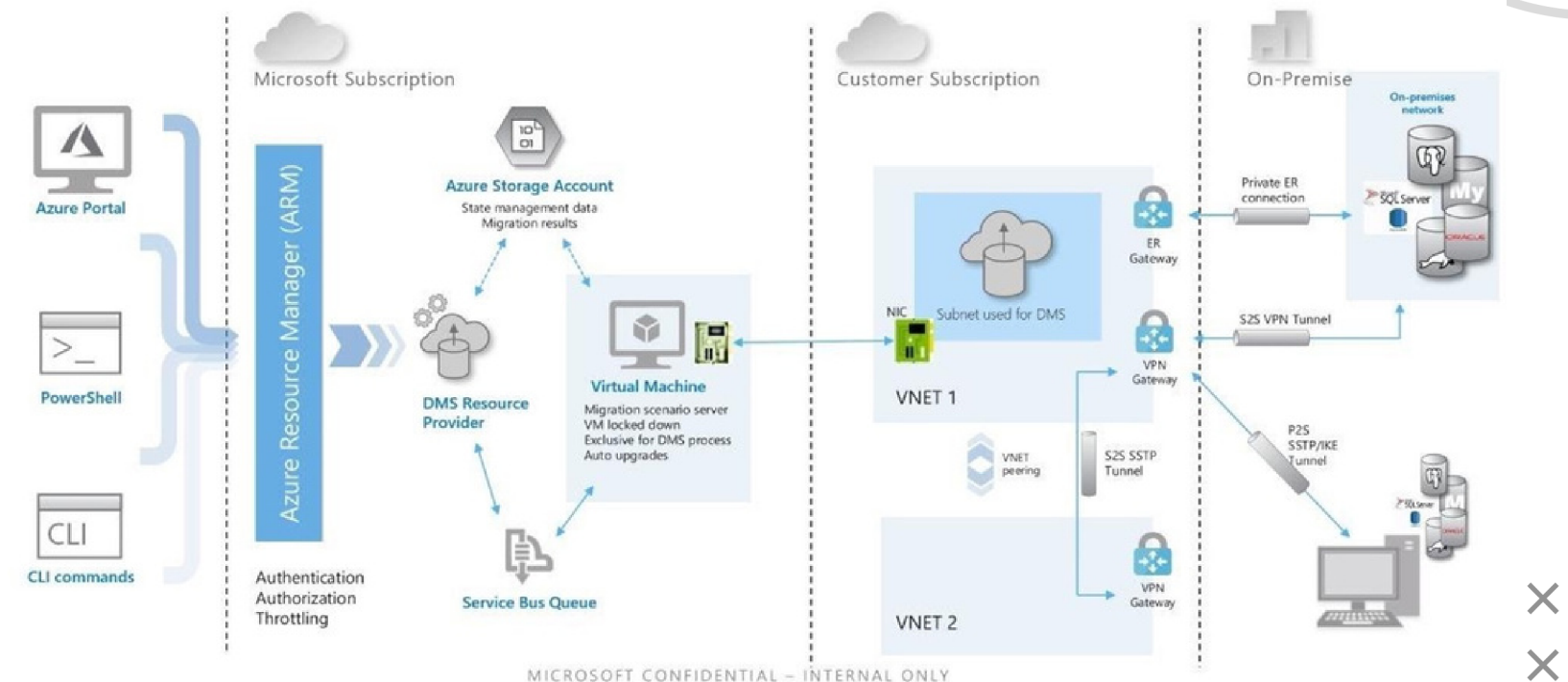
## Assessment Overview (Continued)

- After performing the assessment, it's important to review the results to identify any areas that require attention. Issues may include security vulnerabilities, performance bottlenecks, or compliance issues. Once issues have been identified, a remediation plan should be developed to address them, with the steps required to address each issue clearly outlined.

- Implementing the remediation plan may involve making changes to the workload configuration, deploying new code, or applying security patches. It's important to validate that the remediation plan has resolved the issues identified during the assessment.

- Performing an Azure solution assessment is a critical step in ensuring the optimal performance, security, and compliance of your Azure workloads. By following a structured approach and using a range of tools and approaches, you can identify and address any issues before they have a significant impact on your workload's performance or security.

## Azure Database Migration Service



# HIGH LEVEL AZURE SOLUTION

## Assessment Steps

01

### Perform the Assessment:

This involves using the native and 3rd party tools to gather data and analyze the application and data workload. Depending on the tools used, this may involve running scripts, analyzing logs, or using the tools' dashboards and reports. The 3rd Party tools we will be using are CloudPilot & CloudRecon.

02

### Review Assessment results

After completing the assessment, we shall review the results to identify any areas that require attention. This may involve identifying security vulnerabilities, performance bottlenecks, or compliance issues. It's important to prioritise the issues based on their severity and impact on the workload.

03

### Develop Remediation Plan

This plan should include the steps required to address each issue, including any changes to the workload configuration or code. We will also establish a timeline for implementing the remediation plan.

04

### Implement Remediation Plan

Implement the remediation plan to address the issues identified during the assessment. This may involve making changes to the workload configuration, deploying new code, or applying security patches. It's important to test the changes thoroughly to ensure they don't introduce new issues or impact the workload's performance.

# HIGH LEVEL AZURE SOLUTION

## Assessment Steps

(Continued)

05

### Validate Results:

After implementing the remediation plan, validate the results to ensure that the issues have been resolved.

This may involve running additional tests or monitoring the workload to ensure that the performance, security, and compliance issues have been addressed.

06

### Monitor Workloads:

Monitor the workload to ensure that it remains optimised and secure. This involves using the same tools and approaches used during the assessment to monitor the workload's performance, security, and compliance.

Regular assessments and monitoring can help you identify issues before they have a significant impact on your workload's performance or security.

07

### Design New Architecture:

After identifying and addressing any issues in the existing architecture, it's important to design a new architecture that meets the requirements of the workload. This may involve making changes to the workload's configuration, code, or infrastructure.

When designing the new architecture, consider factors such as scalability, availability, performance, security, and compliance.