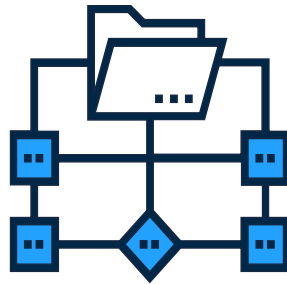


Windows Virtual Desktop

Optimize your desktop virtualization experience to leverage the power of a modern cloud



**Expand capabilities
with the best
virtualized end-
user experience**



**Realize more
efficient and
simplified
management**

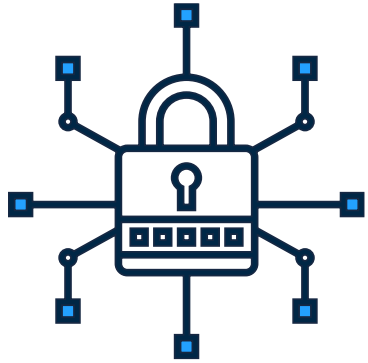


**Ensure security
and modernization
with a
standardized,
global cloud**



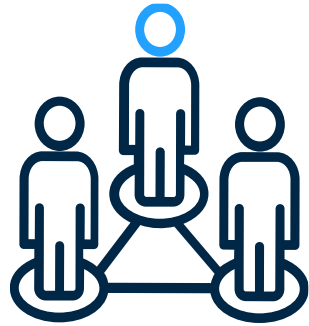
**Significantly
reduce costs
without
compromising
quality**

Virtualisation Scenarios



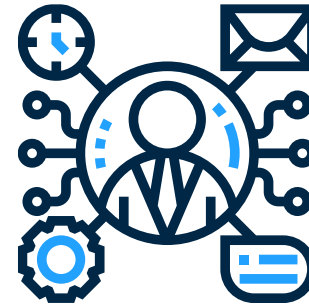
Security and regulation

Financial services
Healthcare
Nonprofit
Government



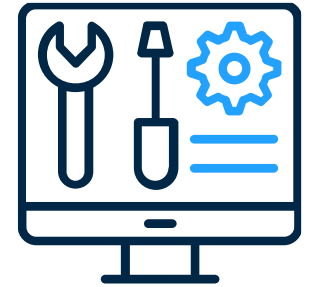
Elastic workforce

Mergers & acquisition
Education
Short term employees
Board & partner access
Contractors & volunteers



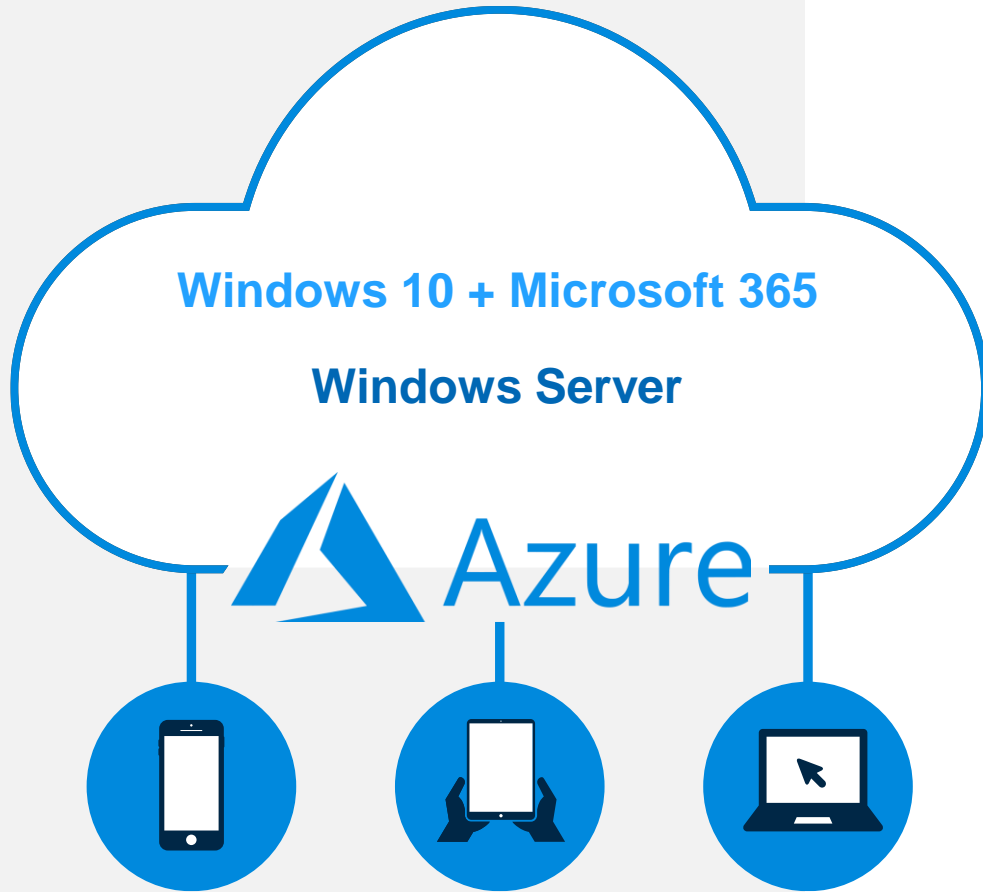
Specific employees

BYOD & mobile
Call centers
Branch workers
Field & Frontline workers



Specialized workloads

Design & engineering
Legacy apps
Software dev test



Covered by the Azure Migration Program, ensuring the most cost-effective, frictionless way to move to the Cloud

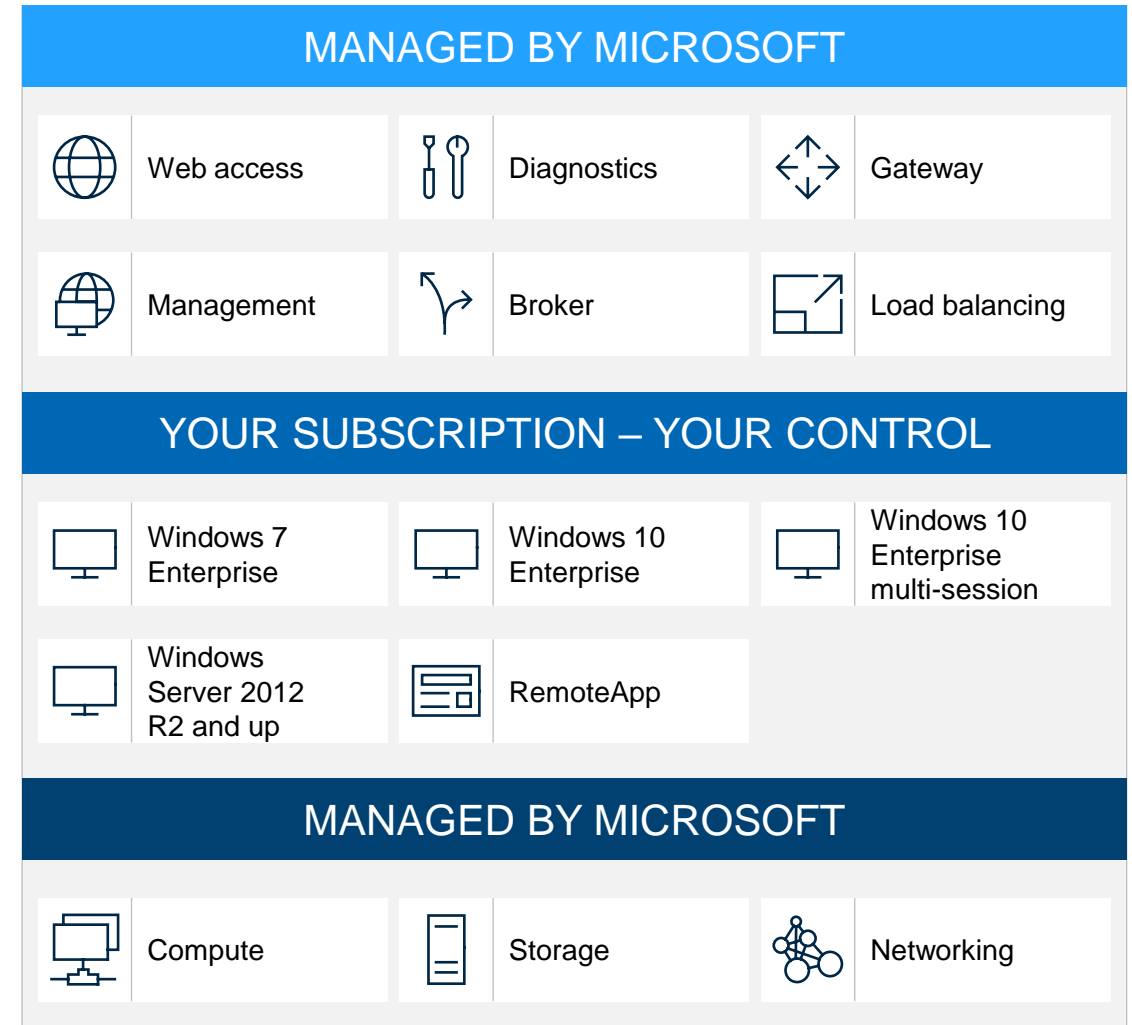
Windows Virtual Desktop

The best virtual desktop experience, delivered on Azure

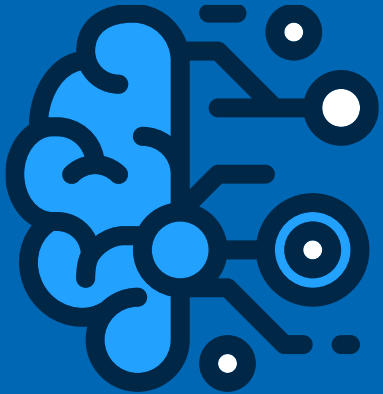
- Deliver the only multi-session Windows 10 experience
- Enable optimizations for Microsoft 365 Apps for Enterprise
- Migrate Windows Server (RDS) desktops and apps
- Deploy and scale in minutes
- Address hybrid requirements and existing solutions

High level architecture

- Provides virtualization infrastructure as a managed service
- Utilizes Azure Active Directory identity management service
- Deploy and manage VMs in Azure subscription
- Manage using existing tools like Configuration Manager
- Simply connect to on-premise resources



Access to Windows Virtual Desktop



What are the eligible Windows and M365 licenses to access WVD?

You are eligible to access Windows 10 and Windows 7 with Windows Virtual Desktop if you have one of the following licenses*

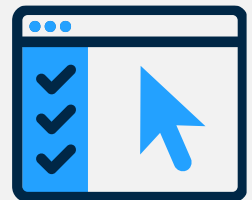
- Microsoft 365 E3/A3
- Microsoft 365 E5/A5
- Microsoft 365 F1
- Microsoft 365 Business Premium
- Windows 10 Enterprise E3/E5
- Windows 10 Education A3/A5
- Windows 10 VDA per user

**Customers can access Windows Virtual Desktop from their non-Windows Pro endpoints if they have a Microsoft 365 E3/E5, Microsoft 365 A3/A5 or Windows 10 VDA per user license.*

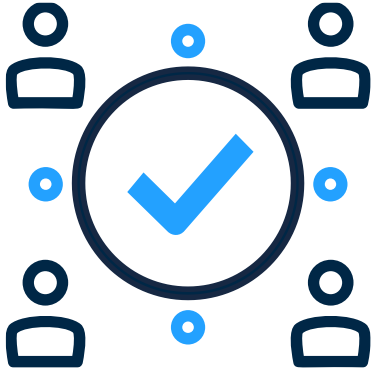
What is the eligibility criteria on Remote Desktop Services (RDS) CAL licenses to access Windows Server desktops and apps on WVD?

You are eligible to access Windows Server 2012 R2 and newer desktops and apps if you have an RDS CAL license with active Software

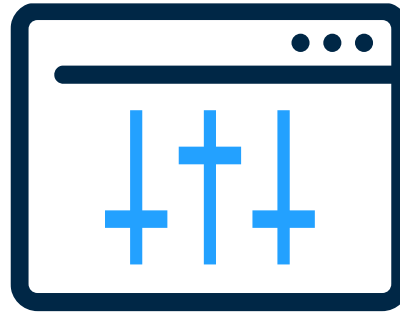
Assurance (SA).



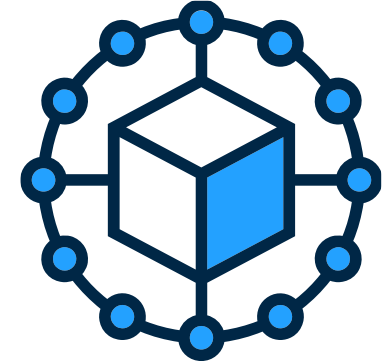
Azure Consumption



Pay only for the virtual machines (VMs), storage, and networking consumed when your users are using the service.



Take advantage of options such as [one-year or three-year Azure Reserved Virtual Machine Instances](#), which can save you up to 72% versus pay-as-you-go pricing. Reserved Virtual Machine Instances are flexible and can easily be exchanged or returned.

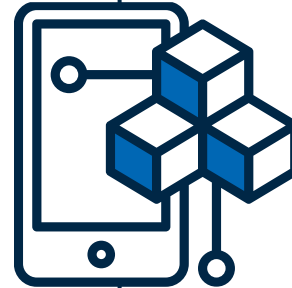


You have the flexibility to pick any VM and storage options to match your use cases.

Call To Action

Codec WVD Offer

Codec are pleased to offer funded proof of concept opportunities for customers wishing to explore the suitability of using Windows Virtual Desktop.



To help on your journey, Microsoft and Codec are offering the following incentive:

- Funding to assist with **Proof of Concept** (minimum of 25 virtual Desktops)
- A Comprehensive **implementation plan** with next steps and project costs
- Access to Codec's award-winning Microsoft Azure Expert MSP Team for **Design and Deployment services**

WVD Codec Project Process

