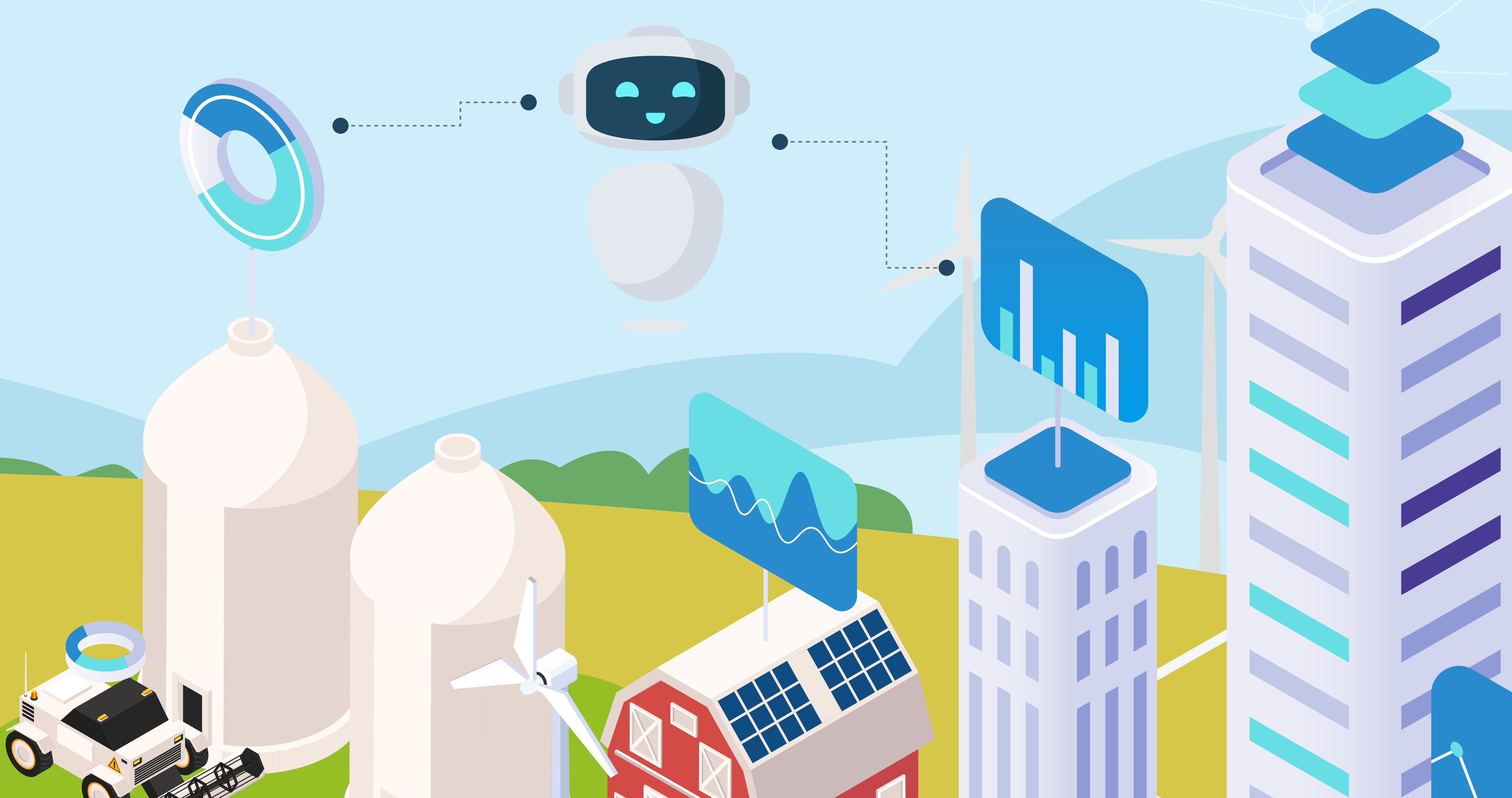




# (r)urban Platform

More info

[www.dunavnet.eu](http://www.dunavnet.eu)



# ➔ Empowering Smart Communities with Advanced Digital Solutions

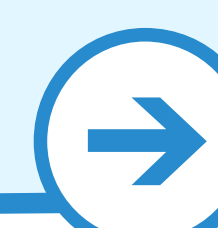
The **(r)urban platform** represents a cutting-edge suite of digital tools meticulously engineered to elevate the quality of life in both urban and rural communities.

Designed to cater to the diverse needs of citizens, local authorities, and businesses, it provides essential capabilities for efficient resource management, informed decision-making, and the cultivation of sustainable, interconnected environments.

By fostering local economic growth and driving community engagement, the platform ensures that all stakeholders benefit from a more efficient, environmentally responsible, and socially inclusive way of life.

## Solutions Tailored to Your Needs

- **Diverse Options:** Our platform offers a range of functionalities, each tailored to different community sizes and needs. This ensures that whether you're in a small town or a large city, you receive the most appropriate tools.
- **Scalable Design:** Whether you're managing a rural area or a bustling urban center, our platform can be scaled up or down to match your community's specific demands and growth.
- **Adaptable Features:** Designed with flexibility in mind, our platform can be easily customized to address unique local challenges and priorities.
- **Seamless Implementation:** The platform integrates smoothly with existing infrastructure and systems, allowing for straightforward deployment and immediate benefits from advanced digital capabilities without major overhauls.



# ➔ Environmental Monitoring

## Noise Monitoring:

An advanced solution for tracking noise levels across urban areas, supporting the creation of accurate noise maps and informing urban planning efforts.



### ○ Main Features:

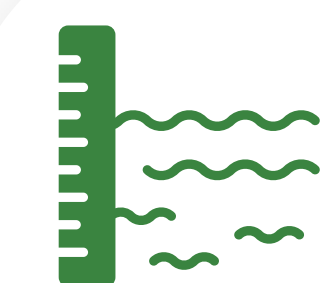
Delivers precise data on noise pollution, enabling effective noise control and supporting more sustainable urban development.

### ○ Key Benefits:

Reduces noise pollution, improves the quality of life in residential areas, and supports the creation of healthier and more livable urban environments.

## Flood Monitoring and Prevention:

A real-time flood monitoring and early warning system designed to protect communities from the devastating impacts of natural disasters.



### ○ Main Features:

Integrates advanced hydrological models, real-time weather data, and sensor networks to provide timely alerts and enable proactive disaster management.

### ○ Key Benefits:

Enhances community resilience by minimizing the impact of floods and other water-related disasters through early warning and rapid response mechanisms.

## Air, soil and water quality monitoring:

Provides accurate, real-time data on environmental conditions, enabling informed decision-making and proactive environmental management.

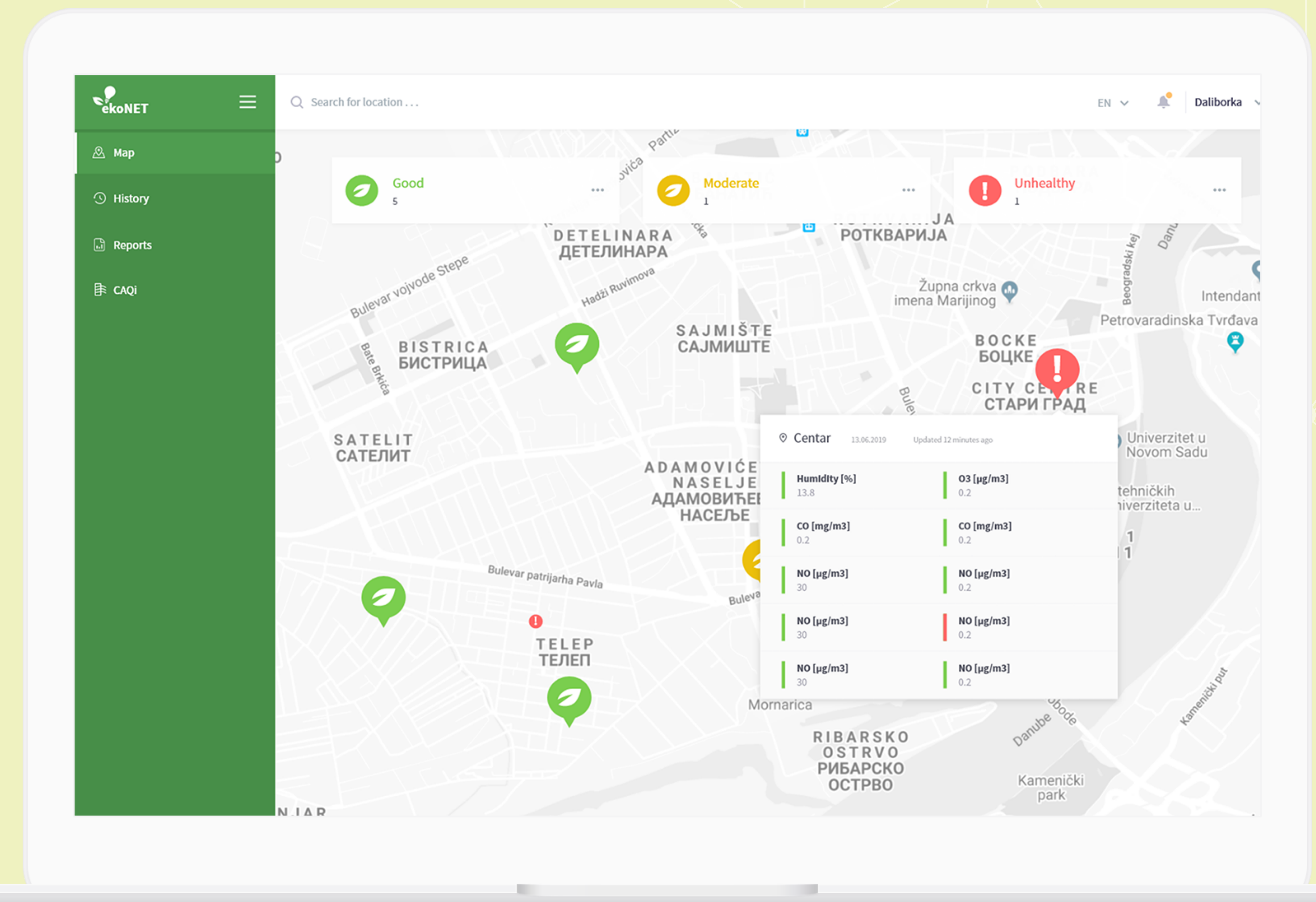


### ○ Main Features:

Provides accurate, real-time data on environmental conditions, enabling informed decision-making and proactive environmental management.

### ○ Key Benefits:

Safeguards public health, protects natural resources, and ensures compliance with environmental regulations by enabling timely and effective responses to environmental challenges.



## ➤ City Co-Pilot

**City Co-Pilot is an AI-powered chatbot** designed to enhance citizen engagement by providing instant access to essential information about city services and ongoing programs. This intelligent virtual assistant allows residents to quickly find details on events, permits, and local resources, effectively bridging the gap between the community and local government.

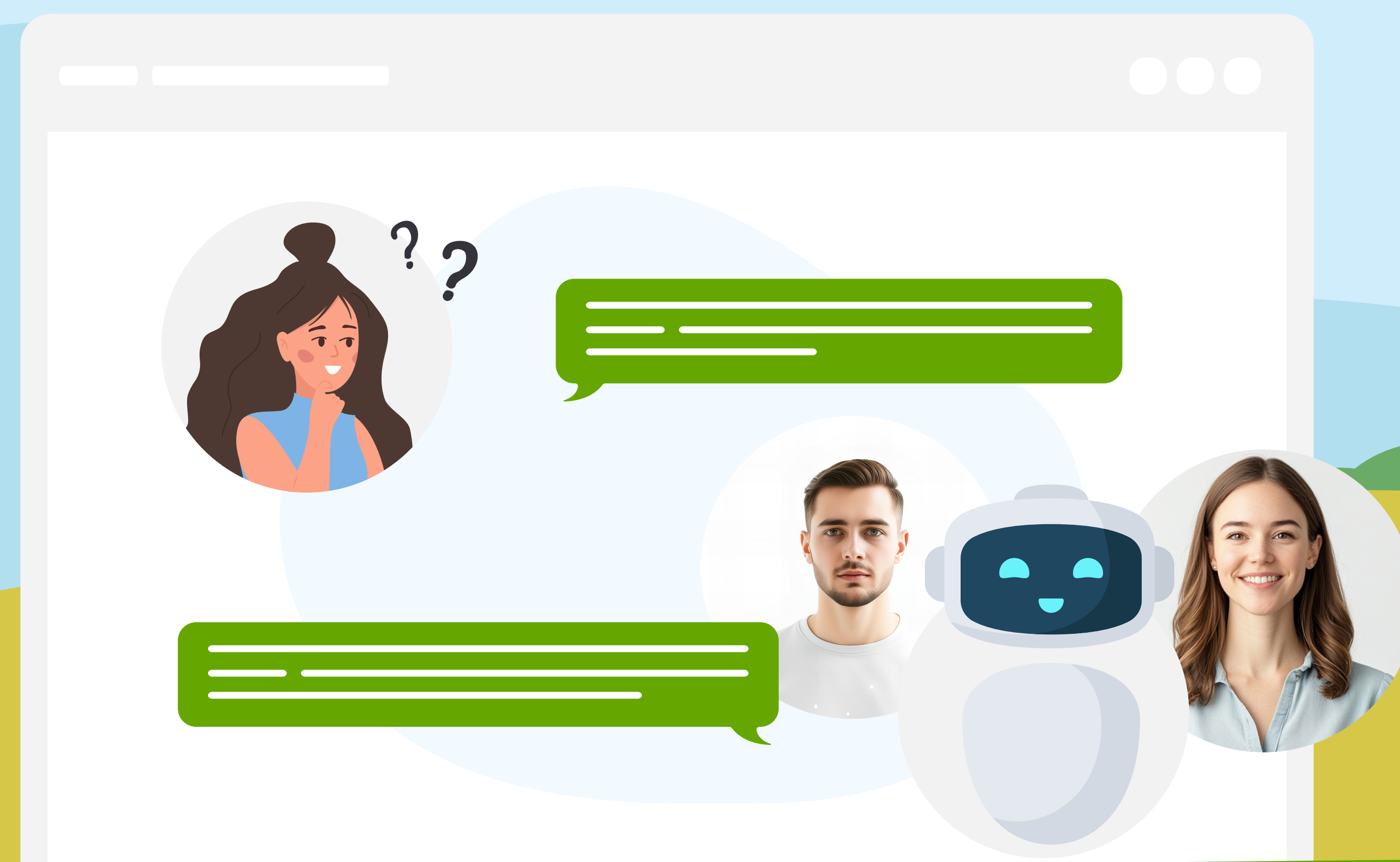


### ○ Main Features:

City Co-Pilot provides 24/7 support, answering citizen queries and offering personalized recommendations. A unique feature of this bot is its ability to change its visual appearance, displaying different human characters depending on the topic of conversation.

### ○ Key Benefits:

This integration enables seamless access to city services, streamlining operations and improving decision-making. Additionally, it enhances support by providing round-the-clock assistance, ensuring citizens have the information they need at any time.



## ➤ MarketOnClick

**MarketOnClick is a comprehensive online marketplace** designed to connect consumers with local agricultural producers. This innovative platform allows users to buy and sell fresh, high-quality food directly from trusted sources, enhancing the visibility of local producers while providing consumers with easy access to locally sourced products.



### ○ Main Features:

Users can explore a diverse range of fresh produce, conveniently track their orders, and engage directly with producers. The platform also provides easy access to product information, enabling consumers to make informed choices about their purchases.

### ○ Key Benefits:

MarketOnClick ensures a dynamic and efficient marketplace experience by empowering local producers and offering consumers direct access to fresh, high-quality food. This integration enhances community support for local agriculture, promotes sustainable practices, and fosters stronger relationships between consumers and producers.



# ➤ Urban Infrastructure Management

## City Asset Management:

A solution for the comprehensive management and maintenance of city infrastructure, enabling real-time interaction with devices and sensors dispersed throughout the urban landscape.



### ○ Main Features:

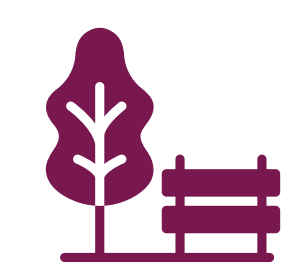
Integrates IoT sensors, geospatial data, and advanced analytics to deliver a holistic view of asset conditions, status, and performance.

### ○ Key Benefits:

Facilitates predictive and proactive maintenance strategies, optimizes resource allocation, and supports data-driven decision-making processes, thereby enhancing service delivery and prolonging the operational life of critical infrastructure assets.

## Management of Green Areas:

Advanced tools designed for the effective management of parks, gardens, and other green spaces through the analysis of soil conditions such as moisture, temperature, and salinity.



### ○ Main Features:

Supports data-driven maintenance of green areas, ensuring their vitality and contributing to urban biodiversity.

### ○ Key Benefits:

Enhances the sustainability of urban green spaces, promotes biodiversity, and improves the overall aesthetic and ecological quality of public areas.

## Waste Management:

An IoT-enabled solution for monitoring waste container fill levels, optimizing collection routes, and reducing environmental impact.

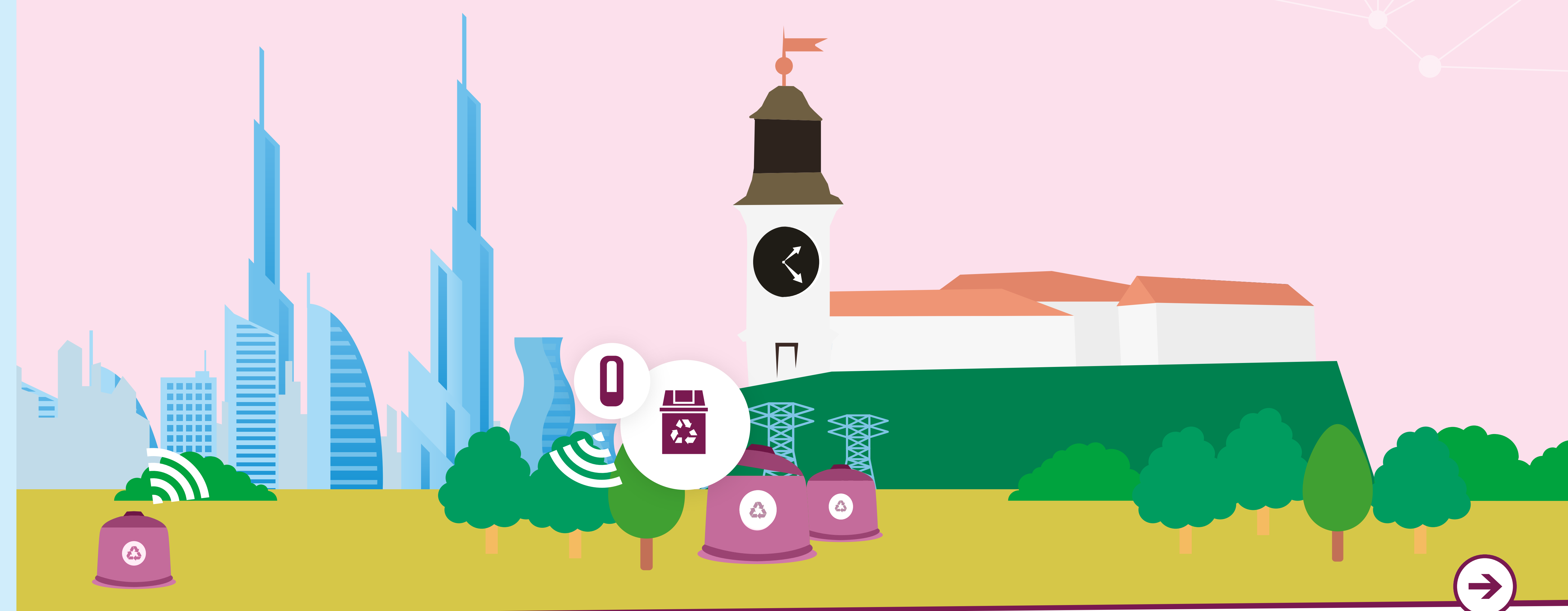


### ○ Main Features:

Utilizes sensors and data analytics to streamline waste collection processes, improve operational efficiency, and reduce environmental impact.

### ○ Key Benefits:

Lowers operational costs, enhances the efficiency of waste management operations, and supports the transition to a more sustainable and environmentally friendly waste management system.



## ➔ Display Management (DM):

**Display Management (DM)** is a platform designed for efficient screen management, ensuring seamless content delivery across multiple displays. Whether managing a small network or a large-scale deployment, DM offers flexible and scalable solutions to suit various needs.



### ○ Main Features:

With DM, users can group multiple displays and remotely control content, including the ability to verify content displayed. The system provides real-time status updates for displays, indicating whether they are online or offline.

### ○ Key Benefits:

This solution enhances operational efficiency by allowing the creation of dynamic playlists and campaigns with defined start and end times. The intuitive layout designer and scheduling features ensure precise content delivery, while reporting capabilities offer insights into display performance and content effectiveness.

## ➔ Facility Management

**Facility Management System (FMS)** is a platform that streamlines object maintenance operations across multiple locations. By leveraging real-time data and performance analytics, it ensures efficient workflows, helps prevent issues before they arise, and optimizes overall maintenance tasks.

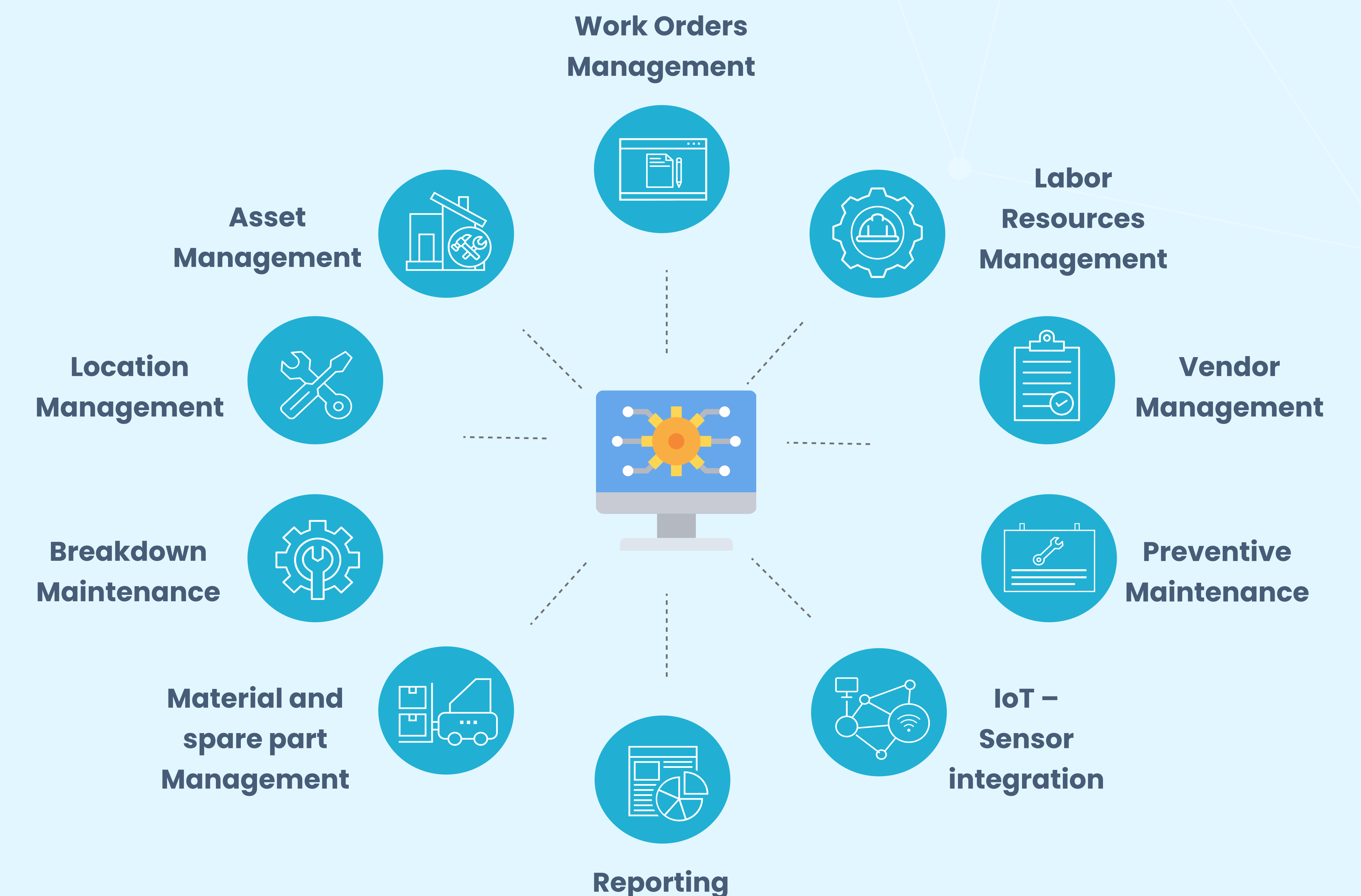


### ○ Main Features:

Facility management offers real-time performance tracking and detailed record-keeping to manage maintenance activities. It enables proactive problem detection, supports role-based user management for enhanced security and access control, and offers customizable reports that deliver valuable insights into operational performance.

### ○ Key Benefits:

By improving the tracking and management of maintenance tasks, FMS reduces downtime and operational costs. Its proactive approach ensures smooth workflows, prevents issues before they escalate, and enhances overall efficiency and productivity for businesses of all sizes.



# ➔ Traffic Management

## Real-time Traffic Analysis:

An advanced system that leverages AI and video surveillance to provide detailed insights into traffic flow at key urban locations.

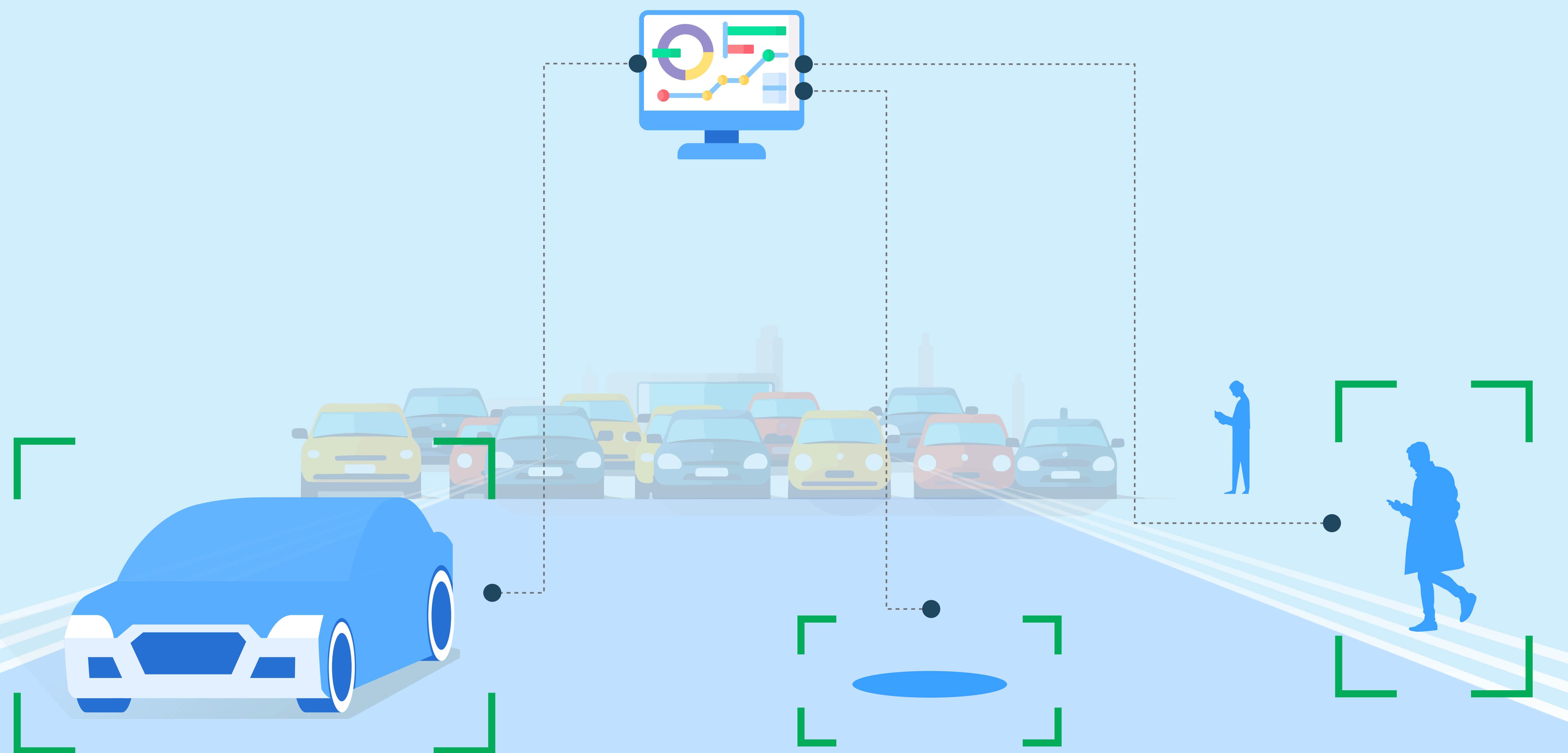


### ○ Main Features:

Recognizes and counts pedestrians, cyclists, and types of vehicles passing a junction or another selected location. Tracks traffic flow, signal compliance, and violations with a real-time dashboard.

### ○ Key Benefits:

Optimizes traffic management, supports infrastructure planning, and enhances road safety with actionable data.



## Parking Space Monitoring:

An intelligent solution for the real-time monitoring of available parking spaces, aimed at reducing urban congestion and improving parking efficiency.

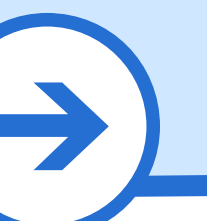
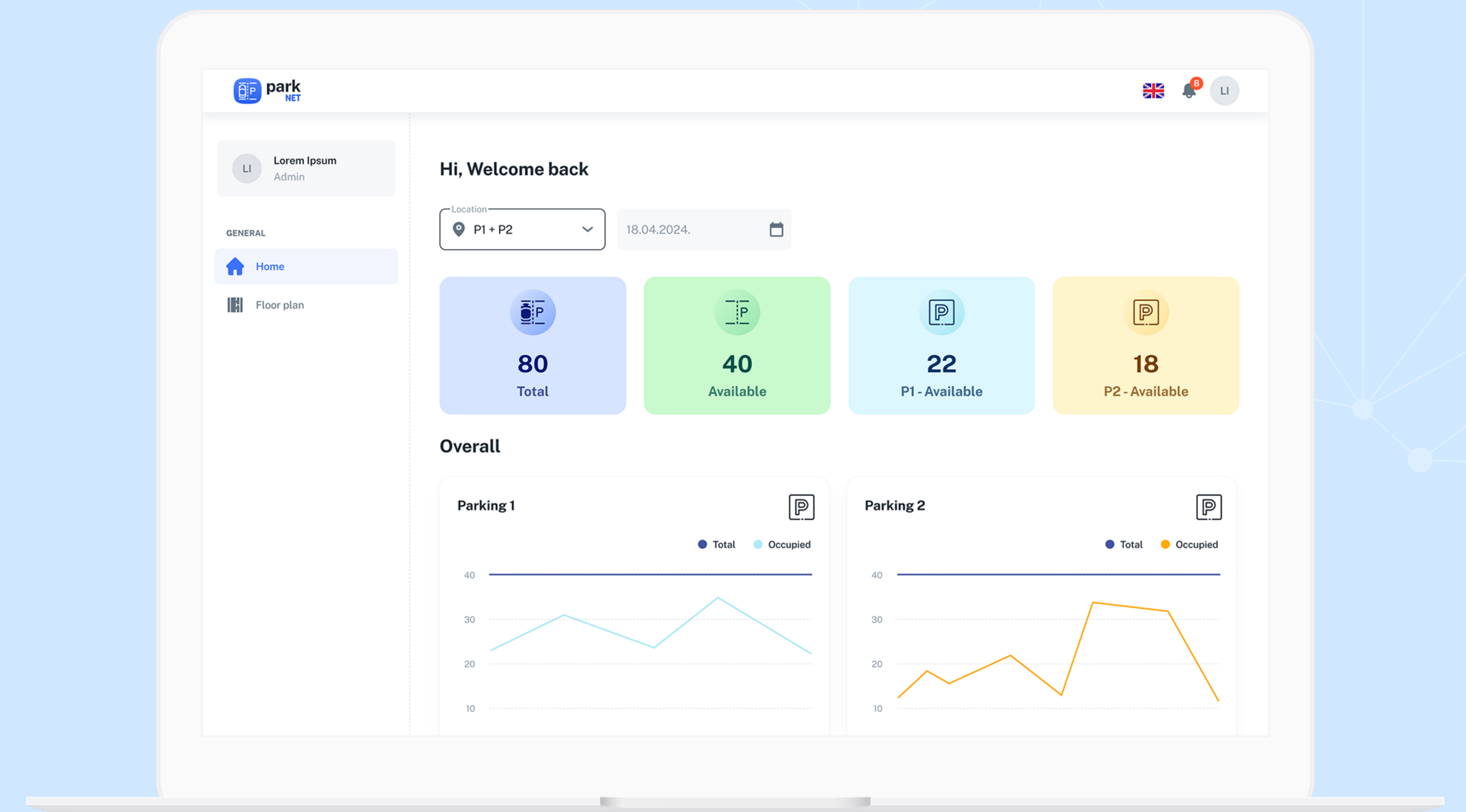


### ○ Main Features:

Employs cameras and sensors to provide real-time data on parking availability, guiding drivers to the nearest available spaces.

### ○ Key Benefits:

Decreases traffic congestion, enhances the parking experience for drivers, and contributes to a more efficient and sustainable urban transportation ecosystem.



# ➔ Community Engagement Tools

## Local Enterprise Portal:

An online catalogue to promote and engage with local entrepreneurs, fostering business opportunities, facilitating promotion of and giving boost to the local economy.

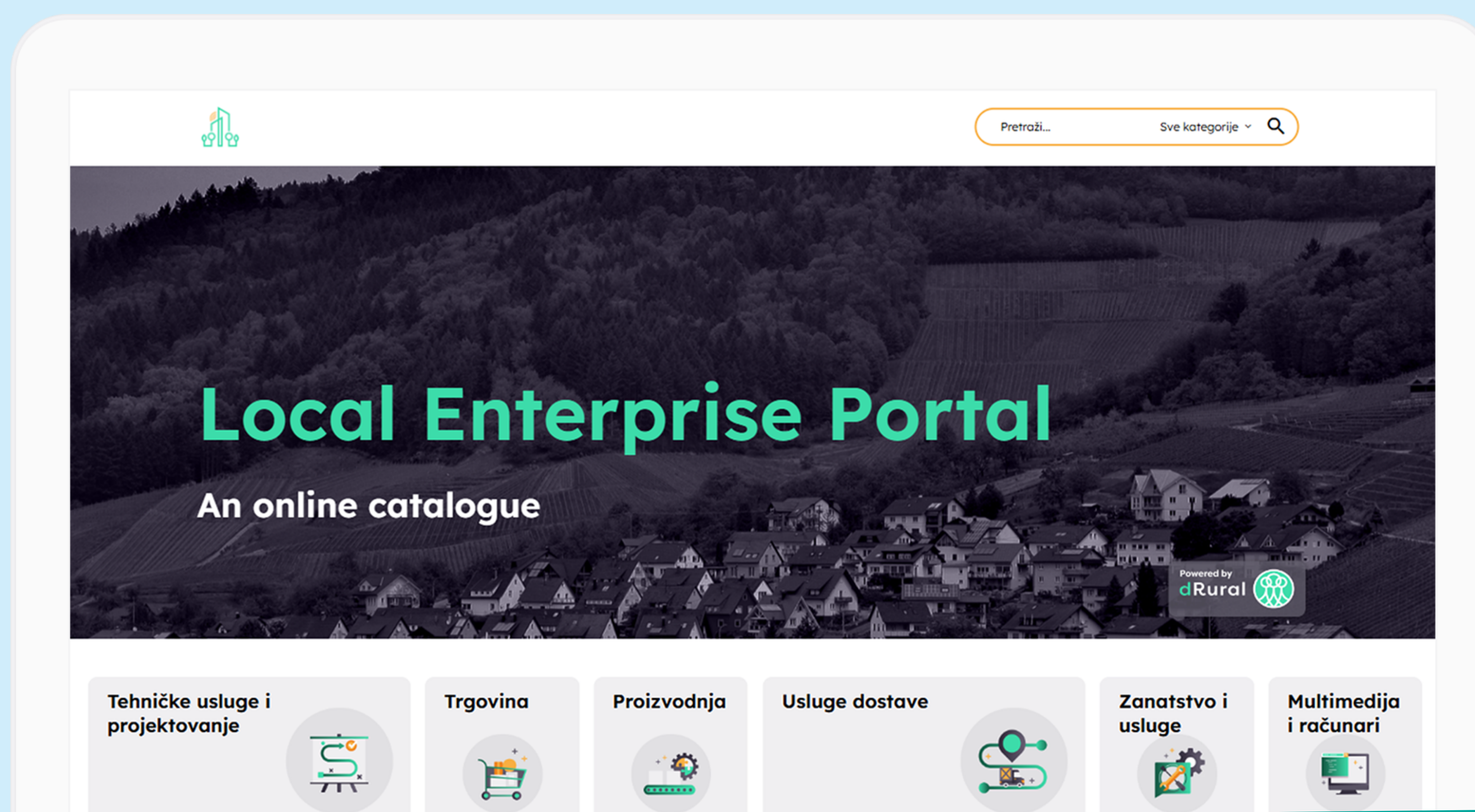


### ○ Main Features:

Functions as a dynamic digital marketplace, linking businesses with potential customers and facilitating economic transactions within the community.

### ○ Key Benefits:

Supports the growth of local businesses, stimulates regional economic development, and strengthens community resilience by providing a platform for small and medium-sized enterprises (SMEs) to thrive and expand their reach.



## Community Networking Hub:



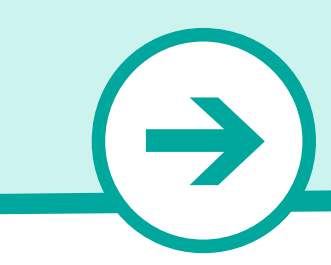
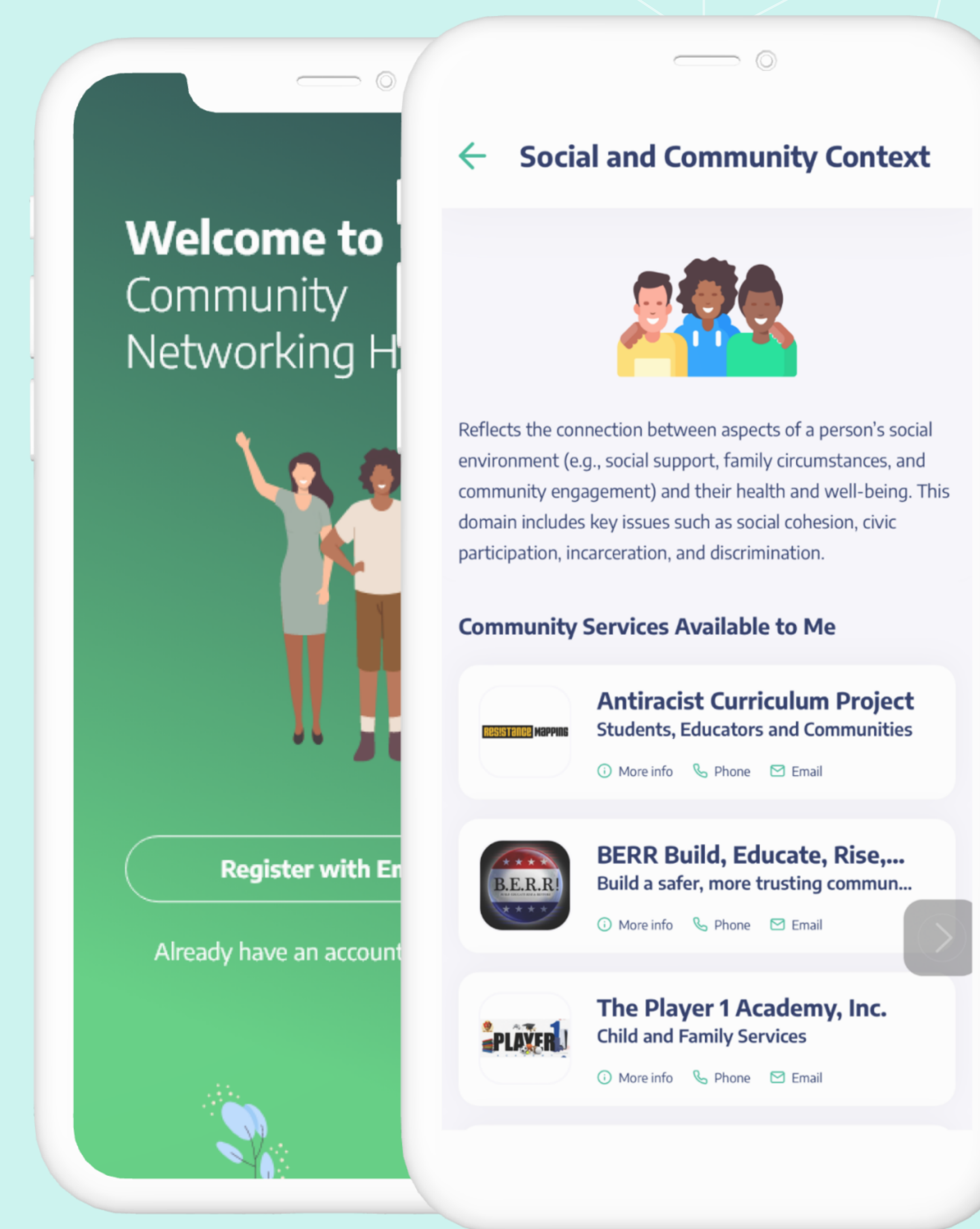
**Dynamic Community Information Platform** enables local administrators to create, edit, and distribute community-relevant content in various formats. This platform serves as a central hub for sharing essential information with citizens.

### ○ Main Features:

It supports text, images, videos, and interactive elements for engaging and informative presentations. This versatility allows for a rich user experience, ensuring information is both accessible and appealing.

### ○ Key Benefits:

The platform enhances communication and engagement, providing citizens with timely updates on events and services in their community. By fostering a well-informed public, it strengthens community ties and promotes active participation.



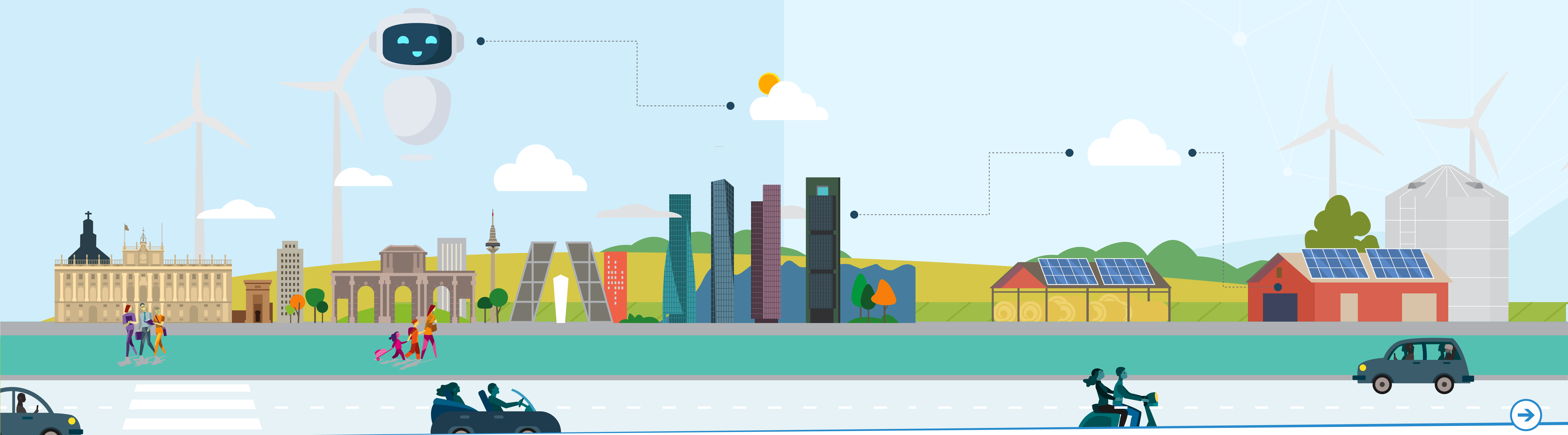


# ➔ Benefits of the (r)urban Platform

## Join Our Community

Become an integral part of the **(r)urban** revolution. Whether you are a city planner, entrepreneur, or resident, our platform offers the advanced tools and capabilities necessary to transform your community into a smarter, greener, and more connected environment.

- **Community Engagement:** Enhances participation and collaboration among citizens, businesses, and local authorities, fostering a sense of shared responsibility and collective ownership.
- **Sustainability:** Supports eco-friendly practices through smart resource management, reducing environmental impact and promoting long-term ecological balance.
- **Efficiency:** Streamlines city management processes, reducing manual workload, improving service delivery, and optimizing the use of resources across various municipal functions.
- **Economic Growth:** Encourages local economic development by supporting businesses and entrepreneurs, creating a more resilient and diverse local economy.
- **Safety and Security:** Improves community safety through real-time monitoring, quick emergency response, and proactive disaster management, enhancing overall public safety and security.





# (r)urban Platform

## Get in Touch

**Ready to elevate your community with the (r)urban platform?**  
Our dedicated team is here to support local governments, businesses,  
and organizations at every stage of implementation.

Visit us:  
**[www.dunavnet.eu](http://www.dunavnet.eu)**

Contact us:  
**[info@dunavnet.eu](mailto:info@dunavnet.eu)**

