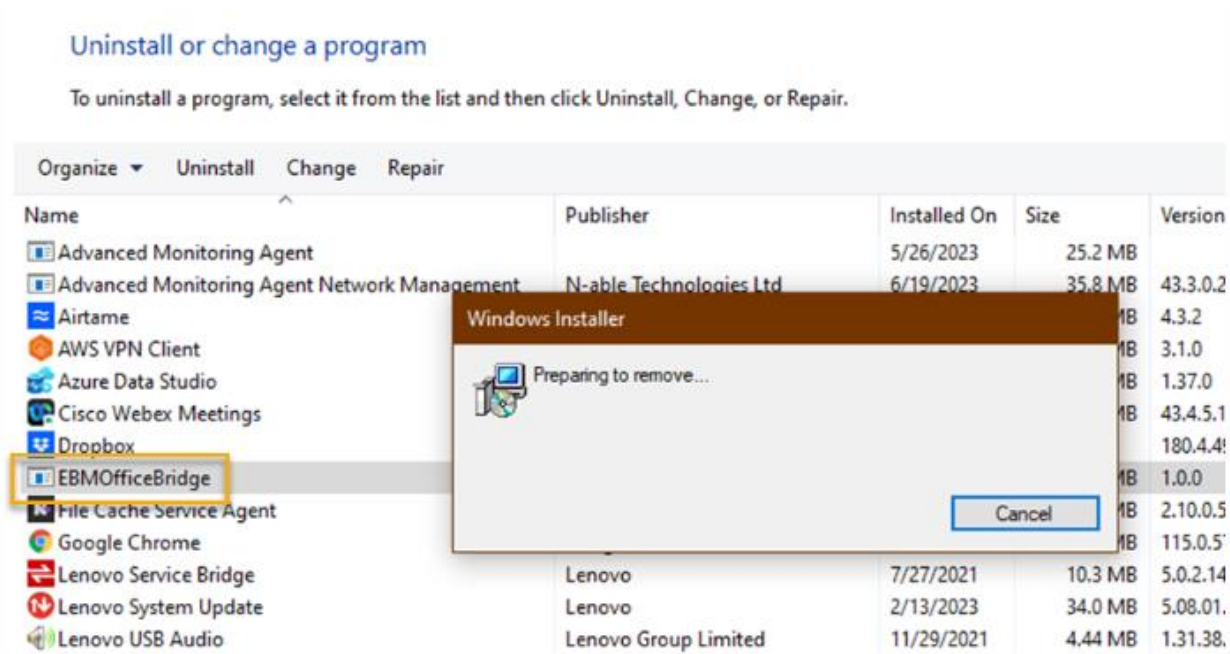


How to Install the EBM Excel Add-In

Follow the easy steps below to install the EBM Excel COM Add-in .msi package onto your local machine.

1. **Installation Requirements:** Before starting the installation, please review the necessary [requirements at the bottom of this article](#) to ensure a smooth process.
2. **Before proceeding,** ensure you don't already have the EBM Add-In installed. If you do, [uninstall it using the following steps](#):
 - Close ALL Excel files.
 - Navigate to Control Panel > Add/Remove Programs.
 - Find "EBMOfficeBridge" in the list and select "Uninstall." Follow the prompts and restart your computer.

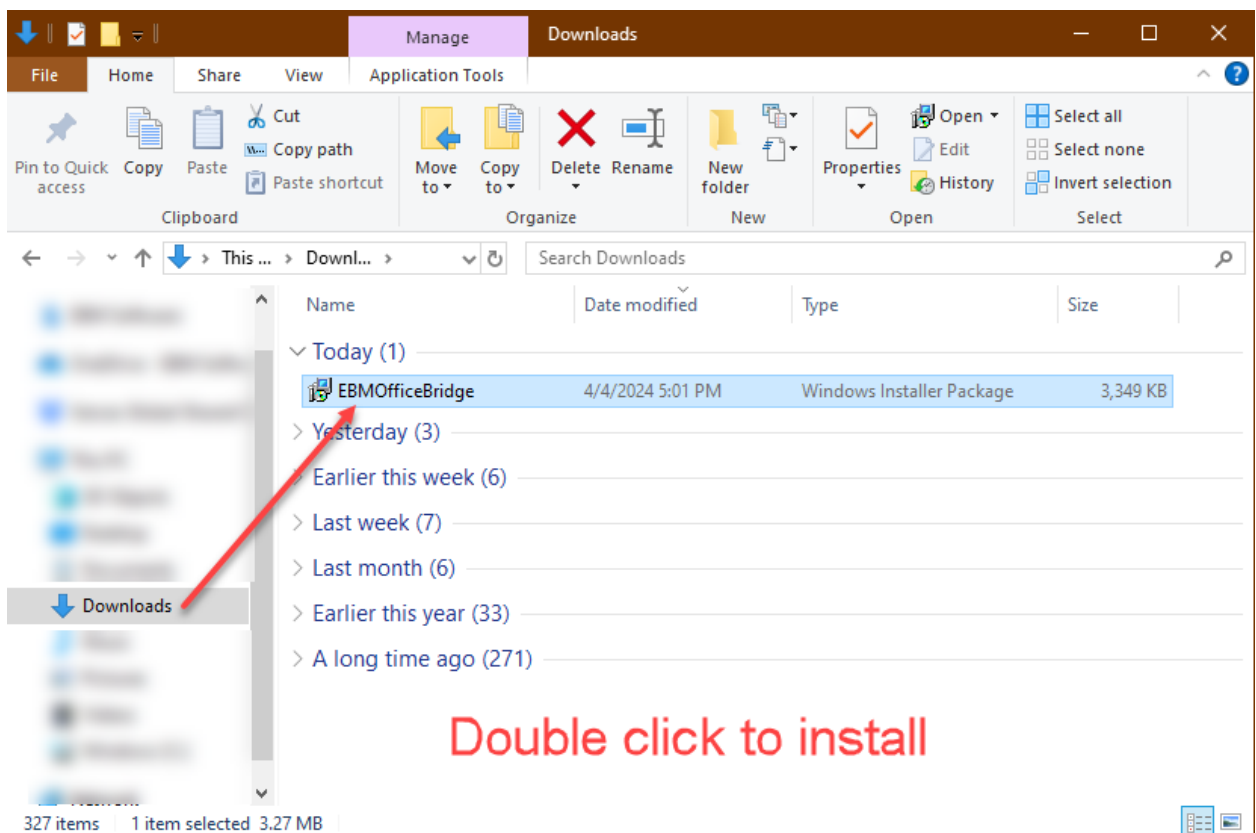


3. To **install** the latest version, visit our [download landing page](#) and provide your details.
4. **Before starting** the installation, close Excel.
5. **Click on** the '[Download Now](#)' button to obtain the new Excel Add-In. If you can't see the Download Now button, ensure you have disabled Ad Blockers on your web browser.

First Name * Last Name * E-mail Address *

[Download Now](#)

6. **Run the MSI file** and follow the on-screen prompts. If prompted by Excel to close, allow it to do so temporarily.



7. **Once installed**, the EBM Add-In will integrate into Excel and appear in the "Office Add-Ins" list. Here's how to verify installation and activation:

- Go to Excel > File > Options > Add-ins > COM add-ins.
- Ensure "EBM Office Bridge" is listed and enabled. If not, check the Disabled List and enable it if necessary.

Excel Options

General
Formulas
Data
Proofing
Save
Language
Accessibility
Advanced
Customize Ribbon
Quick Access Toolbar
Add-ins
Trust Center

View and manage Microsoft Office Add-ins.

Add-ins

Name ^	Location	Type
Active Application Add-ins		
EBMOfficeBridge		COM Add-in
Inactive Application Add-ins		
Analysis ToolPak	C:\Program Files\Microsoft Office\root	Excel Add-in
Analysis ToolPak - VBA	C:\Program Files\Microsoft Office\root	Excel Add-in
Date (XML)	C:\Program Files\Common Files\Micro	Action
Euro Currency Tools	C:\Program Files\Microsoft Office\root	Excel Add-in
Inquire	C:\Program Files (x86)\Microsoft Offic	COM Add-in
Microsoft Data Streamer for Excel	C:\Program Files\Microsoft Office\root	COM Add-in
Microsoft Power Map for Excel	C:\Program Files\Microsoft Office\root	COM Add-in
Microsoft Power Pivot for Excel	C:\Program Files\Microsoft Office\root	COM Add-in
Solver Add-in	C:\Program Files\Microsoft Office\root	Excel Add-in

Add-in: EBMOfficeBridge
Publisher: <None>
Compatibility: No compatibility information available
Location: C:\Users\... AppData\Local\EBM Software\EBMOfficeBridge\adxloader64.dll
Description: AddinModule

Manage: Disabled Items Go...

OK Cancel

This is the add-in and confirms it's been installed.

If you don't see it, make sure it's not disabled.

8. **Share** this information with your team to ensure they download and install the EBM Add-In.
9. **Coordinate** with your [EBM Team](#) to **update legacy files**, or by using the [Cube Migrator tool](#) after installation.

Installation Requirements

To install the EBM Excel Add-In successfully, the following conditions must be met:

- **Windows Environment Required:** The EBM Excel Add-in must be installed on a PC running a Windows operating system. Mac is unsupported unless running a virtual Windows environment.

- **Administrative Access:** Local administrative access is required to install an .msi package or COM add-in for Excel. If you lack administrative rights, you must work with your IT team to complete the installation.
- **Firewall and Antivirus Settings:** If your firewall, antivirus, or anti-malware software is managed locally or globally, you may need to create an exception to allow the application to install. These exceptions might only be necessary during installation, but if external connections through Excel are blocked, an additional exception will be required to connect to the EBM datalake.
- **User Permissions:** Besides administrative access, verify that users have the necessary permissions to run add-ins in Excel. Some organizations may have restrictions that need adjusting.
- **Internet Connectivity:** Ensure a stable internet connection during installation. If your organization uses a proxy server, make sure it is configured correctly to allow the add-in to connect to the internet.
- **Previous Versions:** Uninstall any previous versions of the EBM Excel Add-In before installing the latest version to avoid conflicts or compatibility issues.
- **Software Updates:** Ensure that Windows and Excel are up-to-date with the latest patches and updates. Outdated software can lead to compatibility and security issues.
- **Support:** EBM or an associated member will assist you through the installation process and coordinate with your IT team as necessary. However, if the installation party fails to follow the specified requirements or instructions provided during the implementation phase, support for installation may incur additional time and materials costs.

Ensuring these requirements are met will help prevent any installation issues.

With the EBM Excel Add-In successfully installed, you've taken a significant step towards optimizing your Excel operations. By leveraging its capabilities, you can unlock new levels of productivity and efficiency while ensuring compatibility with evolving technological landscapes. Don't forget to share this valuable resource with your team and coordinate with Blue Ops or EBM to ensure a seamless transition for legacy files.