

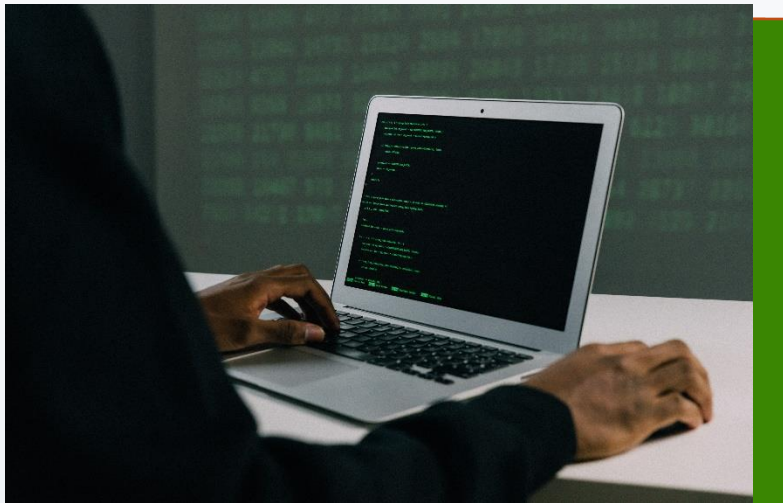


- Silver Application Integration
- Gold Messaging
- Silver Application Development
- Gold Communications
- Gold Project and Portfolio Management
- Gold Collaboration and Content
- Gold Cloud Platform
- Gold Datacenter
- Gold Cloud Productivity
- Gold Small and Midmarket Cloud Solutions
- Silver Enterprise Mobility Management
- Gold Windows and Devices
- Silver Security

BOLSTERING HYBRID CLOUD SECURITY

ABOUT ECF DATA,LLC:

Since its founding in 2010, ECF Data carries out a methodical and strategic approach and offers a full range of services including consultation and planning, managed services, project management, installation, and deployment.



WHAT WE OFFER

As the use of cloud services continues to grow, cyber risks and threats continue to evolve. Get help achieving your hybrid and multi-cloud security objectives—and identify current and real threats—by scheduling a **Secure Multi-Cloud Environments Workshop**.

Through this engagement, ECF Data will work with you to identify current security threats and vulnerabilities in your hybrid and multi-cloud environment and to better understand how to advance your security journey using the latest tools. The highlight of the workshop include:

- Discover threats and vulnerabilities in your hybrid environment
- Learn how to prioritize and mitigate potential threats to your servers and services.
- Understand what can be done to reduce the attack surface area for hybrid workloads.
- Learn about the benefits and capabilities of Microsoft Defender for Cloud and Azure Network Security.
- Develop defined next steps based on your needs and objectives.

See what customers are saying:

"Weighing in the benefits of the cloud, it's simply not an option for Curaleaf to shift to our old ways. The Secure Multi-Cloud Environments Workshop covered our apprehensions in security and empowered our people to assess our current environment."

~Tony Gage , Vice President of IT, Curaleaf

Why Microsoft 365?

Save your company money

Microsoft 365 is available as a simple monthly subscription. Avoid large up-front costs for new software while moving the cost of IT from capital to operating expense. And without on-premises servers to run email, websites, and document storage, you can reduce energy costs and save by no longer purchasing new server hardware.

Scale your business quickly and flexibly

Microsoft 365 grows with you on the Microsoft Azure cloud. Adding a new user is as simple as buying an additional license, which allows access to business-critical technology on up to five PCs/Macs and five mobile devices. Microsoft 365 provides many plans to fit the right capability needs and price points for each user in your organization.

Technical support

Your Microsoft 365 subscription comes with 24/7 support from a global network of experts, with one-hour response for critical, service-impacting events.

Financially backed SLA

Get peace of mind knowing your services are available when you need them with a financially backed, 99.9% uptime service-level agreement.

Simplified IT management

Reduce headaches by reducing your IT infrastructure. Content lives safely in globally distributed data centers with continuous backup and disaster recovery abilities.



Microsoft 365 is a cloud-based subscription service that brings together the best tools for the way people work today. By combining best-in-class apps like Excel and Outlook with powerful cloud services like OneDrive and Microsoft Teams, Microsoft 365 lets anyone create and share anywhere on any device.

WWW.MICROSOFT365.COM

Key use cases

Business-class email

Build anything from lightweight websites to multi-tier cloud services that scale up as your traffic grows.

Cloud storage

Rely on geo-redundant cloud storage for backup, archiving, and disaster recovery.

Meet online

Get actionable insights from your data by taking advantage of a fully compatible, enterprise-ready Hadoop service.

Collaborate, chat privately

Accelerate your mobile app development by using a backend hosted on Microsoft Azure.