



Value proposition of using
People@Work plug-in with
Microsoft Excel and PowerBI

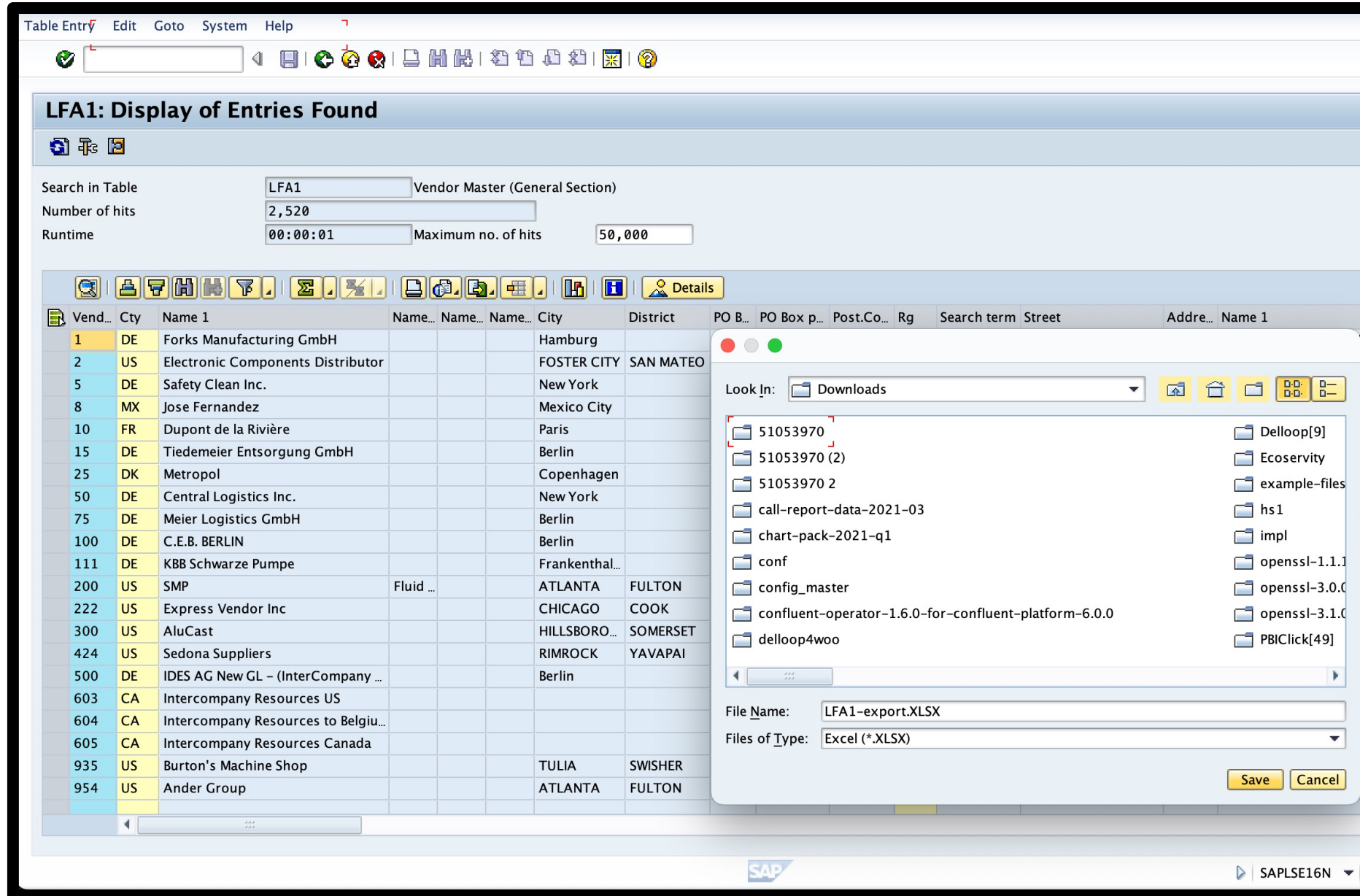
Context

- Ecoservity was requested by an Asia based company to provide time & cost impact by using People@Work connector
 - Microsoft PowerBI
 - MS Excel
 - Other mechanisms (like CDATA / manual)
- The company manufactures specialty apparels
- Currently, they use manual downloads from SAP ERP (using SE16N for tables / reports download into MS Excel)

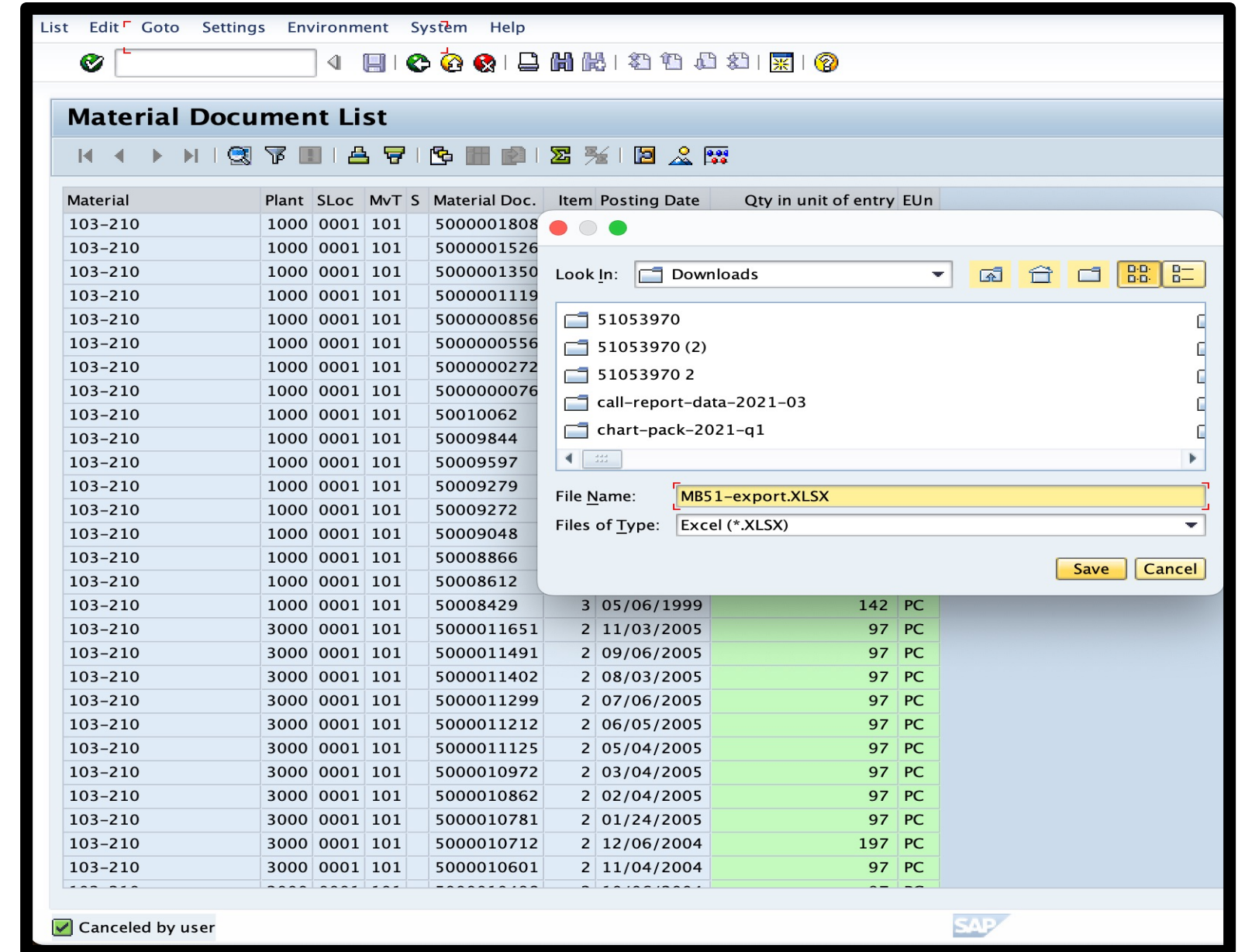
Approach

- Comparison was done for the following 5 objects:
 - SAP TCODE MB51, with report variant
 - SAP Report RM06EL00
 - SAP table LFA1 / T001W
 - SAP view V_TNAPR
- Tools used were
 - SAP SE16N (manual tables) / SE38 for manual reports / TCODES
 - MS Excel with People@Work add-in
 - MS PowerBI with People@Work add-in
 - Public website information from: www.CDATA.com
- Since CDATA extracts underlying tables only, rest of the report development was estimated
- People@Work is a no-code REST API plug-in [Certified by SAP & Microsoft (appendix -1)]

SAP based tools



SE16N for tables download to MS Excel



MB51 for TCODE/ reports download to MS Excel

People@Work based no-code add-in to MS Excel

The screenshot shows the MS Excel interface with the 'Data' ribbon active. The 'Queries & Connections' task pane is open, showing a list of 20 queries. The main spreadsheet displays a table of SAP parameters with the following data:

Parameter name	Parameter value	Parameter value 2	Parameter value 3	Parameter value 4	Parameter value 5
Object type	X	R	T	T	T
Object name	MB51	RM06EL00	T001W	LFA1	V_TNAPR
Variant	USB4SAP1	USB4SAP1	NULL	NULL	NULL
Report type	ALV	ALV	NULL	NULL	NULL
Report labels	B	B	NULL	NULL	NULL
Delimiter					
Format	xlsx				
SAP server name	sap-ecc-ehp8.ecoservity.com				

The 'Queries & Connections' pane on the right shows a list of queries with the following details:

- p_format: Connection only.
- p_webgui_path: Connection only.
- SAP-Data-2: 306 rows loaded.
- SAP-Data-3: 154 rows loaded.
- SAP-Data-4: 1,528 rows loaded.
- SAP-Data-5: 643 rows loaded.
- Other Queries

MS Excel based add-in for TCODES, reports, tables & views from SAP

People@Work based no-code add-in to MS PowerBI

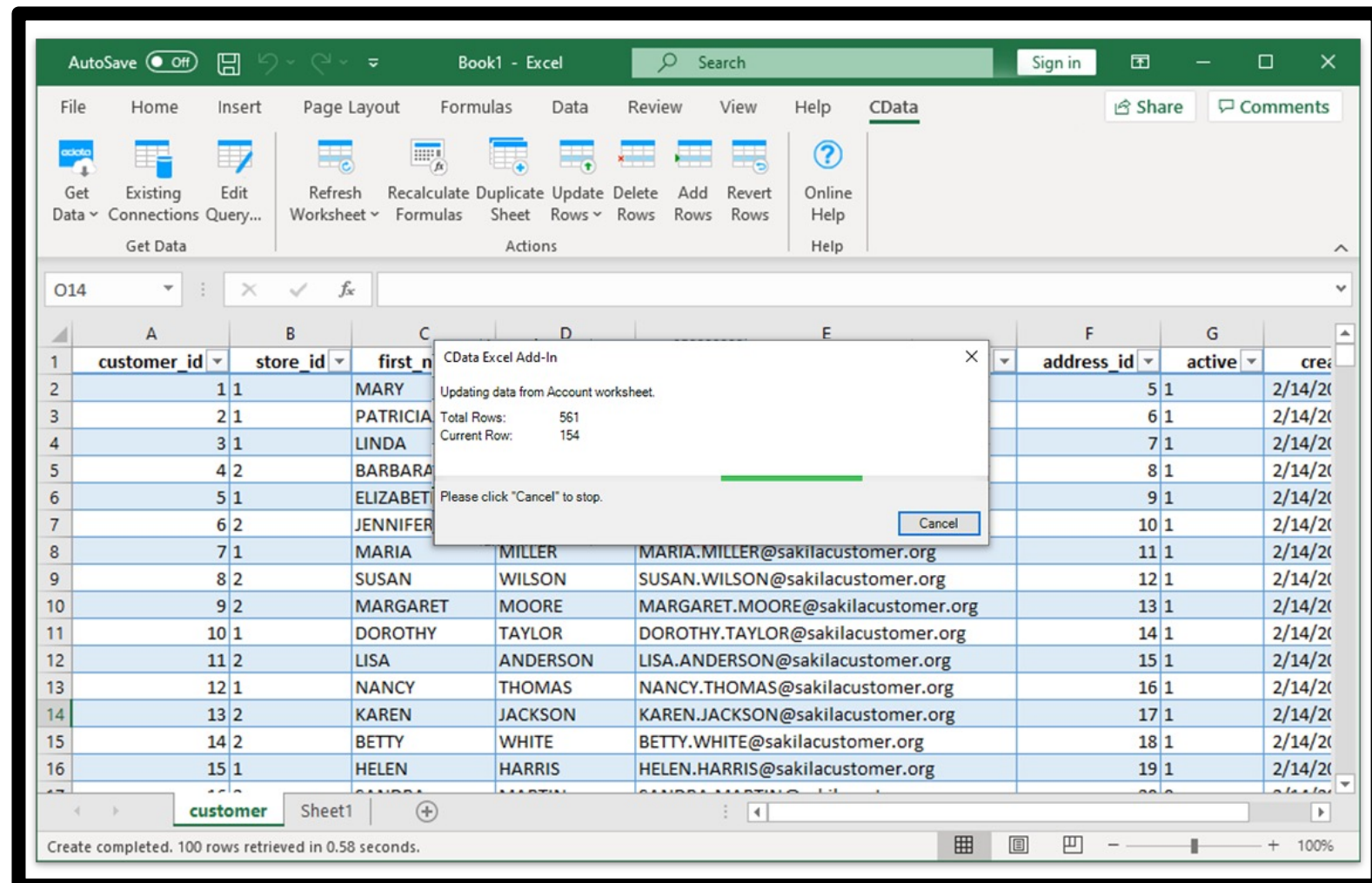
The screenshot displays the MS PowerBI interface with a table of SAP data and an 'Edit Parameters' dialog box. The table has columns for Vendor, Material, Base Unit of Measure, WBS Element, Special Stock, Currency, Plant, Material Description, Name 1, and Special Stock. The 'Edit Parameters' dialog box contains the following fields:

- SAP server name: sap-ecc-ehp8.ecoservity.com
- Port number: 8000
- SAP Object Type: R
- SAP Object Name: RM07MLBS
- SAP Report Variant: USB4SAP1
- SAP Field Label: B

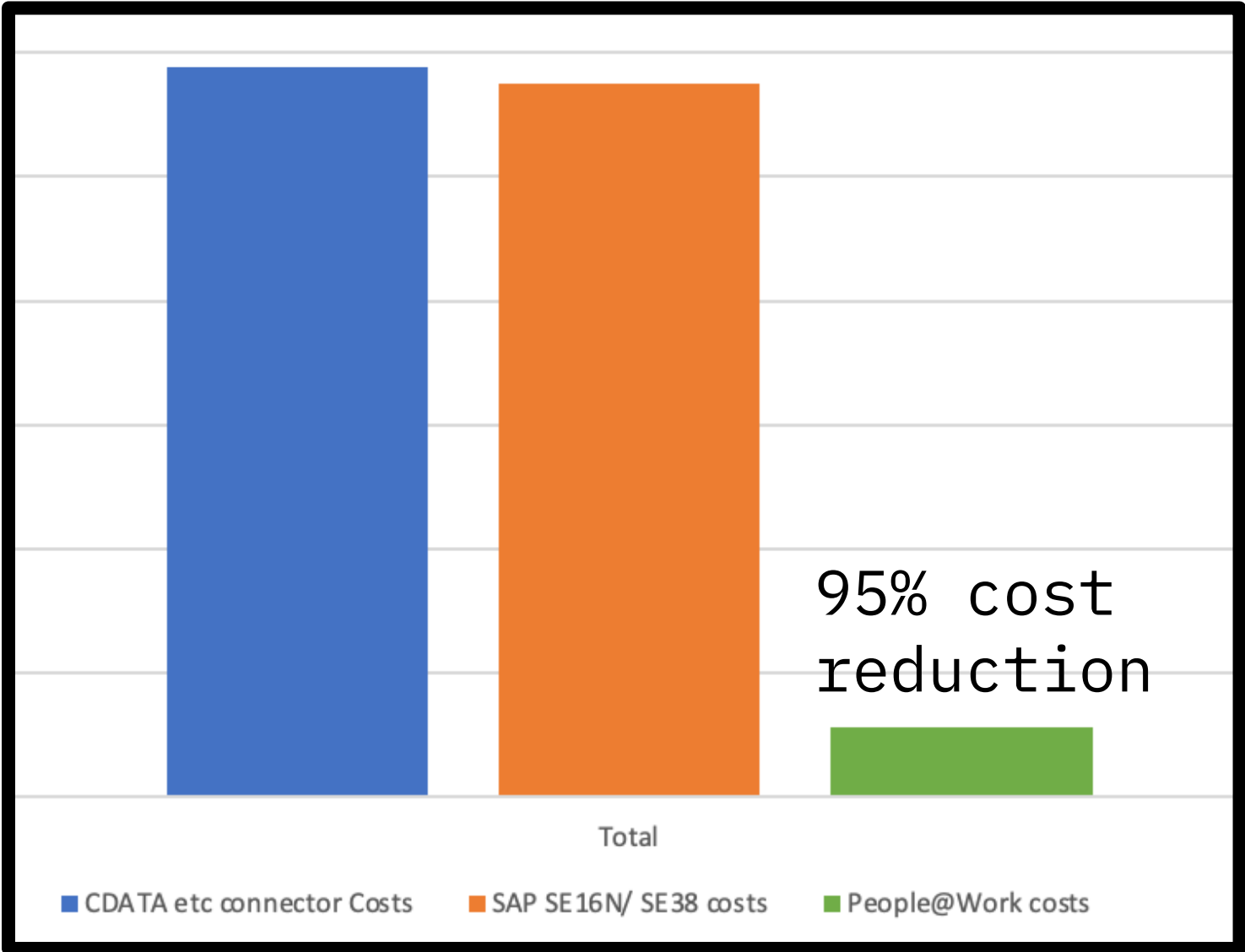
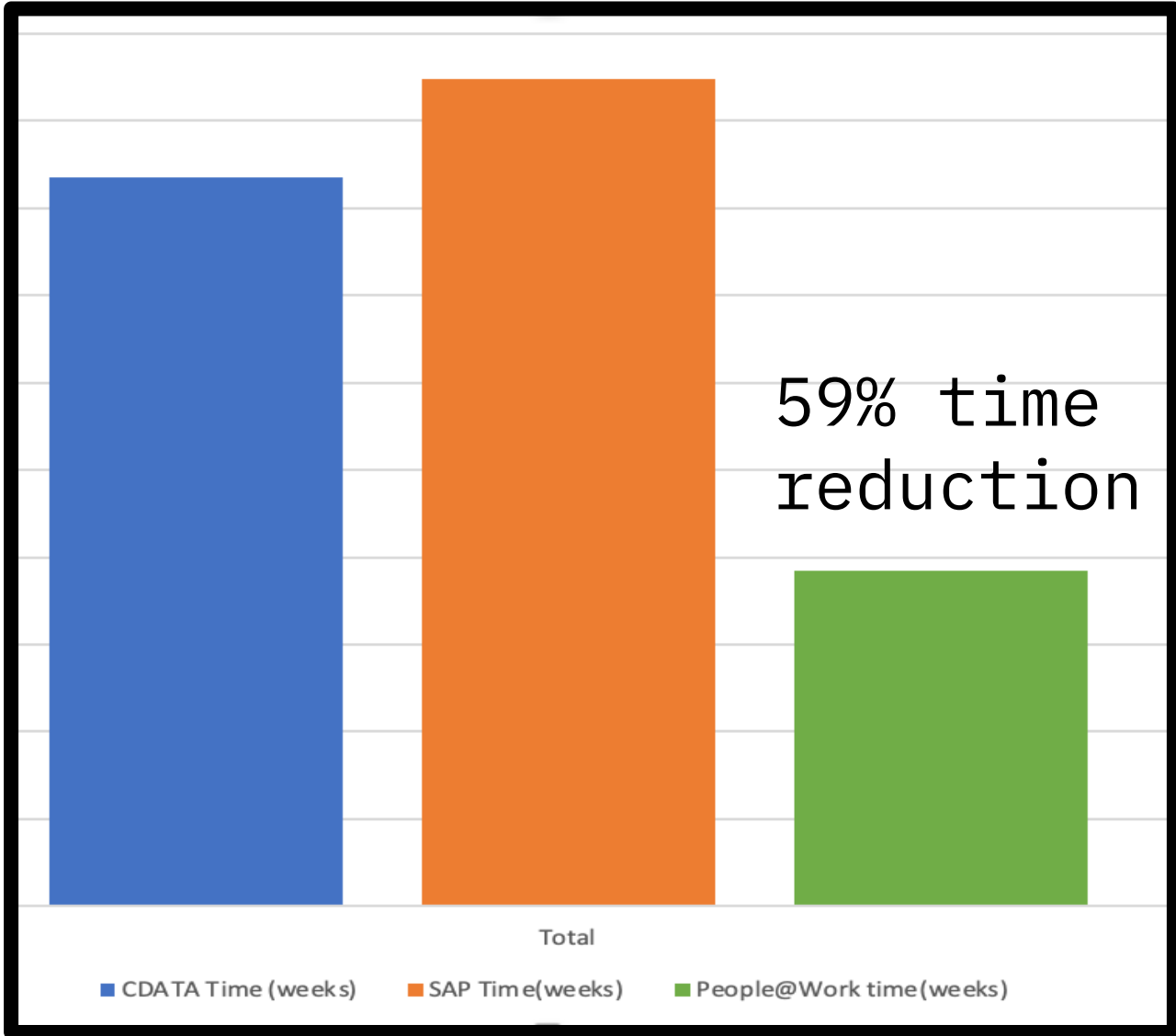
The 'Data' pane on the right shows a search bar and a list of data sources, including 'SAP_Data'.

MS PowerBI based add-in for TCODES, reports, tables & views from SAP

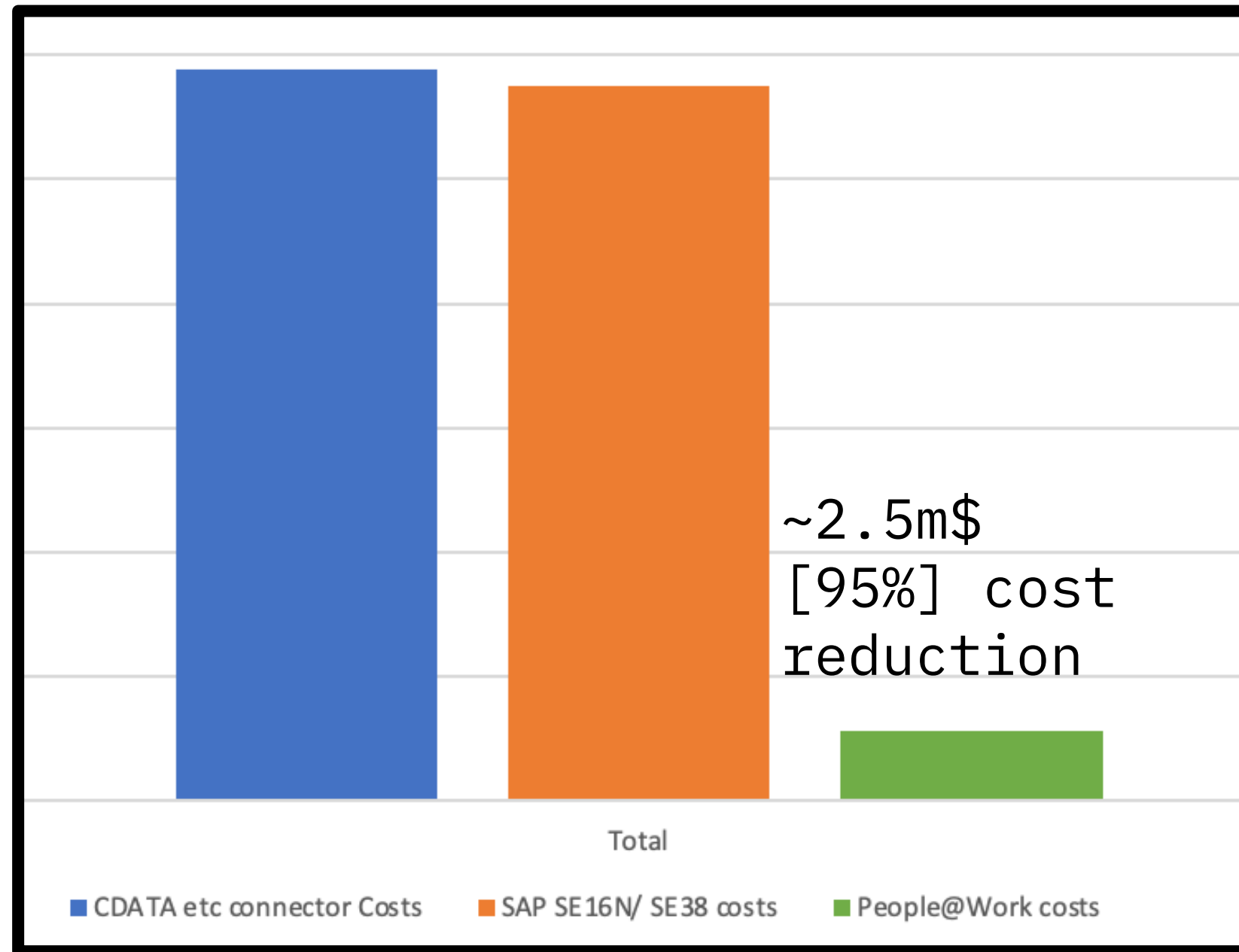
CData based add-in to MS Excel



Impact (\$ and Time saving)

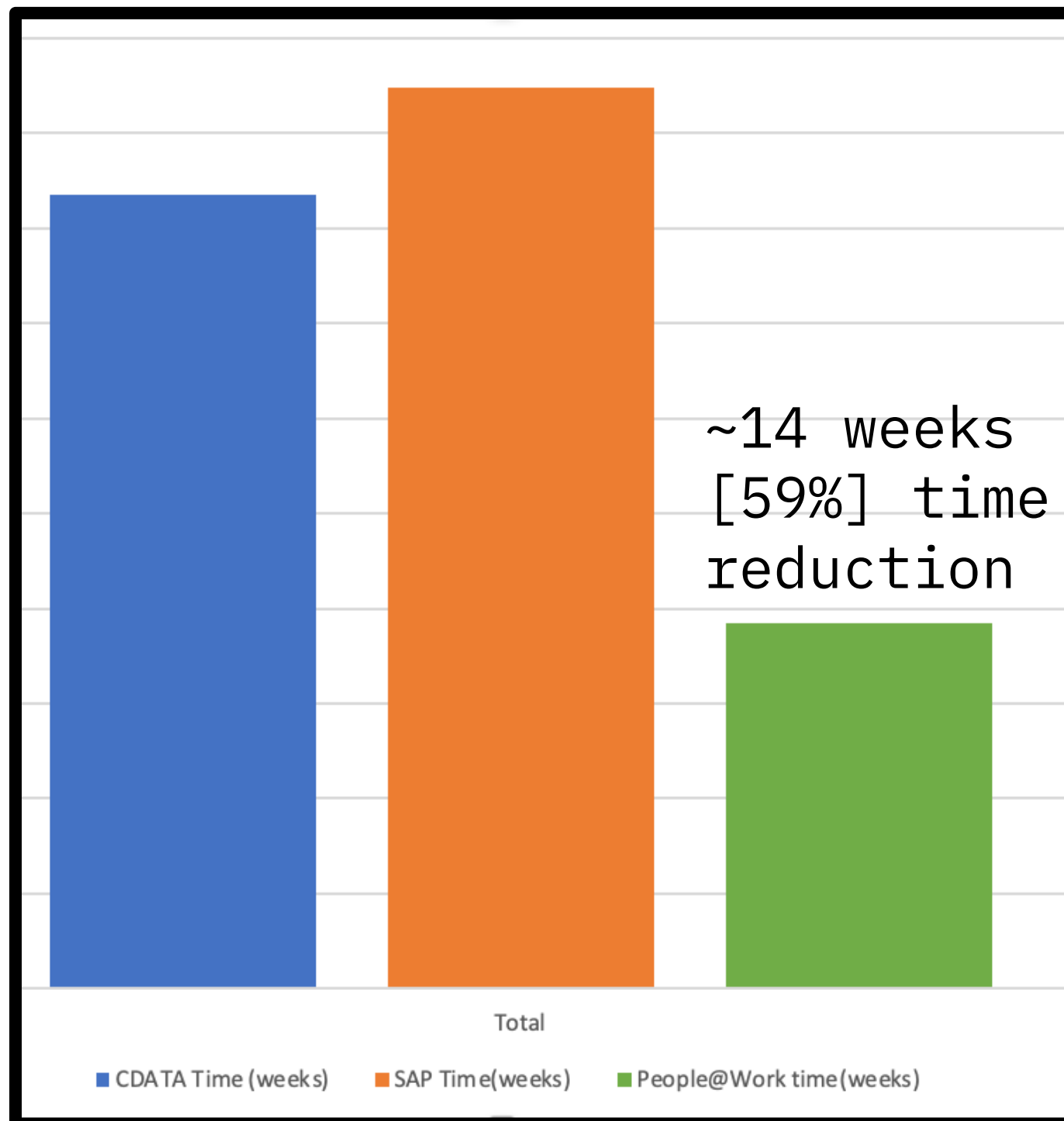
Component	Cost impact (in US\$)	Time impact (in weeks)
MS Excel/ PowerBI + People@Wo rk	 <p>95% cost reduction</p> <p>■ CDATA etc connector Costs ■ SAP SE16N/ SE38 costs ■ People@Work costs</p>	 <p>59% time reduction</p> <p>■ CDATA Time (weeks) ■ SAP Time(weeks) ■ People@Work time(weeks)</p>
Summary	<ul style="list-style-type: none"> Total cost changed from US\$2,600K to US\$145K 	<ul style="list-style-type: none"> Setup time changed 21 weeks to 11 weeks No-code extraction of SAP modeled data like TCODES, Reports, queries etc besides tables & views

Options comparison for 5 TCODES/ 100 tables [~\$2.2m saving]



Phase	Total Tables extractor like CDATA etc	Total SAP SE16N / SE38	Total People@Work costs	\$Cost Saving	%Cost Saving
1-Plan	4,800	4,800	1,600	67%	3,200
2-Setup	4,160	8,800	1,440	84%	7,360
3-Build	2,435,920	2,435,920	1,760	100%	2,434,160
4-Go live & hypercare	16,416	16,416	6,400	61%	10,016
5-Operations	193,205	181,650	134,076	26%	47,574
Total	2,654,501	2,647,586	145,276	95%	2,502,310

Comparison for 5 TCODES/ 100 tables – time saving



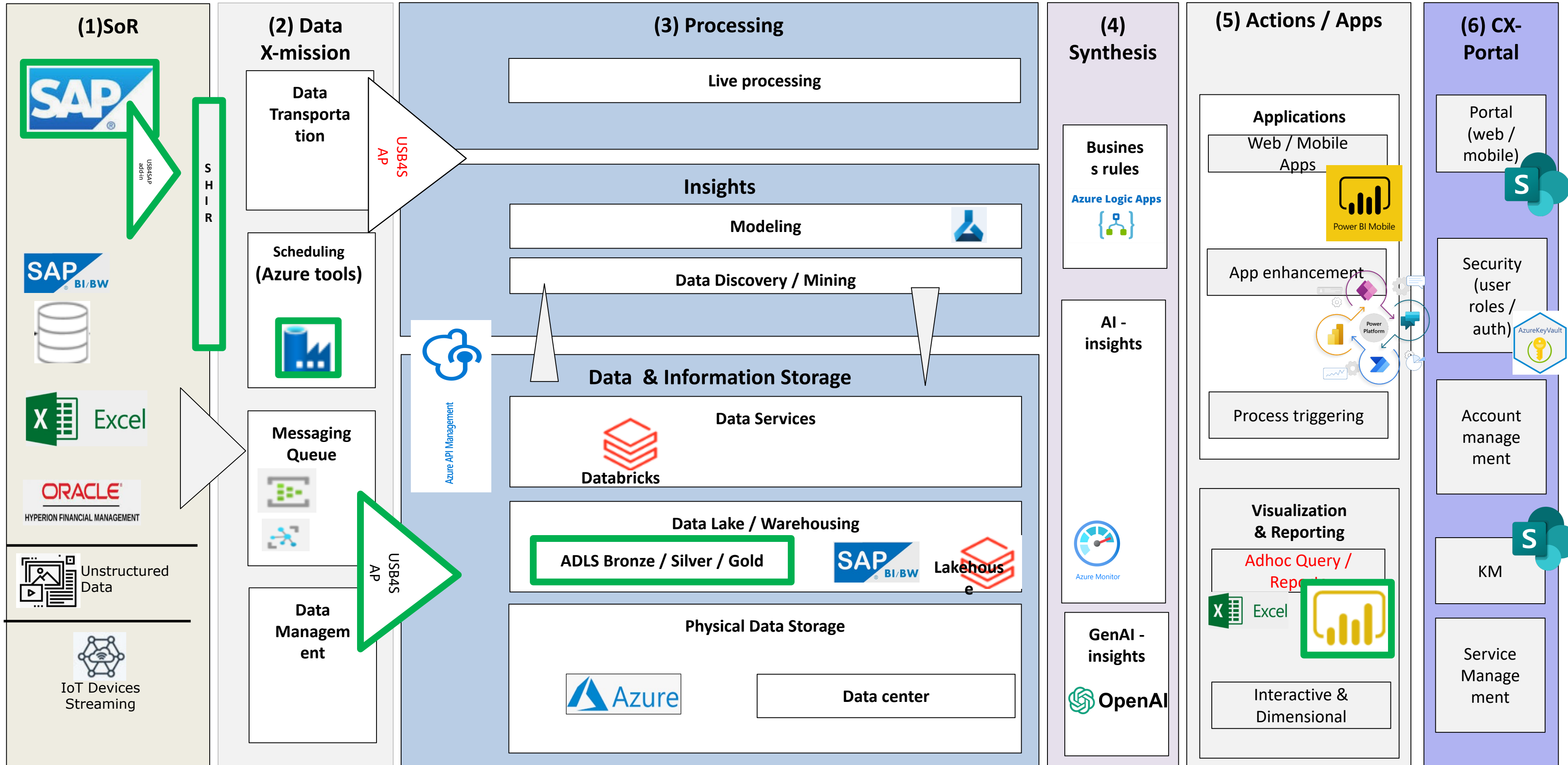
Phase	CDATA Time (weeks)	SAP Time (weeks)	People@Work Time (weeks)	Time Saving (weeks)	Time Saving (%)
1-Plan	4	4	2	2	50.00%
2-Setup	6	9	2	7	80.00%
3-Build	7	7	2	5	73.13%
4-Go live & hypercare	4	4	4	0	0.00%
Grand Total	21	24	10	14	59%

PoC solution architecture

Legend

Endstate architecture components

INCLUDED IN POC

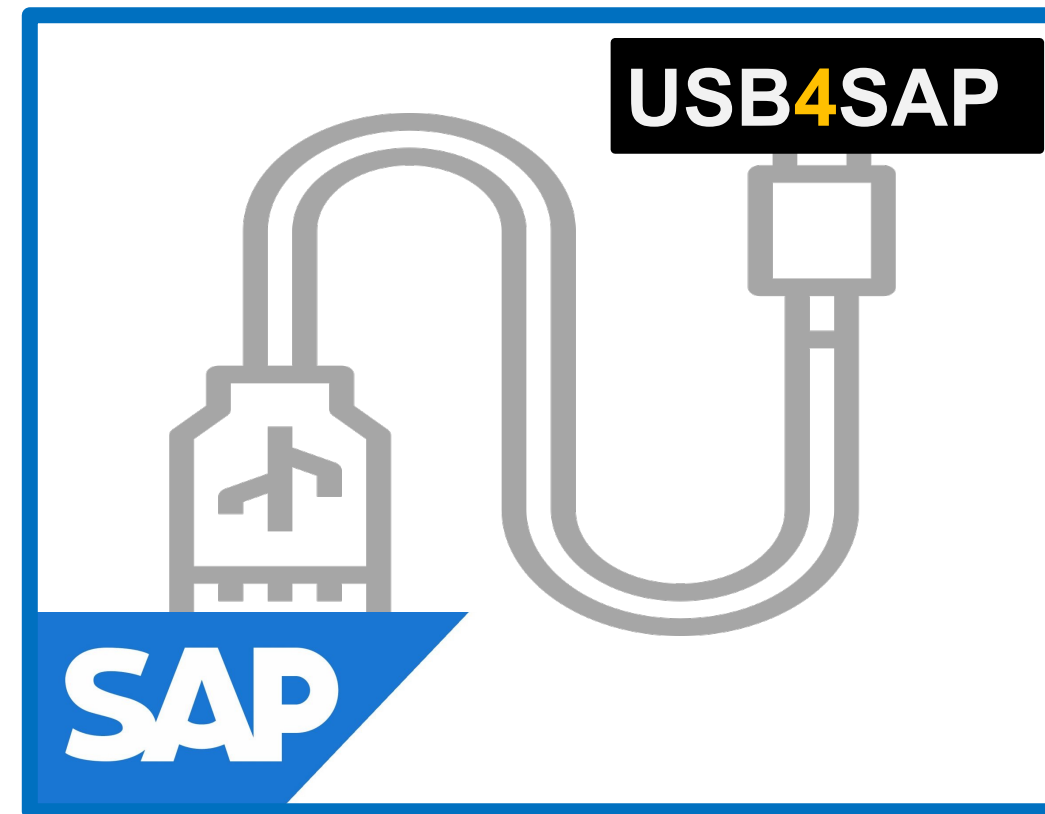


People@Work for MS Excel & Power Platform

hello@ecoservity.com

www.ecoservity.com

+1.214.519.9601



Power BI



Power Apps



Power Automate



Power Virtual Agents



Microsoft
Azure

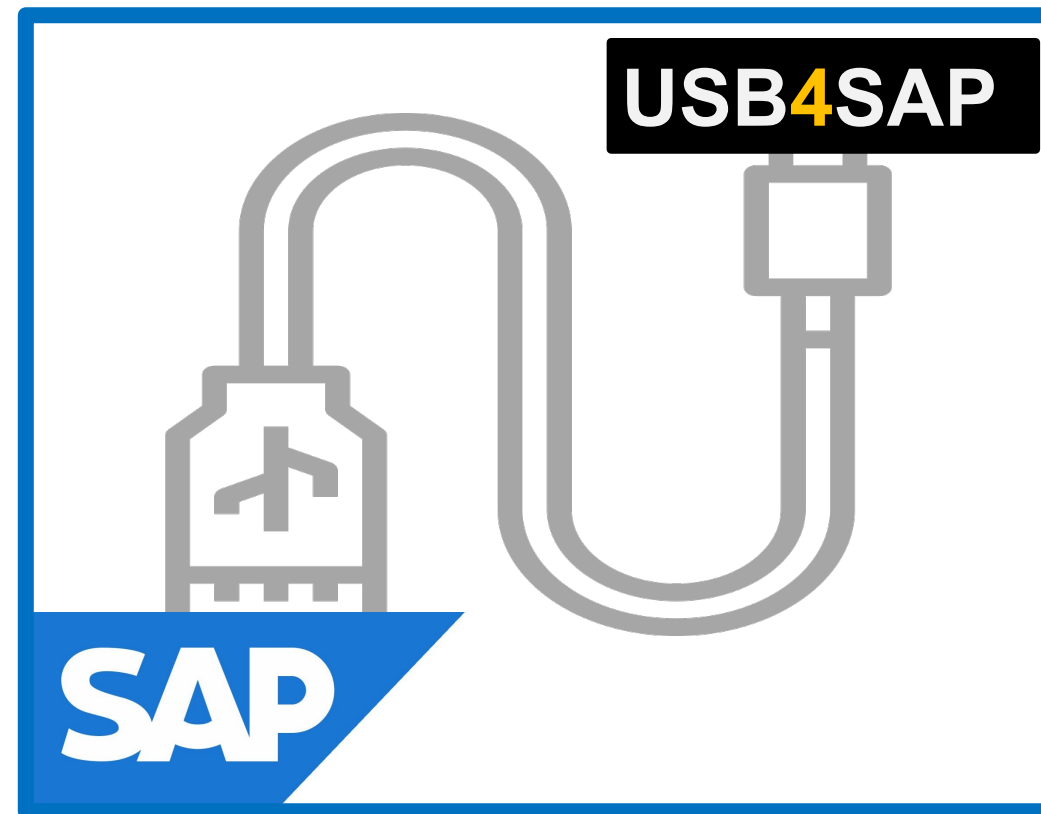
People's #RightToInformation@Work

People@Work for MS Excel & Power Platform

hello@ecoservity.com

www.ecoservity.com

+1.214.519.9601



Power BI



Power Apps



Power Automate



Power Virtual Agents



Microsoft
Azure

People's #RightToInformation@Work

Appendix1 - USB4SAP

SAP® Certified
Integration with SAP NetWeaver®

No-code API for analytics, automation and AI with SAP

1.3 M+
models

850K+
tables

450K+
reports



Simple
API

- Full & delta SAP data to any datalake, datawarehouse or application
- Self-service, business ready in PowerBI, Power Platform and AI/GenAI
- SAP native security, zero-infra and live

