

AI adoption for businesses.
Work Smarter. Faster.

Step-by-Step Guide for Microsoft Copilot Launch

eleks

 **Microsoft**
Solutions Partner

About Microsoft Copilot Test-drive

For partnering companies interested in implementing Microsoft Copilot, ELEKS, a Microsoft-certified partner for Data and AI solutions, offers an eight-week program.

This program is designed to assist businesses in every step of the process, from designing a strategy and launching Microsoft Copilot to measuring its impact on the company's success. It involves close collaboration with the organization's business stakeholders, decision-makers, and test teams.

Typically, the journey towards AI implementation starts with a fundamental question – "What do we want to achieve with AI in the long run?". Defining an AI strategy can be a lengthy process, involving months of discussions and strategic workshops. However, for companies planning to launch Microsoft Copilot, it's not necessary to have the entire AI strategy in place.

We recommend starting with simple use cases with a significant business impact, such as customer support,

report generation, smart search, or industry-specific use cases that have demonstrated efficiency. The launch of Copilot can be a sprint, rather than a marathon. In the age of AI, companies should iterate quickly and discover what works best for their business.

ELEKS' team of experts in strategy, user experience, business model design, architecture, and implementation has developed a straightforward 3-step Microsoft Copilot test-drive process. This process is designed to help companies navigate the AI landscape and enhance business performance with the help of Copilot.

Over the course of eight weeks, you will have the opportunity to outline use cases, prioritize them using a specific scoring mechanism, select use cases for the initial implementation, and see for yourself how Copilot performs with your test group.

MICROSOFT COPILOT LAUNCH ROADMAP

USE CASES



Use case definition during online whiteboarding sessions with business stakeholders, test groups, plus users' interviews.

WORKFLOWS



Workflows and tech solution design with groups of experts from ELEKS and participating companies. During the onsite workshop, the team outlines the core components.

BUILD AND LAUNCH

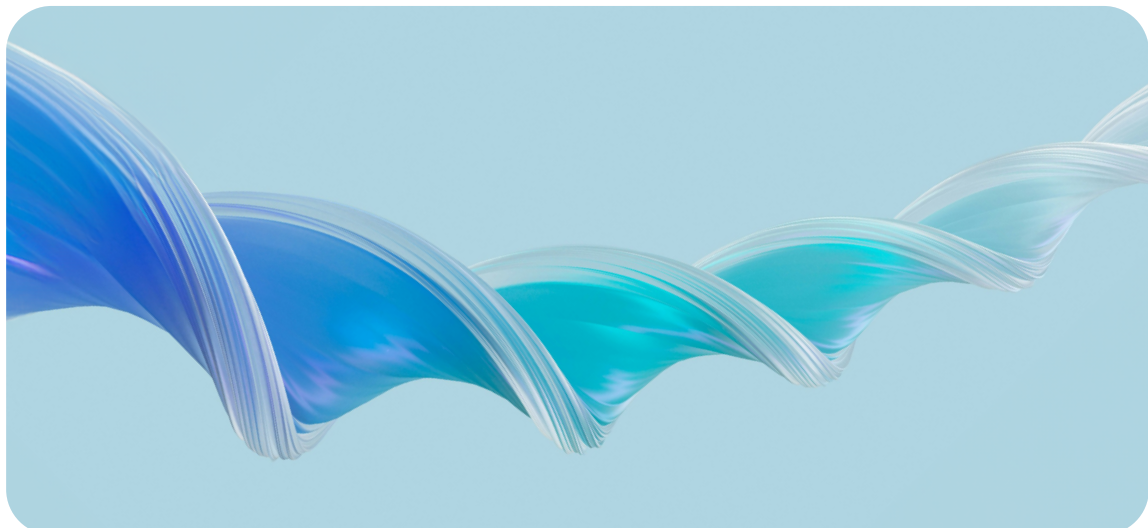


Prototype launch when, after up to 6 weeks of building the pilot by ELEKS' team, we launch the solution with the test group or test teams within your organization. During this phase, we explore.

SUPPORT



After the Copilot test-launch, the ELEKS team provides support for enhancing Copilot and implementing it across the organization or across multiple teams in the company.



Microsoft Copilot Launch Roadmap

Total time spent by company:

3.5 hours online and 1-day onsite workshop

01 USE CASE DEFINITION

Format: Online, whiteboarding session

Participants: business leaders, participating teams

Outcome: design and approve a domain-specific use case for the test-drive

During the test-drive project, we recommend that companies focus on ROI first. How much time can you save, and what pain points will be eliminated? What impact will Copilot have on business KPIs? We have outlined all these questions in our Copilot Launch guide.

We will help you prioritize use cases based on your business goals and identify scenarios with the most potential for impactful implementation. We work with companies to map their industry's use cases to their business reality and facilitate discussions on AI best practices across sectors, including LegalTech, banking, accounting, and professional services.

02 WORKFLOWS AND TECHNOLOGY SOLUTION DESIGN

Format: Onsite, 1 day

Participants: managers, business and tech experts

Outcome: defined workflow map, data structure, infrastructure architecture for the use-case implementation

To launch Microsoft Copilot successfully, we need to set up its fundamental blocks: workflows, data structure, and infrastructure architecture. These are essential for effective AI implementation.

In step 2, we prepare the data structure, make necessary adjustments, or add missing pieces to the infrastructure architecture, and ensure that new workflows are appropriately designed. By working collaboratively with business and technology experts, we create a state-of-the-art solution that is both scalable and robust.

03 BUILD AND LAUNCH

Format: ELEKS execution team

Duration: 5-6 weeks

Outcome: Copilot use-case launch

It is time to put Copilot to the test. As with any AI solution, Copilot might require some adjustments. Therefore, we recommend running a prototype with a test group to gather first-hand feedback from participants.

During this phase, the ELEKS team works on the prototype and consults with business and technology stakeholders on the client's side. We help you ensure that when you launch Copilot on a larger scale and more teams start using it, it runs smoothly and meets your expectations.

04 ONGOING SUPPORT

Format: ELEKS team

Duration: Ongoing

Outcome: Copilot update and enhancement

ELEKS is a trusted partner for Copilot design, implementation, launch, and support on this and every next step.

After the Copilot test launch, the ELEKS team provides support for enhancing Copilot and implementing it across the organization or across multiple teams in the company. We work closely with your team and with Microsoft to ensure you get the maximum value from your Copilot implementation.

Participation Q&A

WHO CAN PARTICIPATE?

Selected companies who run their operations on the Microsoft ecosystem, specifically but not limited to Office 365 and Azure.

WHAT ARE PARTICIPATION REQUIREMENTS?

Having experience in Azure AI services is recommended, but not mandatory for a company to participate. Companies may have a selected use-case for the test implementation. ELEKS will work with participating companies to design the use case with highest ROI. Your company should be ready to dedicate up to 5 hours of worktime to the brainstorming and discussion sessions for the selected team members.

HOW CAN I SIGN-UP FOR MICROSOFT COPILOT TEST-DRIVE?

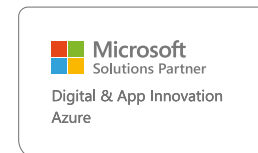
ELEKS Microsoft Copilot test-drive program is a part of our Global Partnership commitment as Microsoft Solutions Partner for Data and AI. The program is managed by ELEKS partnership office. Please reach out to Anton Arapetyan, Head of Partnerships NA at anton.arapetyan@eleks.com for the details.

WHO OWNS THE RESULTING IP?

Microsoft Copilot solution, designed and developed together with ELEKS, remains the property of the participating company. ELEKS does not retain any IP rights for the resulting solution.

IS ELEKS CERTIFIED FOR COPILOT IMPLEMENTATION?

ELEKS is Microsoft Solutions Partner certified for two foundational competencies for Copilot implementation: "Data and AI" and "Digital and App Innovation". As a Solutions Partner for Data&AI ELEKS, ELEKS demonstrates its broad capability to help customers manage and govern their data across multiple systems to build analytics and AI solutions. As a Solutions Partner for Digital & App Innovation, ELEKS helps customers modernize existing applications and build cloud-native apps.



Why choose ELEKS as your partner for AI solutions

- Over 3 decades empowering global enterprises with data-driven transformation.
- As a certified Microsoft partner for Data and AI solutions, we bring expertise and skills to deliver data-driven projects with quality and proficiency.
- An award-winning data science team combining mathematical expertise, software proficiency, and extensive business domain knowledge unmatched in the industry.
- Proven record of accomplishment in delivering complex data science projects end-to-end across multiple industries, including LegalTech, finance, and professional services.
- Total commitment to delivering your project and sharing both the responsibility and development risks with you.
- Flexible, cost-effective collaboration models that align with your needs.
- Focus on long-term strategic partnerships to deliver maximum value through a deep understanding of your industry-specific needs.

About ELEKS

ELEKS is a global software engineering and technology consulting provider. For more than 30 years, we have built custom software solutions that support the business growth of our clients.



USA HQ

401 N Michigan Ave,
Chicago, IL 60611

● Development centers

LVIV

7 Naukova St., Building G
Lviv 79060, Ukraine
+380-32-247-0357

KRAKOW

Fabryczna Office Park
al. Pokoju 18, 31-564
Kraków, Poland
+48 530 228 025

ZAGREB

Sky Office Tower Ul.
Roberta Frangeša
Mihanovića 9, 10110,
Zagreb, Croatia

TALLINN

Viru väljak 2, Harju county,
10111, Estonia
+372 674 3621

BERLIN

Eichhornstraße 3, 10785
Berlin, Germany
+49-30-30015992

RZESZÓW

2 Zamkowa St.,
Apt. 5A, Rzeszów
35-032, Poland
+48-17-859-9050

SPLIT

Put Orišća 11,
21000,
Split, Croatia

● International offices

LONDON

Centralpoint, 45 Beech
Street, London, United
Kingdom, EC2Y 8AD
+44 20 4583 0843

TORONTO

100 King Street West,
Suite 5600, Toronto,
ON – M5X 1C9,
Canada

ZÜRICH

Seefeldstrasse,
69 8008 Zürich,
Switzerland
+41 43 216 41 73

LAS VEGAS

10091 Park Run Drive,
Suite 200 Las Vegas,
NV 89145, USA
+1-702-919-6222

● International offices

AMSTERDAM

Vinoly (office 135),
Gustav Mahlerplein 2
Amsterdam, 1082 MA
Netherlands

● Affiliates

TOKYO

18F, Yebisu Garden Place
Tower, 4-20-3 Ebisu,
Shibuya-ku, 150-6018,
Tokyo, Japan