

Get to know Elina!

Your everyday assistant for
early childhood education

www.elinaedu.com

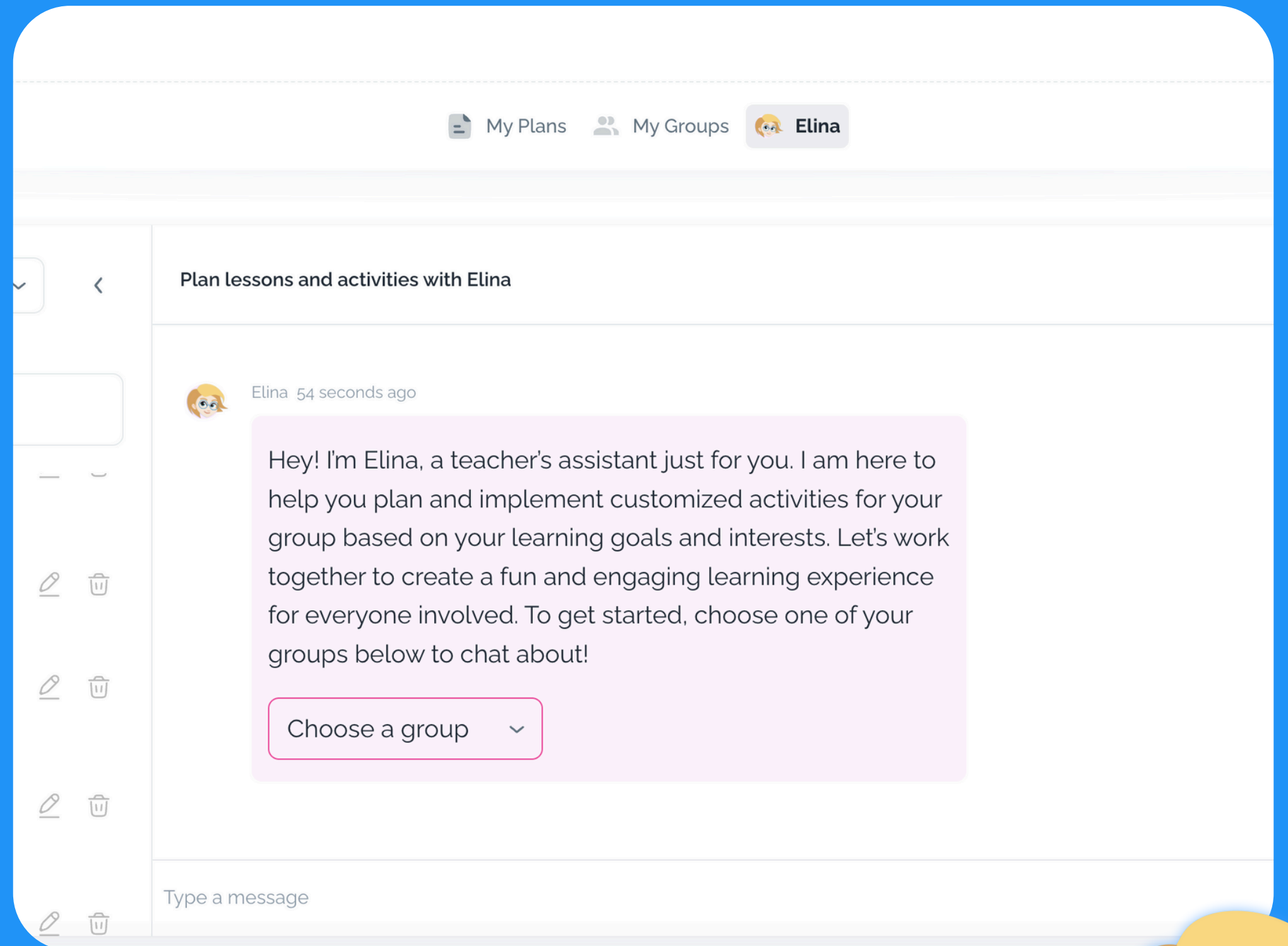


What is Elina?

Elina is an early childhood education professional who uses artificial intelligence and has a thorough command of her field.

You can ask her for advice on supporting the child's growth and development, age-appropriate activities, developing interaction skills, and cooperation with guardians.

Elina combines theory and practice seamlessly, offering insights into what high-quality early childhood education can be.



Where does Elina help?

- Eases the planning work of early childhood education professionals
- Improves pedagogical skills
- Offers continuous on-the-job learning opportunities
- Promotes child-oriented early childhood education

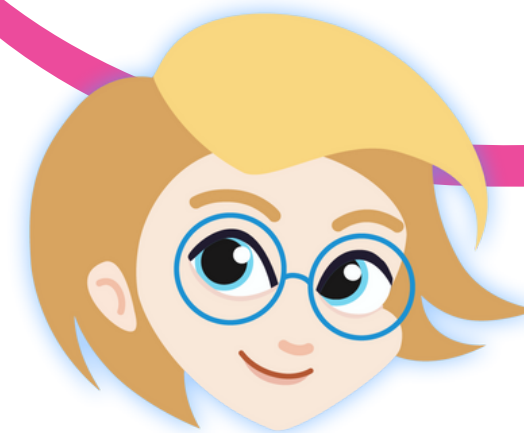
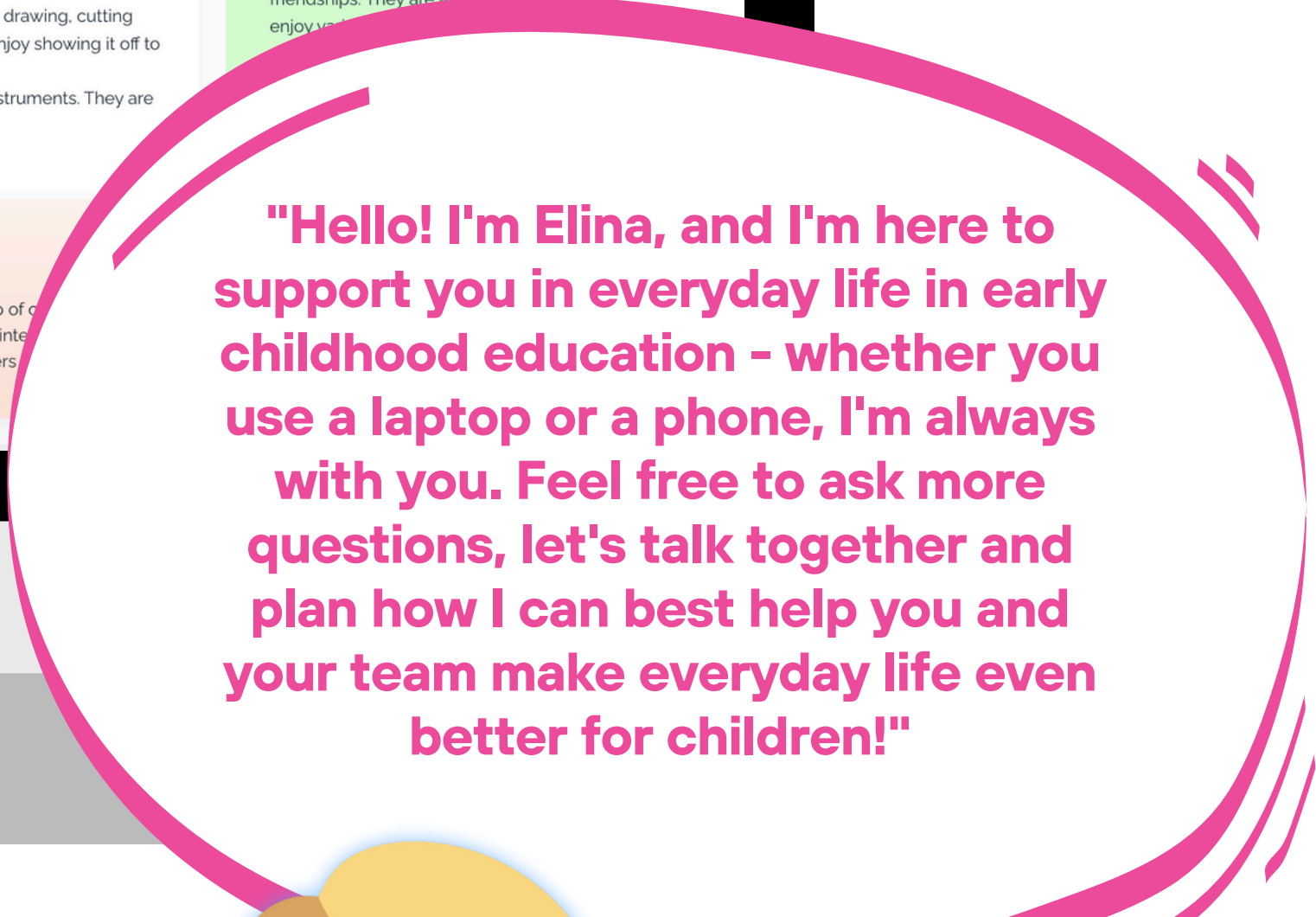
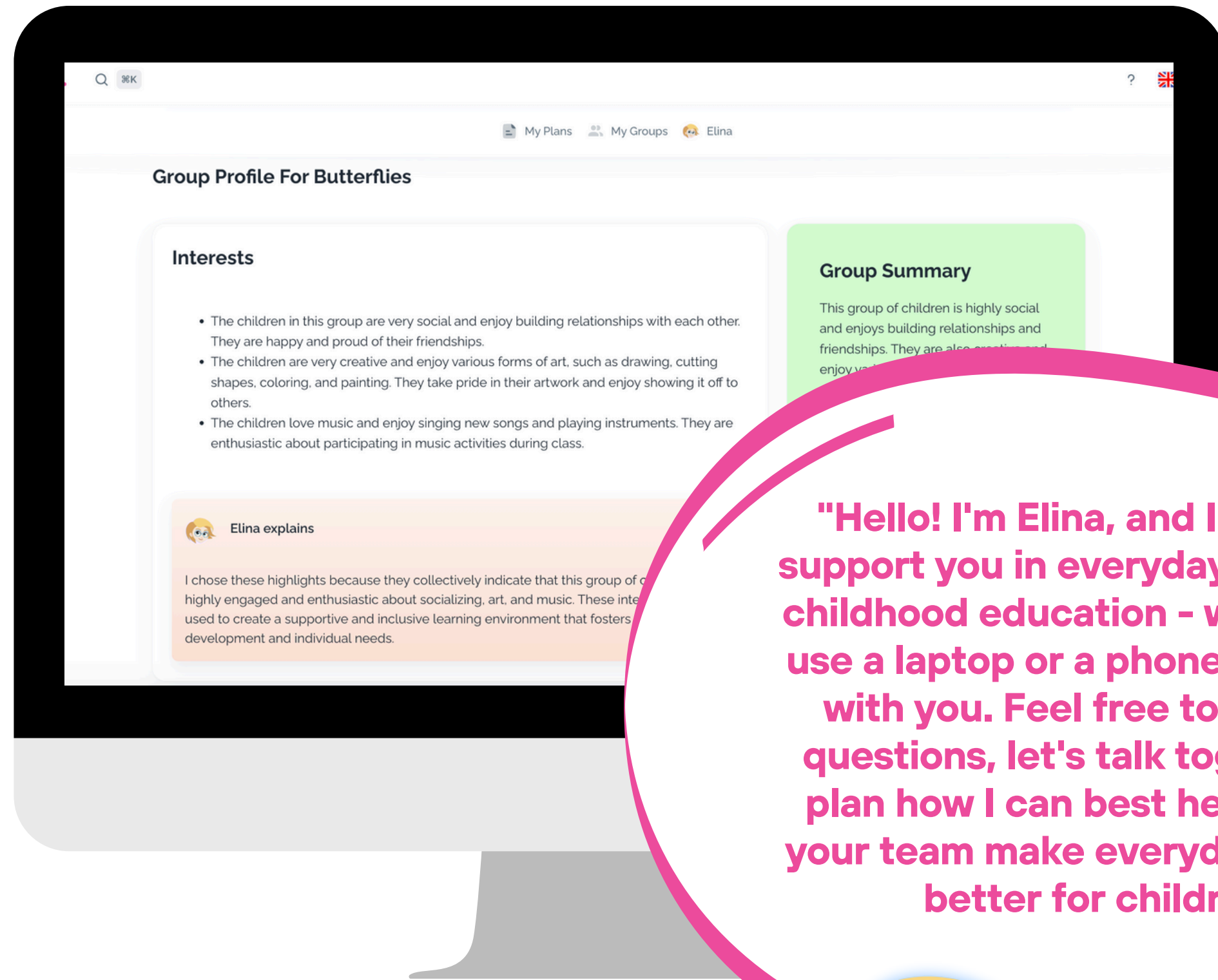
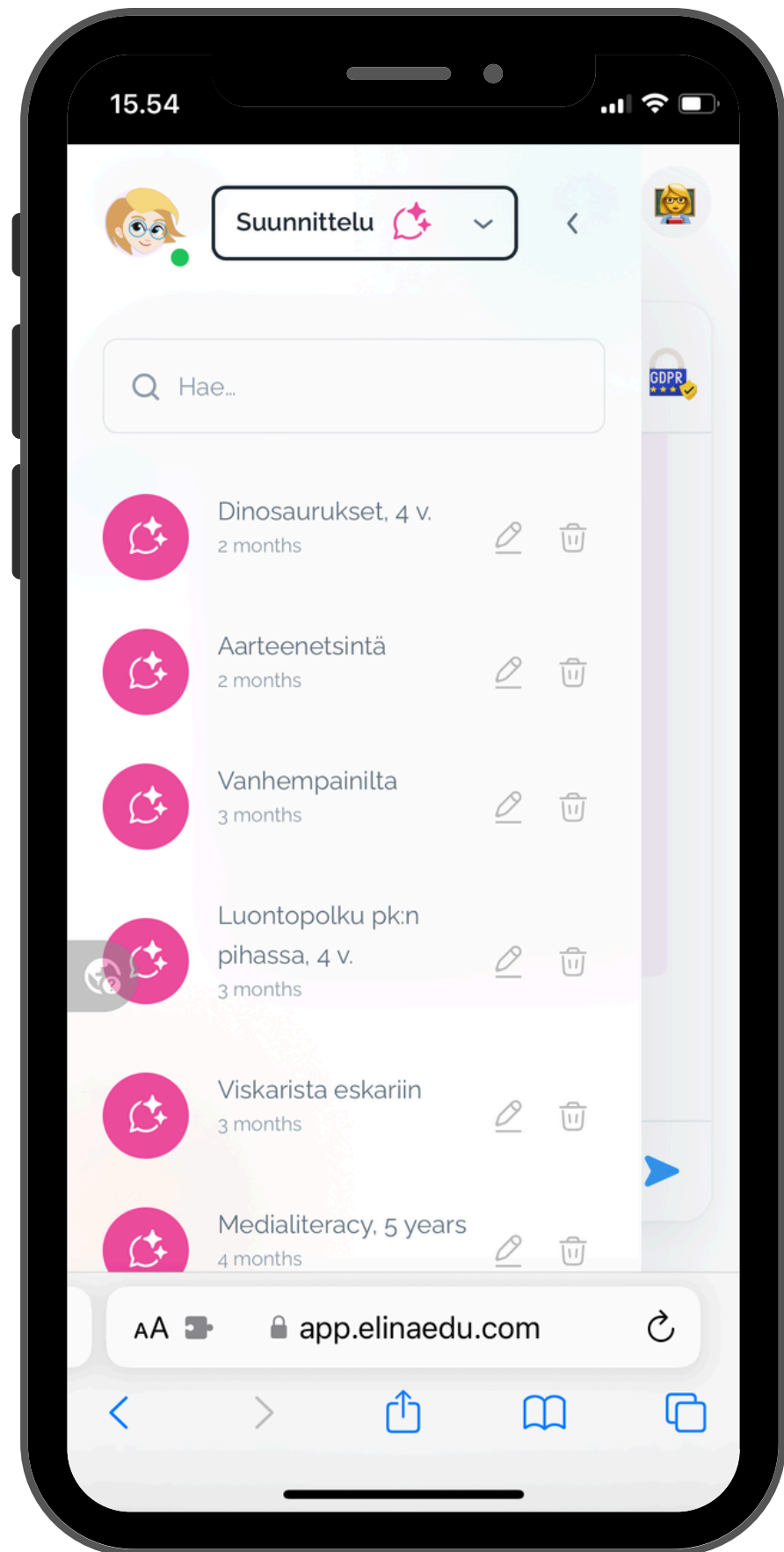




Elina takes care of the routines so that you can focus on the essentials.

- Presence and interaction
- Creativity and play
- Individual guidance
- Happy learning experiences





Security & privacy first

We process data with due care and in accordance with the requirements set by applicable legislation.

We do not use your data for the purposes of fine-tuning the Elina service. Your conversations with Elina will remain private and will not be used for any other purpose. Elina does not need the children's personal information.

elina.



Hear from our users!



"I love Elina when she explains the benefits of each activity, and it's easier for me to explain to parents the reasons why doing this is important. All in all, it is a good app for any teacher who wants to provide interactive activities".
- Deviya



"I like Elina very much. It guides me with the materials I need and the main goals of the activity. Even if I only list the materials that I have available, Elina gives ideas for activities related to those materials. It's so great!"
- Aqilah



"I got good overall plans that also took the learning environment into account! Elina sped up the design work and I was able to modify my preliminary ideas into good wholes with her help."
- Early education teacher

Smooth technology to support daily work

86%

of users found Elina to be user-friendly right from the first login.

76%

of users confirms Elina's effectiveness in training planning, emphasizing its usefulness in improving teaching and learning processes.

elina.

elina.

the first step towards the future
of early childhood education.

Contact us!

Email

taina@elinaedu.com

Phone

040 536 1834

Follow us!

IG, Pinterest, YouTube ja LinkedIn

@ElinaEducationFinland

www.elinaedu.com