

Wireless Integrated Projects: Steam Trap Monitoring Connected Services

Get actionable information about the health of your steam traps without having to monitor them on your own



CHALLENGE

Maintaining the integrity of your plant's steam distribution system can be difficult. Regularly monitoring the health of each steam trap can be a significant challenge and tie up unnecessary operator hours. Neglecting these traps, however, can be even more detrimental as operational performance can be impacted by faulty traps.

OUR SOLUTION

The Emerson™ Steam Trap Monitoring Connected Service can provide detailed, regular insight into the health of your steam traps. This infrastructure-as-a-service can help ensure optimal performance of your plant's steam, so operators' time is spent where it is needed most. This subscription service includes a monitoring package of hardware and software, coupled with on-going professional monitoring.

HOW IT WORKS

Emerson's acoustic technology, paired with our connected service offering, provides:

- 24/7 real-time monitoring of your steam traps
- Detailed analytics on each trap
- Weekly reports with insight into each asset's health
- Executive summaries each month
- A subscription-based service that helps avoid capital expenditure

WHAT IF YOU COULD ACCURATELY MEASURE PROCESSES...

...without having to invest significant man hours?

... while focusing on more important tasks?

... and pair them with actionable insight to improve operational performance?



The Rosemount 708 Wireless Acoustic Transmitter provides "real-time" visibility into asset health through non-intrusive, wireless monitoring. Using a combination of acoustic noise and temperature readings, it can reliably identify different steam trap events, such as flooding, blow-through, and even indicate if a trap is plugged.

For additional information or to schedule a consultation, please email: RLSWirelessTechnicalSpecialist@Emerson.com



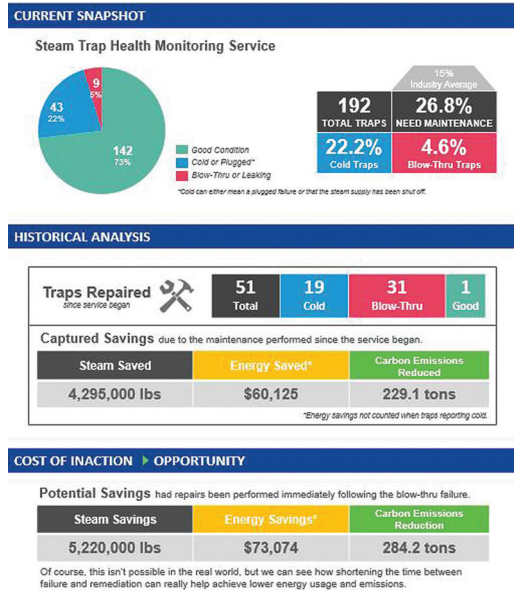
Wireless Integrated Projects: Steam Trap Monitoring Connected Services

EMERSON BENEFITS



FOR ADDITIONAL INFORMATION OR TO SCHEDULE A CONSULTATION, please email: RLSWirelessTechnicalSpecialist@Emerson.com

STEAM TRAP SOLUTIONS



Executive summaries are provided regularly. These summaries provide actionable insight to properly diagnose steam traps and help determine which trap issues are the most critical to be addressed. They also show stakeholders the improved cashflow Emerson's steam trap monitoring service provides in a simple, easy-to-understand format.

The summaries include analytics on:

- Steam trap status
- Captured savings due to early detection and maintenance
- Potential savings had repairs been performed immediately
- Criticality of steam traps needing repair
- Organized trap locations and details

Global Headquarters

Emerson Automation Solutions

6021 Innovation Blvd.

Shakopee MN 55379

USA

+1 800 999 9307 or +1 952 906 8888

+1 952 949 7001

RFQ.RMD-RCC@Emerson.com

Standard Terms and Conditions of Sale can be found at

www.Emerson.com/en-us/pages/Terms-of-Use.aspx

The Emerson logo is a trademark and service mark of Emerson Electric Co.

All other marks are the property of their respective owners.

©2017 Emerson. All rights reserved.

00807-0100-4708 Rev AA

Consider it Solved.

Emerson Automation Solutions supports you with innovative technologies and expertise to address your toughest challenges.

