

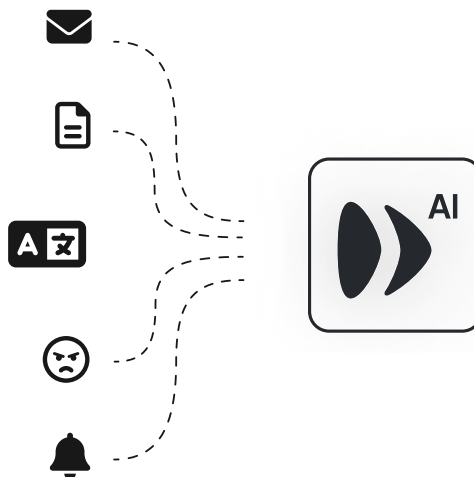


# Discover the latest product releases from Enate

JUNE 2023






# EnateAI: Maximizing efficiency in operations

The tech world is going wild for GPT - and Enate is no exception! We're delighted to announce the launch of EnateAI - a GPT-4 powered tool designed to help businesses maximize efficiency in operations.



Team Inbox	
Ref	Assigned to
⚡ Data Capture	UI Path
📄 Collate Data	Raj Processor
👤 Human Validation	Anna Team Leader
📄 Match Invoice to PO	Raj Processor

## EnateAI has the following capabilities:

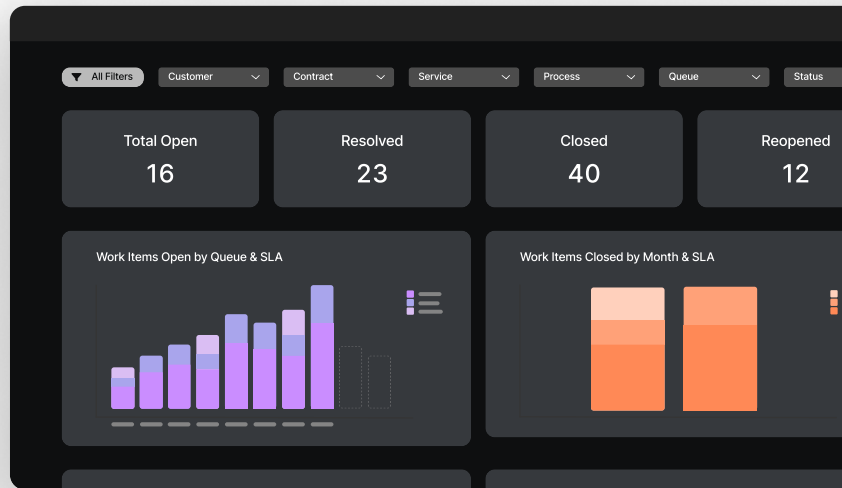
 <b>Email Triage</b> Automatically categorize emails into buckets.	 <b>Sentiment Analysis</b> Identify the emotional tone of emails.	 <b>Data Extraction</b> Extract data from email attachments.	 <b>Thank You Analysis</b> Know when 'thank you' emails need action.	 <b>Foreign Language Fluency</b> Understand and process foreign language emails.
---	--	---	--	---

Using EnateAI, businesses remove the complexity and cost of paying for third-party AI vendors and training machine learning models. It's integrated within Enate's platform and delivers over 90% accuracy, saving crucial time on repetitive tasks and enabling more value-added work.

EnateAI is free to current Enate customers and powered by the ultra-secure and private Microsoft Azure OpenAI Service. We're proud to be the first Microsoft ISV Partner to bring an OpenAI product into production. [Learn more.](#)

# Sophisticated platform reporting: PowerBI now available

We're pleased to announce that we've taken a big leap forward in reporting. Supported by Microsoft's extensive PowerBI platform, reporting functionality is now available for Team Members and Team Leaders.

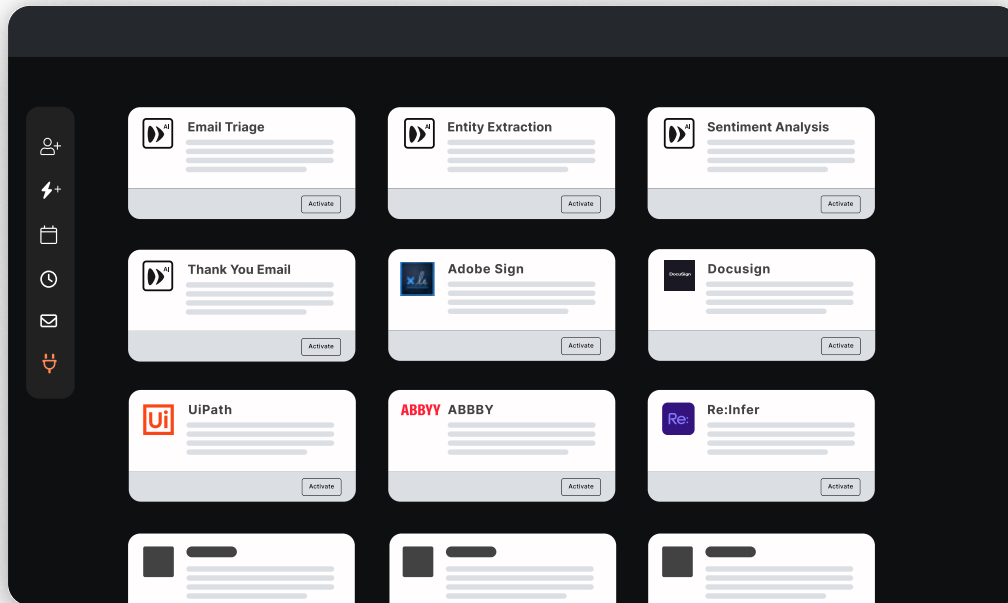


## Team Leaders and Members can...

- Build, create and share reports.
- Customize the design with data visualization and branding.
- Analyze key metrics filtered by customers, tickets, cases and overdue items, all within a set date range.

Reports have been built to flex to the specific needs of businesses, so you can play with the tool until it aligns with your priorities and simply save it when you're finished. The advanced editing option offers a host of visualization options that will bring your data to life. Our reporting feature is available out of the box and is free to current Enate customers.

# Enate Marketplace: Integrations to help you level up



Enate's in-platform Marketplace has been making some big advances in the AI space and has added a number of GPT-4 driven integrations to support users with their day to day activities.

EnateAI is free to current users and can be switched 'on' in the marketplace. Additionally, users can access integrations such as UiPath, Azure and ABBYY via the marketplace.

# About Enate

Enate was born out of a need to give business leaders full visibility over their operations, and house all work in one place. Too often, processes are scattered in various pockets, making it hard to see the bigger picture. Enate solves this with one end-to-end platform to manage everything. View, manage and track workflows, identify automation opportunities, assign tasks to the right resource and become more efficient.

Enate AI is powered by GPT-4, and the latest product release from Enate. It's integrated into the platform and offers 5 exciting features to help businesses leverage AI in operations including:

- Email triage
- Sentiment analysis
- Data extraction
- Automated email queries

## To explore opportunities with Enate connect with our team below:

### APAC



**Atish Aziz**  
Head of Partnerships  
atish.aziz@enate.io  
+91 93308 15104

### Europe



**Joe Deely**  
Head of Alliances  
joe.deely@enate.io  
+44 7979 598 935

