

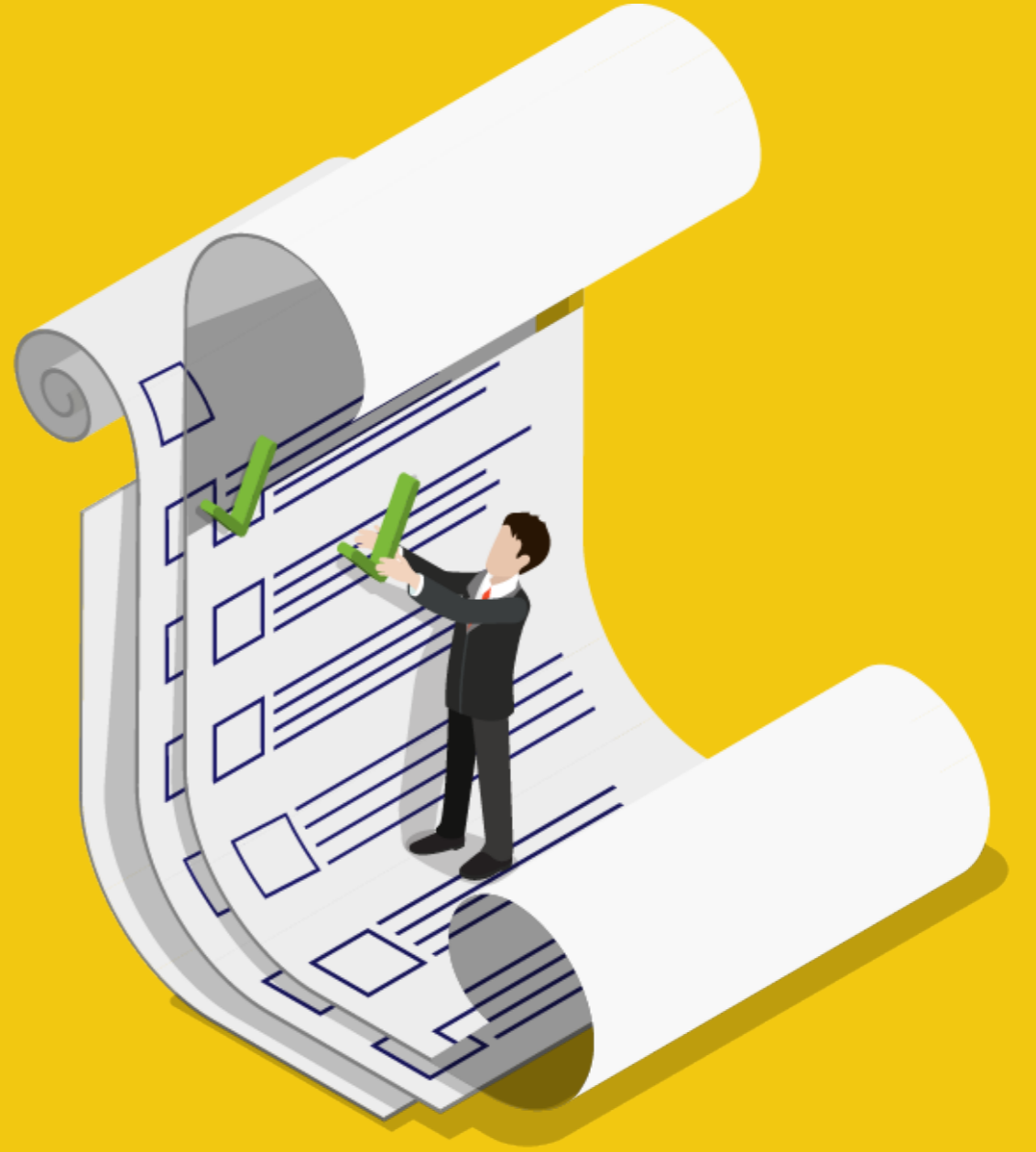


A Power BI report showing the status of Digital Transformation and Microsoft 365 Adoption of your company

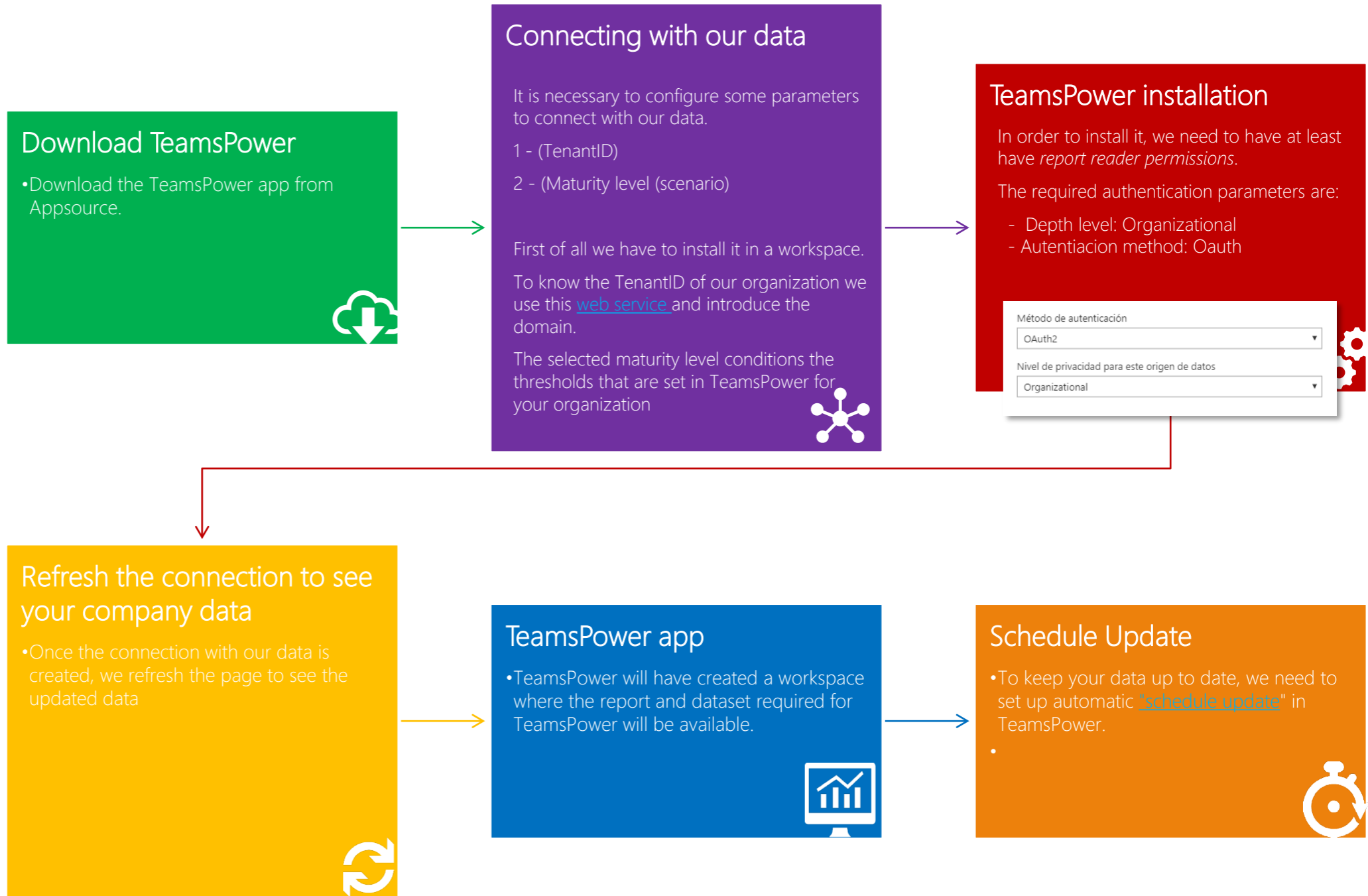
Installation process, configurations and technical aspects



Installation process



Installation process (Connecting TeamsPower with our data)



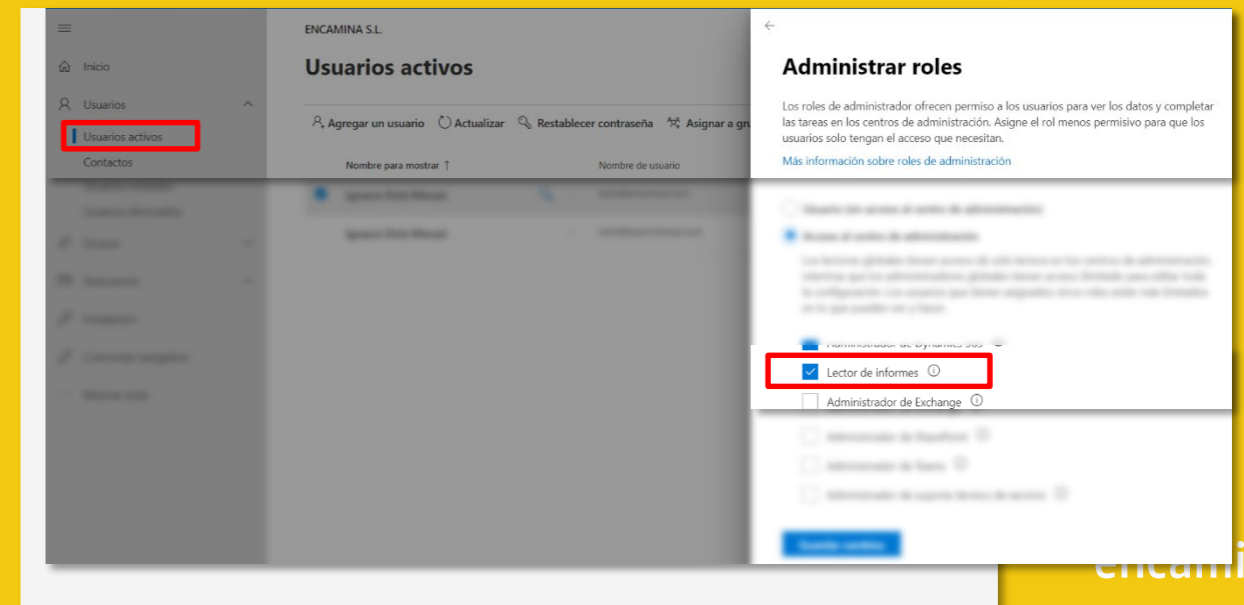
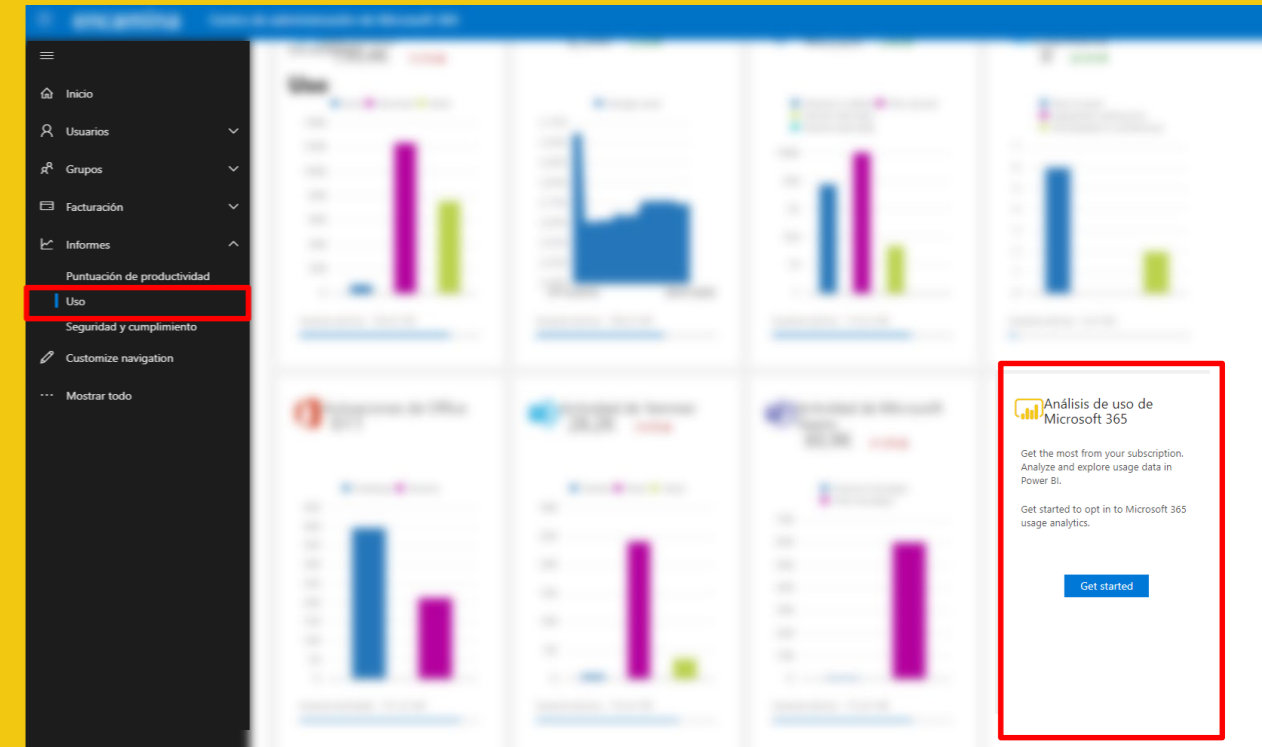


Technical considerations

Technical considerations (before installing TeamsPower)

- Before installing TeamsPower You need to enable Microsoft365 [Usage Analysis](#) from the **office365** Admin Portal.
 - In the admin center section of office, we need to navigate to reports > use > enable Microsoft 365 usage analysis > Get started (do this step ONLY if it's not enabled)
- The user who installs the TeamsPower app must have at least the "report reader" permissions
 - This setting is available from the office management portal. [Find out more](#)
 - Permissions can only be granted by the **Office365** administrator.
- Once the app is installed with this profile, it can be shared to users in the organization you want.

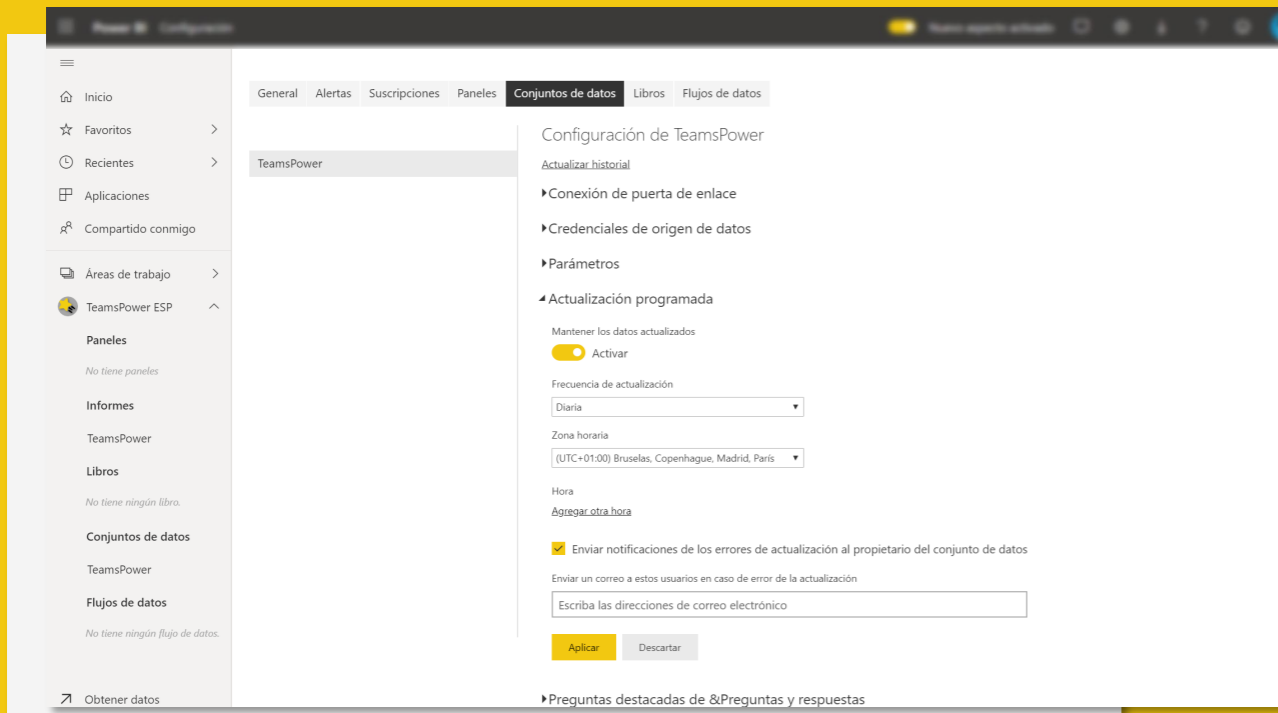
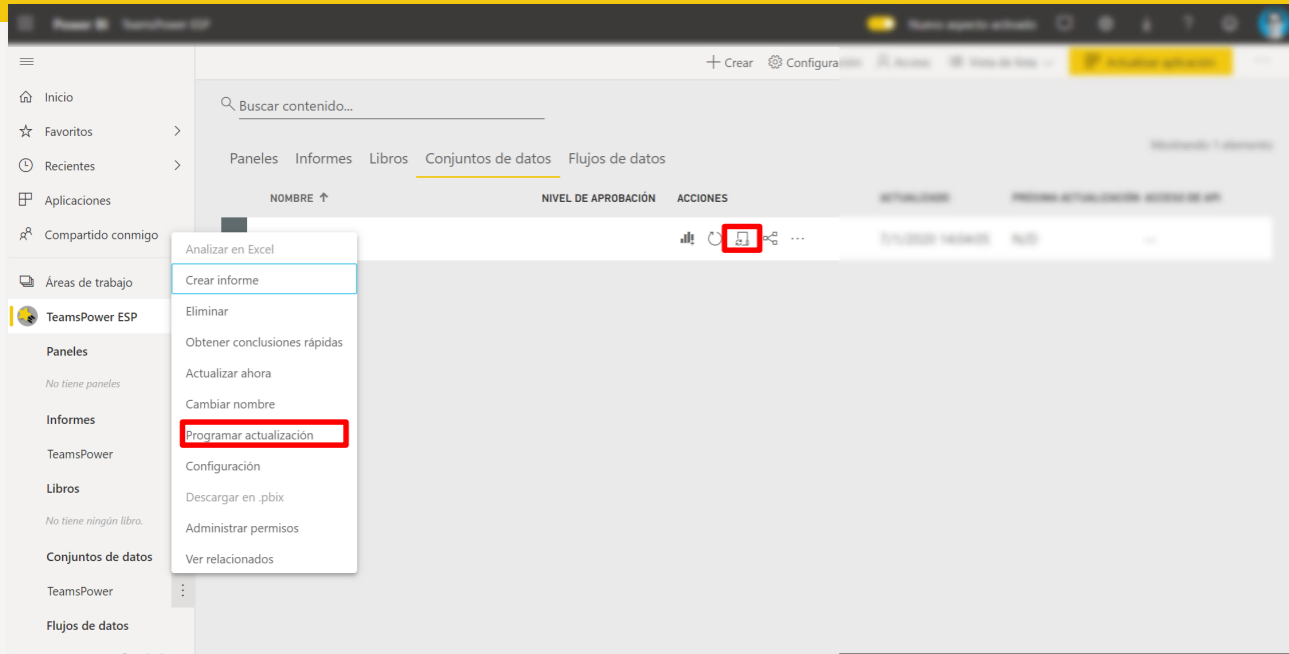
Learn more from Microsoft reports



Technical considerations (after installing TeamsPower)

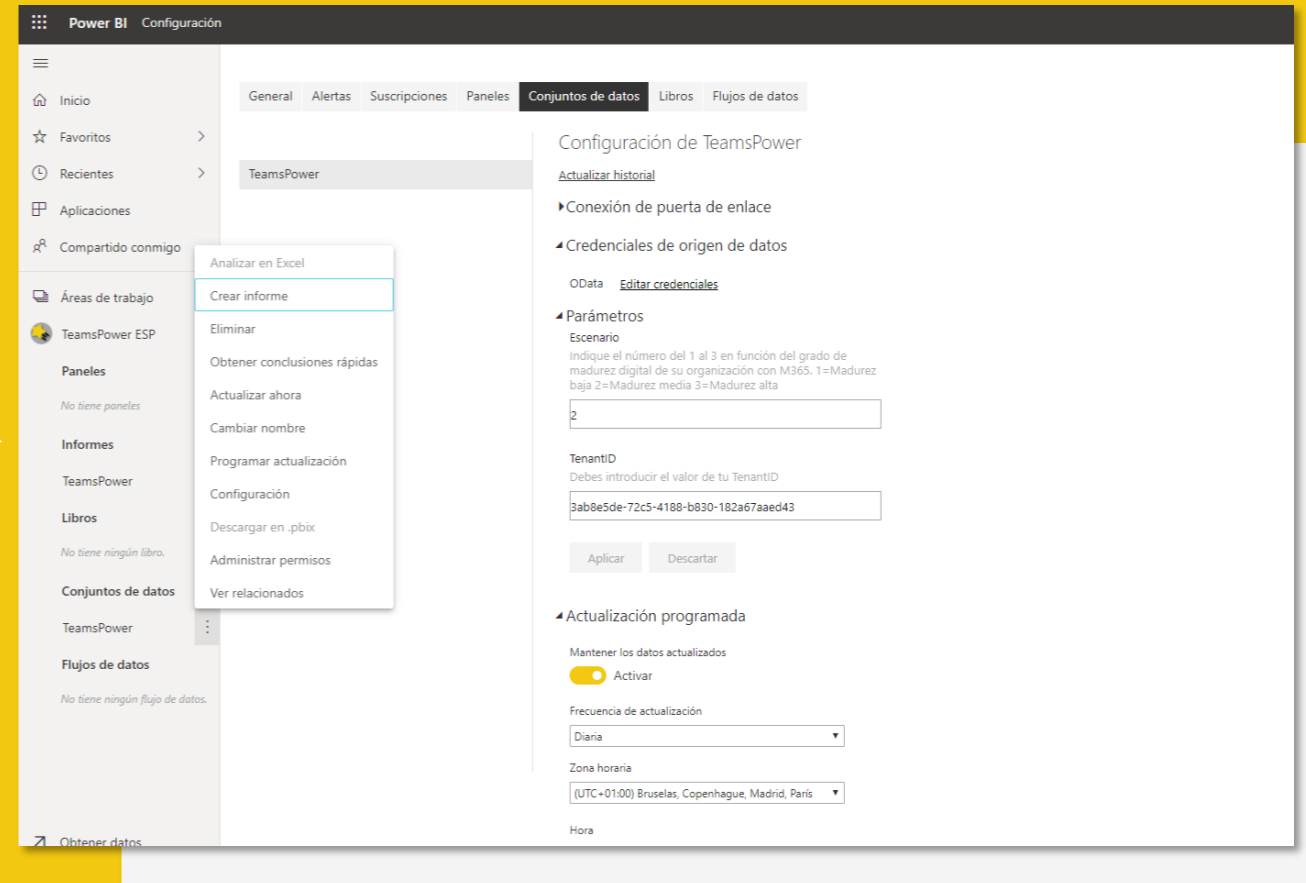
- To keep your data up to date, we need to set up automatic "[schedule refresh](#)" in TeamsPower. To do this we must do the following:
 1. TeamsPower will create a workspace when you install the app.
 2. In this workspace will be the TeamsPower dataset.
 3. From the dataset we will need to setup the "schedule refresh" to update the report with the desired frequency (daily/weekly)

Learn more about TeamsPower auto-scheduling



Technical considerations (update of credentials and scenario)

- Once we have the TeamsPower installed in our organization and we want to modify the scenario to apply (application thresholds) we must:
 - Navigate to the TeamsPower dataset, in the options part we select "settings"
 - Once in the workspace configuration, on the "dataset tab"
 - In the "Parameters" section, TeamsPower allows you to update the *scenario* and *TenantID* data
 - If we need to change the data source credentials, we select the "Data Source Credentials area" > edit credentials.
 - Depth level: Organizational
 - Autenticacion method: Oauth



Video to Enable Power Bi Usage Report

The screenshot displays the Microsoft 365 Admin Center interface for the 'Contoso' organization. The main heading is 'Finish setting up Office 365 E5'. Below this, a 3D-style graphic shows four steps: 'Personalize sign-in', 'Add users', 'Get apps', and 'Connect domain'. To the right, text instructs the user to 'Start by setting up your domain' and provides a 'Go to setup' button. The 'Essentials' section contains four cards: 'User management' (with 'Add user' and 'Edit user' buttons), 'Office 365 software' (with 'Install Office' button), 'Billing' (showing '\$0.00 Total balance' and 'Balance'/'Subscription' buttons), and 'Training & guides' (listing 'Training for admins', 'Customized setup guidance', and 'Training for users'). The bottom right corner features 'Need help?' and 'Give feedback' buttons.

Video installation

app.powerbi.com/groups/me/apps

Power BI Aplicaciones

Buscar contenido...

Inicio

Favoritos

Recientes

Aplicaciones

Compartido conmigo

Áreas de trabajo

Mi área de trabajo

Instalando la aplicación
Esto podría tardar un rato.

Todavía no tiene ninguna aplicación

Las aplicaciones son colecciones de paneles e informes en un único lugar fácil de encontrar.

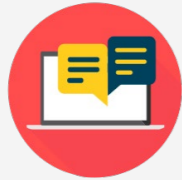
[Más información sobre las aplicaciones](#)

Obtener aplicaciones

Obtener datos

Thank you

To locate or contact ENCAMINA you may:



Send an email to:
info@encamina.com



Visit us at:
C/ O'Donnell, 34. 3ª planta
28009 , Madrid, Madrid

Jerónimo Roure, 49
46520 Puerto de Sagunto, Valencia

Calle del Ángel, 32
30202 Cartagena, Murcia

Av. Trinidad, 61. Campus Central ULL
38200, S.Cristóbal de La Laguna, Tenerife

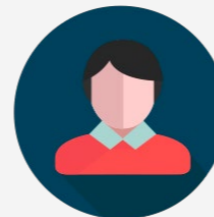


Call to :

Madrid - 917 893 823
Valencia - 962 698 064



Send a fax to 962 698 063



Or speak personally with your
Account Manager

You can find us at -



Or download our App - **MyENCAMINA**

