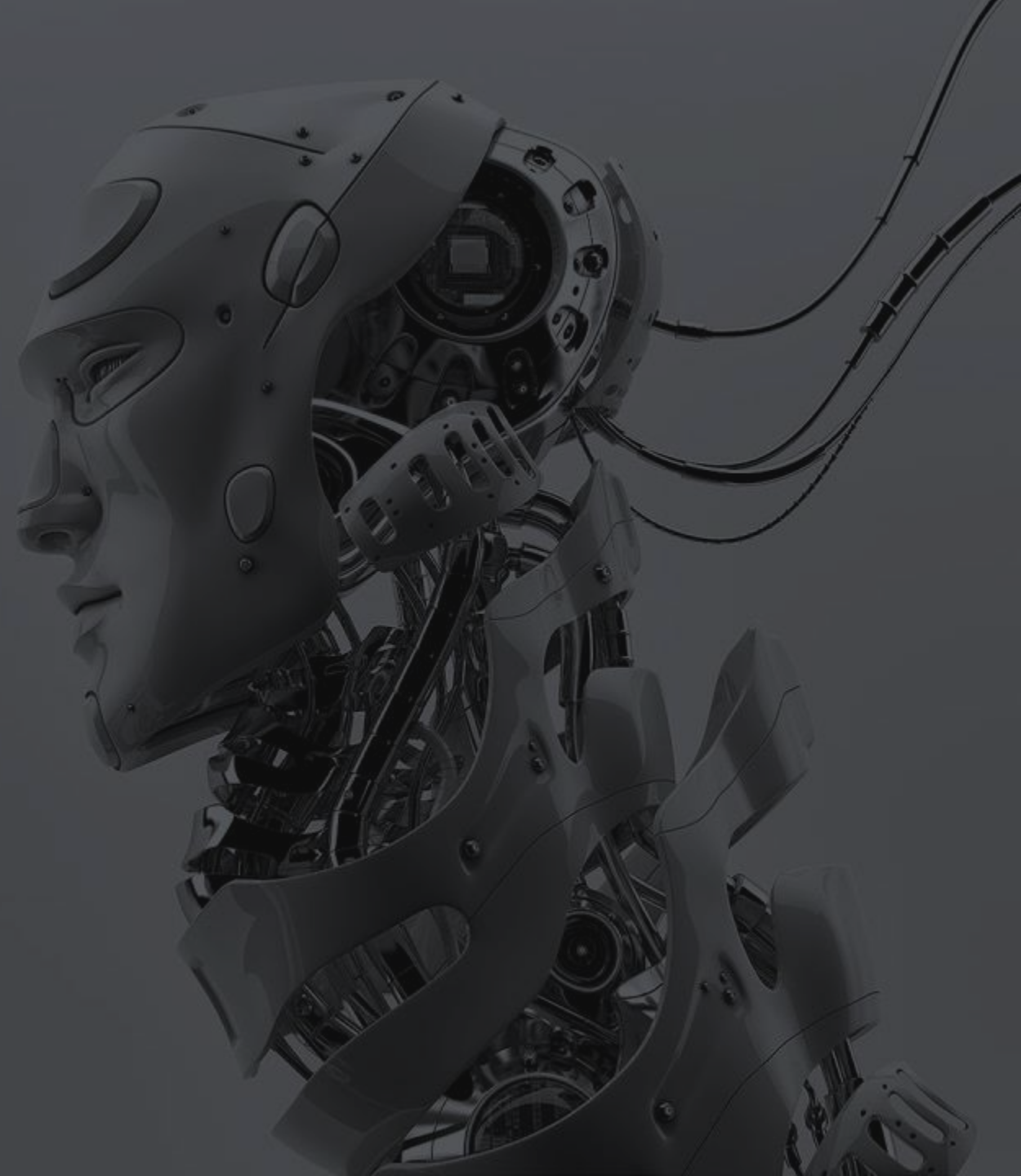




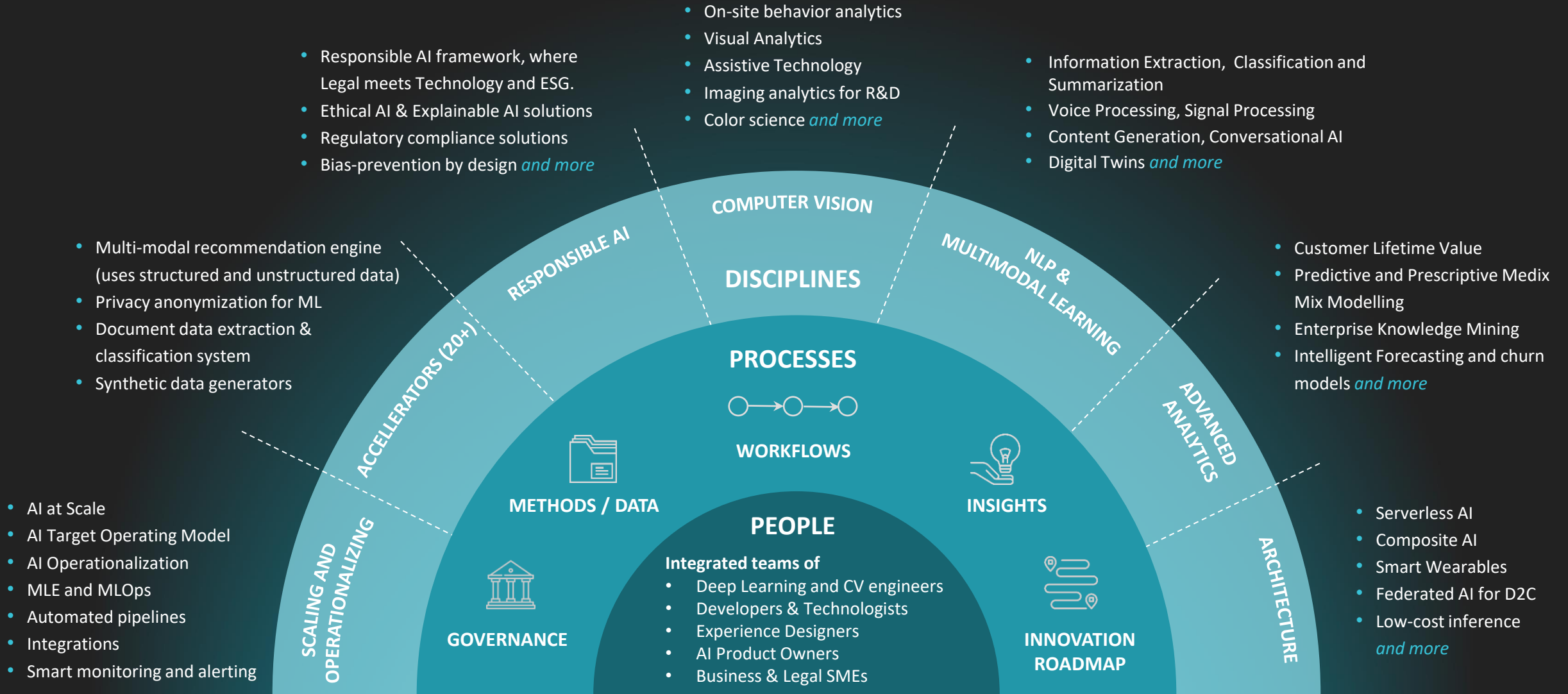
# EPAM DATA SCIENCE AND AI OVERVIEW

Azure Marketplace

2023



# EPAM Has Delivered Data Science and AI Products Across the Technology Spectrum



# Azure OpenAI | Top 5 Capabilities & Use Cases



## Content Generation

Automatically generate responses to customer inquiries

Generate personalised UI for your website

'Ghost Writer' for contracts, game dialogs etc.



## Summarization

Summary of customer support conversation logs

Subject Matter Expert Document Summarization (e.g. financial reporting, analyst articles, education)

Social Media Trends Summarization



## AI-Augmented Software Engineering

Convert Natural Language to SQL (or vice versa) for telemetry data

Convert Natural Language to Query Proprietary Data Models

Code Documentation



## Semantic Search

From keywords to Highly-personalized, natural language search

Search reviews for a specific product / service

Information Discovery and Knowledge Mining



## Conversational Analytics

Personalized chat-bot assistants in client context

Video and audio to text analytics and summarization

Hyper personalized assistants (e.g. healthcare)

## Examples of Multiple Model Use Cases

End to End Call Center Analytics: Classification, Sentiment, Entity Extraction, Summarization and Email Generation

Customer 360: Hyper-personalization using timely Summarization of customer queries & trends, Search, and Content Generation

Business Process Automation: Search through structured & unstructured documentation, Generate Code to query data models, Content Generation

# Design-Thinking Workshops

## Process:

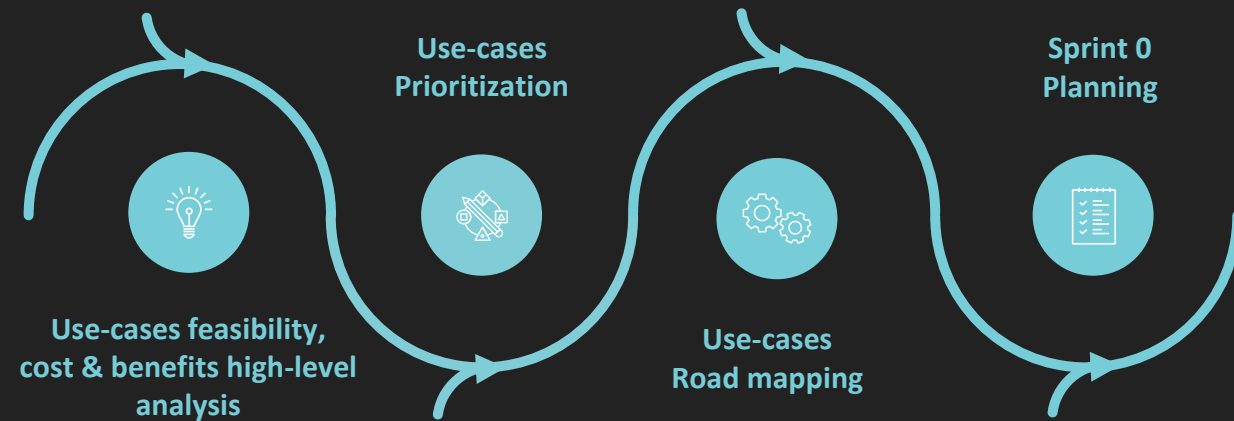
- Assemble **multi-disciplinary teams** to guide through use-case evaluation, prioritization, and road-mapping
- Bring **use-cases collected** across industries and perspectives
- Analyze Use-cases feasibility, cost/benefit high-level analysis
- Help **unlock creativity**
- Provide a **framework** to convert creativity into actions and measurable business value
- Plan Sprint 0

## Pre-requisites:

- EPAM: Industry POV
- Client, EPAM: Use-cases list
- EPAM: Prioritization framework
- EPAM: Detailed agenda

## Duration:

- 4 – 8 hours



## OpenAI | Offering Summary: Simple POC



### DELIVERY OUTCOMES

- **POC Demonstrating OpenAI capabilities** for selected use-case
- **Basic 'MLOps' Infrastructure, UI** to support demonstration of selected case
- **Next Steps** next steps to move to production with the use-case

**Duration:** 4-5 weeks



### TEAM

#### Cross-functional Teams:

- Delivery Manager
- Data Scientist
- Data Science Consultant
- User Experience Lead
- MLOps Engineer
- Data Engineer\*
- Data Labeling\*

*\*Maybe required*

Simple POC is for the cases which involve limited context, single data source and case which fits well to transformer architecture

#### Use Case Examples:

- On-the-fly translation
- Chat-bot based on embeddings
- Q&A based on KB section
- Flashcard generation

#### PREREQUISITES:

- **Client infrastructure** with (Azure) OpenAI licenses is available
- **Data is available** (client or public)
- **No Regulatory/compliance concerns** (addressed or not applicable)