



erp link

Bi3

ACCESS ACCESS
ANALYSIS ANALYSIS
RESTITUTION RESTITUTION
ACCESS ACCESS
ANALYSIS ANALYSIS
RESTITUTION RESTITUTION

INFORMATION FROM CORPORATE TO DETAIL
IN A SIMPLE CLICK !

INFORMATION FROM CORPORATE TO DETAIL
IN A SIMPLE CLICK !



- Monday morning : management meeting
 - Everyone comes with their own reports. How were the reports built ?
 - Everyone figures don't match between reports. What are the differences ?
 - Everyone claim having the correct data. Which are the correct data ?
 - How to avoid those conflicts ?

The answer is Bi3. but why ?



- Figures have an unique source in Bi3 without any "individual customization".
- Management can "verify" data correctness with Bi3.
- Reports are built from Bi3 measures and dimensions, no need to recalculate anything.
- Reports all match, no more discussion about "correct data".

Data are correct in all reports

Our customers have experimented it !



- In your company you have different user profiles:
 - User that has as 'only need' to consume the information and follow business indicators.
 - User that need to work on data and format some data
 - 'Hybrid' users' that is a mix of above profiles.

How to solve it ?



To answer different needs



Dashboards & (KPI)

Management

To follow company performance

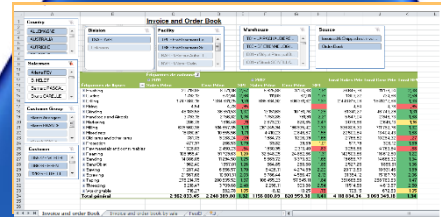
5-10%
of the users



Analysts

To measure the company activity

15-25%
Of the users



Navigate into data

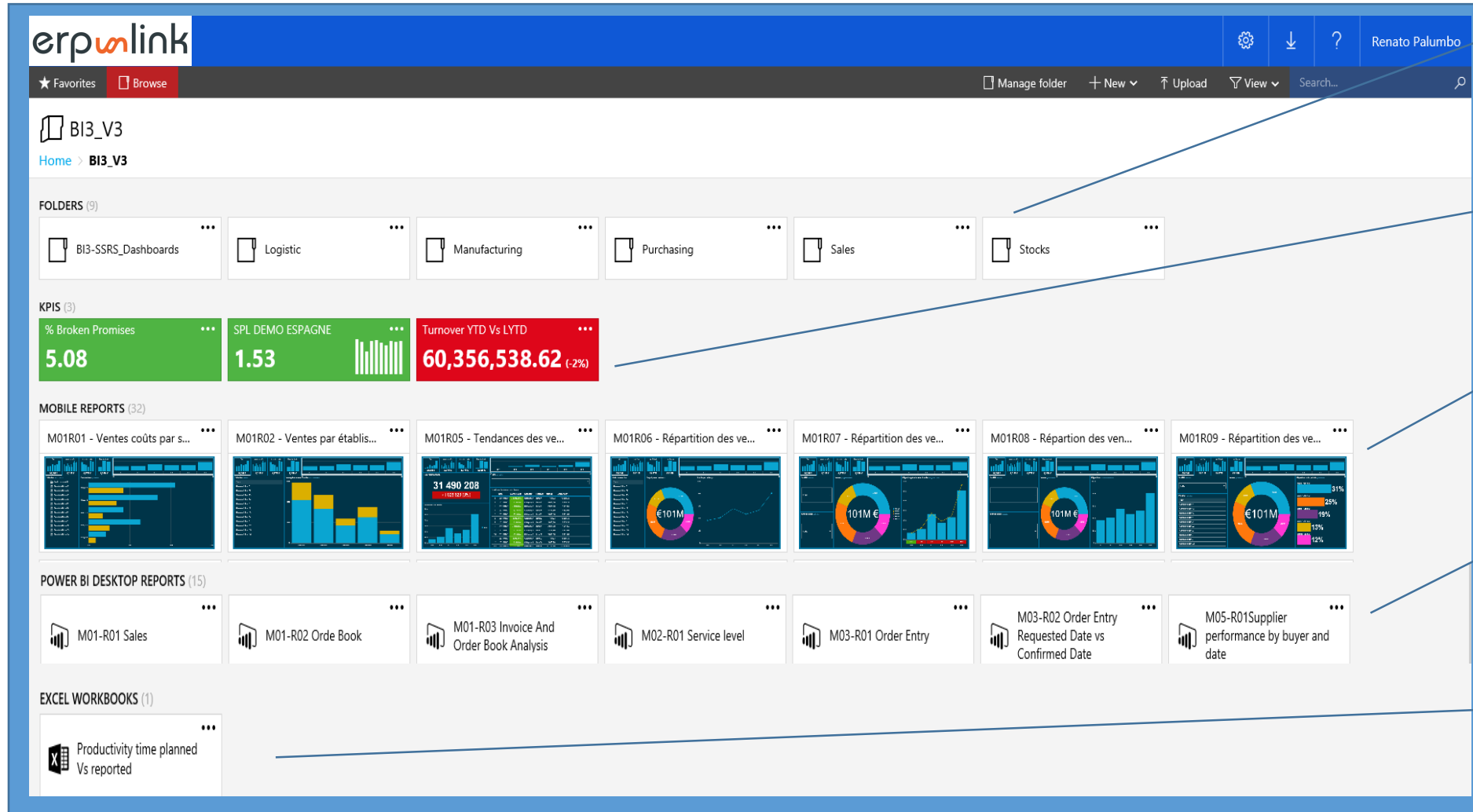
Collaborators

To analyse Operationnal results

65-80%
Of the users

Customer Group	Net STC	Sum of Sales	Sum of Cost Price	Margin	Margin STC (STC)
001 - Annoncé	0.86	18,430.79	17,813.89	-3,214.72	-2,336.18
002 - Adressette	0.69	7,089.73	10,031.83	-2,941.80	-2,941.80
003 - General industrial supplying Distributor	0.87	13,856.32	12,435.93	-1,087.71	-1,087.71
004 - Technical Trade Distributor	0.68	786.11	1,008.02	-255.07	-255.07
005 - Food hypermarket/Superstore	0.84	1,902.16	1,941.71	-39.55	-39.55
007 - Hypermarket/Superstore De 2 ^e Yearself	0.88	23,879.13	16,269.63	-1,591.59	-1,591.59
008 - Department and Retailer	0.81	11,489.86	13,209.85	-1,715.11	-1,715.11
009 - Free Farm Service	0.96	128.09	92.44	7.48	7.48
Total	0.84	96,385.23	96,023.11	-13,067.27	-13,076.72

Structured Reports



Bi3 Apps

KPI's indicators

Mobile dashboards

Cloud Dashboards

Shared folder

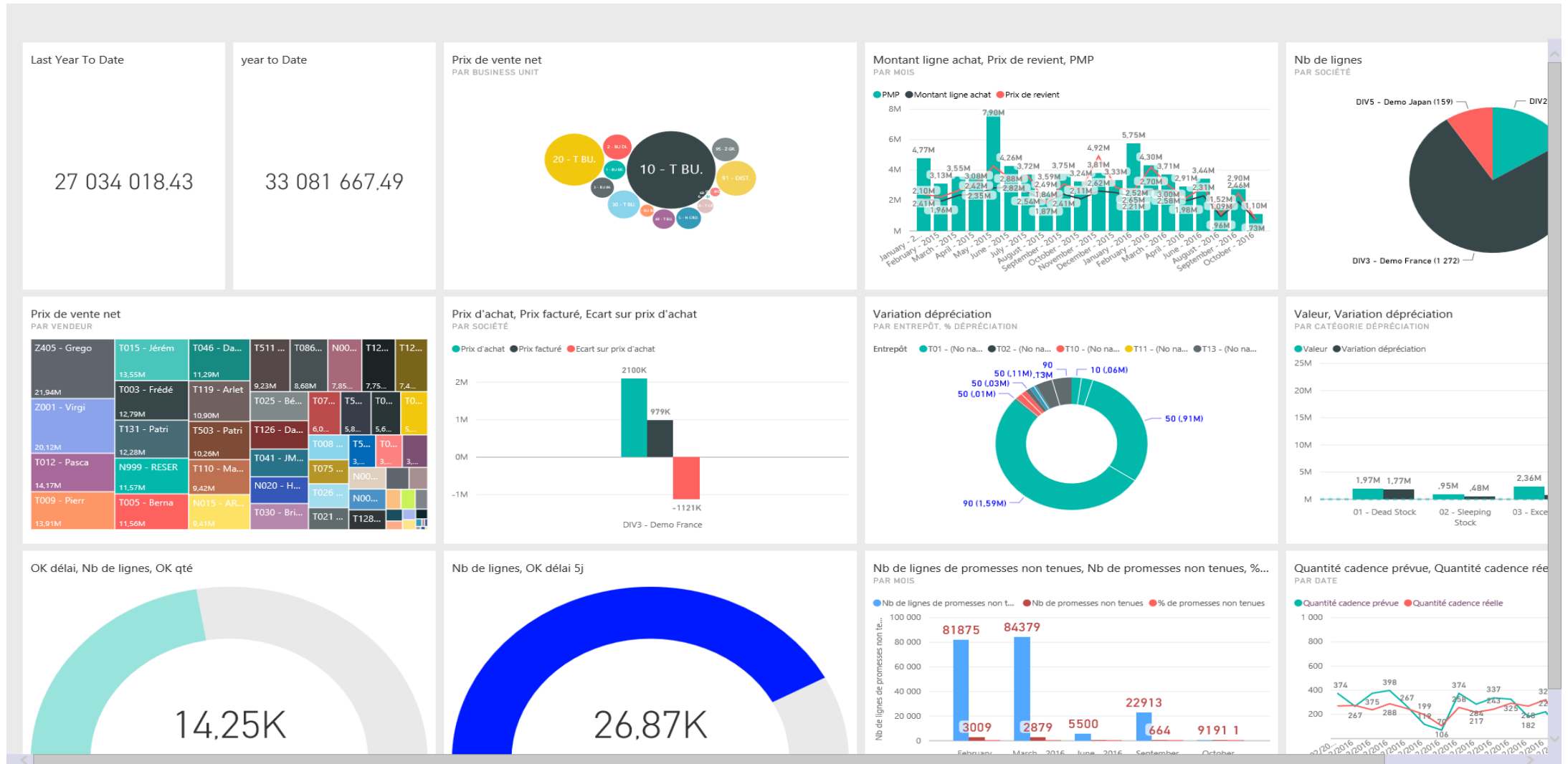
- * Only for Installation On Premises
- * Full portal available only with SQL server Enterprise edition.



Windows



Ipad





Windows



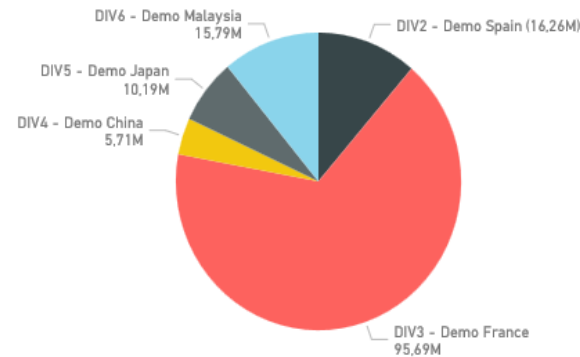
Ipad



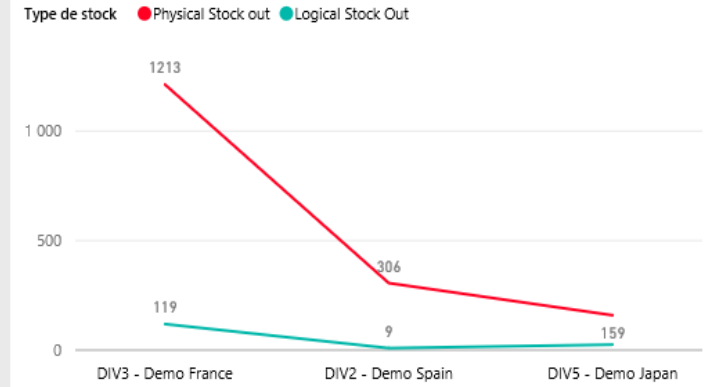
Prix de vente net
PAR SOCIÉTÉ, ANNÉE

Société	2015	2016	Total
DIV1 - Demo England		0,00	0,00
DIV2 - Demo Spain	30 643 972,17	18 128 436,75	48 772 408,92
DIV3 - Demo France	163 979 433,12	123 081 637,98	287 061 071,10
DIV4 - Demo China	15 462 108,32	1 679 672,42	17 141 780,74
DIV5 - Demo Japan	18 665 707,90	11 899 515,34	30 565 223,24
DIV6 - Demo Malaysia	30 236 484,07	17 122 966,27	47 359 450,34
Total	258 987 705,58	171 912 228,77	430 899 934,35

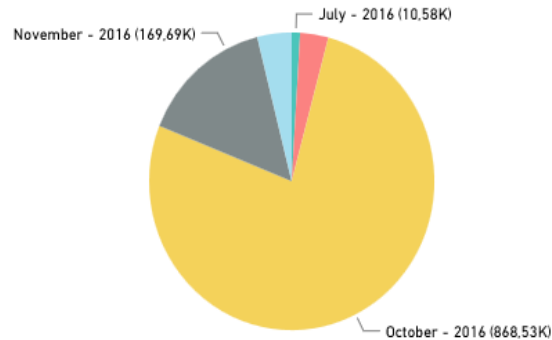
Prix de vente net
PAR SOCIÉTÉ



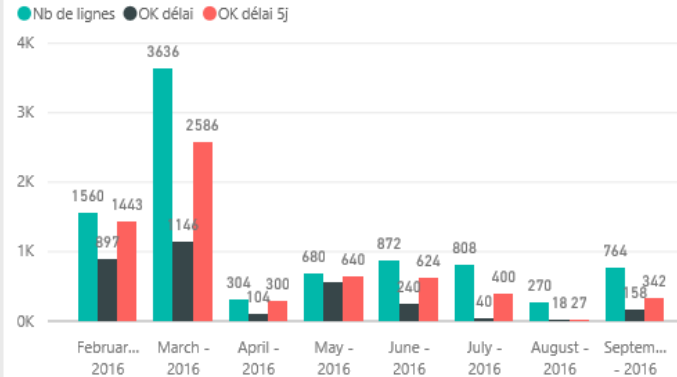
Nb d'articles
PAR SOCIÉTÉ, TYPE DE STOCK



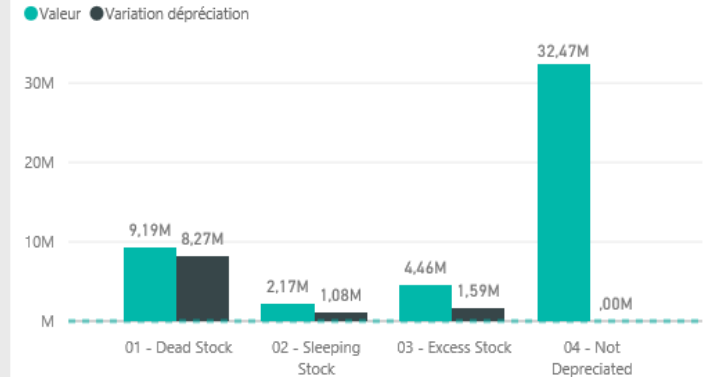
Prix de vente net
PAR MOIS



OK délai, OK délai 5j, Nb de lignes
PAR MOIS



Valeur, Variation dépréciation
PAR CATÉGORIE DÉPRÉCIATION





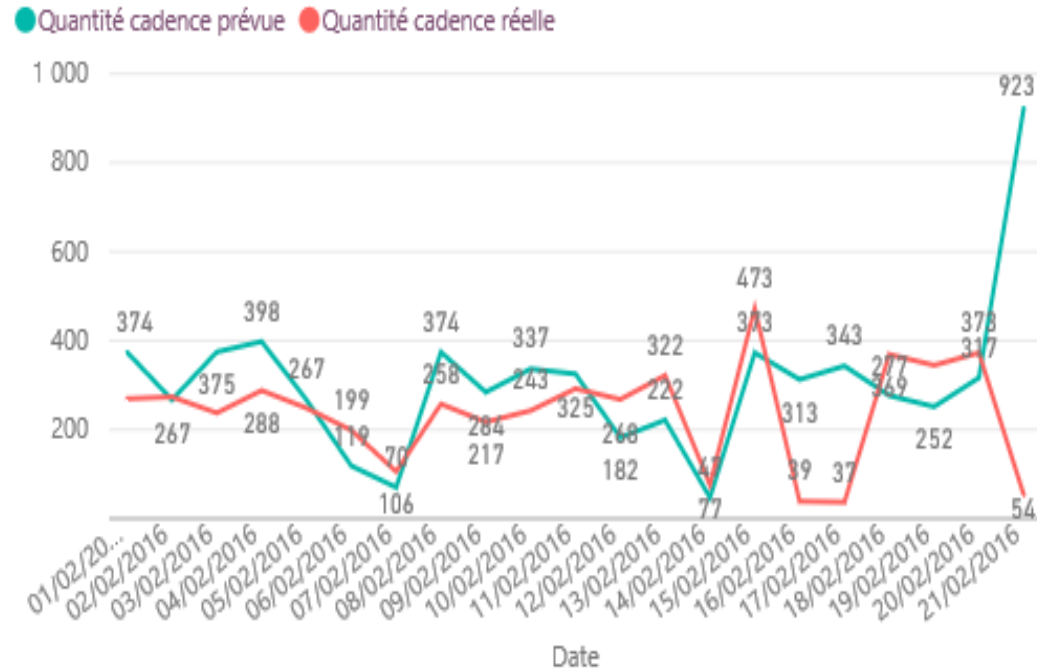
Windows



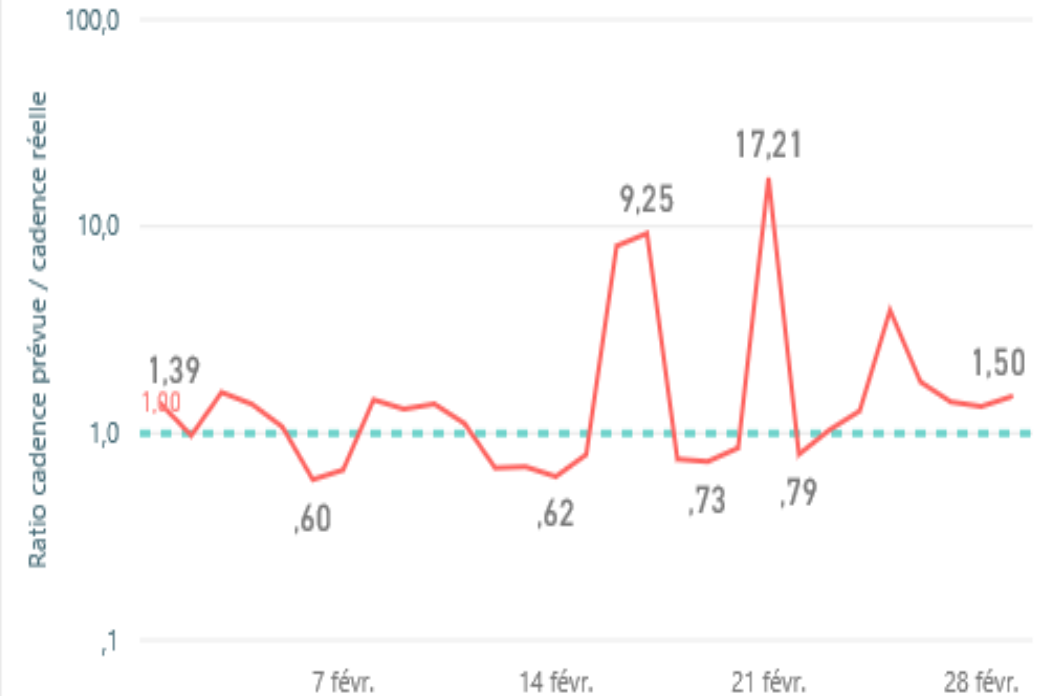
Ipad



Quantité cadence prévue, Quantité cadence réelle
PAR DATE



Ratio cadence prévue / cadence réelle
PAR IDDATE





Pivot tables are used almost without any Excel knowledge.

Improved response time because no need to read detailed data only cubes

Invoice and Order Book

Facility

- TPL - Etablissement La...
- TSE - Etablissement St...
- BAR - //Bar sur Aube [...]
- NVR - //Nant-Varin

Warehouse

- T01 - LA PACHAUDIERE...
- T02 - ST ETIENNE LOGI...
- B01 - //Dépot Principal B...
- C01 - //Stock SCINTILLA...

Source

- Invoiced & Shipped not invo...
- Order Book

2012

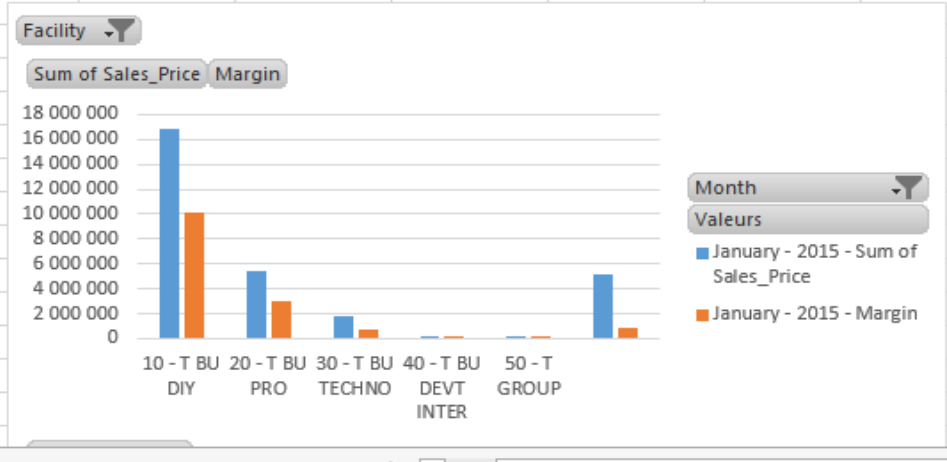
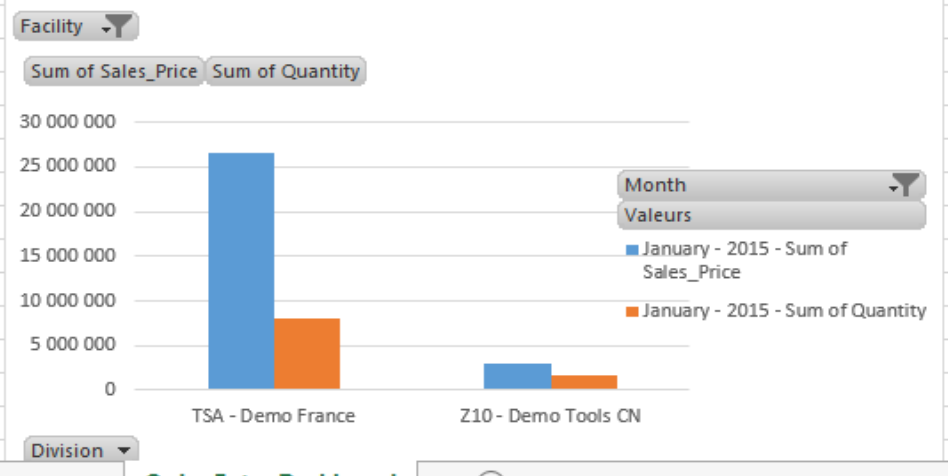
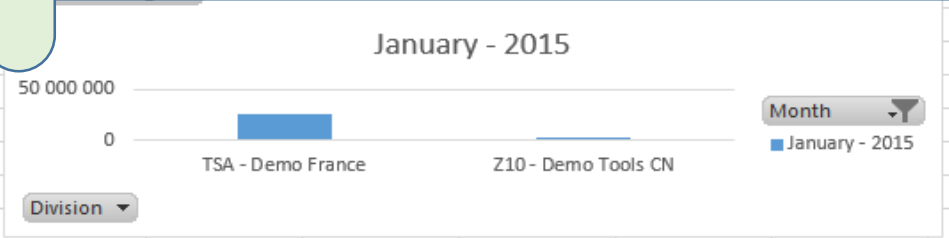
Price	Cost Price	SPL	Sales Price	Cost Price	SPL	Total Sales Price	Total Cost Price	Total SPL
20 719,88	8 071,36	2,57	5 925,88	3 104,68	1,91	26 645,76	11 176,04	2,38
1 792,13	672,64	2,66	111,09	62,01	1,79	1 903,22	734,66	2,59
1747 880,16	1334 831,25	1,31	695 934,92	506 381,62	1,37	2 443 815,08	1841212,88	1,33
4,54	4,78	,95				4,54	4,78	,95
48 189,58	36 551,53	1,32	13 151,69	10 191,76	1,29	61 341,27	46 743,29	1,31
3 793,19	2 156,82	1,76	1 753,85	791,91	2,21	5 547,04	2 948,73	1,88
206,76	1816,48	,11	2 873,20	828,65	3,47	3 079,96	2 645,13	1,16
675 560,36	514 857,35	1,31	261 245,94	196 935,42	1,33	936 806,30	711 792,76	1,32
18 090,61	10 555,56	1,71	4 410,23	2 848,87	1,55	22 500,84	13 404,43	1,68
781,79	9 088,24	,09	1 984,73	1 206,09	1,65	2 766,52	10 294,32	,27
477,97	266,53	1,79	39,82	39,59	1,01	517,79	306,12	1,69
1 328,03	2 450,23	,54	1 930,95	2 313,40	,83	3 258,98	4 763,64	,68
109 955,41	91 729,63	1,20	32 548,25	24 882,86	1,31	142 503,66	116 612,50	1,22
14 086,05	11 294,50	1,25	5 569,72	3 373,82	1,65	19 655,77	14 668,32	1,34
1 962,40	1 557,01	1,26	564,85	298,60	1,89	2 527,25	1 855,61	1,36
11 287,42	6 656,57	1,70	9 426,11	4 274,89	2,20	20 713,53	10 931,46	1,89
21 567,68	10 601,31	2,03	9 786,44	4 586,47	2,13	31 354,12	15 187,78	2,06
275 214,75	200 835,52	1,37	106 455,23	57 945,11	1,84	381 669,98	258 780,63	1,47
9 218,47	3 709,68	2,48	2 296,11	903,88	2,54	11 514,58	4 613,57	2,50
716,27	682,78	1,05	-8,12	-10,25	,79	708,15	672,53	1,05
2 962 833,45	2 248 389,80	1,32	1 156 000,89	820 959,38	1,41	4 118 834,34	3 069 349,18	1,34

Invoice and order Book | Invoice and order book by sale | Feuil3



Microsoft Excel interface showing the ribbon (FICHIER, ACCUEIL, INSERTION, DONNÉES, POWERPIVOT, AFFICHAGE) and a PivotTable. The PivotTable is filtered by Date (janv 2015) and Facility (NEL - Planta Spain, TPL - Etablissement Bo..., Z10 - Demo Tools China, Z30 - Demo Pack China, Z50 - Demo Trade China). The PivotTable shows data for TSA - Demo France and Z10 - Demo Tools CN.

Charts are built in the same way as if the data were extracted from the original source (ERP)





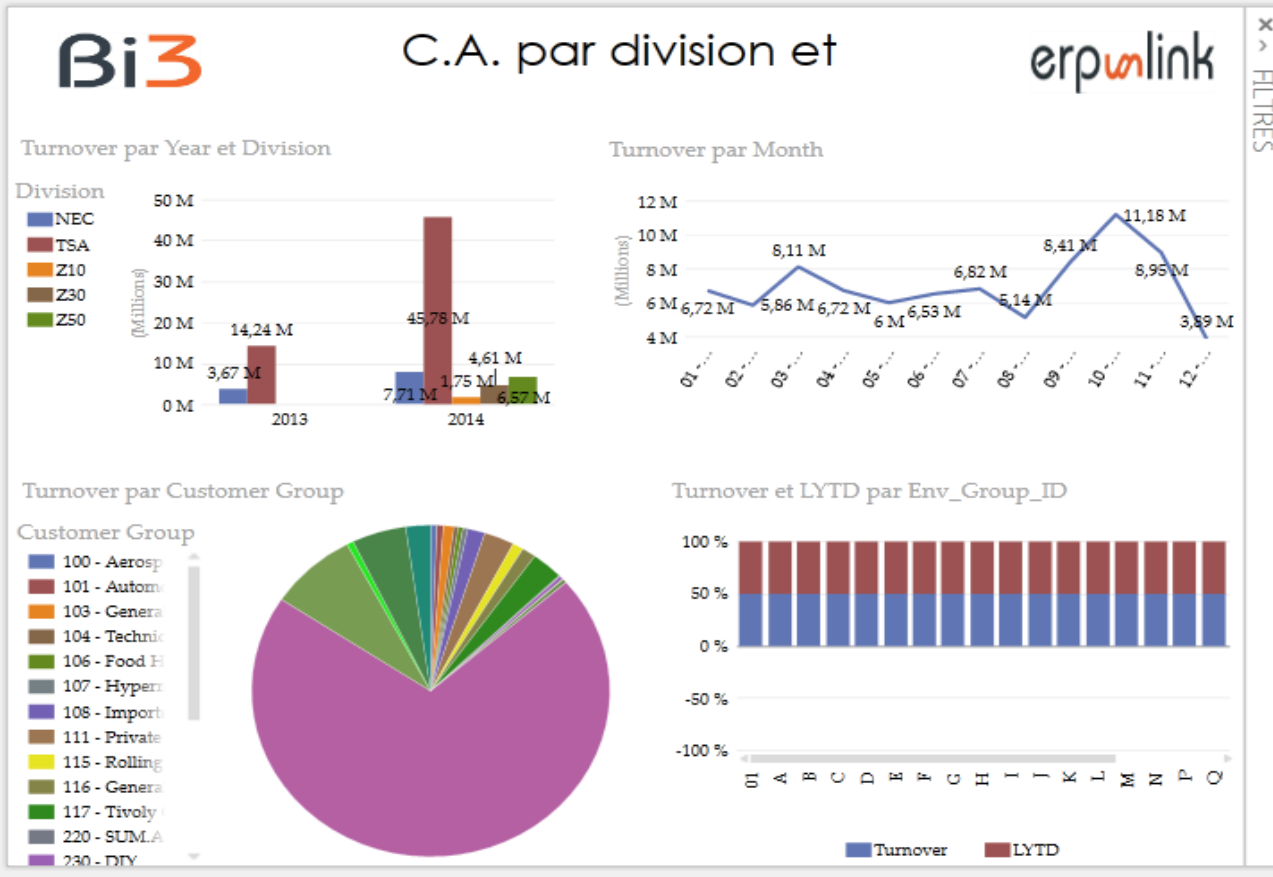
BIS - Demo Powerview - EXCEL

FICHIER ACCUEIL INSERTION MISE EN PAGE FORMULES DONNÉES RÉVISION AFFICHAGE POWER VIEW POWERPIVOT ERP LINK Demo

Coller Police Alignement Nombre Style Cellules Édition

Insérer Supprimer Format

Trier et Rechercher et filtrer sélectionner



Champs Power View

ACTIF TOUS

- Accounting Control Object
- Currency
- Customer
- D_IsMUC
- D_Origine
- Date
- Division
- Facility

Faites glisser les champs entre les zones ci-dessous

CHAMPS

Copyright erp-link Reproduction même partielle interdite sans autorisation Document confidentiel



Windows



Smartphone



Ipad



Smartphone



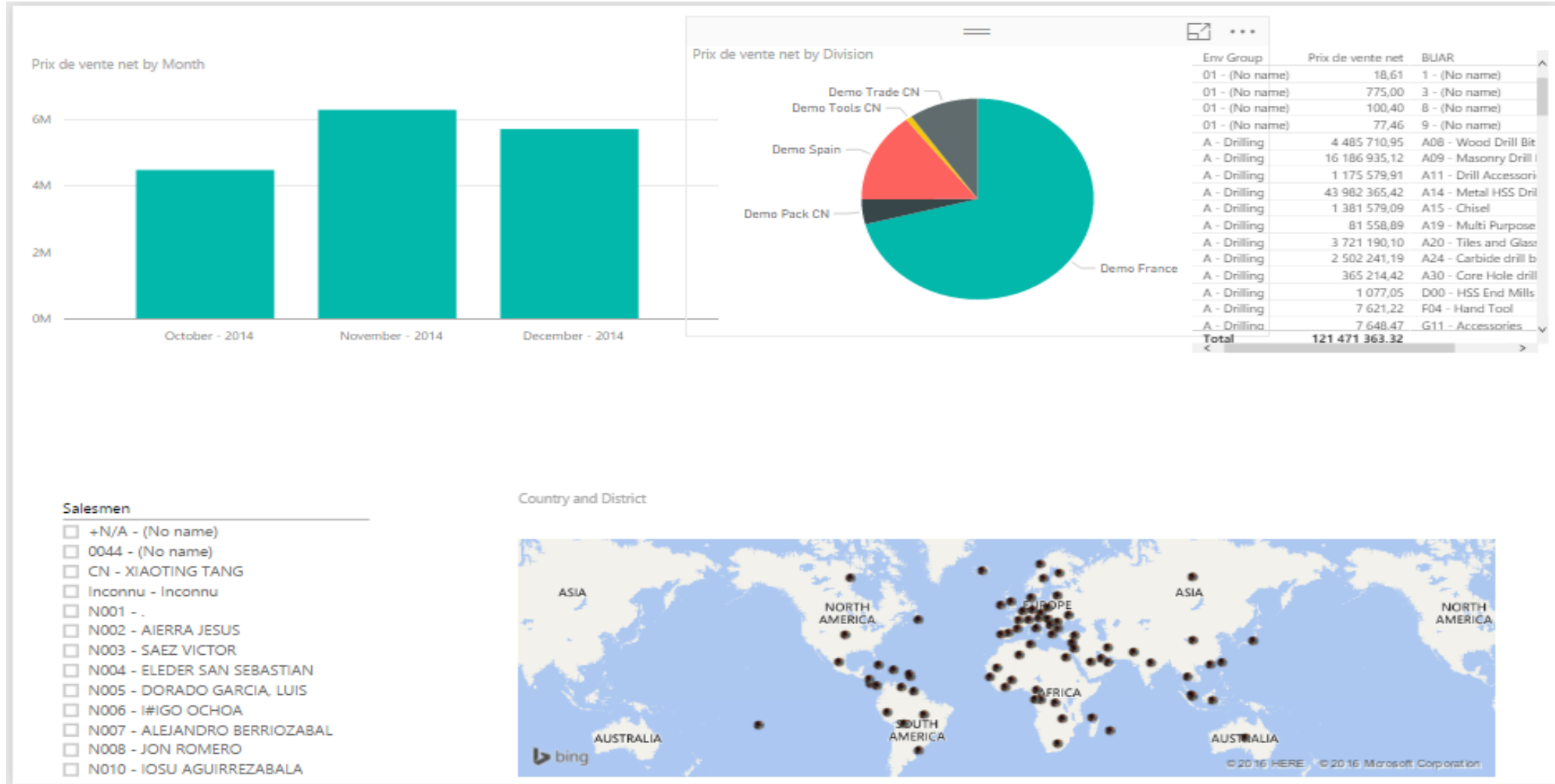
Windows



Ipad



Browser



Env Group	Prix de vente net	BUAR
01 - (No name)	18,61	1 - (No name)
01 - (No name)	775,00	3 - (No name)
01 - (No name)	100,40	8 - (No name)
01 - (No name)	77,46	9 - (No name)
A - Drilling	4 485 710,95	A08 - Wood Drill Bit
A - Drilling	16 186 935,12	A09 - Masonry Drill I
A - Drilling	1 175 579,91	A11 - Drill Accessori
A - Drilling	43 982 365,42	A14 - Metal HSS Dri
A - Drilling	1 381 579,09	A15 - Chisel
A - Drilling	81 558,89	A19 - Multi Purpose
A - Drilling	3 721 190,10	A20 - Tiles and Glasz
A - Drilling	2 502 241,19	A24 - Carbide drill b
A - Drilling	365 214,42	A30 - Core Hole drill
A - Drilling	1 077,05	D00 - HSS End Mills
A - Drilling	7 621,22	F04 - Hand Tool
A - Drilling	7 648,47	G11 - Accessories
Total	121 471 363,32	



Smartphone



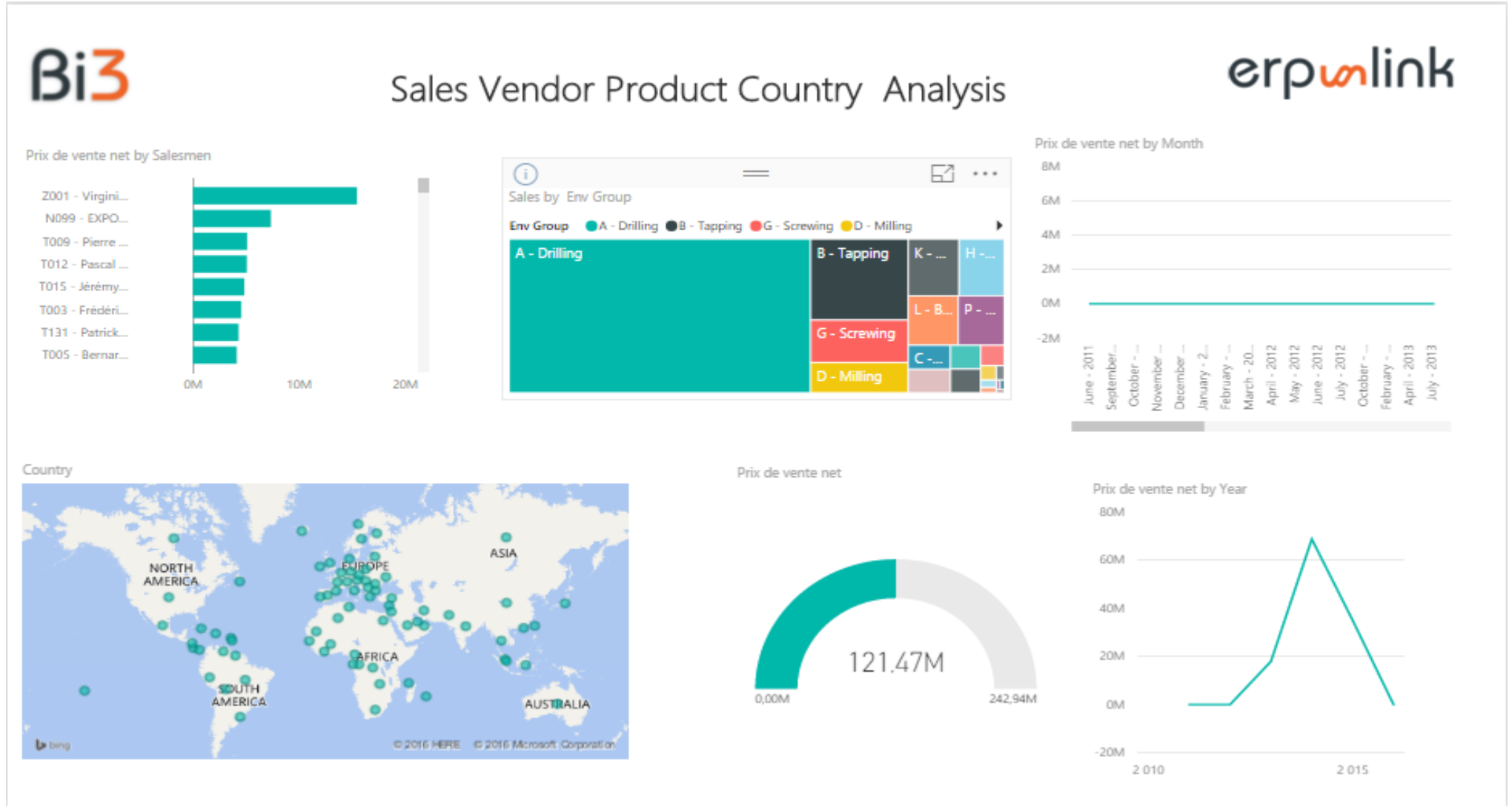
Windows



Ipad



Browser





- Azure Cloud
- Private Cloud
- Hybrid Cloud
- On Premise

Power BI 2.0 Architecture

