

# Azure Virtual Desktop Readiness Assessment



## Virtualization helps address specific business needs



### Security and regulation

Financial Services  
Healthcare  
Government

### Elastic workforce

Mergers and acquisition  
Short term employees  
Contractor and partner access

### Specific employees

BYOD and mobile  
Call centers  
Branch workers

### Specialized workloads

Design and engineering  
Legacy apps  
Software dev test

## High-level architecture

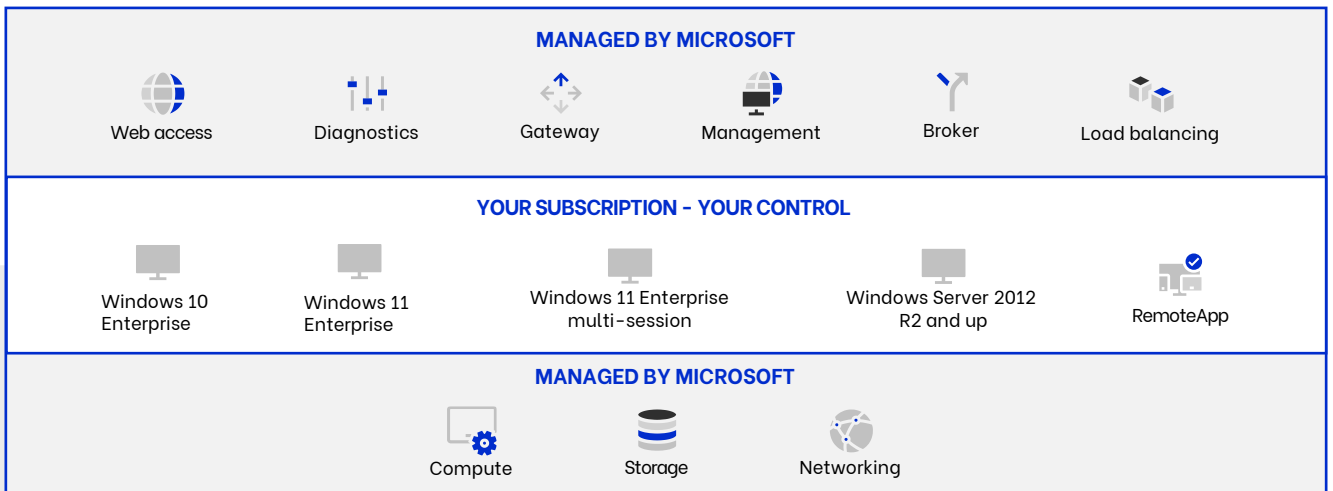
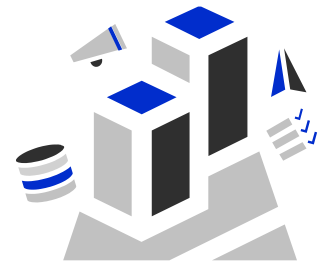
Utilizes Microsoft Entra ID identity management service.

Provides desktop as a service infrastructure.

Deploy and manage VMs in Azure subscription.

Manage using existing tools like Configuration Manager or Microsoft Intune.

Simplify connection to on-premise resources.



# Many customers are already eligible for Azure Virtual Desktop

## Azure Virtual Desktop Licensing Requirements



### Client

Customers are eligible to access Windows 11 Enterprise and multi-session and Windows 10 Enterprise with Azure Virtual Desktop if they have one of the following licenses\*:

- Microsoft 365 E3/E5, Business Premium
- Microsoft 365 A3/A5/Student Use Benefits
- Microsoft 365 F3
- Windows 11 Enterprise multi-session
- Windows 10 Enterprise multi-session
- Windows 10



### Server

Customers are eligible to access Server workloads with Azure Virtual Desktop if they have one of the following licenses:

- Windows Server 2022
- Windows Server 2019
- Windows Server 2016
- RDS CAL license with active Software Assurance (SA)

Customers pay for VMs, storage and networking used during service usage.

\*Customers can access Azure Virtual Desktop from their non-Windows Pro endpoints if they have a Microsoft 365 E3/E5/F1, Microsoft 365 A3/A5, or Windows 10 VDA per user license.

## Three ways to save when migrating Remote Desktop Services to Azure Virtual Desktop



### Infrastructure costs

- Scale infrastructure as needed.
- Pay only for what you use.
- Maximise VM efficiency with multi-session and reserved instances.



### Licensing costs

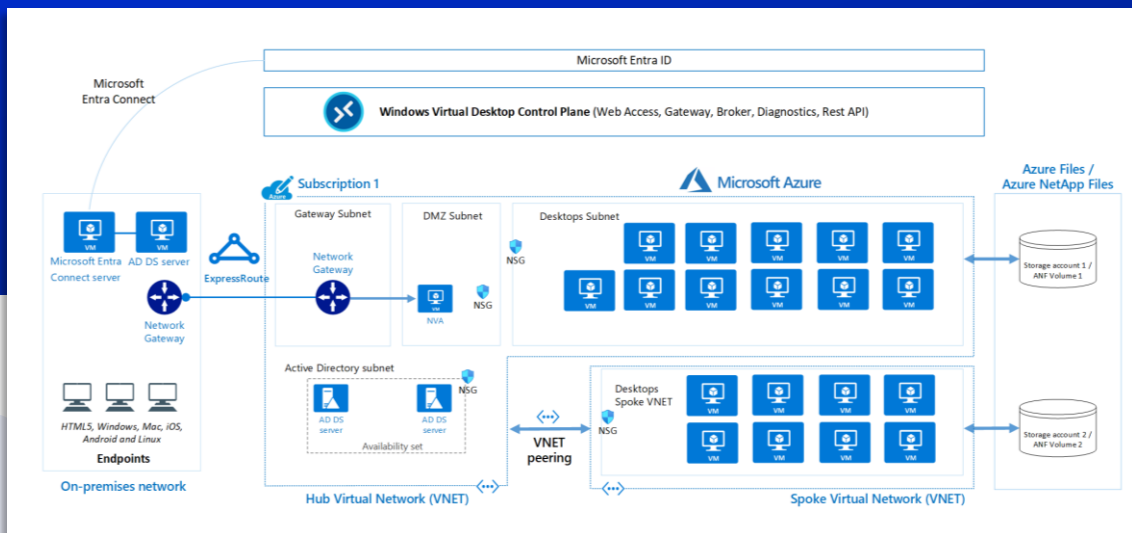
- Use existing eligible Windows or Microsoft 365 licenses.
- No RDS CAL required with multi-session.



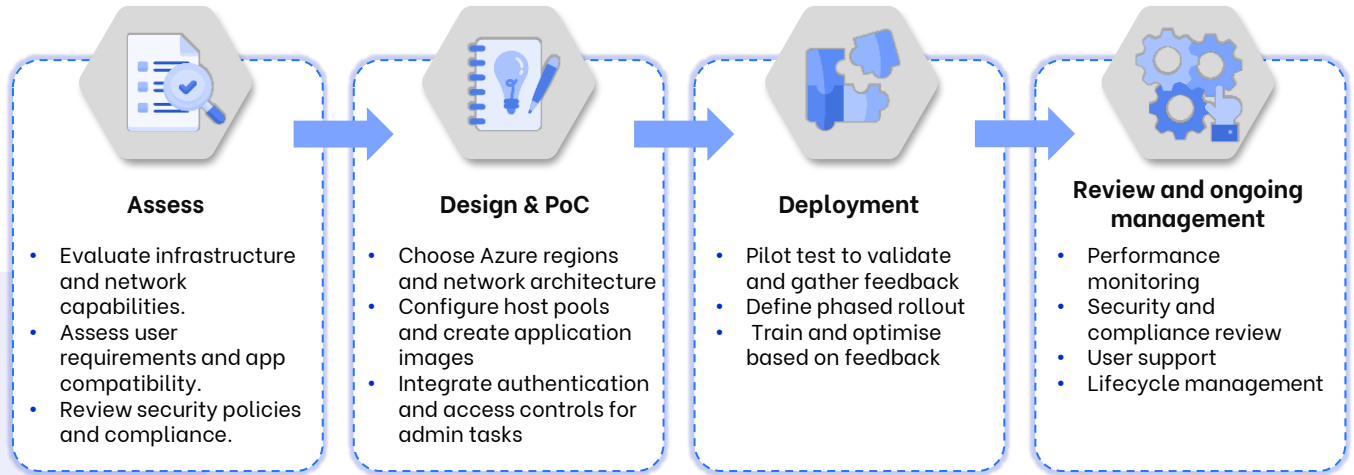
### Total cost of ownership

- No brokering, Gateway or Web Access required.
- Monitor performance and troubleshoot with logs and metrics
- Automate deployment.





## Sample Azure Virtual Desktop Architecture

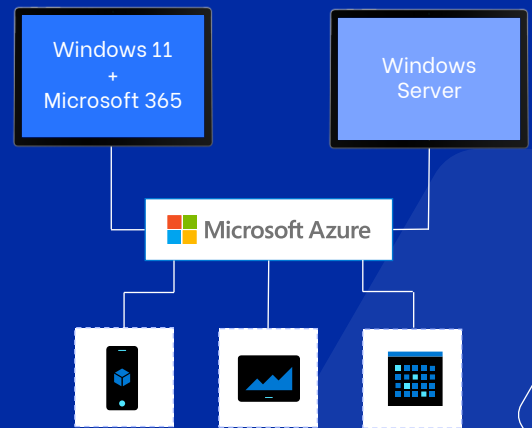


# Building a Secure, Cost-Efficient and Scalable Windows 10/11 Experience on Azure with Virtual Desktops



## Quickly deploy virtual desktops and apps to enable secure remote work.

-  Deliver the only multi-session Windows 10/11 experience.
-  Enable optimizations for Microsoft 365 apps for enterprise.
-  Migrate Windows Server (RDS) Citrix and VMware desktops and apps.
-  Deploy and scale in minutes.



## Why Customers use the Azure Virtual Desktop Readiness Assessment

This workshop is relevant if you:

- Are interested in **enabling remote work** knowing your employees can work securely from their personal device or when working remotely.
- Wanting to **increase security** by ensuring data is securely located in the cloud allowing the management of user permissions and access only to applications and data that is relevant.
- Want to **reduce costs** by turning infrastructure off when it's not being used; and at the same time, maximising the performance of the infrastructure.



SCAN THE QR CODE TODAY

*Boost productivity, streamline remote work, and accelerate digital transformation with Azure Virtual Desktop*

MANAGED SERVICES ● INFRASTRUCTURE ● NETWORKS ● CLOUD ● AUTOMATION ● SECURITY

CALL - 1300 EXIGOTECH (394 468)  
Connect Sales - [sales@exigotech.com.au](mailto:sales@exigotech.com.au)  
Find Us - [www.exigotech.co](http://www.exigotech.co)

**Be** ENABLED  
EMPOWERED  
TRANSFORMED

**EXIGOTECH**  
TECHNOLOGY MADE SIMPLE