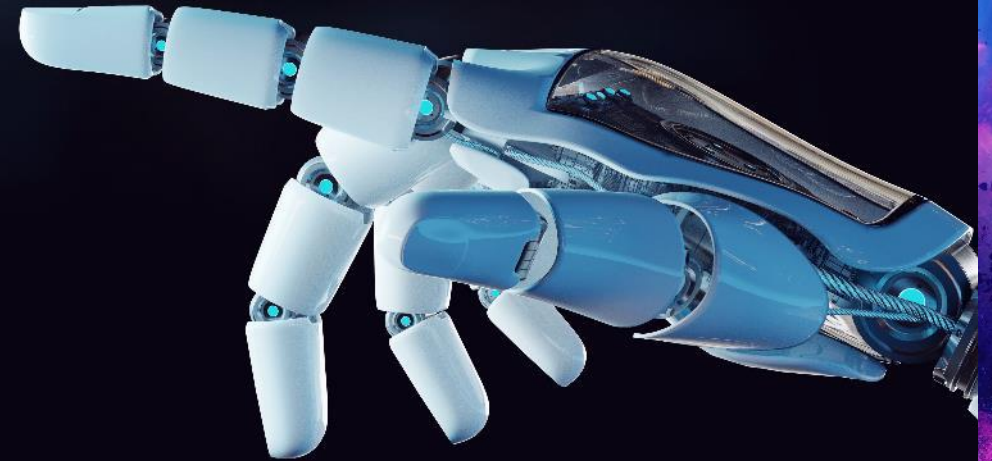


# A reliable partner for your bold ambitions

JULY 2022



( expleo )

Think bold, act reliable



## Value Proposition

- **Cost Reduction:** eliminate waste, maximum utilization of cheaper environments and licenses
- **Green:** driving carbon neutrality and energy efficiency
- **Control:** visualisation, measurement and consolidate of all spend and usage
- **Latest Technologies:** reap benefits from new technologies in speed, efficiency and improved customer experience

Success story

# Expleo Cloud Service Portfolio

bringing value to Global Enterprises



Microsoft Azure

Our complete cloud migration solution includes:

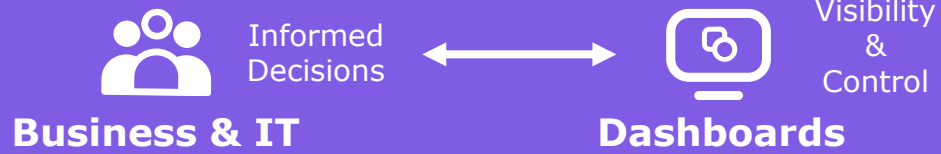
- Software architecture and code review to understand cost, benefits and technical challenges of cloud migration.
- IT asset analysis, resource optimisation, risk management, and cloud migration planning.
- Cloud migration including infrastructure, systems, tooling and software development.
- Value Stream Mapping: monitoring, controlling, and value improvements of the cloud migration balancing quality, risk, and cost.

Leveraging best of breed technology platforms from:



## Why Expleo?

Expleo delivers global Enterprise-wide programs leveraging our extensive partner network, our broad service portfolio, and with decades of experience across all key verticals.

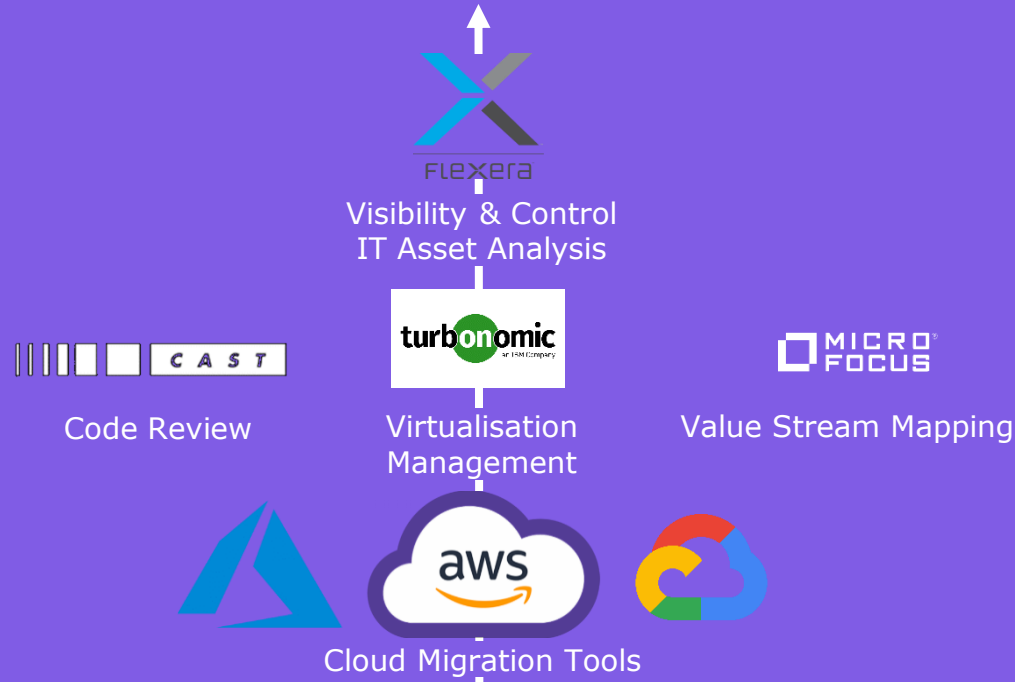


**Benefits**

- = Green IT
- < € & Energy
- > Control
- > Operations
- < CAPEX

**Strategy**

- = Elasticity of Resources
- < Time-to-Market
- < Waste
- > Process Improvements



**Visibility and Control**

**On-Premise**

- IT Assets
- Resources
- CAPEX & OPEX
- Code
- Processes & Policies

**Cloud Migration**

Costs  
 Risks  
 Challenges  
 Benefits  
 Value

**Cloud**

- IT Capacity Planning
- Process & IT Asset Efficiencies
- < Total Cost of Ownership
- > Automation
- Application Modernisation
- GDPR



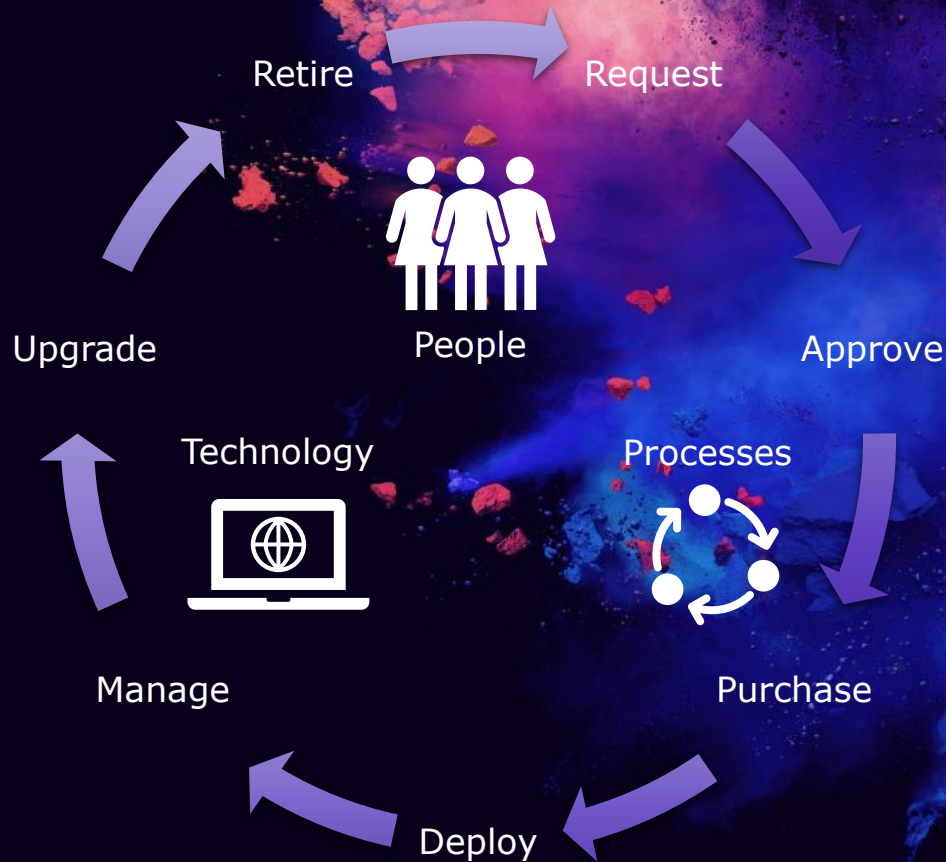
# FLEXERA ONE

**License Optimisation to Reduce Cost, Go Green, and Control IT Assets**

**IT Visibility:** align Business and IT enabling data-driven decision-making and optimise costs.

**IT Asset Management:** discover and control IT assets and manage risk for regulatory compliance.

**Cloud Migration Planning & Cost Optimisation:** Business and IT insights for migration and control of costs.



**Now let's make your  
journey a success.**

**( expleo )**

**Think bold, act reliable**

**[expleo.com](https://expleo.com)**