

# HCAS Hybrid Cloud Assessment Service



A Fujitsu assessment service based on NetApp Tooling

## Introduction

The Fujitsu **Hybrid Cloud Assessment Service (HCAS)** is a Fujitsu professional service designed to assist organizations in understanding their current infrastructure and data landscape to enable informed decisions about potential business risks, cost savings, optimal data placement, sustainability and dependency mapping.

Our service provides a comprehensive assessment of your IT environment, including:

1. **Visibility** of your infrastructure and data assets – both on-prem and in the cloud
2. **Analysis and optimization** of workload performance and resource utilization including **sustainability**
3. **Risk evaluation** on security, compliance and governance requirements
4. **Recommendations** on your hybrid cloud **transformation** journey

**HCAS** typically takes around **six weeks** to complete and provides a detailed overview of your data landscape that supports you taking informed decisions on your hybrid cloud strategy.

**HCAS** enables you to achieve a more efficient and effective hybrid cloud infrastructure by leveraging the benefits of public cloud, private cloud and on-premises datacenters, while minimizing the risks and costs associated with each.

With **HCAS** you can confidently navigate the complex world of hybrid cloud and make informed decisions about where to best place your workloads and data. All this while helping to achieve possible cost reductions and contributing to sustainability and carbon reduction targets.

To enable **HCAS**, two software packages from **NetApp (NetApp Data Infrastructure Insights (DII) and NetApp Data Sense)** will be used for gathering necessary data from the customer's environment (*see data gathering, deprovisioning and SaaS compliancy*).

This service is limited both in time and in the amount of scanned data. For a full engagement without limits please contact the **Professional Services team (PS)**.

## Service scope

Fujitsu provides the services described in this datasheet based on data gathering and analysis using **NetApp Data Infrastructure Insights** and **NetApp Data Sense**. Before starting **HCAS** the prerequisites from NetApp should be checked.

**HCAS** is executed by locally trained Fujitsu consultants. If local consultancy is unavailable additional costs may apply (*see travel expenses*).

**HCAS** involves installation and configuration onsite, where necessary rights are needed for data gathering. Also, SaaS services from NetApp are involved to gather and analyze the gathered data (*see data gathering, deprovisioning and SaaS compliancy*).

**HCAS** provides a comprehensive assessment of your organization's infrastructure and data landscape to enable informed decisions helping you to take the right decisions on your hybrid cloud strategy. Our service includes five steps (*see service in detail*).

At the end of HCAS the installed environment and data gathered will be removed (*see data gathering, deprovisioning and SaaS compliancy*).

## Order code

Fujitsu Hybrid Cloud Assessment Service supported by NetApp Data Infrastructure Insights and Cloud Data Sense

**FSP:G-PA10600PRDDS**

*(Hybrid Cloud Assessment Service (HCAS))*



## Service detail

Our service includes the following steps



### Stage 1 Customer discussion

- Access
- Permissions
- Agree timelines

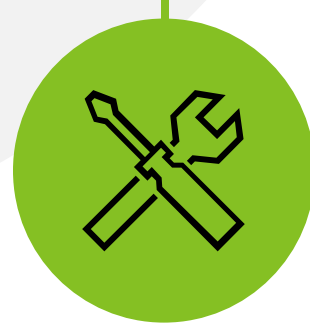


### Stage 3 Extract data

- Discuss licensing to retain capabilities



### Stage 5 Report creation



### Stage 2 Tooling deployment

- Installation
- Set-up reporting and data capture



### Stage 4 Data analysis

- Review findings identify areas for remediation and improvement
- Highlight threats and vulnerabilities



### Final Stage

- Present report
- Review findings
- Discuss recommendations
- Agree actions for remediation and improvement

**1. Software tool installation** – we install **NetApp Data Infrastructure Insights** and **NetApp Data Sense**, which enable us to capture and analyze data across your entire IT estate.

**2. Data collection** – we capture a global view of your heterogeneous estate, including capacity management, wasted resources, ransomware risk, sustainability, data access, data modification, stale data, non-business data, sensitive data, access permissions and duplicate files.

**3. Data analysis** – we analyze the data collected to identify areas of improvement, cost savings, and risk reduction in your hybrid cloud environment.

**4. Report creation** – we compile the analysis results into a comprehensive report that includes recommendations for optimizing your hybrid cloud strategy.

**5. Results discussion** – we present the final report to you and discuss the results, providing insights into how you can best leverage public cloud, private cloud and on-premises datacenters to achieve a more efficient and effective IT infrastructure.

## NetApp DII

**Infrastructure layer** – build a comprehensive view of existing storage, compute and network environment for both on-prem and cloud-based assets:

- Highlight bottlenecks and problems
- Show possible vulnerabilities
- Highlight underutilized assets or unused assets
- Assist carbon footprint reduction
- Show potential areas for immediate and longer-term cost reductions
- Pre-migration planning ahead of datacenter or cloud move
- Optimize VMs by performance profiles
- Intelligent resource allocation
- Consolidation of assets
- [DII data collector list](#)

## NetApp Data Sense

**Data layer** – build a comprehensive view of data environment

- Vendor agnostic
- On-premises and cloud (multi-cloud)
- Structured and unstructured data
- File shares and object storage
- Compliance data classification view
- Sensitive data and permissions view
- Data source visibility
- Age and access patterns
- Expose Redundant, Obsolete and Trivial (ROT) data for storage capacity reduction

## Final report

- Overview of customer and challenges
- Governance, security and compliance concerns
- IT environment and pain points
- High level summary
- Key findings
- Potential remediation actions
- Value delivered across
- Cost reduction
- Right sizing
- Risk reduction
- Sustainability analysis

## Service timeline

**HCAS** typically takes around six weeks to complete and provides a detailed overview of your IT landscape that can help you make informed decisions about your Hybrid Cloud strategy (*see also data gathering, deprovisioning and SaaS compliancy*).

## Service time

**HCAS** is carried out by Fujitsu Professional Service Engineers at the agreed date during local business hours (standard service time) that may vary between countries.

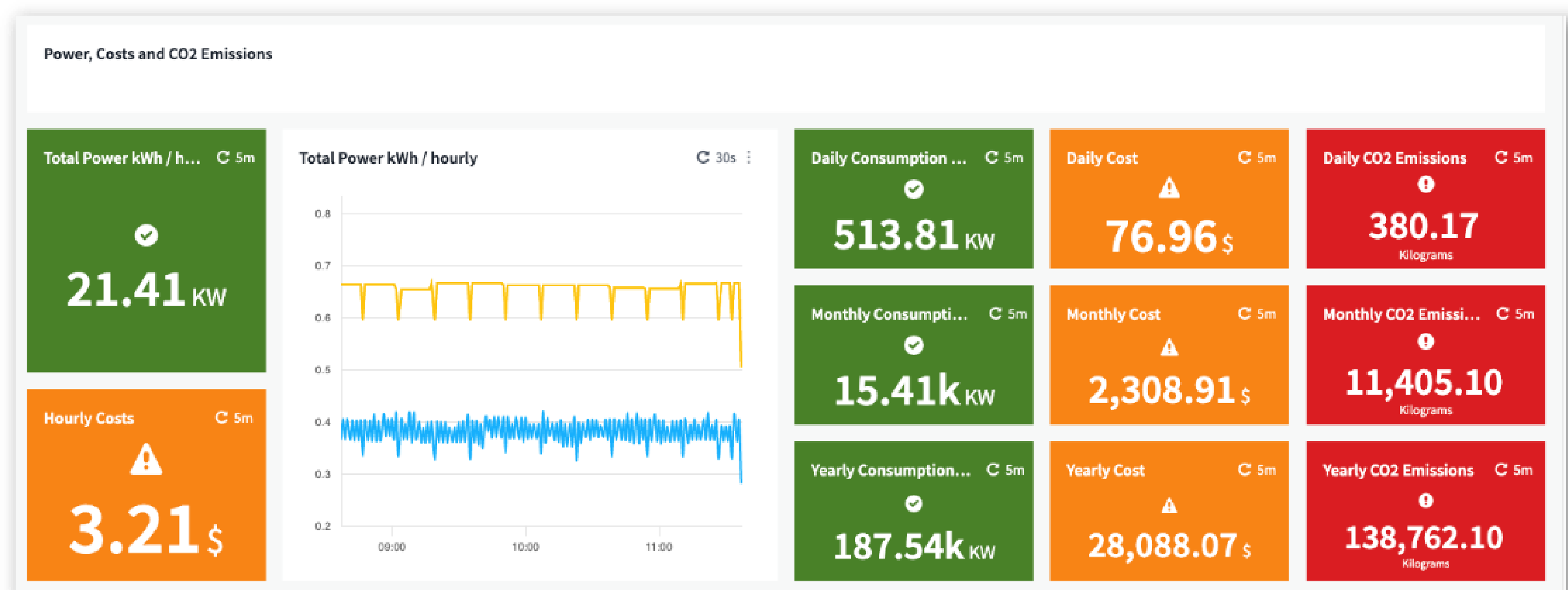
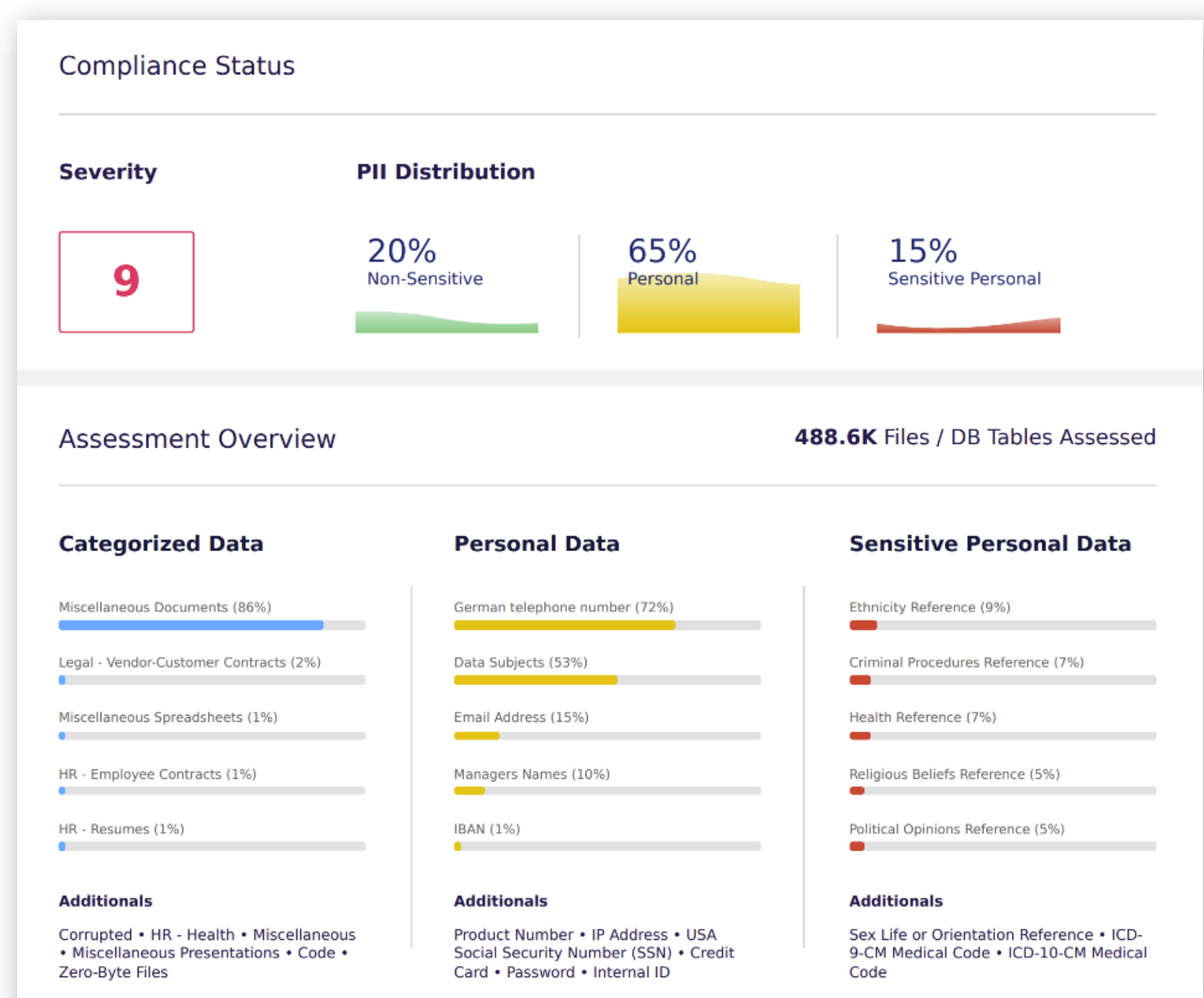
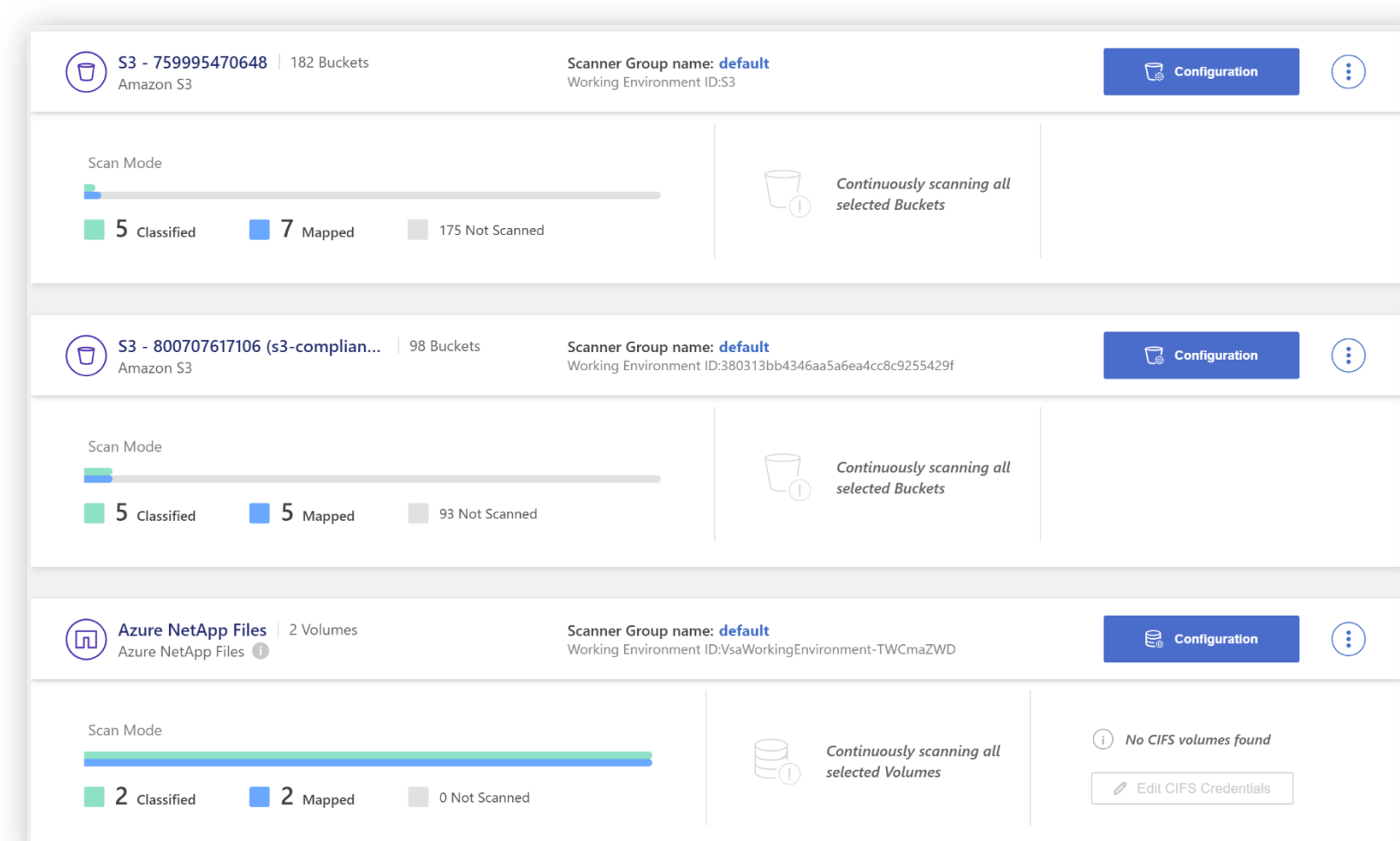
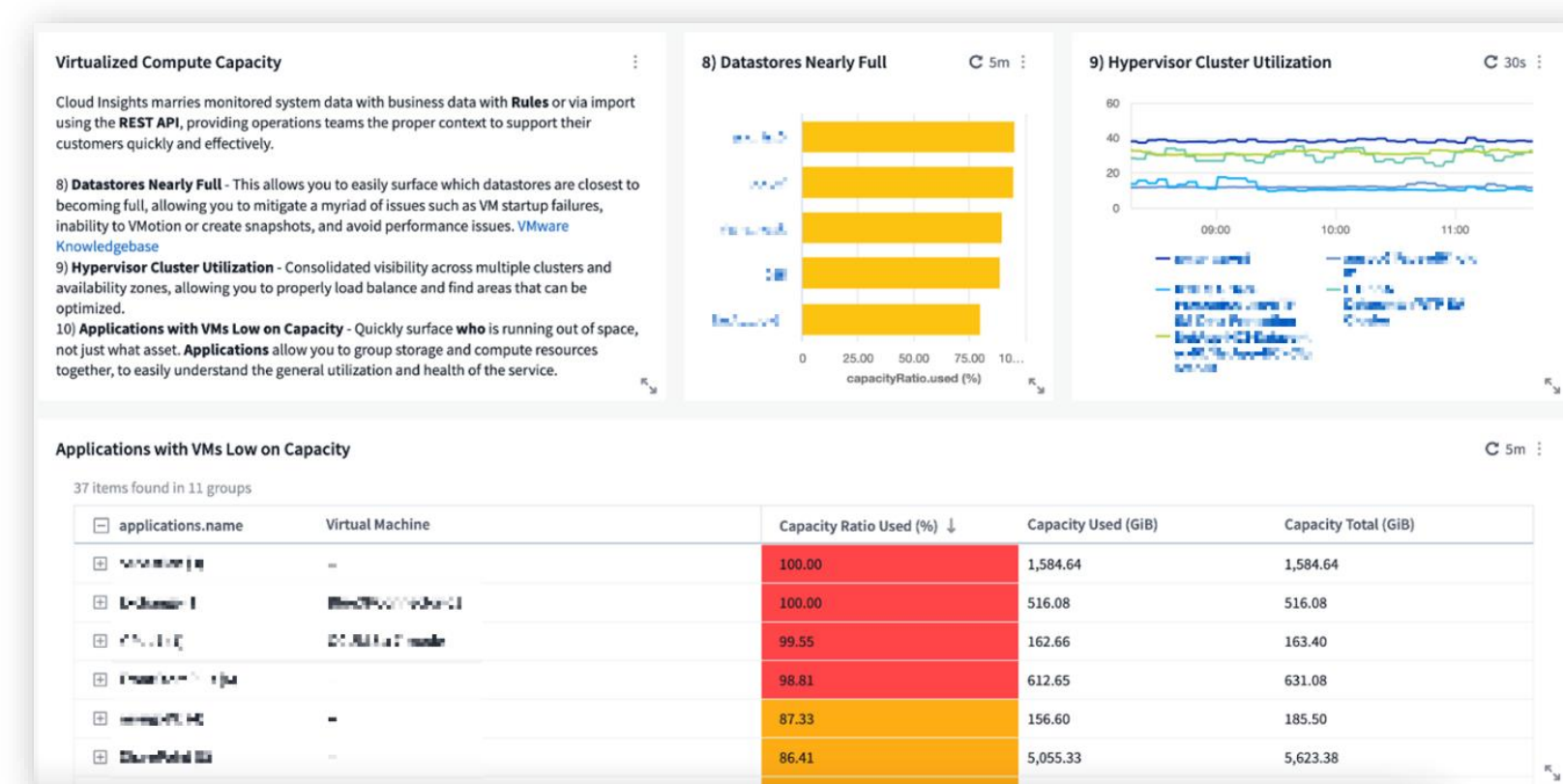
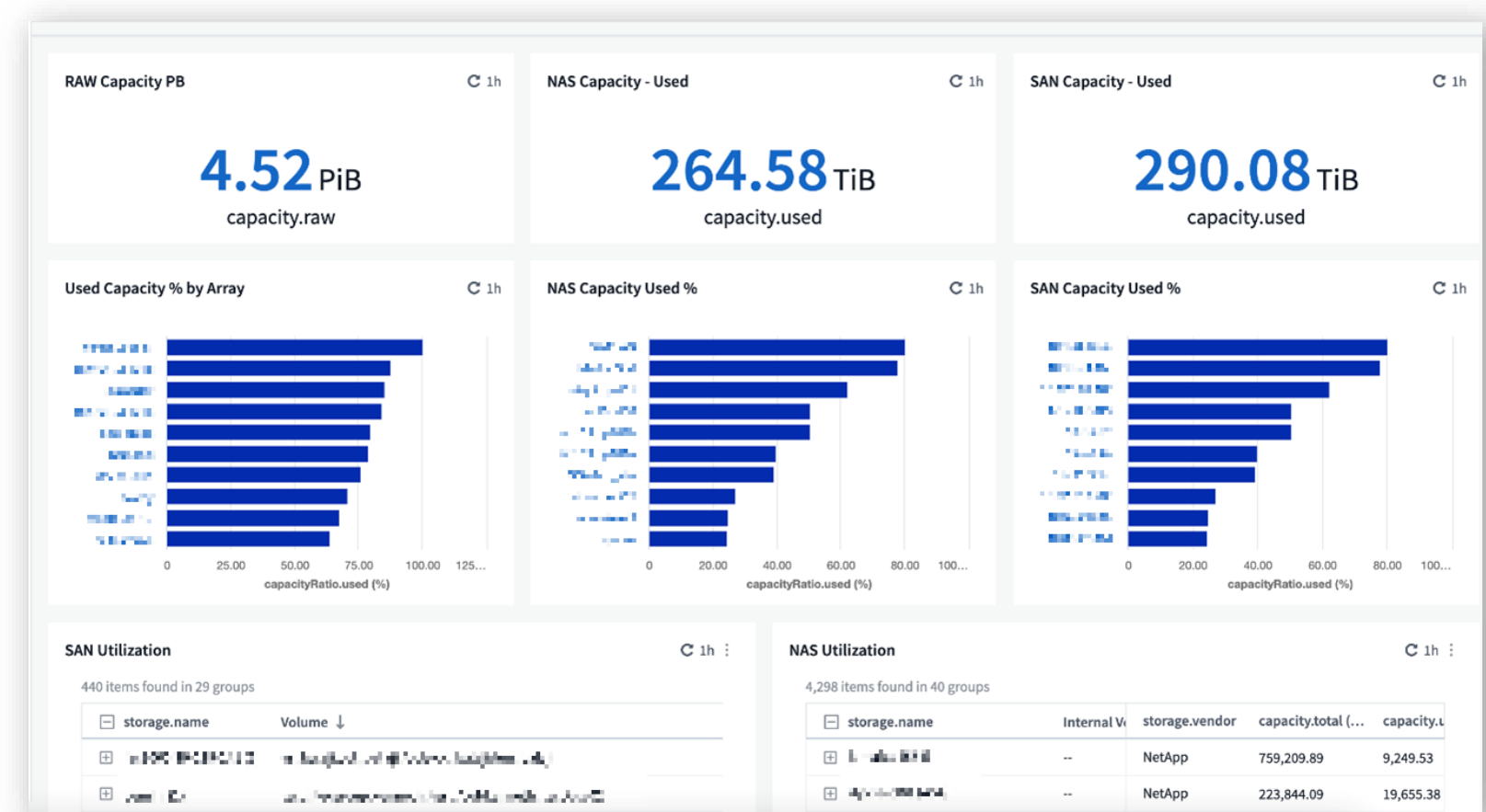
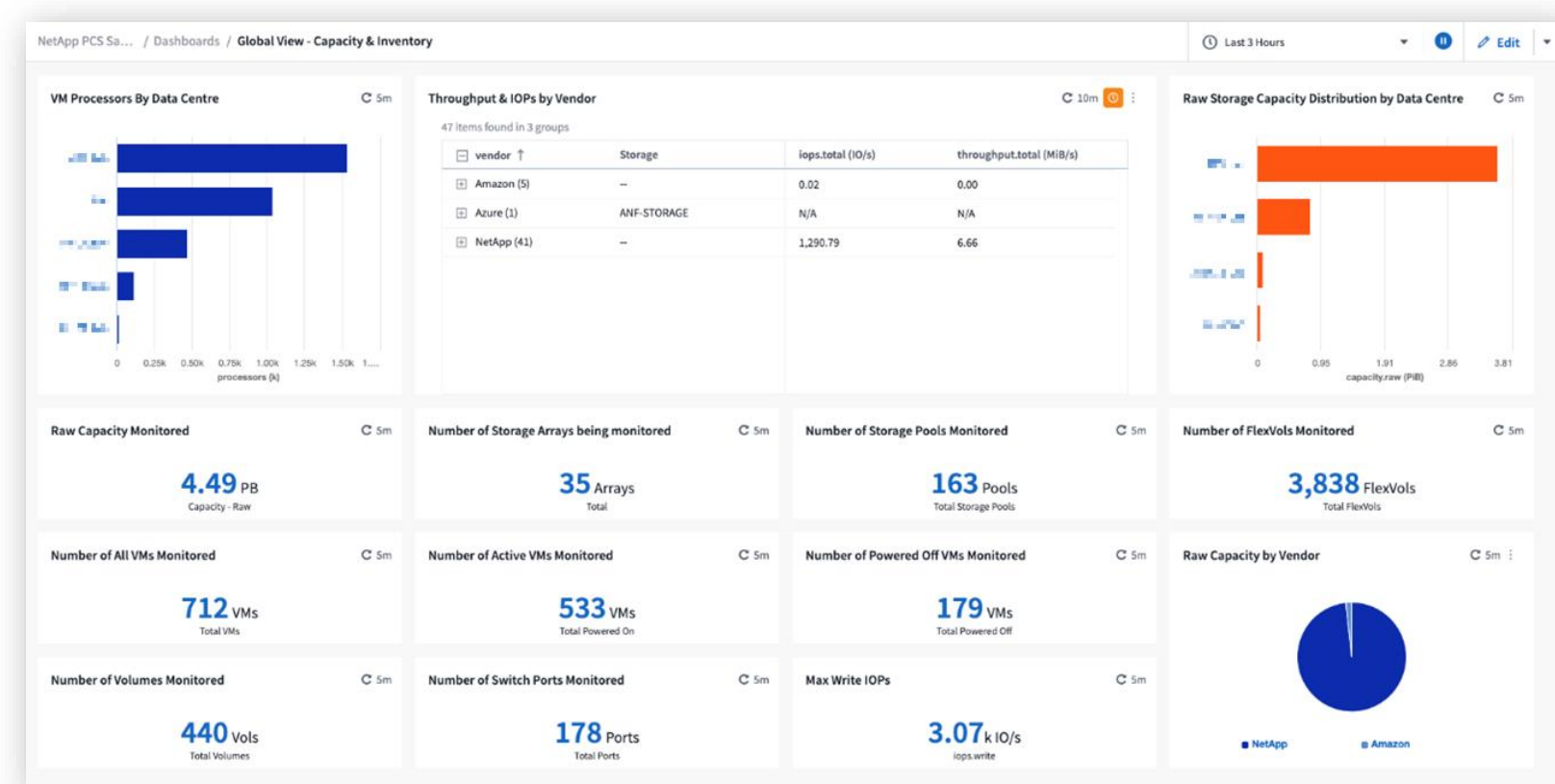
*Please see details for respective country under Professional Services Legal Terms.*

Any different time can be agreed upon if required and against payment of additional costs.

## Travel expenses

Local travel cost included (where local support is available) as standard in the **HCAS**. If no local support is available and local presence is required additional costs will incur (flights, hotel).

# Sample reports



## Prerequisites

The following prerequisites apply for the execution of the service:

- The required infrastructure and rights are to be provided by the customer to the Fujitsu Professional Service Engineer in such a way that all necessary tooling (NetApp) can be installed and configured for successful data gathering. The prerequisites will be communicated once the project starts using a questionnaire.
- Prerequisites by the NetApp tooling (supported platforms, technologies).
- Customer should provide an adequate place for the Fujitsu engineer to work and a conference room with projector for the final presentation if not done remotely.
- Customer agrees that data gathered will leave the premise and will be sent to the NetApp SaaS platform for further analysis (*see data gathering, deprovisioning and SaaS compliancy*).

## Exclusions

**HCAS** is an assessment service and is as such limited in time and in amount of scanned data. The data gathering can not take longer than 30 days. Data Sense analysis is also limited to analyzing 10TB of data.

**For a full engagement without limits, please contact the Professional Services team.**

## Data gathering, deprovisioning and SaaS compliancy

The data gathered as part of HCAS will be sent to the NetApp SaaS Platform. Please review and confirm company policies for SaaS connectivity and data gathering.

More information can be found here:

- [What information does DII store?](#)
- [What is BlueXP Classification?](#)

The customer is responsible to remove any local installations at the end of this service or buy the needed licenses.

All cloud instances will be deprovisioned by NetApp according to the [DII security overview](#).

## Scope of service location

**HCAS** is available locally in the following countries: Belgium, Finland, France, Germany, Luxembourg, Netherlands, Portugal, Spain, United Kingdom.

**HCAS** is available remotely in the remaining EMEA countries ([see travel expenses](#)).

## Legal information / general terms and conditions

In addition to this data sheet, which includes a final list of the service features of the services, the general business terms and conditions of the respective local Fujitsu entity for the performance of the services in its respective local version shall apply.

Please refer to [terms and conditions](#).

## Fujitsu portfolio: products, solutions and services

Built on industry standards, Fujitsu offers a full portfolio of IT hardware and software products, services, solutions and cloud offering, ranging from clients to datacenter solutions and includes the broad stack of business solutions, as well as the full stack of cloud offerings. This allows customers to select from alternative sourcing and delivery models to increase their business agility and to improve their IT operation's reliability.

[www.fujitsu.com/global/products/](http://www.fujitsu.com/global/products/)

[www.fujitsu.com/global/services/](http://www.fujitsu.com/global/services/)

## Further information

To learn more about Fujitsu, please contact your Fujitsu sales representative or Fujitsu business partner, or visit our website [www.fujitsu.com](http://www.fujitsu.com).

## Disclaimer

Technical data is subject to modification and delivery subject to availability. Any liability that the data and illustrations are complete, actual or correct is excluded. Designations may be trademarks and / or copyrights of the respective owner, the use of which by third parties for their own purposes may infringe the rights of such owner.

## Fujitsu green policy

Fujitsu green policy innovation is our worldwide project for reducing burdens on the environment.

Using our global know-how, we aim to contribute to the creation of a sustainable environment for future generations through IT.

Please find further information on our website [www.fujitsu.com](http://www.fujitsu.com).

## Contact

Email: [DDS.Europe@fujitsu.com](mailto:DDS.Europe@fujitsu.com)

Website: [www.fujitsu.com](http://www.fujitsu.com)

