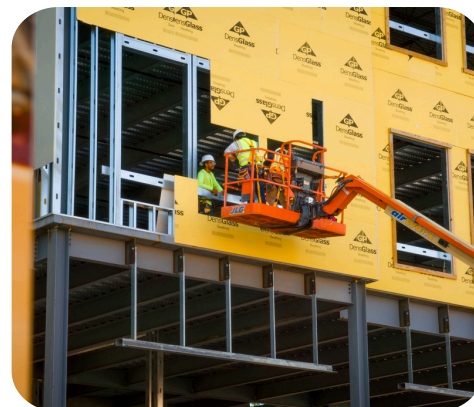


Copilot Ready-Set-Go



AI is here. Is your team ready for all it has to offer?

While Microsoft's Copilot has the potential to transform how you get work done, it can be difficult when it comes to implementing and learning how to make the most of your investment.



"To get the most of AI tools like Copilot, it is essential to ensure your environment is structured correctly and securely."



Jamie Wottowa
Director - Consulting Services
GadellNet

Our Ready Assessment Process

Generative AI promises to be a game-changer when it comes to jobsite productivity. But to realize the potential of AI, you must first figure out how to incorporate its powerful capabilities into your existing systems and processes.

As a Microsoft Partner, we'll work alongside you to accelerate your Copilot adoption, tailoring experiences, security, and structure to the needs and requirements of your work and your team.



INITIATE

Organize stakeholders and scope of engagement



DISCOVER

Technical review, information gathering, establish current state



ANALYZE

Deep dive technical review, questioning, and analysis



LAUNCH

Prepare recommendations, documentation, and complete training

Our Customizable Approach

Phase 1: Copilot for M365 Discovery and Preparedness

Designed to gauge current capabilities and readiness for successful integration and deployment.

- Kickoff by setting goals and interviewing key stakeholders
- Ensure technology environment meets security and infrastructure requirements
- Confirmed license requirements and verify compatibility with M365 apps
- Connect Microsoft Copilot Dashboard for the tenant and each individual user
- Final review of SharePoint/OneDrive Architecture, Permissions, and Data Access
- Determine eligible users and create a phased rollout plan

Phase 2: Microsoft Copilot Data Security Readiness

Our experts will introduce your team to Copilot and how to get started using it in the M365 environment.

- Configure data privacy and governance policies in your Microsoft 365 tenant
- Identify any compliance/regulatory requirements in relation to data security and access
- Review standards for threat protection, security monitoring, and incident response.

Engagement Deliverables

Your team will walk away from the engagement with a comprehensive report outlining the findings from the assessment for each tenant including:

- **Results and Documentation** from Discovery and Preparedness Phase.
- **Actionable Recommendations** for optimization of data security.
- **High-level Roadmap** for Microsoft Copilot rollout and training.



Learn More at www.gadellnet.com or reach out to our team today

Check out these technology resources
[How I Saved An Hour A Day With Copilot](#)
[How to Write a Strong AI Prompt](#)



St. Louis: (314) 736-5304

Indianapolis: (317) 912-3091

Denver: (720) 464-5920