



Data-driven collaboration platform for energy companies  
Developing digital workflows for subsurface evaluation, screening,  
portfolio management & improved organizational understanding

# Glex Energy platform

**A data-driven collaboration platform for cross-functional subsurface, exploration and BD teams**

Oil & gas – Carbon Capture and Storage – Offshore wind – Deep sea mining

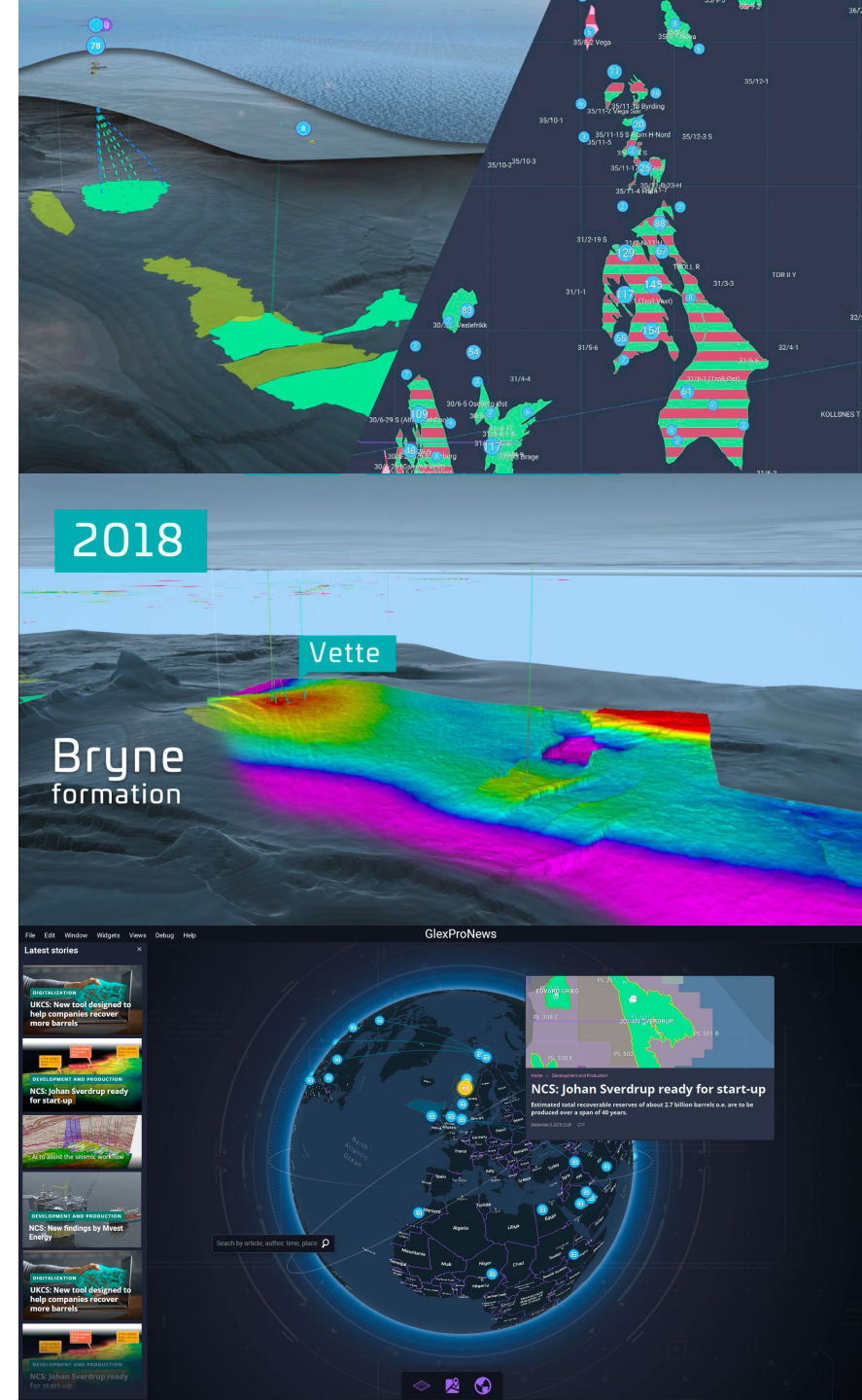
Create

Organize

Visualize

Analyse

- Build and maintain your exploration and business development portfolio.
- Supported by a large amount of structured and unstructured public and third party data.
- Easily screen for subsurface, exploration and BD opportunities in a unified digital platform.
- Analyse and visualize data in multiple dimensions and views inspired by game design and technology.
- Increase organizational understanding through actionable intelligence and interactive workflows.
- Present and report on your data, facts and findings internally and externally

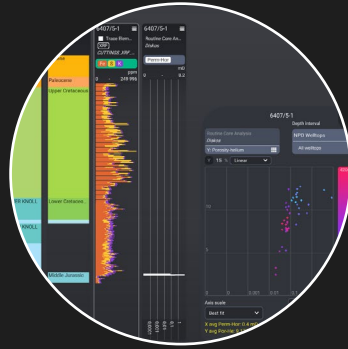


# Our software services



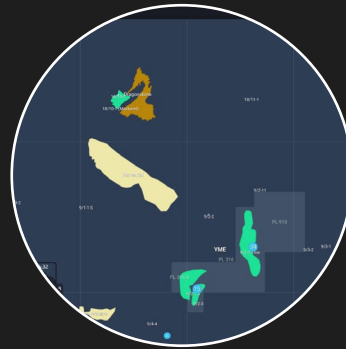
## Explore

- Collaboration and decision support
- Data discovery
- Present and visualize
- Screening and business development toolkit



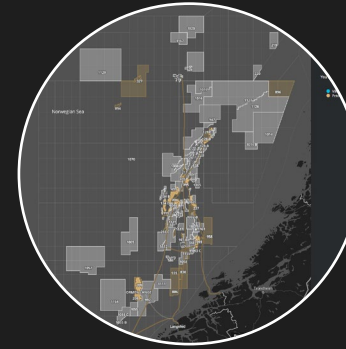
## Analyze

- Well, cuttings and geoscience
- Integrated with third-party data vendors
- Machine learning and big data analysis
- Map and well view



## Evaluate

- Build and maintain a prospect inventory
- Collaboratively rank and evaluate prospects
- Filter and search to find prospects and opportunities on a global scale



## Display

- Marketing and external use
- Showcase your portfolio on a global scale
- Designed for your business profile
- "Plug and play"



## Monitor

- Critical information at your fingertips
- Dashboards for
  - Production
  - Drilling
  - Exploration

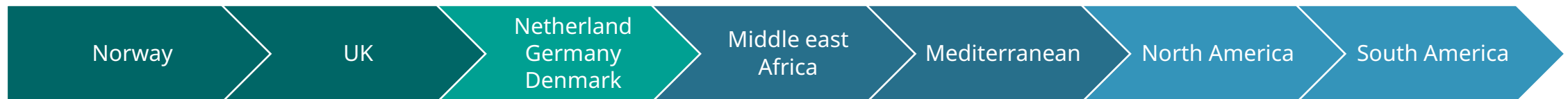
All applications are powered by the Glex Energy data platform and API

# Glex Energy data-platform and API

- Data from a range of public and third-party data-providers
- Automated data pipelines keep all data up-to-date
- All data is contextualized and accessible through our APIs



## Geographic availability



# Proprietary data input

- Data from proprietary data storage and applications can also be added
- Automated data pipelines keep all data up-to-date
- We try to avoid data duplication as far as possible
- Will need to store a data-layer that enables visualization and filters



## In-app data import

Prospects (Shp, json/geojson, xls)  
Applications (Shp, json/geojson)  
Well logs (LAS, csv, xls, etc.)  
Unstructured data (PDF, excel, PPT, images, etc)



## Standard data connectors

Connectors to ArcGis, Petrel, GeoX and Sharepoint on roadmap.  
Looking to partner with 3<sup>rd</sup> party enablers for better connections with existing applications.



## Custom data connectors

Custom built to proprietary databases or applications.  
Connectors with time-based or trigger-based input/output.  
Lean on the OSDU standards.



## API connections

Direct communication via API's is preferable where possible.  
Lean on the OSDU standards.



## Contact

Jørgen E. Napstad

[jorgen@glex.no](mailto:jorgen@glex.no)

+47 93 40 65 26

Øyvind Søvik

[oyvind@glex.no](mailto:oyvind@glex.no)

+47 92 05 19 28