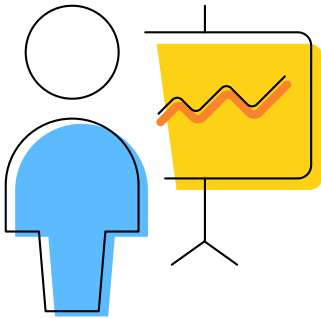


POWER PLATFORM INVENTORY

glueckkanja-gab AG



glueckkanja-gab AG is the merger of the two companies Glück & Kanja and GAB to form a Cloud Managed Service Provider. Both companies have been among the leading IT consulting companies and top partners of Microsoft in Germany for over 20 years. We were once again able to occupy top positions in the ISG 2021 study and, with over 10 Gold certifications, can offer all Microsoft cloud technologies with far above-average expertise and experience. With over 250,000 managed clients at many enterprise customers such as DB Schenker, EnBW and Uniper, as well as hundreds of medium-sized customers, glueckkanja-gab is at the top worldwide and also has excellent networks within the Microsoft Corp product groups in Seattle and Israel.

WHAT WE OFFER



At some point in time the question arises: “What is our current Power Platform usage and configuration?” with our inventory approach we answer this question and identify optimization potential.

 Power Apps

Information on Power Apps an environments currently in use.

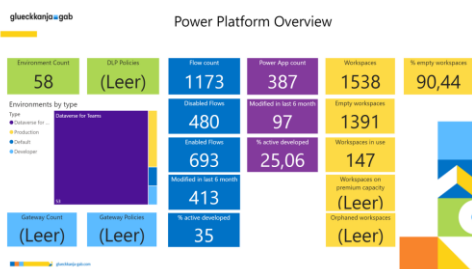


Power
Automate

Overview of enabled and disabled Flows.
Development activity and environments.



Workspace overview
by type, overview on
Power BI artefacts like
Reports, Dashboards
or Dataflows. Usage of
dedicated capacity.



Key Facts

Use of standard APIs

- Least privileges
- Standard reports for the following Power Platform areas
 - Environments
 - On-Premises Gateways
 - Power Apps
 - Power Automate
 - Power BI

Next Steps

Based on the inventory outcome:

- Optimize Power Platform Governance based on our Blueprint
- Further actions to drive Power Platform adoption aligned with the Microsoft Maturity Model.