



a brand of
glueck  **kanja**

RADIUS is so 90s.

But it **rocks!**

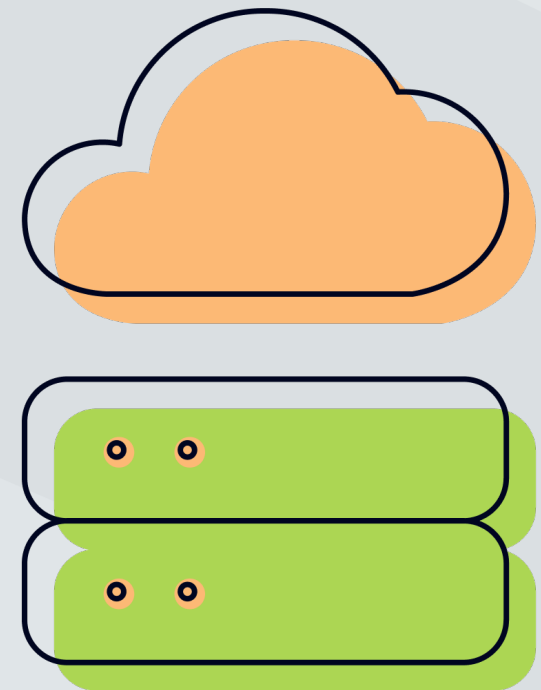
Why RADIUSaaS?

Accelerate your cloud journey with cloud-based RADIUS



You are looking...

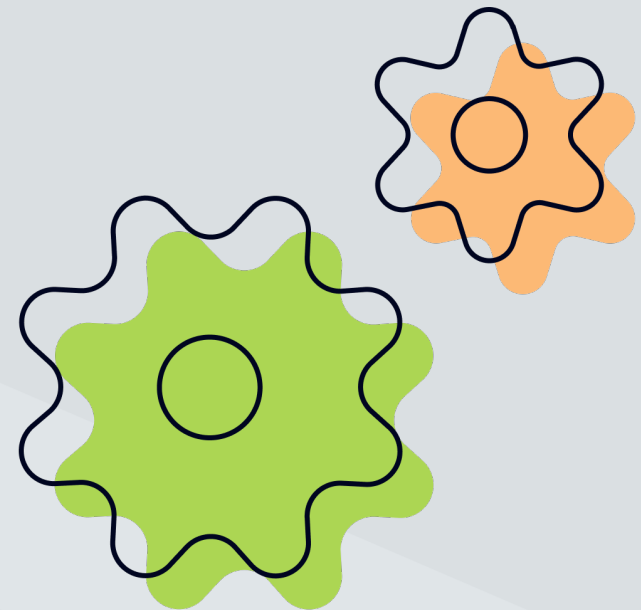
- ✓ for a trusted, secure and highly-available cloud-based RADIUS service
- ✓ to get rid of your on-premise AAA servers
- ✓ for a single service for a multi-vendor network
- ✓ to get rid of pre-shared keys (PSK)
- ✓ to consolidate your AAA infrastructure across different sites
- ✓ for automated patching, updating, and scaling



Authentication Options



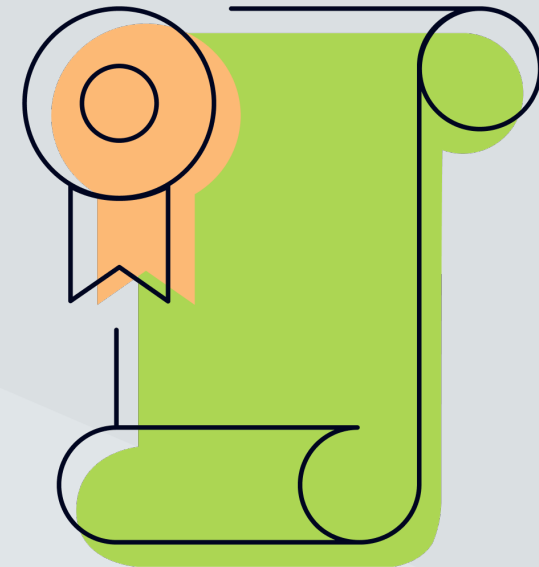
- Main use-case: Certificate based authentication (CBA)
- Special use-cases: Credentials based authentication (username & password)
 - Special devices
 - BYOD
 - Guests



Certificate-based Authentication (CBA)

Never trust – always verify

- Authenticating with certificates means that **no secret credentials** are ever transmitted - passwords cannot be stolen because they are not used
- X.509 certificates are a well established standard with unparalleled compatibility and adoption
- Managing certificates with popular MDM solutions is easy!
(Auto-enrollment | Auto-renewal | Auto-revocation)
- Ensure only trusted devices or users receive a certificate
- CBA is phishing-resistant
- Revoke certificates to block access in real-time



Username-password Authentication

Only use when necessary!

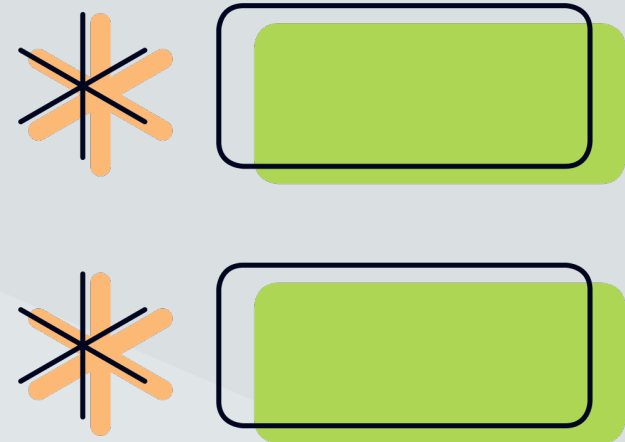
Compatibility

Manage username/password accounts locally¹ in scenarios where certificates cannot/are impractical to be used for authentication:

- BYOD
- Legacy & IoT devices (printers, room systems, ...)

Guest Access for your Network

- Empower your employees to manage guests using self service
- Your employees can provide, renew or revoke access



¹Does not support integration with Cloud Identity Providers such as Entra ID.

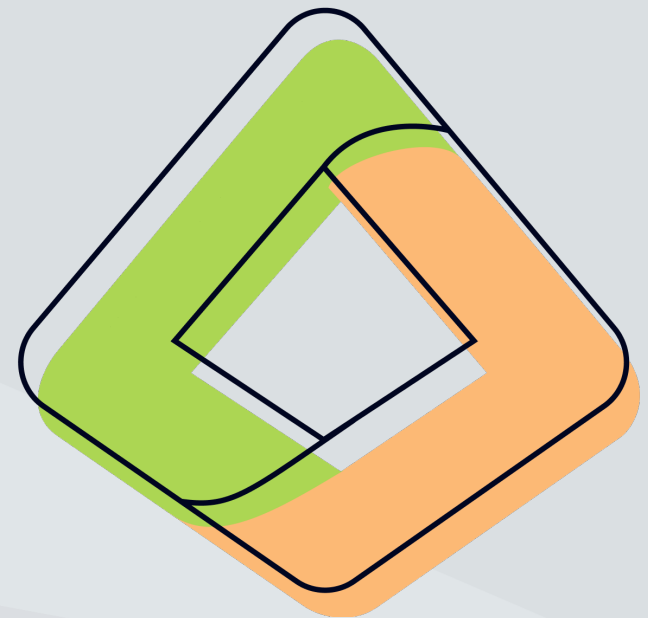
No Entra credentials?



More precise: **Why not using Entra credentials (username & password) for network authentication?**

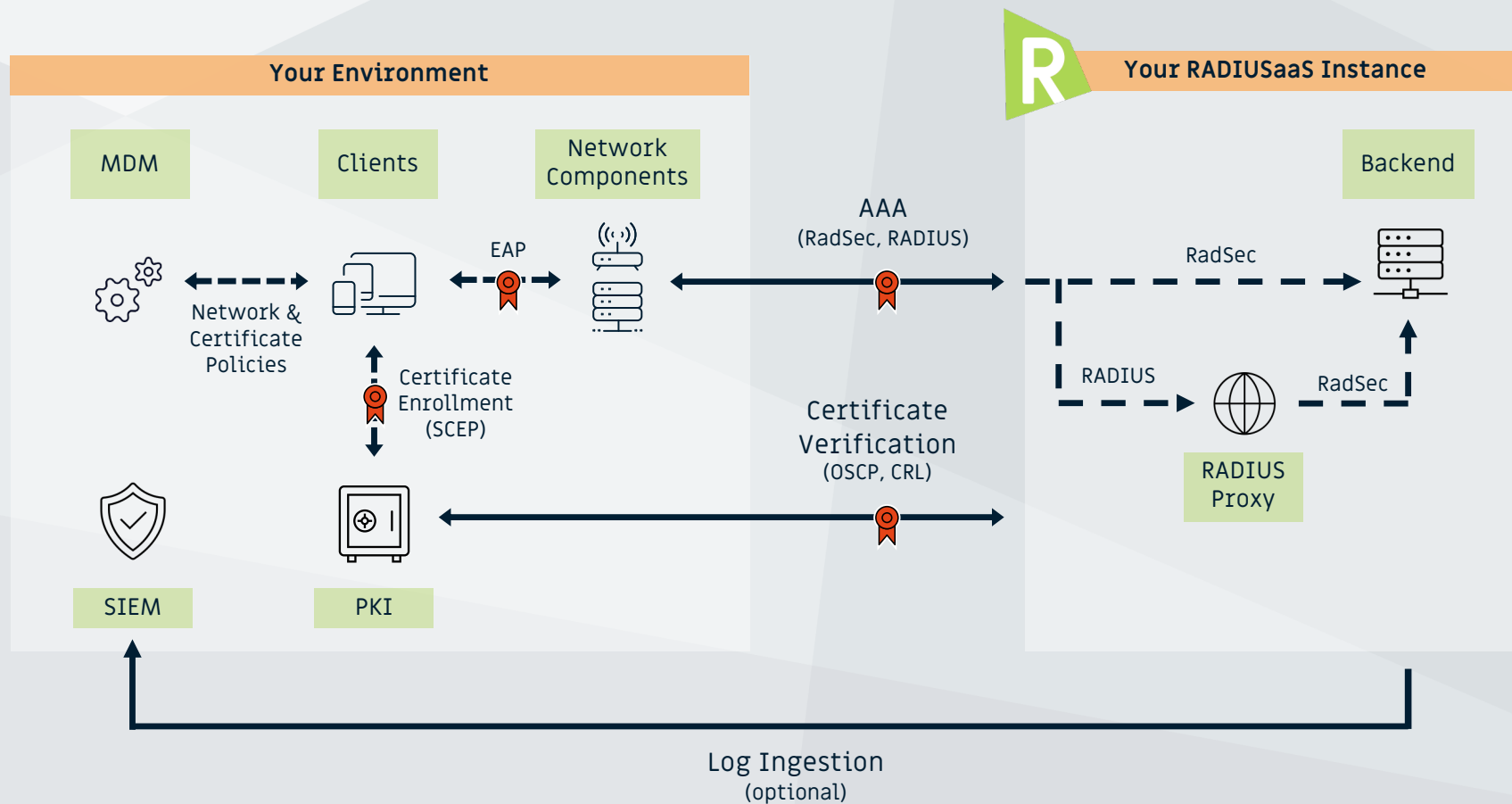
- You want your users to use the Entra credentials as less as possible (Passwordless)
- Inconvenience
- Security
- Credentials would have to be transported within the RADIUS protocol

P.S.: We are using Entra for the authentication to the RADIUS web-portal. But from a technology & security perspective, this is a totally different approach!



Architecture

Overview



Architecture & Administration

Service Design



High-level Design

- Hyperscaler **independent, highly-available**
Kubernetes-based **zero-trust** service
- Options for geographic and Hyperscaler
redundancy
Active-Active Configuration
- Multiple hosting locations available around
the world
- Scalability 50 to >100 k users

Administration

- Admin logon via Entra ID SSO
Multiple roles available
Conditional Access policies enforced
- No additional customer tenant
permissions required
- Automatic patches and updates

RADIUS vs. RadSec

Protocols at a glance



	RADIUS	RadSec
Transport Protocol	UDP	TCP
Authentication & Encryption	RADIUS Shared Secret (symmetric)	mTLS (asymmetric)
Support for EAP	Yes	Yes
Authenticator Compatibility	Supported by all manufacturers	Supported by major manufacturers (incl. Cisco, Meraki, FortiNet, Aruba)

We recommend RadSec, when available!

Vendor, PKI and MDM Interoperability



Does RADIUSaaS fit into my environment?

- ✓ All relevant AAA protocols supported
(RADIUS | RadSec)
- ✓ Works with any WAP + Switch vendor
... that supports EAP
- ✓ Works with VPN Gateways
... that support EAP-TLS-based AAA via RADIUS
(Azure WAN Gateway | Microsoft RRAS | ...)
- ✓ Compatible with popular PKIs
(SCEPman | Intune Cloud PKI | ADCS/NDES | ...)
- ✓ Seamlessly push Wired or WiFi configurations via MDM
(Microsoft Intune | Jamf Pro | Kandji | Mosyle | Google Workspaces)
- ✓ ... to various OS platforms
(Windows | macOS | iOS | iPadOS | Android | ChromeOS)

R RADIUSaaS

PKIs



SCEPman



Intune Cloud PKI



Microsoft ADCS/NDES

MDM Systems



OS Platforms



Networking Equipment



Deployment & Configuration

Configure your cloud RADIUS in no time!



Step 1 – Service Provisioning

- We will deploy your RADIUSaaS instance

Step 2 – Establish Trust

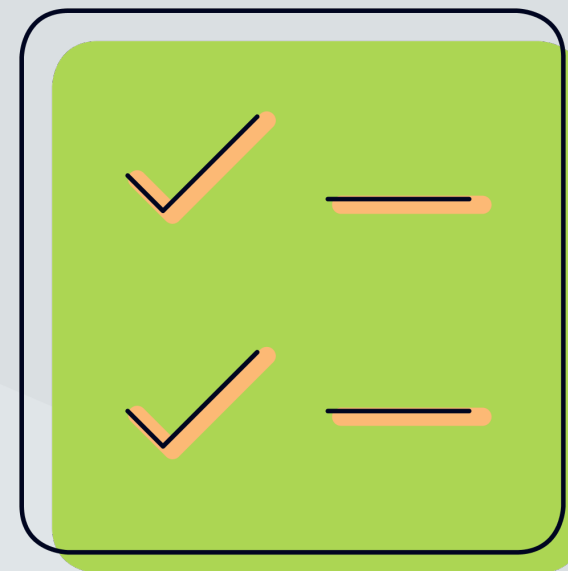
- Define the CA(s) you want to trust for client authentication

Step 3 – Configure your Network Equipment

- Enable 802.1X on your WAPs and switches and point them to your RADIUSaaS instance for AAA

Step 4 – Push Networking Profiles to your Endpoints

- Set up policies in your preferred MDM solution to automatically configure WiFi, LAN or VPN connections





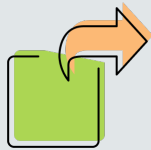
Advanced Features

Unleash the full potential of RADIUSaaS



Insights

Built-in dashboards provide detailed authentication log analysis.



Log Exporter

Export logs to your environment:

- Log Analytics
- Webhook (JSON)
- Microsoft Teams Channel



Rule Engine

Provides you with enhanced controls for access requests:

- Limit access to certain credential types (e.g. certificates) and CAs
- Ensure requests originate from your infrastructure (SSID and MAC filters)
- Implement static or dynamic VLAN steering

Trials

Test RADIUSaaS without strings attached

R

Contact us for a free trial:

<https://www.radius-as-a-service.com/start-now/#try>

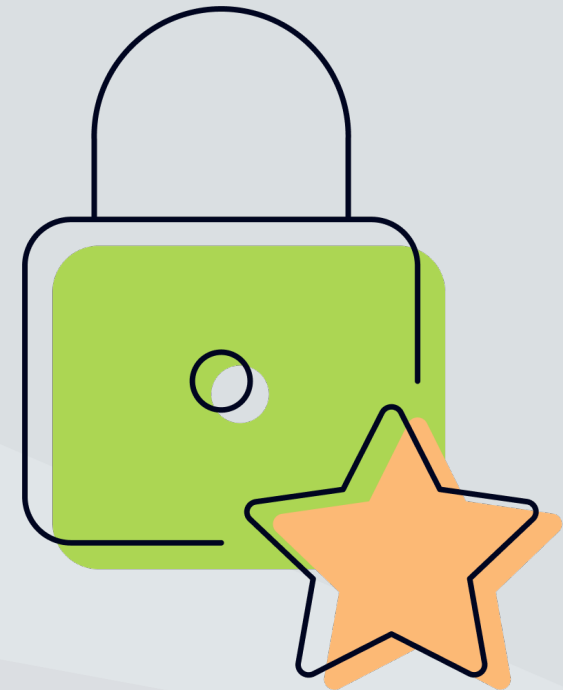
- ✓ Full features / no limitations
- ✓ Up to 50 users and 30 days
- ✓ Easy conversion to production



Licensing Model

Full flexibility for your scenario

- Trust-based licensing model
- User-centric (5 mobile + 5 stationary devices)
Options: Device-based or hybrid licensing
- Full support and incident response included
Germany and Australia based
- Discounts for NFPs and charities
- Flexible subscription terms
1 year | 1 month
- Add-ons
Additional Service Instances | Additional RADIUS Proxies
(Geo- and Hyperscaler Redundancy)





Pricing and where to buy?

Buy on your preferred transaction platform

- ✓ Volume Discounts automatically applied
- ✓ Minimum number of licenses: 50

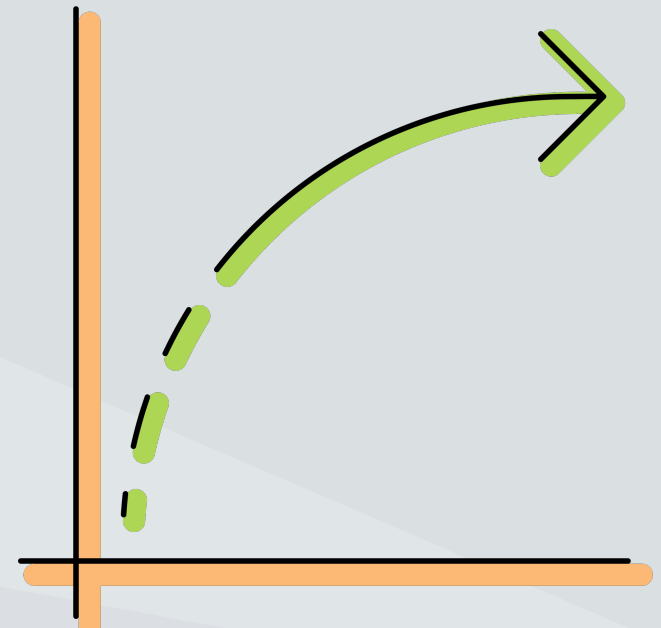
Buy RADIUSaaS on ...



- ✓ Available in > 50 Countries
- ✓ Billed against your Azure subscription (Pay-as-you-go, EA, ...)
- ✓ Microsoft is likely to be listed in your supplier database



- ✓ Available in 180+ countries
- ✓ Flexible and localized payment methods
Invoice (30 days net) | Credit Card PayPal |
ACH Credit | ...



The RADIUSaaS & SCEPman Bundle

Your cloud-based network authentication dream team

- Seamless integration between CA and RADIUS simplifying deployment and configuration
- Real-time revocation via OCSP leveraging Object-Binding Technology
Optionally: Enforce device compliance for network access
- A service in your realm – No external tenant permissions required

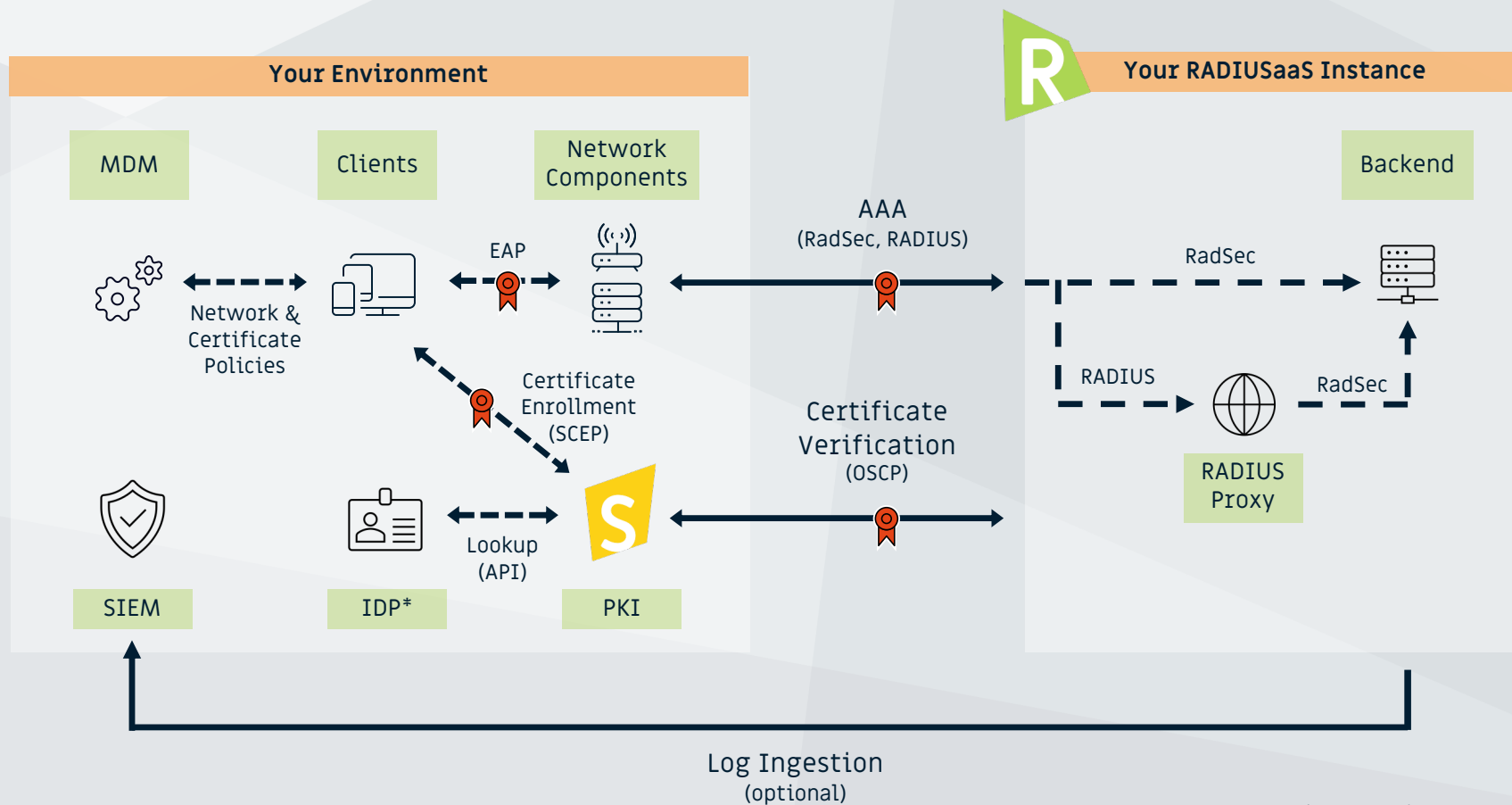


Get both – save 25%



The RADIUSaaS & SCEPman Bundle

Architecture



* Supported IDPs: Intune, Entra ID, Jamf Pro



RADIUSaaS

www.radius-as-a-service.com



a brand of

glueck  kanja