



a brand of  
glueck  kanja

PKI **is evil.**

Run away with

**Intune**



# Why SCEPman?

Accelerate your cloud journey with a cloud-based Certificate Authority

## You are looking ...

- ✓ for a fully-fledged and highly-secure cloud-based Certificate Authority ...that is under your control
- ✓ to replace your on-premises CA/PKI
- ✓ for a complete automation of the certificate lifecycle management
- ✓ for great compatibility with a range of MDMs and OS platforms
- ✓ for automated patching, updating, and scaling

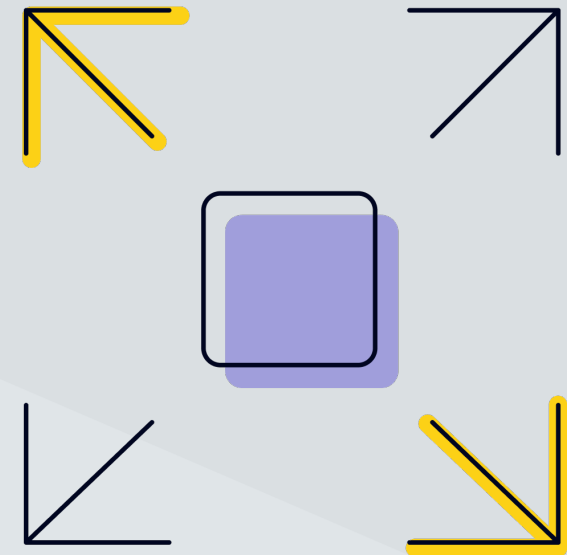


# Why SCEPman?

Accelerate your cloud journey with a cloud-based Certificate Authority

## For use-cases such as ...

- ✓ Secure WiFi and network access
- ✓ Smart Card authentication
- ✓ Entra ID CBA (phishing-resistant MFA)
- ✓ Server trust (TLS)
- ✓ SSO for on-premises resources (Kerberos)
- ✓ Code and document signing
- ✓ ...and many more

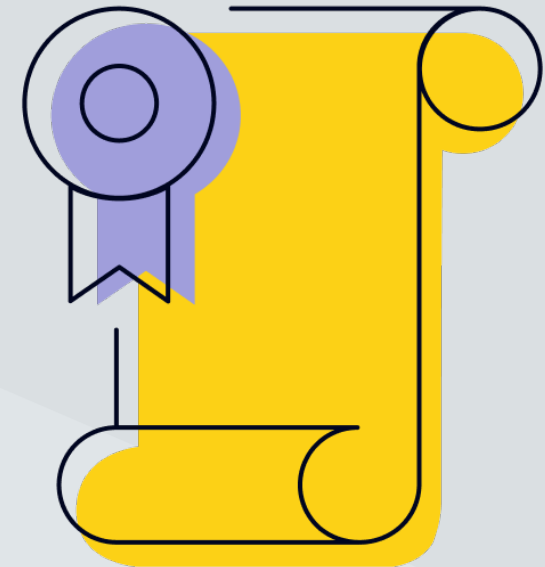




# Certificate-based Authentication (CBA)

Never trust – always verify

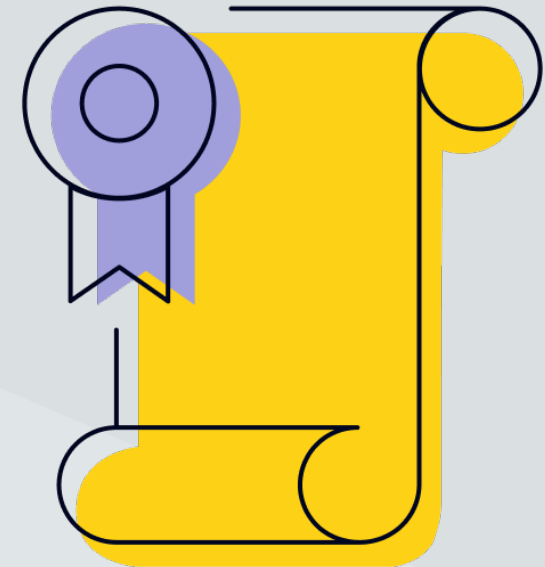
- Authenticating with certificates means that **no secret credentials** are ever transmitted - passwords cannot be stolen because they are not used
- X.509 certificates are a well established standard with unparalleled compatibility and adoption
- Managing certificates with popular MDM solutions is easy!  
(Auto-enrollment | Auto-renewal | Auto-revocation)
- Ensure only trusted devices or users receive a certificate
- Revoke certificates to block access in real-time



# Object Binding

Certificate revocation – automated!

- Forget about manually revoking certificates by binding their validity state to a directory object:
  - Microsoft Intune: Entra ID User or Device object | Intune Device object
  - Jamf Pro: Computer, Device, or User object
- SCEPman automatically binds each certificate to the device or user object it is enrolled to
- The object reference is encoded into the certificate's serial number
- Benefits:
  - Reduce process complexity (employee off-boarding, stolen or lost devices, device compromise, ...)
  - Less backup requirements: SCEPman does not have to keep track of issued certificates

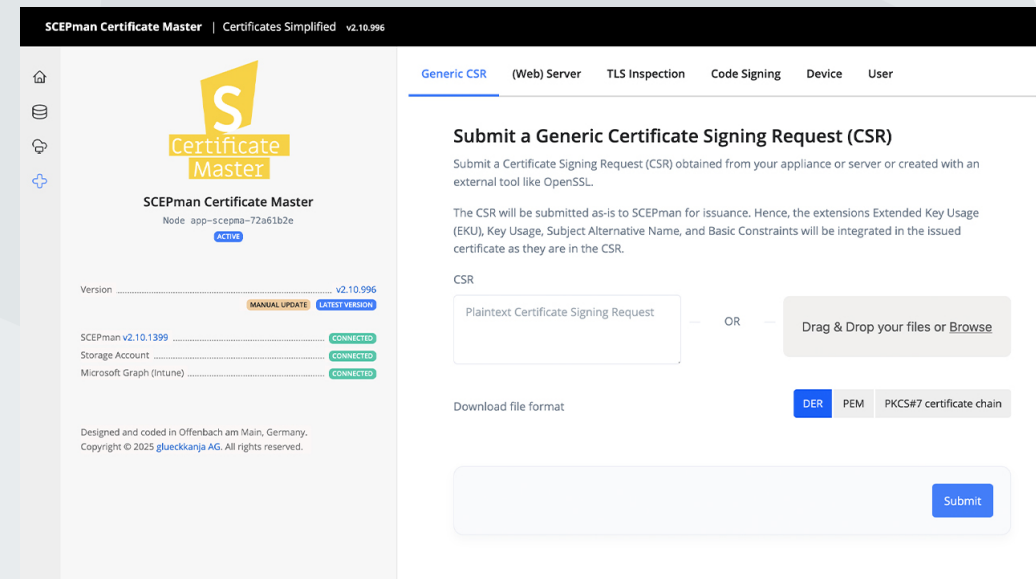


# Certificate Master

Full control over your certificates

Certificate Master provides a web portal to the SCEPman CA enabling admins to perform manual certificate management tasks, e.g.

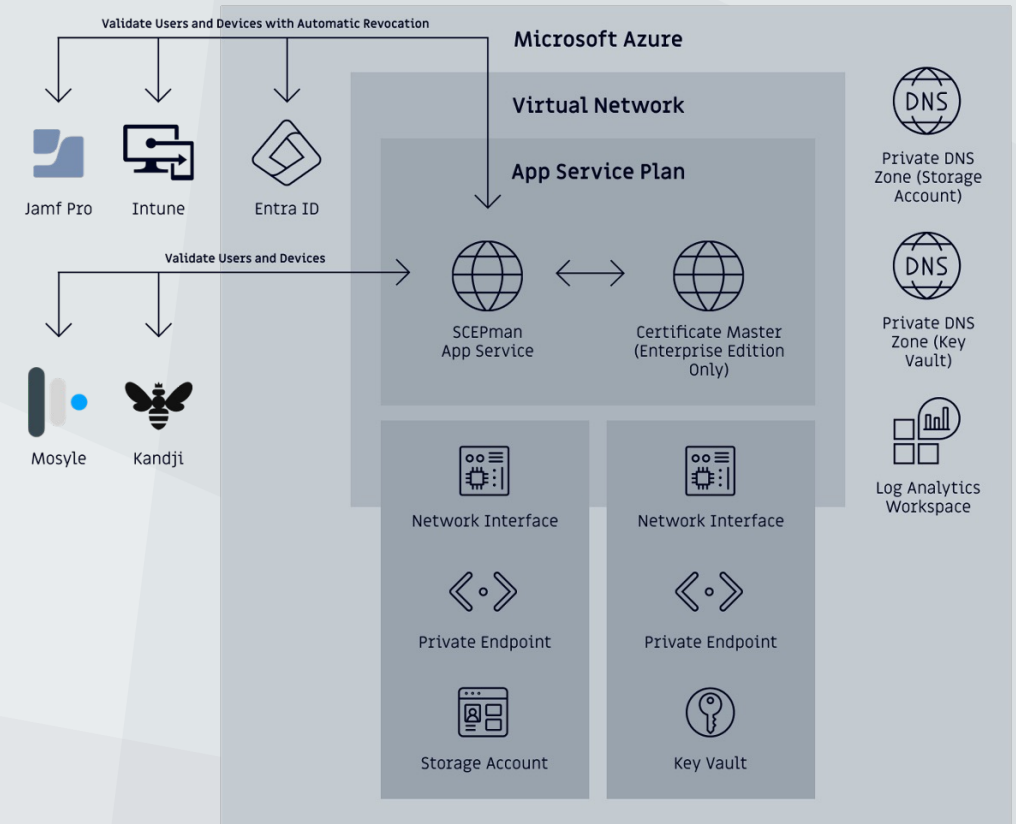
- Signing CSRs
- Issuing certificates (via pfx download)  
TLS server authentication | client authentication | smart cards / YubiKeys | SSL inspection | ...
- Revoking (MDM-enrolled) certificates manually
- Reviewing revocation status and reason
- Keeping track of the certificate inventory (revoked & active)



# Architecture & Administration

## A CA service in your realm

- Azure-based zero-trust service deployed into **your tenant**. Free choice of Azure data center  
No vendor access, i.e. full accountability, data sovereignty and service control in your hands
- Geo-redundant and auto-scaling configuration options available
- HSM-backed Azure Key Vault  
Data center redundancy | Managed backup | Purge protection
- Backups and replication fully managed by native Azure Services  
Azure Key Vault | Storage Account
- Administration via Azure Portal
- Automatic Patching and Updates





# Supported Protocols

Flexible Certificate Enrollment and Verification



## Enrollment & Renewal

Protocol	Scenarios	Authentication
<b>SCEP</b> Simple Certificate Enrollment Protocol	Automatic enrollment and renewal of certificates on managed endpoints (Windows OS, macOS, iOS, iPadOS, ChromeOS). Supported by most MDM solutions	Dynamic (Intune) or static (other MDMs) SCEP challenge
<b>EST</b> Enrollment over Secure Transport	Renewal of certificates on (unmanaged) clients (e.g. Linux), servers and IoT devices	Certificate-based (mTLS)
<b>Enrollment REST API</b>	REST enrollment API for PKCS#10/CMS-encoded CSRs. Used in custom automations, e.g. IoT device assembly line	Entra ID (user, certificate, client secret)
<b>Manual via Web Portal</b> Certificate Master	Certificate Master provides a simple web portal to manually sign CSRs or issue form-based certificates for various use-cases. Certificate installation based on *.pfx file	Entra ID (user)

# Supported Protocols

## Flexible Certificate Enrollment and Verification



### Verification

Protocol	Scenarios
OCSP Online Certificate Status Protocol	<p>Check a certificate's revocation status in real-time while considering the associated object's lifecycle state (automatic revocation – not available on all MDM systems)</p> <p>Supported by all operating systems and many networking appliances and services (NACs, RADIUS services, VPN Gateways, Firewalls, ...)</p>
CRL Certificate Revocation List	<p>SCEPman optionally exposes a CRL distribution point (CDP) from where a CRL can be downloaded. Automatic revocation is not supported</p> <p>Used for scenarios where OSCP support is not available (e.g. Entra ID CBA, MDCA CA) or as a fallback for OCSP (e.g. RADIUS verification fallback)</p>

# OS & MDM Interoperability

Does SCEPman fit into my environment?

- ✓ All relevant certificate enrollment and verification protocols supported
- ✓ Seamlessly push certificates via MDM...  
(Microsoft Intune | Jamf Pro | Kandji | Mosyle | Google Workspaces)
- ✓ ...to various client OS platforms  
(Windows | macOS | iOS | iPadOS | Android | ChromeOS | Linux)
- ✓ Supported on various server platforms  
(Windows Server | Linux Servers | ...)
- ✓ Leverage automatic revocation with Microsoft Intune and Jamf Pro

## MDM Systems



## OS Platforms





# Deployment & Configuration

Set up SCEPman in no time!

## Step 1 – Infrastructure Deployment

- Azure resource deployment via [ARM](#) or [Terraform](#)

## Step 2 – Identities & Permissions

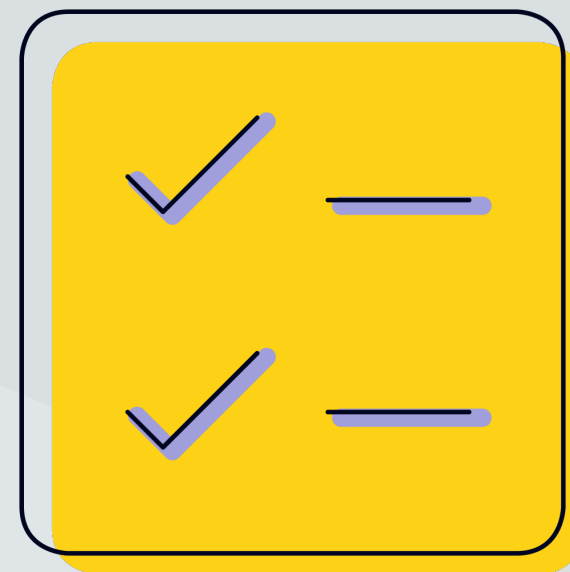
- Leverage the SCEPman [PowerShell](#) cmdlet to automatically create identities and to assign permissions

## Step 3 – Create a Root CA

- Set up SCEPman as a [unique root CA](#) with a single click of your mouse

## Step 4 – Enroll Certificates to your Endpoints

- Set up policies in your preferred MDM solution to [automatically enroll certificates](#)

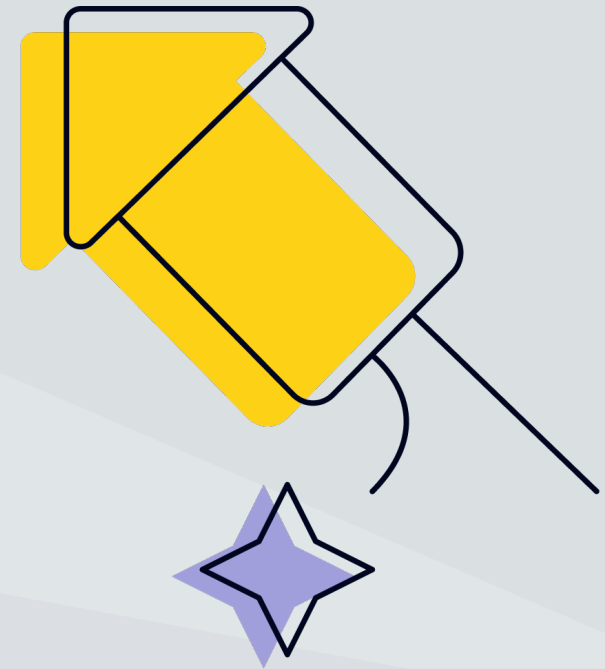


# Advanced Features

Unleash SCEPman's full potential

## Configure...

- ✓ Comprehensive Monitoring & Alerting  
(Log Analytics | Azure Event Hub | Health Checks)
- ✓ Metric or time-based auto-scaling
- ✓ Geo-redundancy & high-availability
- ✓ Hierarchical CAs
- ✓ Your own (private) CA key
- ✓ ECC CAs (e.g. for IoT)
- ✓ A custom domain



# Trials

Test SCEPman without strings attached

**Contact us for a free trial:**

<https://www.scepman.com/start-now/#try>

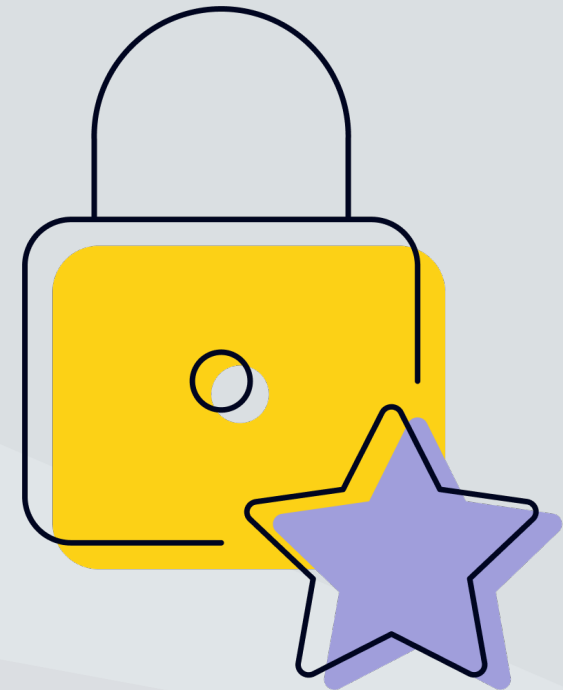
- ✓ Full features / no limitations
- ✓ Up to 50 users and 30 days
- ✓ Easy conversion to production



# Licensing Model

Full flexibility for your scenario

- **Trust-based** licensing model
- User-centric (5 mobile + 5 stationary devices)  
Options: Device-based or hybrid licensing
- Full support and incident response included  
Germany and Australia based
- Discounts for NFPs and charities
- Flexible subscription terms  
1 year | 1 month
- Add-ons  
SCEPman Setup Support





# Pricing and where to buy?

Fair pricing on your preferred transaction platform

- ✓ Volume Discounts automatically applied
- ✓ Minimum number of licenses: 50

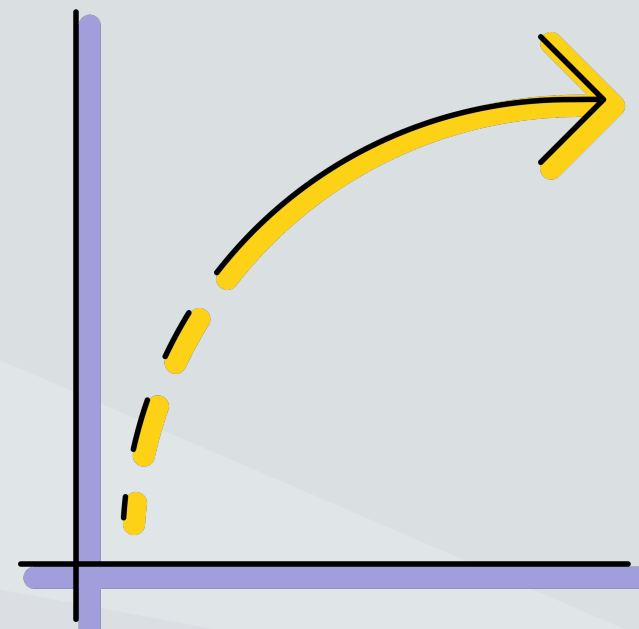
## Buy SCEPman on ...



- ✓ Available in > 50 Countries
- ✓ Billed against your Azure subscription (Pay-as-you-go, EA, ...)
- ✓ Microsoft is likely to be listed in your supplier database



- ✓ Available in 180+ countries
- ✓ Flexible and localized payment methods  
Invoice (30 days net) | Credit Card PayPal |  
ACH Credit | ...





# The RADIUSaaS & SCEPman Bundle

Your cloud-based network authentication dream team

- Seamless integration between CA and RADIUS simplifying deployment and configuration
- Real-time revocation via OCSP leveraging Object-Binding Technology  
Optionally: Enforce device compliance for network access
- A service in your realm – No external tenant permissions required



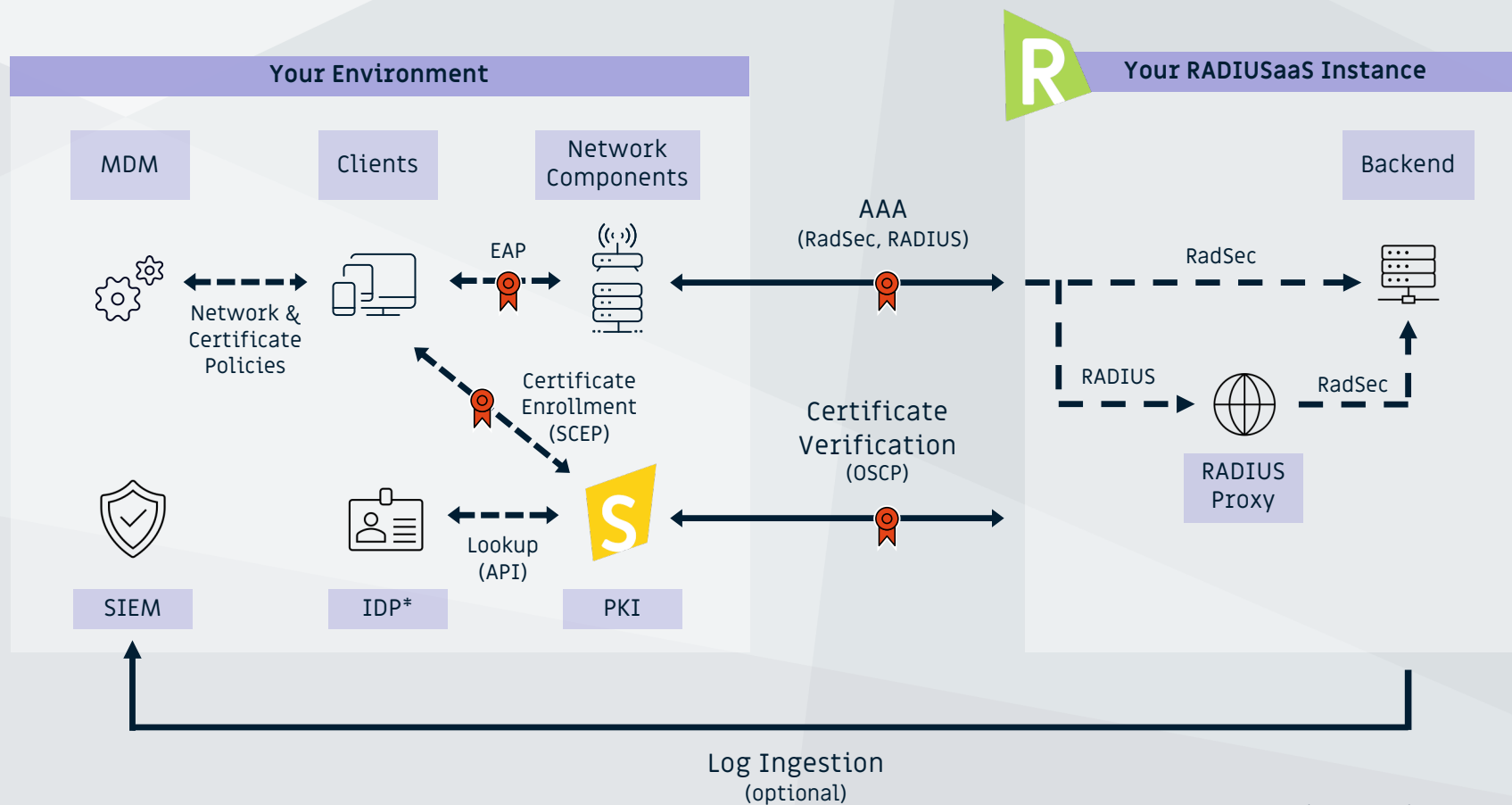
---

Get both – save 25%



# The RADIUSaaS & SCEPman Bundle

## Architecture



\* Supported IDPs: Intune, Entra ID, Jamf Pro



SCEPman

[www.scepman.com](http://www.scepman.com)



a brand of

glueck  kanja