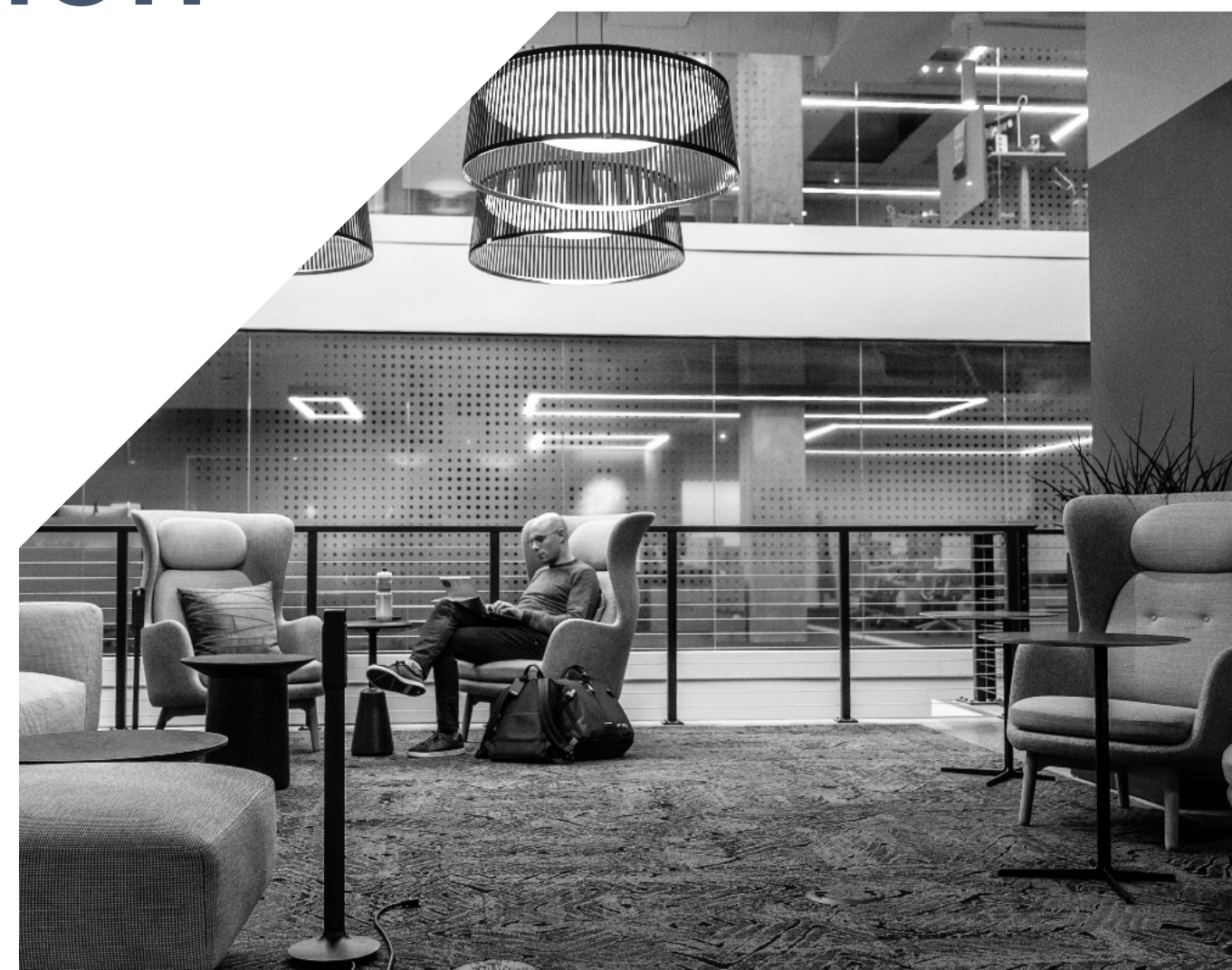
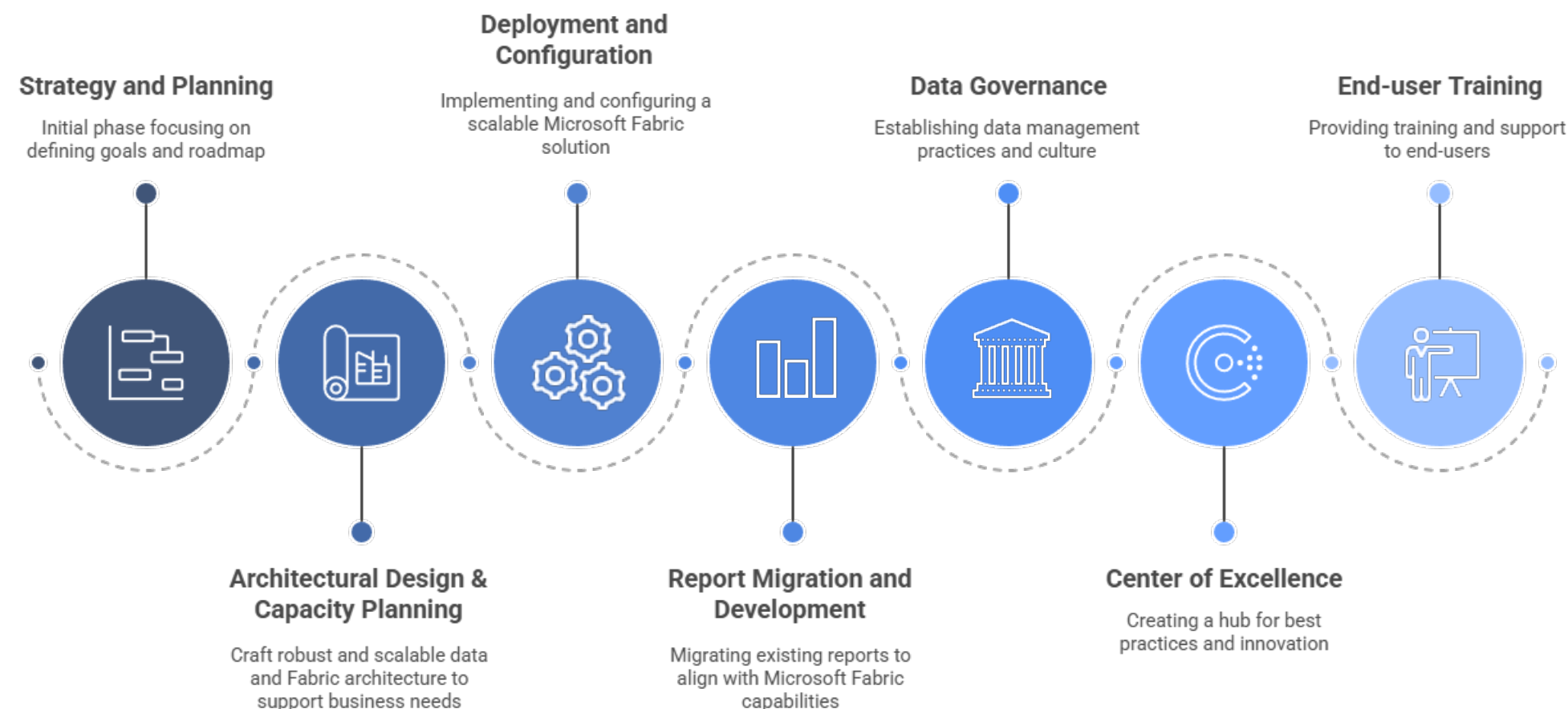


# Microsoft Fabric Implementation

Tailored Strategies for Your Success



# Unlock the Power of your Data with our Microsoft Fabric Accelerators



## Expert Insight

Gain clarity on your current data sources, storage methods, and management practices, identifying data silos and opportunities for improvement.

## Tailored Strategies

Equip your organization with forward-thinking strategies that align with modern data estate requirements., ensuring readiness for future data and AI initiatives.

## Unified Data Estate

Unify data estate and prepare for AI and machine learning models, accelerating BI adoption and reducing data sharing limitations.

## Focus on ROI

Our approach is designed to deliver quick wins and long-term value, helping you realize a return on investment faster.

## Duration: 4-6 Weeks

## Target Audience: Technical leaders, Data teams

Our Microsoft Fabric Implementation engagement is a comprehensive, end-to-end service that delivers the design, deployment, and operationalization of Microsoft Fabric.

Through hands-on collaboration and proven frameworks, we help you unlock a single platform for data engineering, real-time analytics, business intelligence, and AI — at scale.

This program is ideal for organizations looking to modernize legacy systems, unify siloed data, and establish a trusted analytics foundation with AI readiness baked in.

## Deliverables

- Fabric Reference Architecture and Design Document
- Deployed Microsoft Fabric Workspaces with Data Pipelines and lakehouses
- Security and Governance Policies (Access, Metadata, Naming Standards)
- Operational Runbook and Administrator Guide
- Enablement Sessions and Recorded Walkthroughs

## Key Business Outcomes

- Accelerate time-to-insight with unified, real-time and historical analytics
- Simplify data estate with a single platform for data engineering, business intelligence, and artificial intelligence
- Reduce technical debt by migrating fragmented tools into a cohesive experience
- Empower business teams through governed self-service capabilities
- Establish readiness for Microsoft Copilot and AI-driven analytics scenarios

## Engagement Outline

- **Discovery and Use Case Alignment**
  - Engage stakeholders to define business goals, analytics use cases, and success criteria
  - Assess current data analytics platform
  - Review source systems, and business readiness for Fabric integration
  - Identify security and regulatory requirements
- **Microsoft Fabric Solution Architecture and Planning**
  - Design domain-based workspace and data store strategy (lakehouses, warehouses, databases)
  - Map workloads needs across Fabric experiences (Data Science, Data Factory, Real-Time Intelligence, Power BI)
  - Align the design with Microsoft's best-practice recommendations, business needs, and goals.
- **Microsoft Fabric Implementation and Data Integration**
  - Provision workspaces
  - Develop data models, lakehouses and warehouses
  - Ingest and transform data using Dataflows Gen2, Pipelines, and Notebooks
  - Integrate key data sources (Databases, Dataverse, APIs, flat files)
  - Enable code version control, continuous integration, and continuous deployment (CI/CD).
- **Governance and Security Implementation**
  - Implement role-based access control, workspace permissions, and usage policies
  - Define governance standards for naming, metadata, and lineage tracking
  - Integrate with Microsoft Purview for data cataloging and governance
- **Enablement and Operational Readiness**
  - Conduct knowledge transfer and hands-on enablement sessions for teams
  - Provide operational documentation, deployment runbooks, and adoption guidance
  - Prepare analytics teams for self-service, governed BI and AI readiness



# Ready to Harness your Data Potential?

Register for our Microsoft Fabric workshop today to gain valuable insights and start your cloud journey.

**GOBI Technologies, Inc.**  
104 West 40th Street 5th Floor  
New York, NY 10018

Phone: (646) 553-5885  
Email: [info@gobiit.com](mailto:info@gobiit.com)  
Web: [www.gobiit.com](http://www.gobiit.com)

