

Accelerate Manufacturing is here to speed everything up...

01

What?

We have **prebuilt** all the tools to ensure your ERP is deployed rapidly. The tools we have:

- Standard Process library
- Pre-created user stories
- Testing and training aids

02

Why?

ERP projects can be very complicated and not only take a long time but it will also consume all your best people. Accelerate Manufacturing helps by:

- Reducing project timeline and costs
- Templated approach ensures standard technology is utilised

03

Who?

Accelerate Manufacturing assists in 3 main business function areas for any size company.

- Manufacturing
- Finance
- Distribution

Accelerate Manufacturing

Rapid ERP deployment of back-office functions for manufacturing organisations wanting to adopt a cloud ERP solution

- Accelerate Manufacturing is a **Rapid deployment solution for a manufacturing organisation**, leveraging D365 Finance and Supply Chain application; utilising a catalogue of pre-configured end-to-end processes
- Each process in the catalogue has a supporting process flow and configuration data set, and with minimal effort is deployed in the D365 application
- Workshops are utilised to enable Project teams to review and refine the demonstrated core journeys and incorporate specific unique Client requirements
- Xccelerate can be deployed with a phased approach i.e., Finance, Supply Chain, Manufacturing

56

Finance journeys

- Financial Planning
- Project to Profit
- Acquire to Dispose
- Expense Management
- Record to Results
- Financial Reporting

20

Manufacturing journeys

- Design to Retire
- Forecast to Demand
- Plan to Produce
- Cost Management
- Reporting

60

Distrubution

- Procure to Pay
- Prospect to Quote
- Order to Cash
- Warehousing
- Case to Resolution

23

Cross workstream journeys



Supported by:

- High Level Cross Workstream Process flows
- Detailed Process flows (Up to Level 4)
- Preconfigured & Documented Personas based User Stories

Our process library

Finance

Financial planning

- Basic Budgeting
- Budget Control and Analysis
- Reporting and Analysis
- Manage Period End
- Budget Planning

Project to profit

- Quotations, Budgets, Estimates
- Grant Management
- Project Information Management setup
- Project Master Data Management
- Project Requirement Planning & Scheduling
- Project Supply Chain Management
- Project Monitoring & Controlling

Acquire to dispose

- Fixed Asset Budgeting
- Creation of Fixed Asset Record
- Acquire a Fixed Asset
- Adjust Fixed Assets
- Depreciation of Fixed Asset
- Value Adjustments, Provision Allocation and Splitting
- Transfer and Disposal of a Fixed Asset
- Period End Close

Expense management

- Employee Expense Set Up
- Employee Credit Card Administration
- Create and Submit Expense Report
- Review Expense Report
- Expense Payments

Record to report

- GL Setup
- Journals, Analysis & Reports
- Bank Transaction automation/process & Statement Reconciliation
- Period End Workspace
- 45.15. Quality and Quarantine Management
- Sales Tax - Local and Industry Specific Requirements
- Consolidation of Entities
- Financial Statements Management Reports

Finance reporting

- Tax Reporting
- GL Reporting
- AP Reporting
- AR Reporting
- Cash and Bank Management Reporting
- Fixed Assets Reporting
- Forecasting and Master Planning
- Warehouse Reporting
- Production Reporting
- Sales and Marketing

Manufacturing

Resource and route management

- Resource Creation Journey
- Route Creation Journey
- Route Groups
- Resource Group
- Resource Capability creation
- Operations
- Calendars
- Working times
- Production Journal Names

Discrete manufacturing life cycle

- Production order life cycle
- BOM Configuration
- Scheduling the production jobs
- Moving Raw Material to Production Input Location
- Starting and reporting progress in PFE
- Printing labels in Production
- Quality Order on RAF
- Production order cost and Variances
- Rework Discrete manufactured item
- Production orders delayed
- Manajig Jobs with deviations

Process manufacturing life cycle

- Batch order life cycle
- Formulae Configuration
- Scheduling the batch jobs
- Moving Raw Material to Production Input Location
- Printing labels in Production
- Starting and reporting progress in PFE
- Quality Order on RAF
- Production order cost and Variances
- Rework Batch manufactured item

Subcontracting life cycle

- Subcontracting operation as part of Production/batch order process
- Service item per individual service
- Service item price to include service cost
- Purchase order receipt of service item

PFE/MFE

- Configuring the Manufacturing Framework
- Processing the Jobs
- Label Printing
- Document Groups and Instructions

Supply chain

Procure to pay

- Vendor Onboarding & Management
- Purchase Order Based Procurement
- Requisition Based Procurement
- Pricing & Commitments: Purchase Agreements
- Pricing: Trade Agreements
- Request for Quotation to Purchase Order
- MRP to PO
- Purchase Order from a Project
- Invoicing & Payments
- Invoice OCR
- Vendor Rebates
- Vendor Collaboration Workspace
- Intercompany
- Consignment Stock
- Forward Confirmations to Vendors
- Charges
- Additional Configuration and Processes

Prospect to quote

- Define Sales Strategy
- Estimate and Quote Sales
- Identify and Qualify leads
- Manage Customer Relationships
- Pursue Opportunities
- Run Marketing Campaigns

Order to cash

- Leads, Opportunities, Prospects in F&O
- Commissions and CRM
- Customer Onboarding & Management
- Sales Quotation Process
- Sales Order Process
- Pricing & Commitments: Sales Agreements
- Pricing: Sales Trade Agreements
- Customer Sales Returns
- Service item per individual service
- Sales Commissions
- Invoicing, Payments and Period End
- Revenue Recognition
- Collections and Credit
- Intercompany Trade

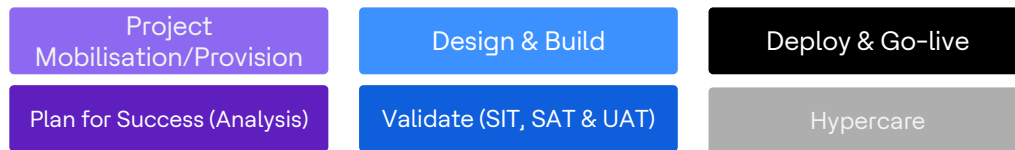
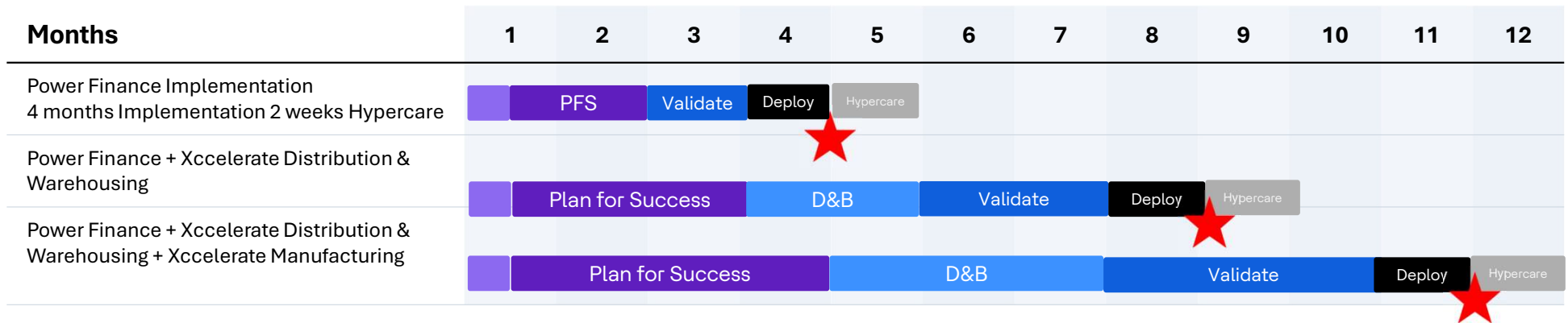
Warehousing

- Warehouse Setup
- Inventory Setup
- Mobile Device Setup
- Product Setup
- Shipment and Load Planning
- Inbound Receipt of Transfer Orders
- Inbound Receipt of Purchase Orders
- Vendor Managed Inventory (Consignment)
- Internal Warehouse Movements
- Raw Material Picking
- Finished Goods Put Away
- Adjustments and Scrap
- Full Annual Stock Take
- Cycle Counting
- Outbound Picking of Transfer Orders
- Outbound Picking of Sales Orders
- Charges
- Warehouse Reporting
- Manage Stock Blocking

Case to resolution

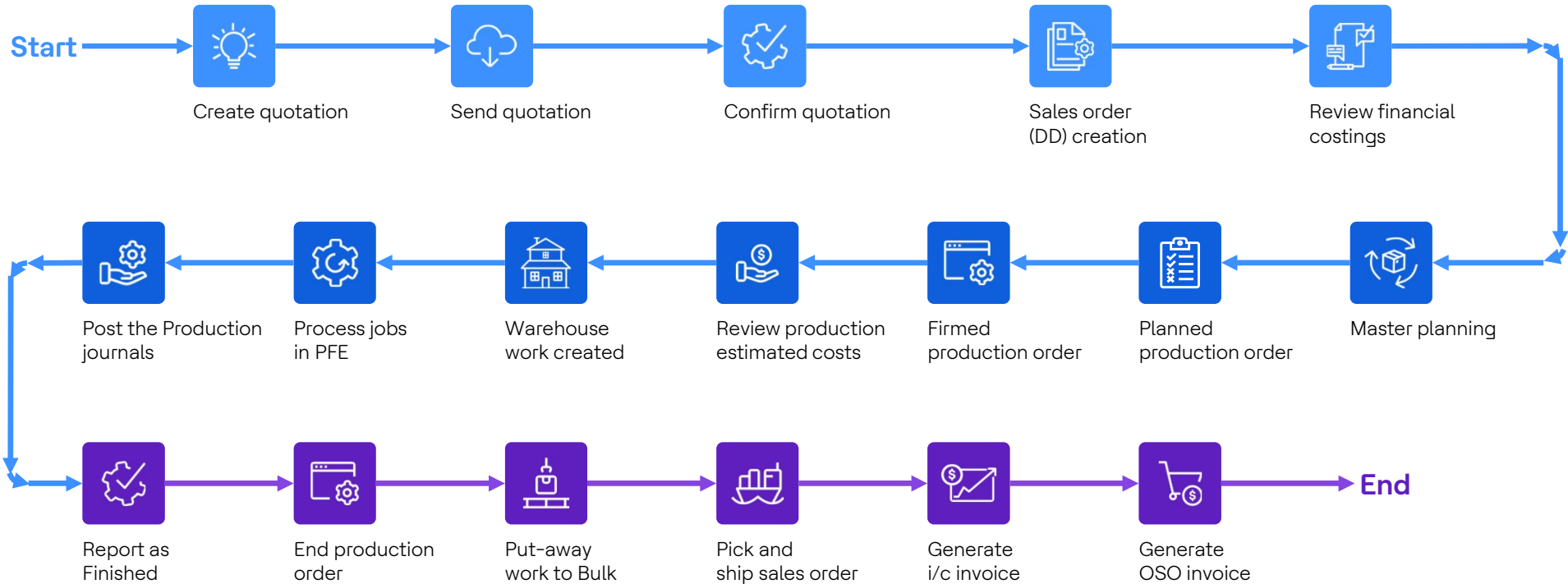
- Case Management
- Service and Warranties
- Service Order & Subscription Management
- After-Sales Maintenance
- Product Recall & Return Authorization
- Knowledge Management
- Procurement and Sourcing Reporting

Accelerate with to go live

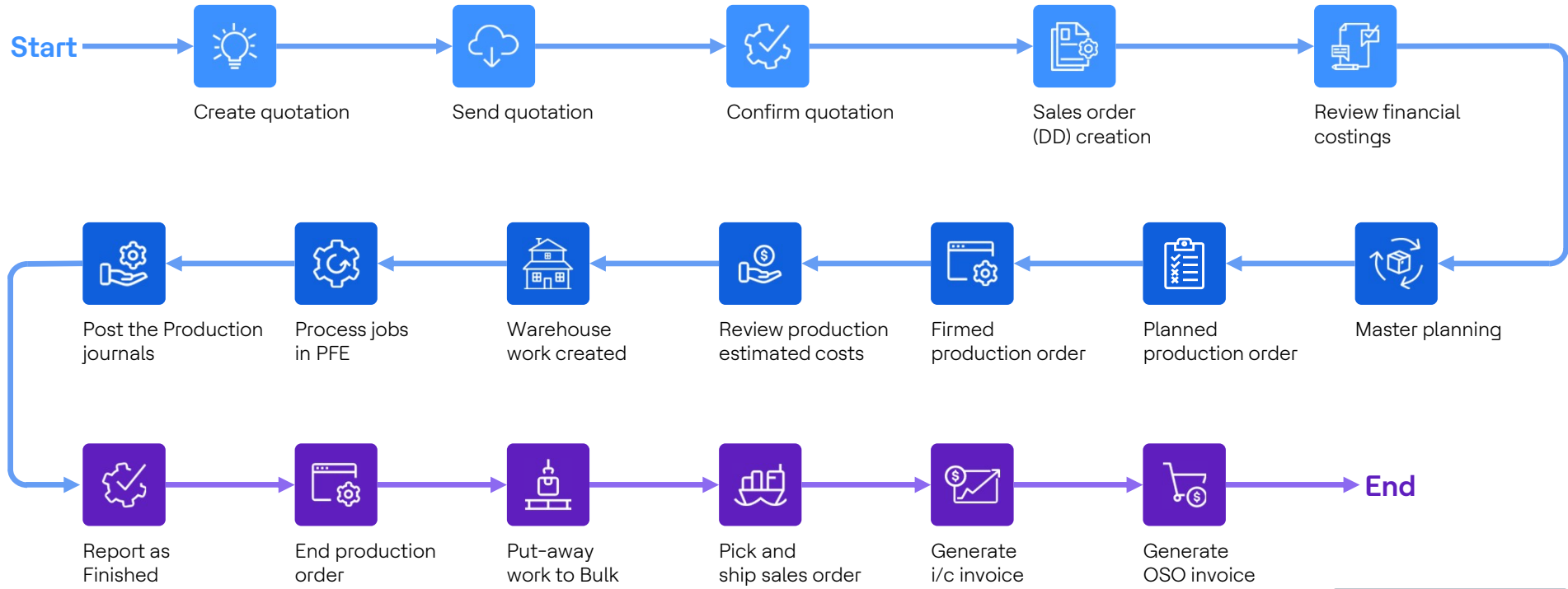


 Go-live

#Journey 1: Make to order manufacturing process originating from a quotation



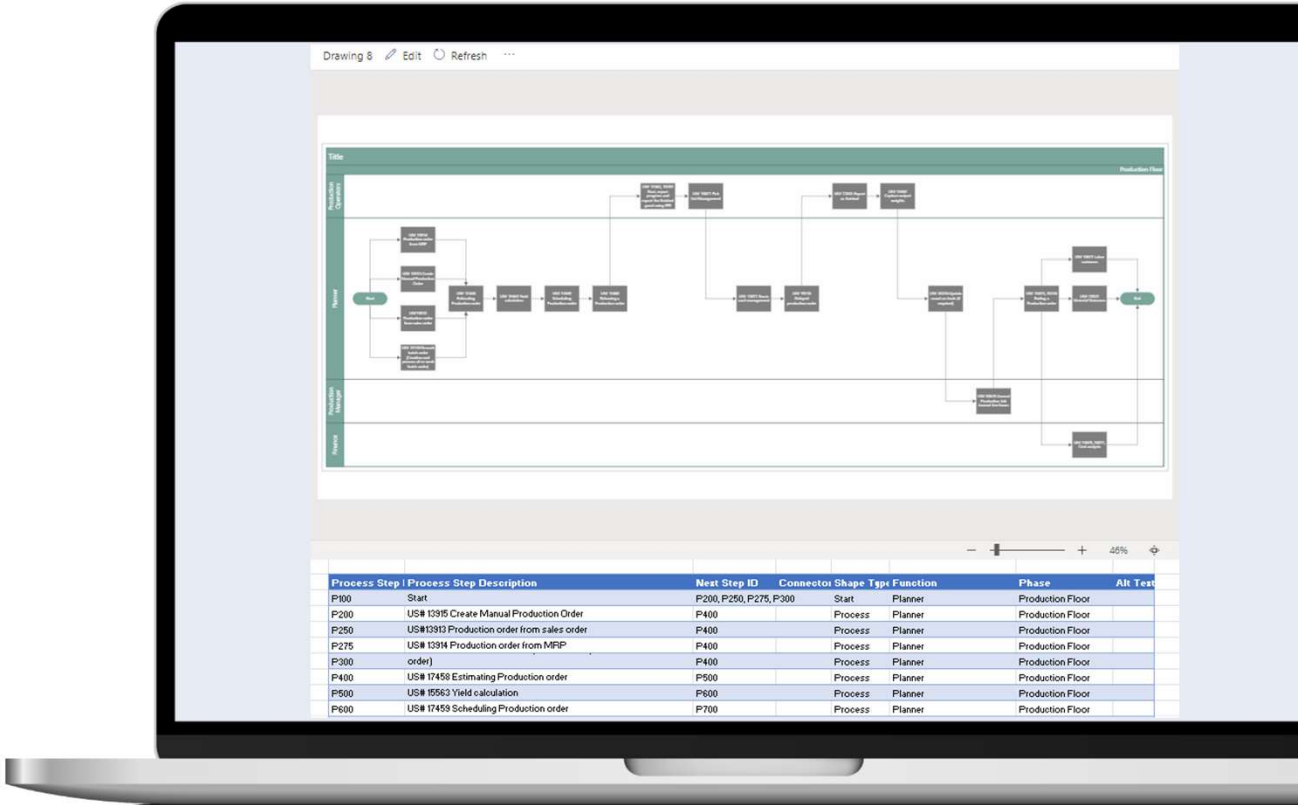
#Journey 2: Make to stock manufacturing process originating from MRP



★ IC Transactions Generated

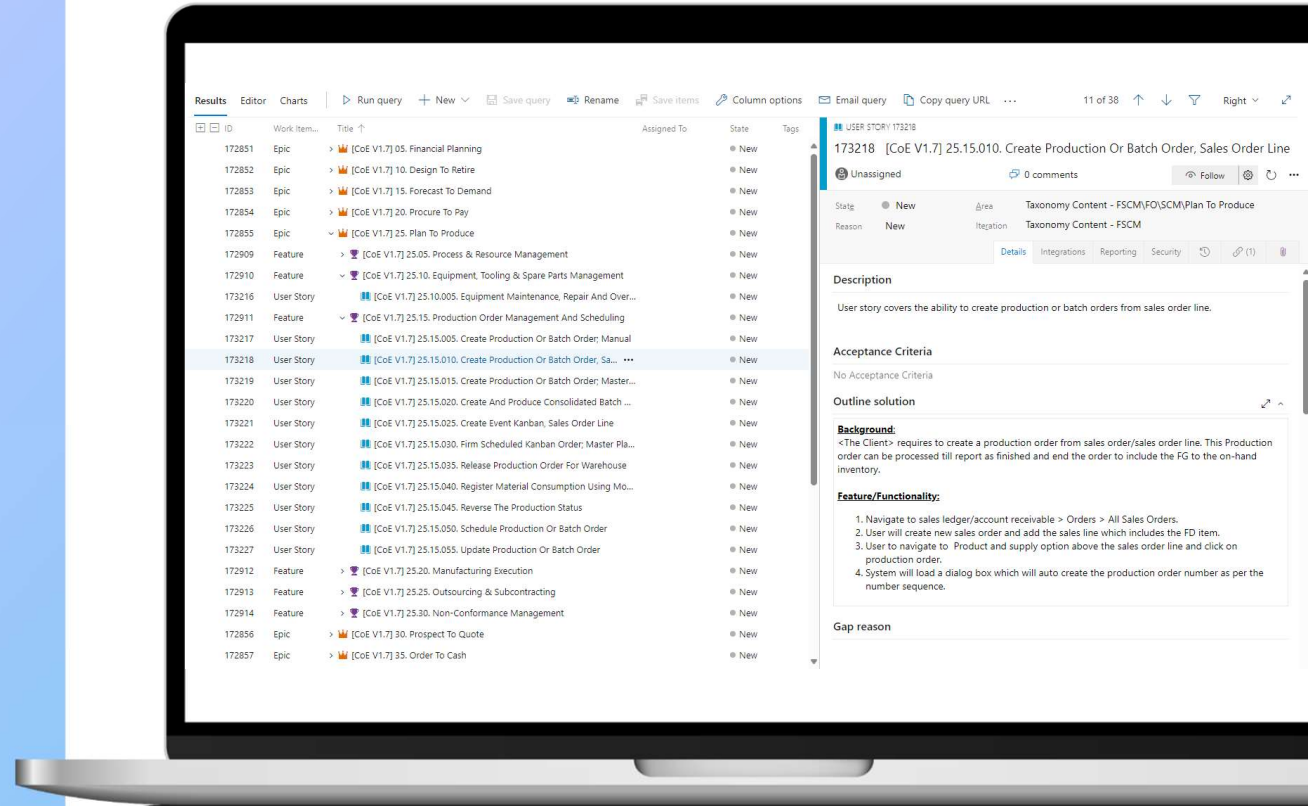
Pre-created role-based processes

Flexible to incorporate client specific requirements

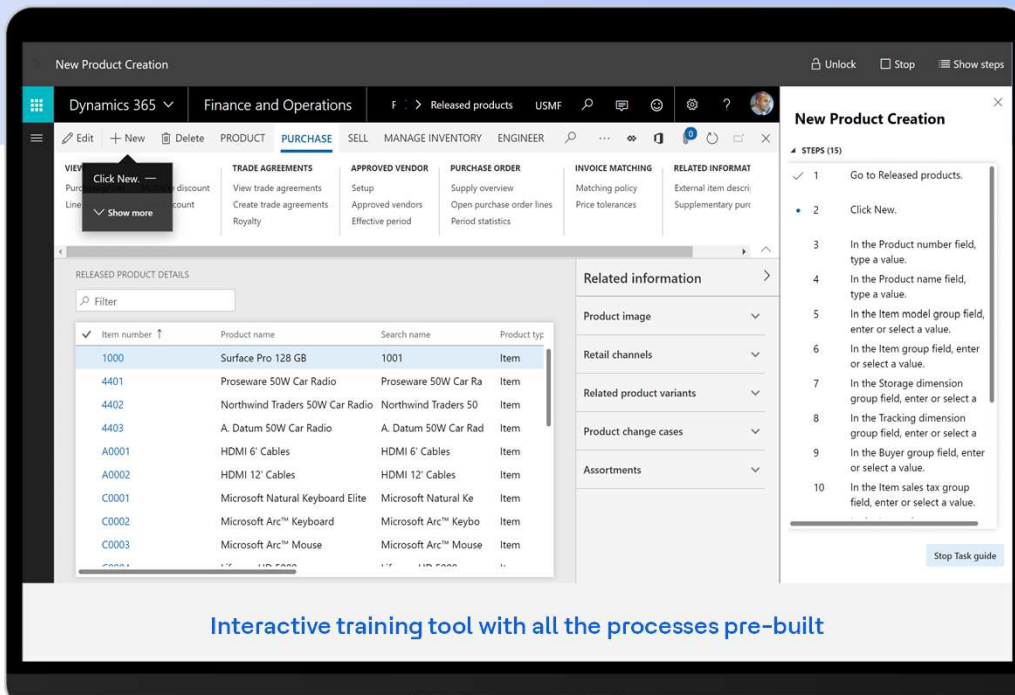


Library of pre created User stories in the DevOps Taxonomy

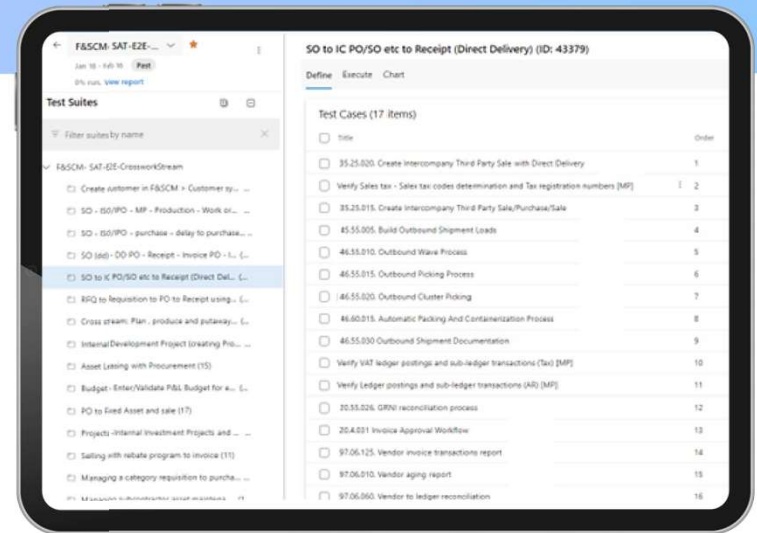
Flexible to incorporate client specific requirements



Pre-created test scripts and training content using Task Recorder



Interactive training tool with all the processes pre-built



Pre-built process testing suite

HCLTech | Supercharging
Progress™

hcltech.com