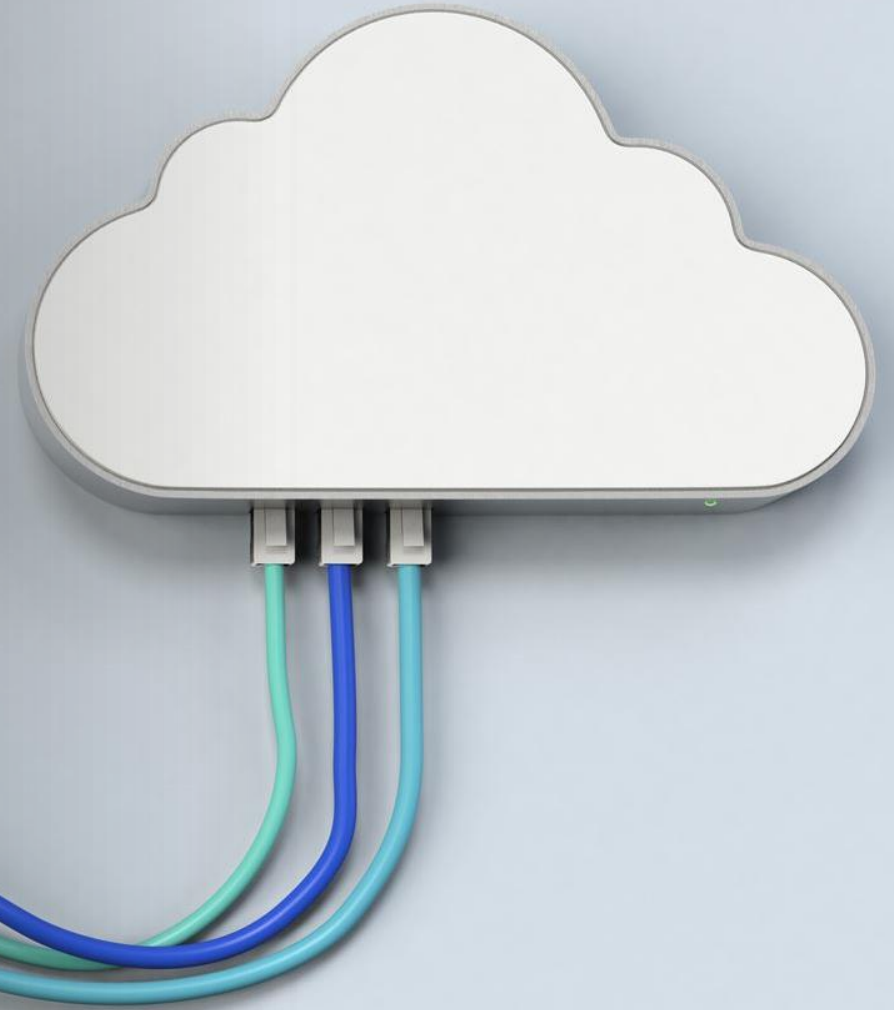


# Case Study:

SUCCESSFUL MIGRATION OF  
WORKLOADS TO AZURE CLOUD



---

Luxottica Group S.p.A



# Client Overview

## Chemical Manufacturing Leader

Luxottica Group S.p.A. is an Italian eyewear multinational corporation headquartered in Milan. Luxottica designs, manufactures, distributes, and retails its eyewear brands through its own subsidiaries. It is the largest eyewear company in the world with 90,000 employees.

## Diverse Industry Solutions

Luxottica retails its products through stores that it owns, predominantly LensCrafters, Sunglass Hut, Pearle Vision, Target Optical, and Glasses.com. It also owns EyeMed, one of the largest vision health insurance providers.

## Cloud Migration Strategy

Luxottica Corporation aims to enhance operational efficiency and scalability through strategic cloud migration to modernize its operations.

# Business Need

## Modernizing IT Infrastructure

- ❖ Luxottica Corporation wanted to modernize its IT infrastructure by migrating workloads to the cloud, enhancing efficiency.

## Improving Agility

- ❖ The migration aimed to improve business agility, allowing for quicker responses to market changes.

## Reducing Operational Costs

- ❖ Transitioning to the cloud was expected to significantly reduce operational costs compared to on-premise systems.

## Scalability on Demand

- ❖ Luxottica wanted to consume the cloud features for capacity to scale resources on demand, meeting changing business needs effectively.



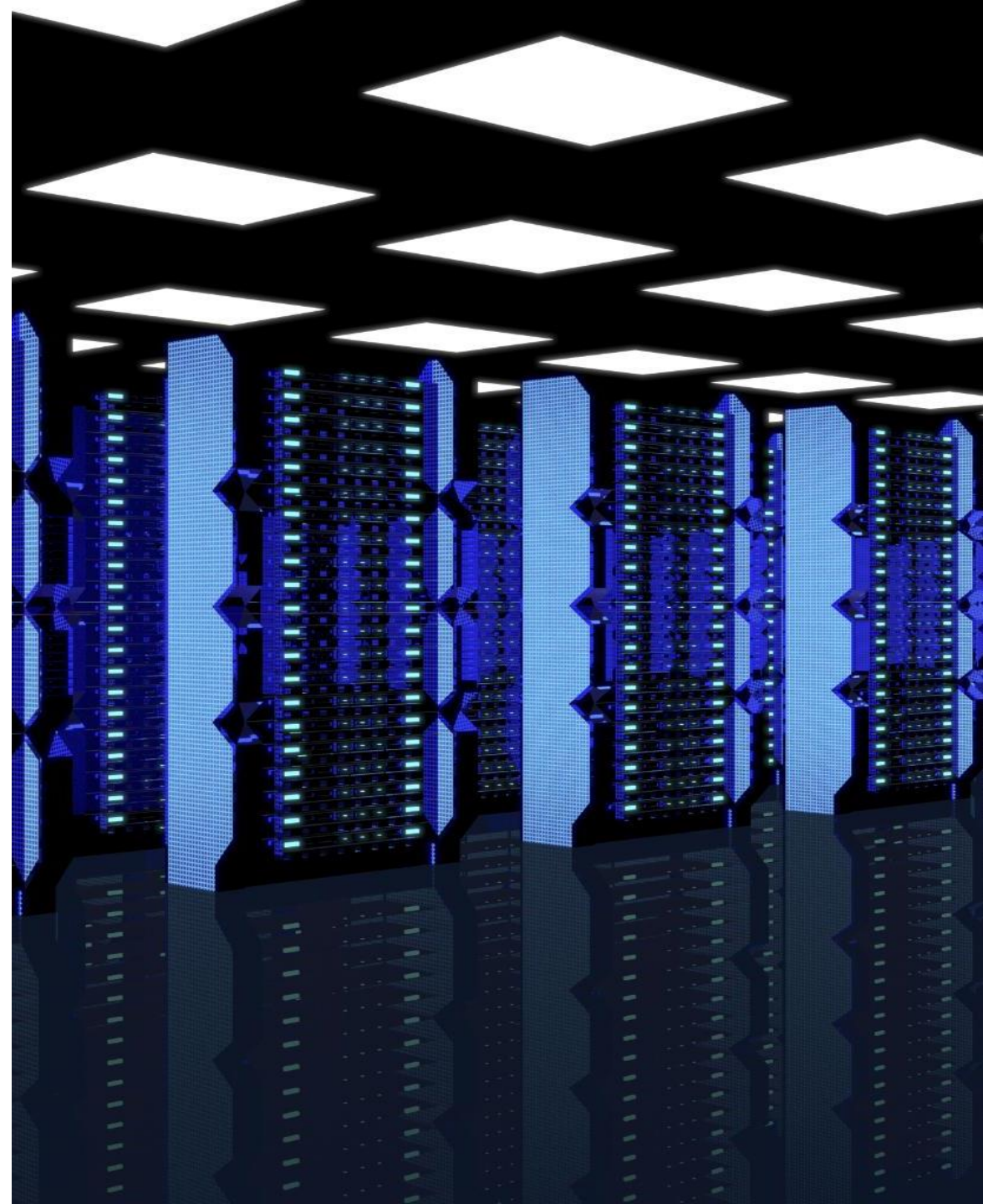
---

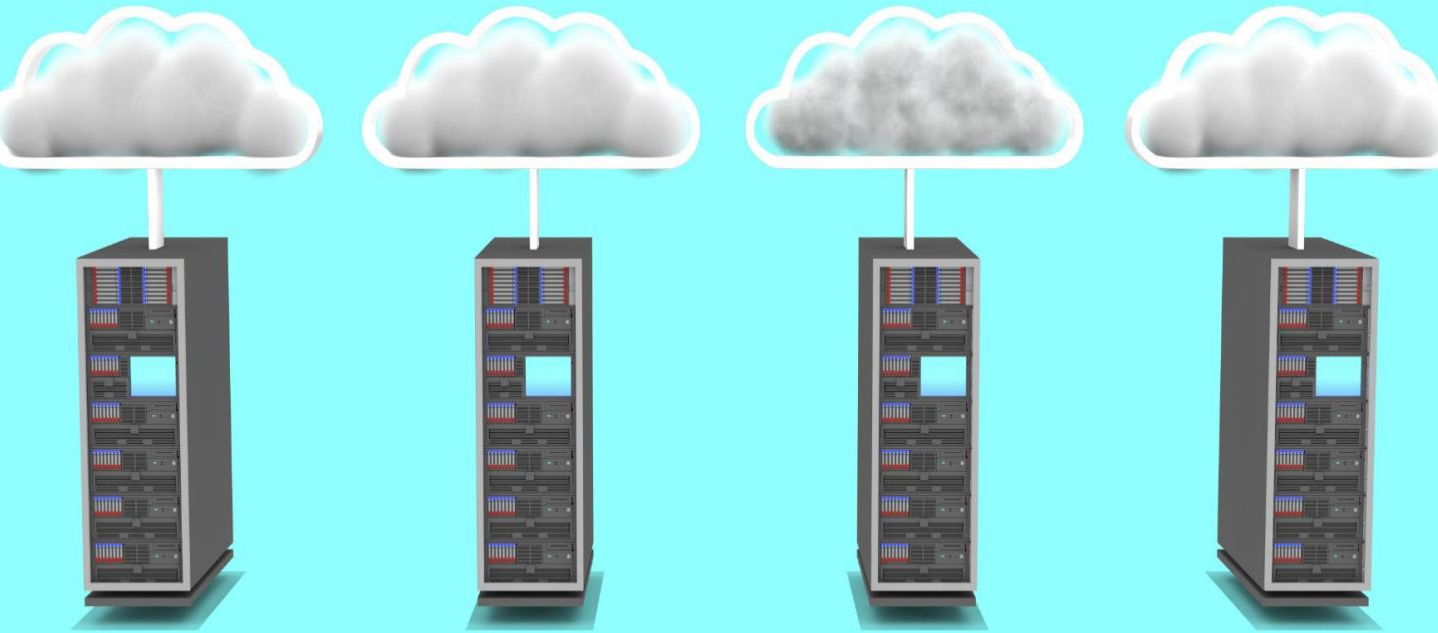
# Migration Workloads

Luxottica chose HCLTech as a Strategic Partner to help Luxottica accelerate the Cloud migration journey.

Applications	Servers
17	53

HCLTech was to create all the Azure Resources needed for Application, for Networking, Authentication & Authorization, Security Controls, Backup & Disaster Recovery and Monitoring per the Customer Cloud Standards. At the same time to make the systems are cost optimized, scalable and resilient.





# Project Summary

## Migration Overview

- ❑ The project focused on migrating a total of 147 Applications, 967 Servers, and 359 Databases.

## Strategic Cloud Partner

- ❑ HCLTech was selected as a Strategic Cloud Partner to help Luxottica accelerate the Cloud Migration Journey.

## Tools Utilized

- ❑ Key tools utilized in the migration included Azure Migrate, Azure DevOps, Terraform, and PowerShell for seamless execution.

# Challenges Faced

## Complexity of Existing Applications

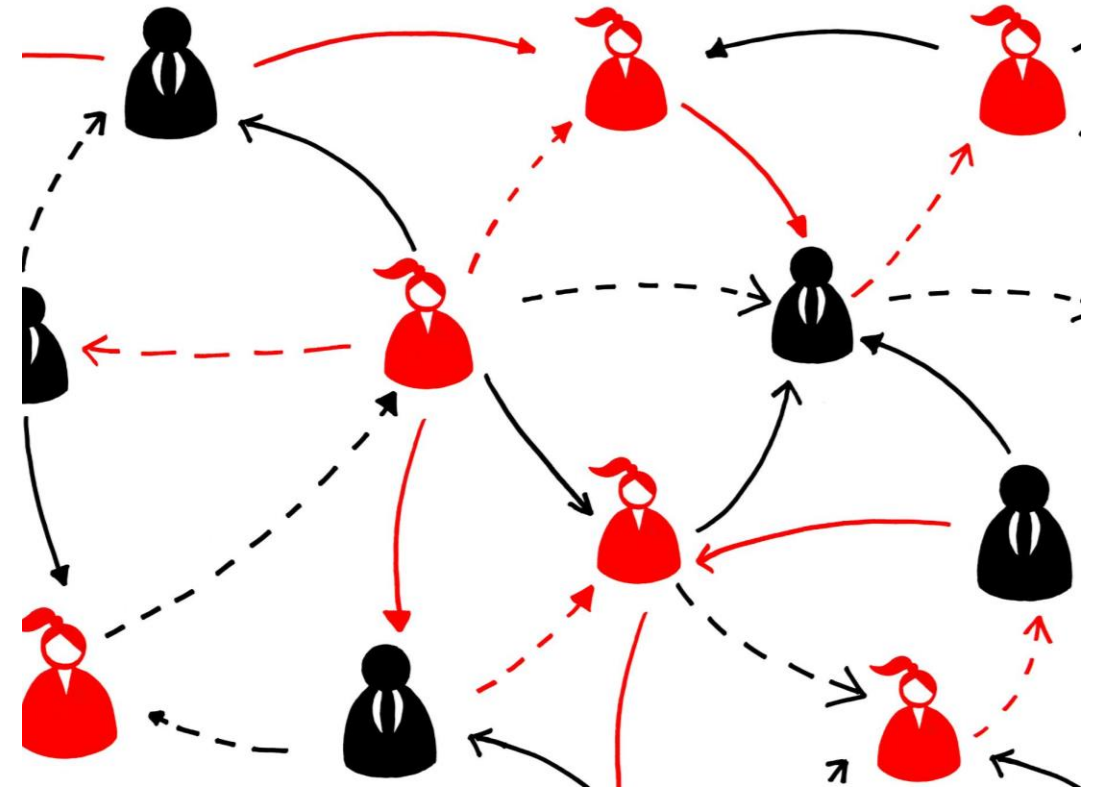
- Existing applications presented a significant challenge during migration due to their complexity and interdependencies, requiring thorough planning.

## Data Integrity Concerns

- Ensuring data integrity during migration was crucial to prevent data loss or corruption, necessitating careful validation processes.

## Minimizing Downtime

- Minimizing downtime was essential during migration to ensure business continuity, requiring effective strategies and tools.



# Solutions Implemented



## Azure Migrate

- Azure Migrate was used for thorough assessment and planning, enabling a smooth migration journey.

## Automated Migration with Azure DevOps

- Azure DevOps facilitated continuous integration and delivery pipelines, enhancing deployment speed and reliability.

## Infrastructure as Code

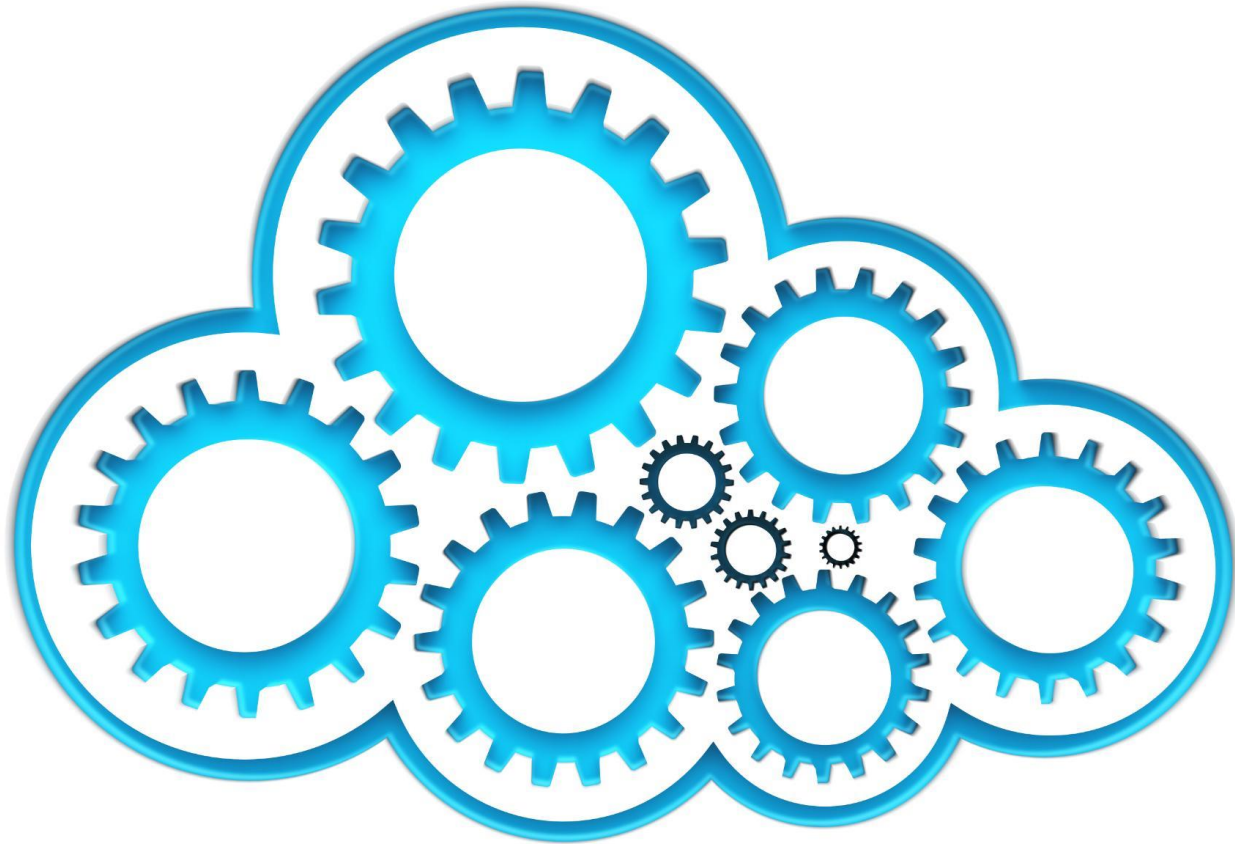
- Terraform was utilized for infrastructure as code, promoting consistency and repeatability in deployments.

## Automation with PowerShell

- PowerShell was leveraged for some of automation tasks, for streamlined operations and improving efficiency across the board.

Using these tools and following agile program management, the project was delivered successfully on time.

# Value Delivered



## Cost Savings

- ✓ Migrating to Azure led to significant cost reductions for Luxottica Corporation, optimizing their IT expenditures.

## Operational Efficiency

- ✓ The move to Azure improved operational efficiency, streamlined processes and enhanced performance across the organization.

## Enhanced Scalability

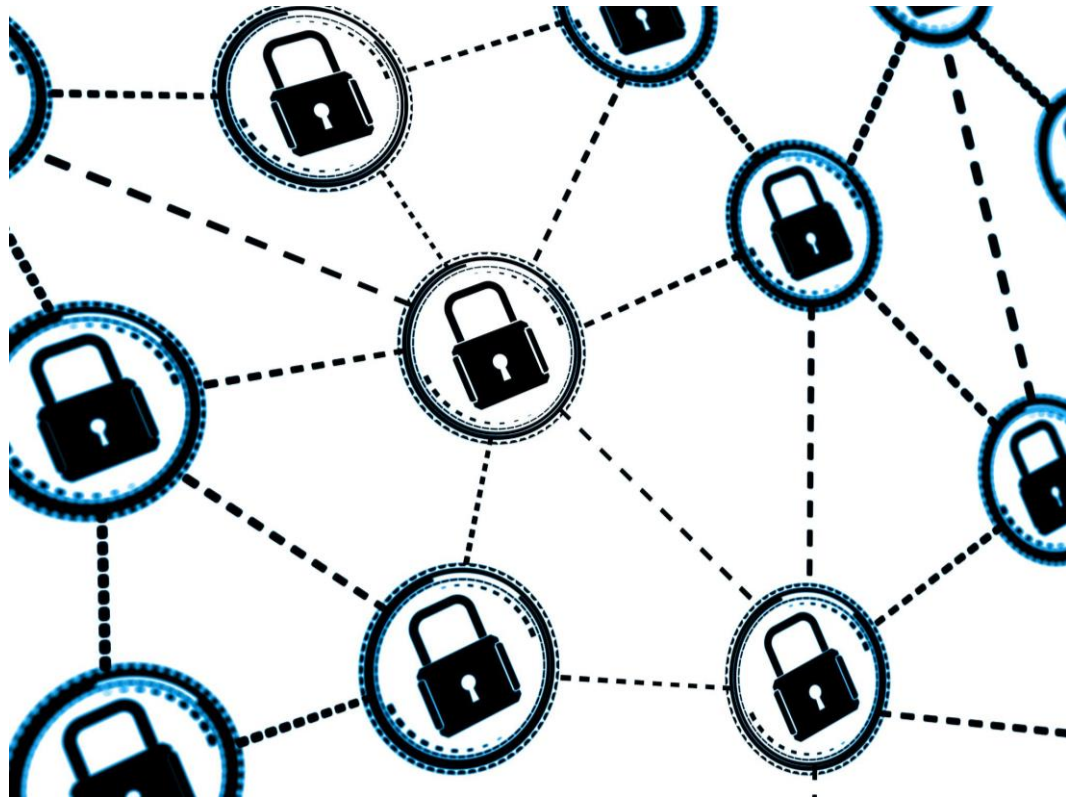
- ✓ Azure cloud helped with enhanced scalability, allowing Luxottica Corporation to adjust resources as needed effectively.

## Quicker Deployments

- ✓ The new cloud environment enabled quicker deployments, resulting in increased productivity and faster project completions.



# Impact Analysis



## Reduced IT Overheads

The migration significantly decreased IT costs, enabling Luxottica Corporation to allocate resources more effectively.

## Enhanced Security Protocols

Post-migration, enhanced security protocols have been implemented, safeguarding sensitive data and reducing vulnerability.

## Improved Compliance

Luxottica Corporation has achieved improved compliance with industry regulations, ensuring adherence and minimizing risks.

## Positioned for Innovation

With these improvements, Luxottica Corporation is now better positioned to innovate and respond to market demands swiftly.

# People and Culture

## Cloud Migration Success

Luxottica Corporation's successful migration to Azure demonstrated the potential of cloud computing for businesses seeking agility and efficiency.



## Transition

The transition involved significant cultural changes within the organization, adapting to new technologies and processes.

## Documentation, Training and Workshops

HCL facilitated documentation, training sessions and workshops, equipping staff with essential skills to manage the cloud environment.

## Continuous Learning

A culture of continuous learning was fostered, encouraging employees to adapt and grow in their roles.