



Hillrom™

**Welch Allyn®**  
RetinaVue® Care  
Delivery Model



# **SAVING VISION FOR PATIENTS LIVING WITH DIABETES STARTS WITH YOU.**

**Diabetic retinopathy is the leading cause of vision loss in working-age adults,<sup>1</sup> affecting 7.7 million people worldwide.<sup>2</sup> By making diabetic retinal exams available in primary care, you can help prevent 95% of vision loss due to diabetic retinopathy.<sup>3</sup>**

## MEET THE WELCH ALLYN RETINAVUE CARE DELIVERY MODEL.

With a simple five-minute eye exam during primary care visits, it helps you preserve the vision of your patients with diabetes while improving HEDIS® quality measures and increasing revenue across your organization.



### ACQUIRE

Choose from our portfolio of non-mydratric retinal cameras for imaging—including the RetinaVue 700 Imager, the world's most advanced handheld retinal camera.



### TRANSFER

Transmit images and manage retinal exam data by clinic and/or by patient. HIPAA-compliant, FDA-cleared RetinaVue Network software makes it easy (software plan priced per camera, per month).



### ANALYZE

Tap into professional medical services from ophthalmologists at RetinaVue, P.C., or your preferred specialist. RetinaVue, P.C. is the first tele-ophthalmology provider to receive Ambulatory Care Accreditation through The Joint Commission.



### REPORT

Receive a diagnostic report including fundus images, ICD 10 codes and a recommended referral/care plan, generally in one business day.



## Easy to use

Experience automated retina imaging in a handheld camera—featuring auto-alignment, auto-focus and auto-capture. Keep your focus on your patient, not on difficult-to-use technology.



## Made for primary care

With nonmydriatic capture through a 2.5mm pupil, the RetinaVue 700 Imager enables comfortable exams without chemical dilation. The handheld, portable device is a perfect solution for mobility across multiple locations.



## Superior image quality

Our proprietary image-quality assessment algorithm can help reduce your need for re-imaging appointments. You will get an immediate quality score on the image you capture.



## Security built into every layer

We know you need to protect both your patients and your infrastructure. That's why our HIPAA/HITECH-compliant RetinaVue Network features end-to-end encryption of data in transit and at rest, along with secure client-server authentication. The RetinaVue Network, hosted on the Microsoft® Azure™ cloud, is independently verified for security, privacy and compliance controls to give you peace of mind and help you protect what matters.



**INNOVATIVE TECHNOLOGY  
DESIGNED TO HELP YOU  
BETTER SERVE YOUR PATIENTS**



# TOP HEALTHCARE PLANS SEE THE VALUE.

**Most commercial healthcare plans provide coverage for diabetic retinal exams in primary care settings. Consult your payer partners for coding and coverage options.**

Having the RetinaVue Care Delivery Model at my office has improved our compliance with getting diabetic patients' eye exams completed. This, firstly, enhances the quality of our practice of medicine at my practice, and improves our compliance with quality reporting. The patients love having the information reported back to them in under a day. It has become part of the fabric of my office workflow.

**Jeffrey Hyman, MD, FACP,  
Medical Director, University  
Physicians Group at Northwell  
Health Physician Partners**

Accurately documenting chronic conditions such as diabetes and its complications helps inform care planning, appropriate coverage and quality performance.<sup>4</sup>

The NCQA® HEDIS® quality measure for annual diabetic retinal exams (NQF #0055) is included in Medicare Advantage Star Ratings and CMS Quality Payment Program measures. When patients have their eyes examined during a routine primary care office visit, your organization can achieve up to 90% documented compliance in 12 months.<sup>5</sup>

## SEAMLESS CONNECTIVITY IS THE FUTURE OF HEALTHCARE.

**Achieve a secure transfer of encrypted retinal images and manage your exam data with the award-winning, HIPAA-compliant and FDA-cleared RetinaVue Network software.**

Our RetinaVue Network offers software applications to meet your workflow and administrative needs. It includes comprehensive population health management and quality reporting tools to help you manage your retinal exam data.

To streamline documentation, fully integrated, bi-directional interfaces with EMRs including Allscripts®, athenahealth®, Cerner®, Epic®, NextGen® and many others are available to you. Place retinal exam orders and automatically access diagnostic reports from your EMR—we designed this to integrate seamlessly into your clinical workflow.

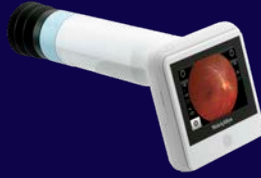


# TOGETHER, WE HAVE THE POWER TO HELP PREVENT DIABETIC RETINOPATHY AS A LEADING CAUSE OF BLINDNESS.



**Welch Allyn  
RetinaVue 700 Imager**

RV700-B\*



**Welch Allyn  
RetinaVue 100 Imager**

RV100-B\*



**CenterVue DRS**

723468\*

For more information, please visit [retinavue.com](http://retinavue.com).



**Hillrom™**

[hillrom.com](http://hillrom.com)

4341 State Street Road, Skaneateles Falls, NY 13153

#### References

<sup>1</sup> Centers for Disease Control and Prevention. Common Eye Disorders. Vision Health Initiative (VHI). HYPERLINK "<http://www.cdc.gov/visionhealth/basics/ced/index.html>" [www.cdc.gov/visionhealth/basics/ced/index.html](http://www.cdc.gov/visionhealth/basics/ced/index.html). Published September 29, 2015. Accessed June 18, 2019.

<sup>2</sup> National Eye Institute. Eye Disease Statistics. [https://nei.nih.gov/sites/default/files/nei-pdfs/NEI\\_Eye\\_Disease\\_Statistics\\_Factsheet\\_2014\\_V10.pdf](https://nei.nih.gov/sites/default/files/nei-pdfs/NEI_Eye_Disease_Statistics_Factsheet_2014_V10.pdf). Published March 2014. Accessed June 18, 2019.

<sup>3</sup> National Eye Institute. Facts About Diabetic Eye Disease. <https://nei.nih.gov/health/diabetic/retinopathy>. Published September 2015. Accessed June 18, 2019.

<sup>4</sup> Triangle Medical Group. CMS HCC Risk Adjustment. <https://docplayer.net/54439940-Cms-hcc-risk-adjustment-robert-resnik-md-mba.html>. Accessed June 18, 2019.

<sup>5</sup> Smith DM, Moore LG. The role of HCCs in a value-based payment system. *Healthc Financ Manage*. 2017 Oct. 1-7.

\* RetinaVue Network software is required. System requirements: Windows 7, Windows 8.1, Windows 10 on latest SP; RAM 2 GB min; CPU 2 GHz or equivalent; 150 MB free HDD space; high-speed internet connection; USB port (for RV700-B and RV100-B); Ethernet port (for 723427)

Hillrom reserves the right to make changes without notice in design, specifications and models. The only warranty Hillrom makes is the express written warranty extended on the sale or rental of its products.

© 2019 Welch Allyn. ALL RIGHTS RESERVED. MC15955 80022626 Ver D 2019-06