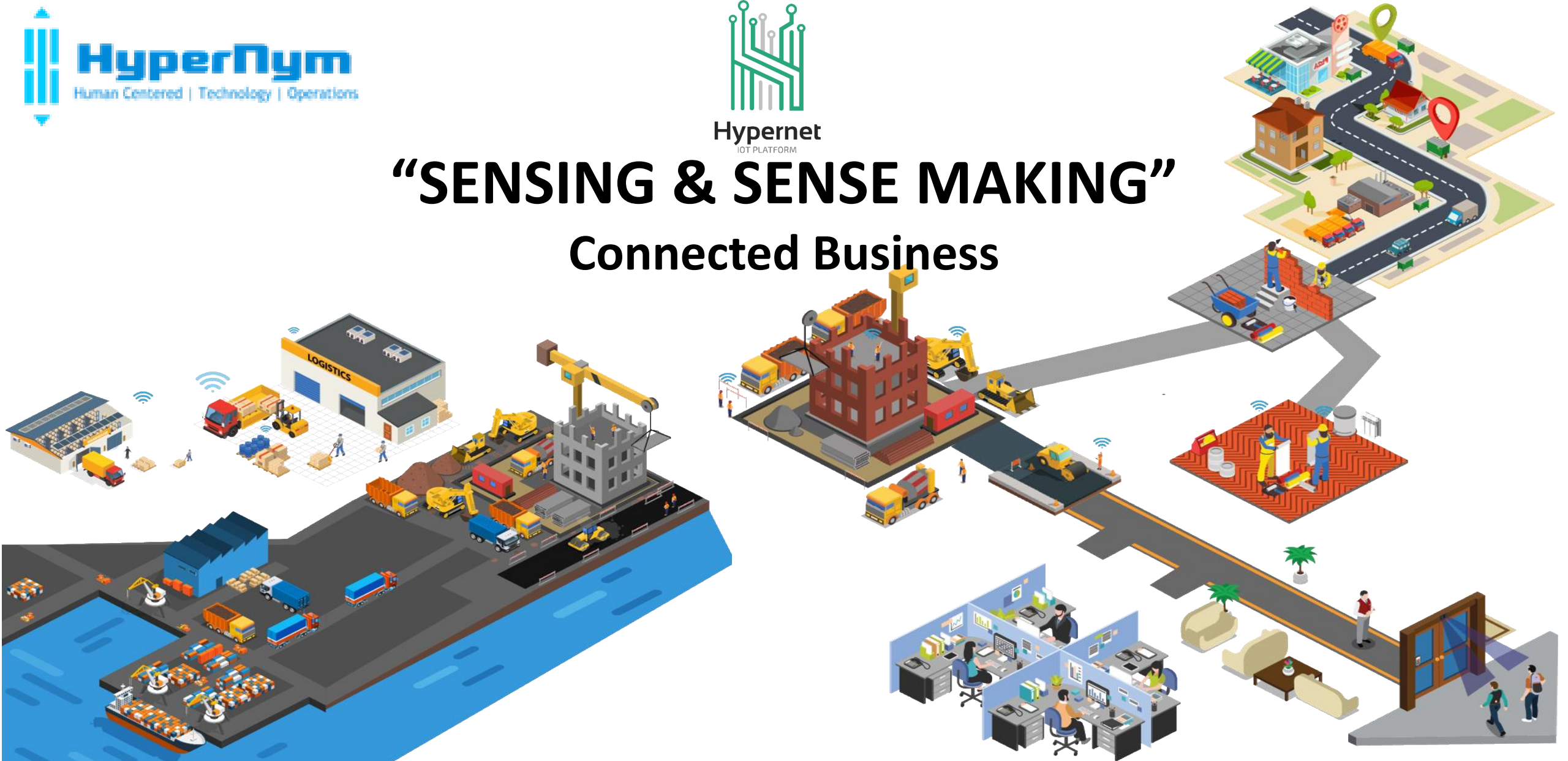


# “SENSING & SENSE MAKING”

## Connected Business



**A Data & IOT Company**





## Hypernet

Monitoring

Controlling

Processing

Data Analysis



**ASSET MANAGEMENT**  
(AUTOMATED ASSET TRACKING)



**WASTE MANAGEMENT**



**Vessel Management**  
(VESSEL TRACKING/  
VESSEL HEALTH TRACK)



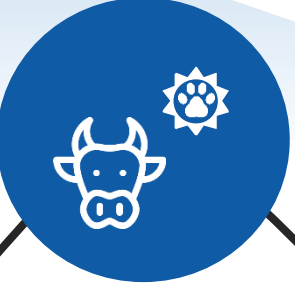
**VEHICLES**  
(AUTONOMOUS VEHICLES/  
CONDITION BASED MAINTENANCE)



**HOME/COMMERCIAL BUILDINGS**  
(POWER MONITORING/  
CLONE AUTOMATION)



**SITE OPERATIONS MANAGEMNET**



**Animals**  
(ACTIVITY MONITORING/  
HEALTH TRACK)




**HEALTH & FITNESS**



Hypernet

## Logistics

- Fleet Management
- Fleet Analytics
- Waste Management
- B2B Deliveries
- B2C Deliveries
- Courier Services
- Frozen Food Deliveries
- Order Analytics
- Vessel Management
- Transport Management



Hypernet

## Asset Management

- Indoor Asset Management
- Asset Life-Cycle Monitoring



Hypernet

## Performance Management

- Sales Force Management
- Remote Worker Construction



Hypernet

## Security

- Smart Access Management
- Smart Building Management
- Video Coverage
- Parents Eye (Children Monitoring)

# Microsoft Co-Sell Ready

Apps > Internet of Logistics - Smart Fleet Management



## Internet of Logistics - Smart Fleet Management

hypernymfzllc-4553301

Overview | Reviews

CONTACT ME

SAVE FOR LAT...

Products  
Web Apps  
Publisher  
hypernymfzllc-4553301

Acquire Using  
Work or school account

Version  
v1.7

Categories  
Analytics  
Internet of things

Industries  
Distribution

Support  
Support  
Help

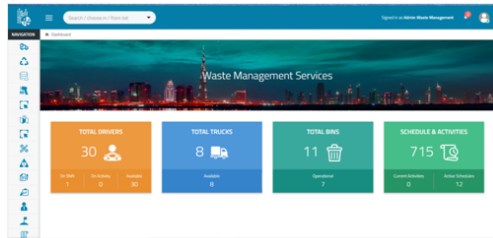
Legal  
License Agreement  
Privacy Policy

iol-001 provides complete insight into logistics operations via sensors, AI & Machine learning..

Internet of Logistics is the complete insight into logistics operations, getting data via IoT sensor on Azure, using Artificial intelligence and Machine Learning Algorithms, providing complete route optimisation, driver performance and behaviour, vehicle performance and behaviour, in dept drill down for daily consumption, penalties, and future planning for expenses for usage, resources as well for maintenance and replacement.

Learn more

[Flyer - Internet of Logistics / Fleet](#)



Apps > Internet of Power



## Internet of Power

hypernymfzllc-4553301

Overview | Reviews

CONTACT ME

SAVE FOR LAT...

Products  
Web Apps  
Publisher  
hypernymfzllc-4553301

Acquire Using  
Work or school account

Version  
v1

Categories  
Artificial intelligence  
Customer service  
Internet of things

Industries  
Manufacturing  
Retail

Support  
Support  
Help

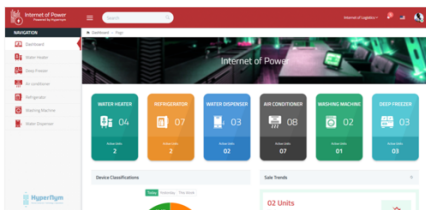
Legal  
License Agreement  
Privacy Policy

Internet of Power Solution provided the complete control and management of all electronic devices.

Internet of Power Solution, provides not only control and management of electronic devices, but also give in-depth Knowledge of power consumption and control over consumption with Artificial intelligence and Machine Learning. It provide a dashboard to manage multiple devices in multiple categories, installed in difference regions worldwide.

Learn more

[Internet of Power - Solution Information](#)



Apps > IOL - Smart Waste Management



## IOL - Smart Waste Management

hypernymfzllc-4553301

Overview | Reviews

CONTACT ME

SAVE FOR LAT...

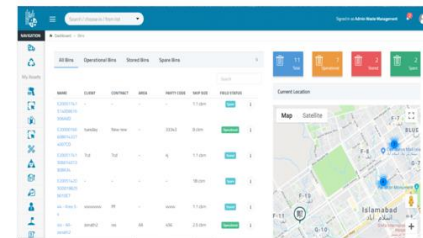
Products  
Web Apps  
Publisher  
hypernymfzllc-4553301

Smart Waste Management using IOT Technology with Artificial Intelligence & Machine Learning

Internet of Waste Management by HyperNym is a complete platform which helps waste management companies to manage not only their Fleets and Waste Bins but also integrate with their client management and billing solution. With the help of sensors & gateways we provide you real-time monitoring, territory allocation & an analytical engine to help you increase operational efficiency & reduce OPEX by curbing penalties incurred via generating timely alerts, recommending best pickup routes, automating everyday operations & more. This State of Art solution is on Microsoft Azure and use Artificial intelligence and Machine Learning to provide in-depth analysis and co-relations to give deep insight of operations.

Learn more

[WM Datasheet](#)  
[Smart Waste Management - Case Study](#)





# Our Customers





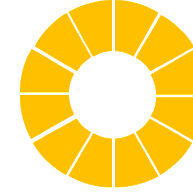
Co-Sell Ready

# Fleet Management

Achieve **Operational Efficiency** and **reduce OPEX**

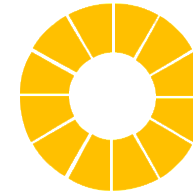
- Full visibility over Fleet to achieve
- **Route Optimization** & **Autonomous Job Scheduling**
- **Driver Behavior** & **Driving Analytics**.

Density Sensor of the liquid



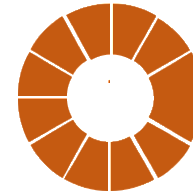
Humidity level/ Level of the Liquid

OBD-II (On-board diagnostics) metric



Real-time location of the vehicle

Latch status of the vehicle



Temperature of the Liquid



# Fleet Management







# Waste Management

Pickup Route Recommendation



Automatic Job Assignment



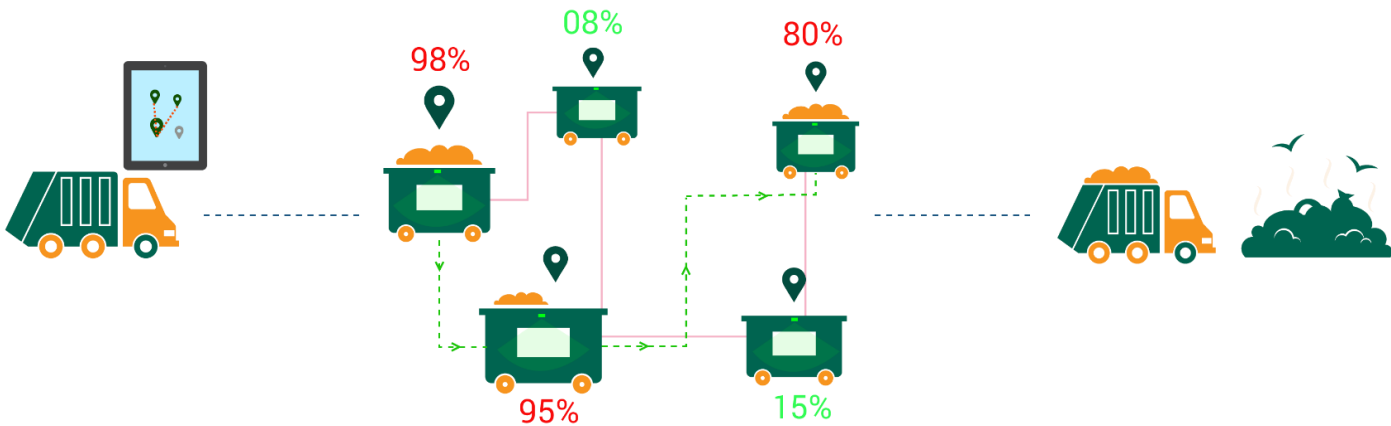
Territory Assignment



Real-Time Monitoring & Alert Generation



Bin Level & Weight Sensors



Dashboard - Bins

Search / choose in / from list

Signed in as Admin Hypernet

1651 Total 1649 Operational 2 Stored 0 Spare

NAME	CLIENT	CONTRACT	AREA	PARTY CODE	SKIP SIZE	ACTIVITY STATUS
E200001784	CITY STAR	1831	AL QUOZ	C1216	5 cdm	Active
1502170590	RESTAURANT					
DA1F						
FIELD STATUS	LAST UPDATED	LAST COLLECTION	RECORD STATUS			
Operational	-	-	Active			
E200517415	SHELFCO	2101	AL QUOZ -	S1651	1.1 cdm	Active
1401950400	METAL INCL.		1.1 BIN			
EBBE						
E200001666	LEGEND	13278	QUISAH	L03425	2.5 cdm	Active
0900692010	DRAGON		(DUBAI			
473A	BUILDING		RESIDENCE			
	MAINTENAN		OASIS)			
	CE					
E200517415	LEGEND	13278	QUISAH	L03425	2.5 cdm	Active
1401612550	DRAGON		(DUBAI			
1394	BUILDING		RESIDENCE			
	MAINTENAN		OASIS)			
	CE					
E200001784	DUBAI INTL	13570	BINJUMA 1 -	DS46	2.5 cdm	Active
1500831280	REAL ESTATE		AL NADHA			
97C4						
E200517415	DUBAI INTL	13570	BINJUMA 1 -	DS46	2.5 cdm	Active
1400860730	REAL ESTATE		AL NADHA			

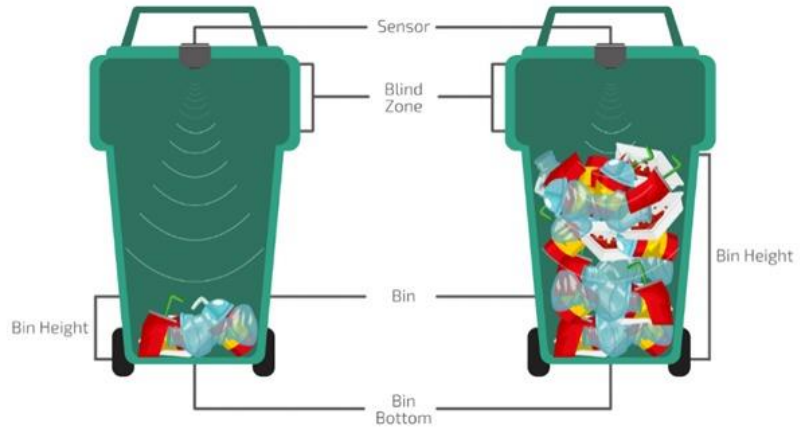
Current Location

Map Satellite

United Arab Emirates

# Waste Management

## Real Time Bin Waste Monitoring



## Critical Waste Collection



## Operational Insights



# Figures After Using Hypernet Waste Management Solution

Diesel consumption deduction by 15% - which calculated by how many gallon consumed compare to 1 AED revenue.

Km Distance travelled reduction by 15% - how many Km travelled to book 1 AED revenue.

Fleet utilization increased 10% - the unitization capacity occupied before going to the landfill.

Sales growth rate increase 10% annually.



## Smart Appliance Controlling

Real-Time Appliance  
Controlling

Appliance Power  
Consumption

Schedule Based  
Controlling

Appliance Failure Prediction







# Other Use-cases

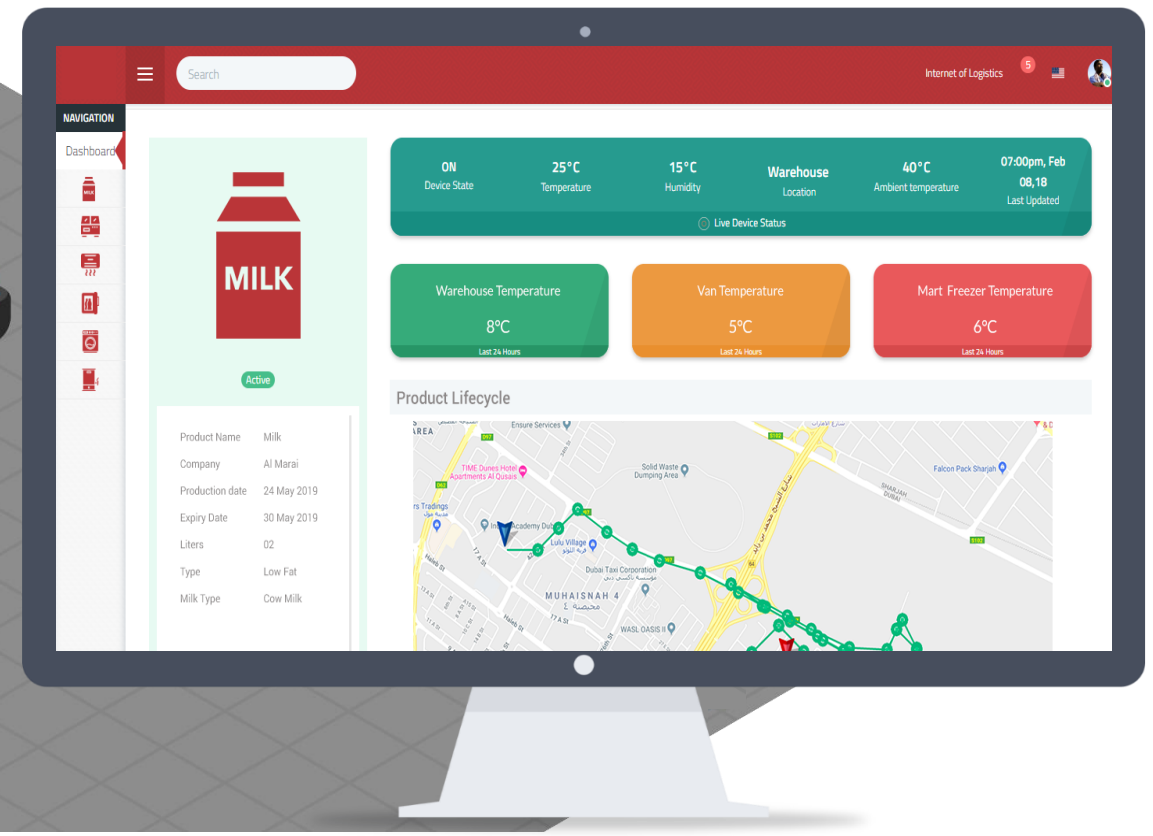
# Frozen Food Deliveries

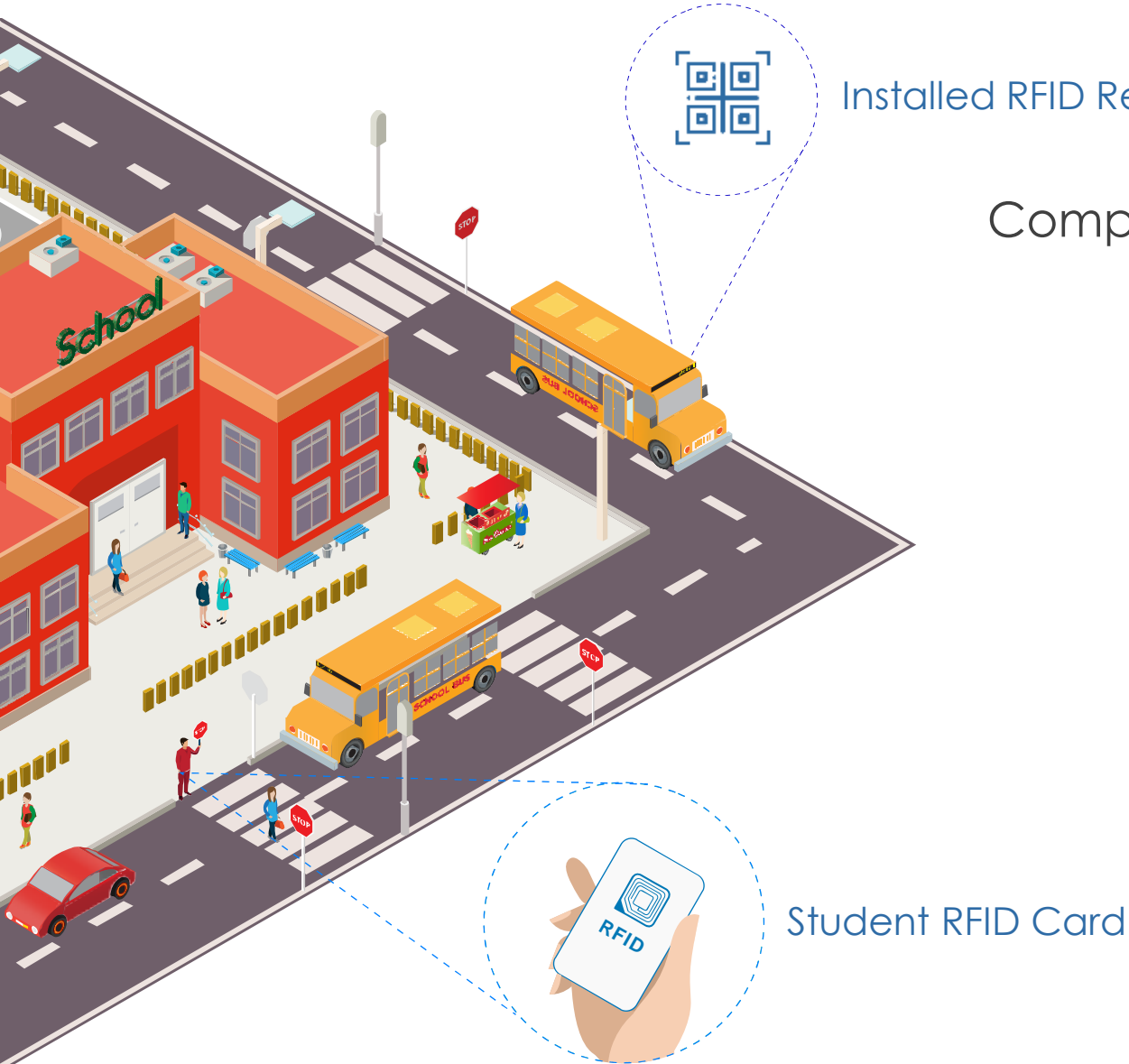
 Temperature Sensing

 Humidity Detection

 Analytics Depiction

 Real Time Alerts





Installed RFID Reader

## Completely Automated **Smart School Transport System**

- ✓ **Live Location & ETA** of arriving bus
- ✓ Bus Arrival **Notifications**
- ✓ **Notifications** of child boarding/leaving a Bus
- ✓ **Update** Pickup/Drop-off Locations
- ✓ Driving **Behavior Violation** Alerts

# Smart Entrance Access Identification

## Attendance Tracking

- Our solution lets you perform [Optimal Site Zoning](#) & [Track Attendance](#) based on workers location in zones.
- Real-time Location of each worker is checked to see if employee is present in the zone where he is supposed to be working.



Long Detection Range

Simultaneous Personnel Detection

In Premises Time Logging

Digital Attendance Management

Integration with Smart Door Locks



# Smart Building

- Digital Security Entrance
- RFID based Entrance Cards
- 24/7 CCTV Monitoring
- Real-Time Crowd Monitoring
- Access Control





# Asset Management

Accurate Asset Location

Smart Asset Segregation

Overflow/Underflow Predictions

Intelligent Space Allocation

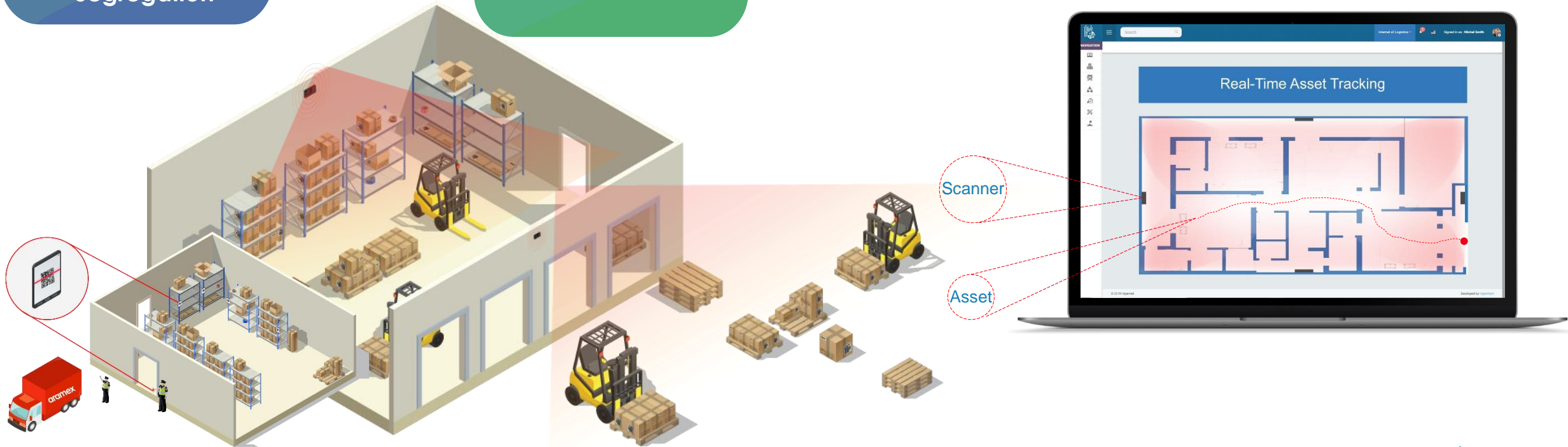
Deadline Alerts

Inventory Management

Environment Monitoring

Assets Segregation

Assets Expiry

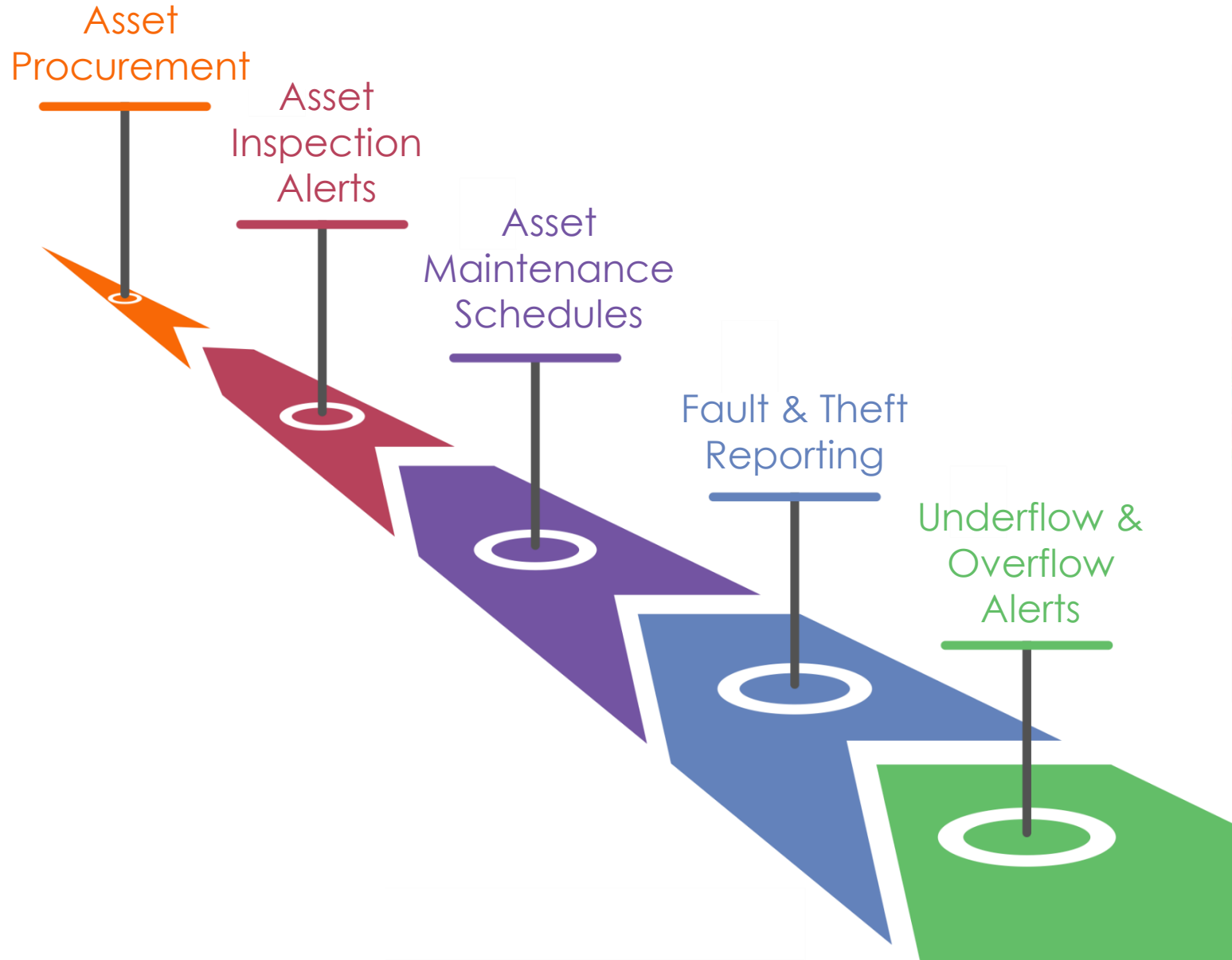


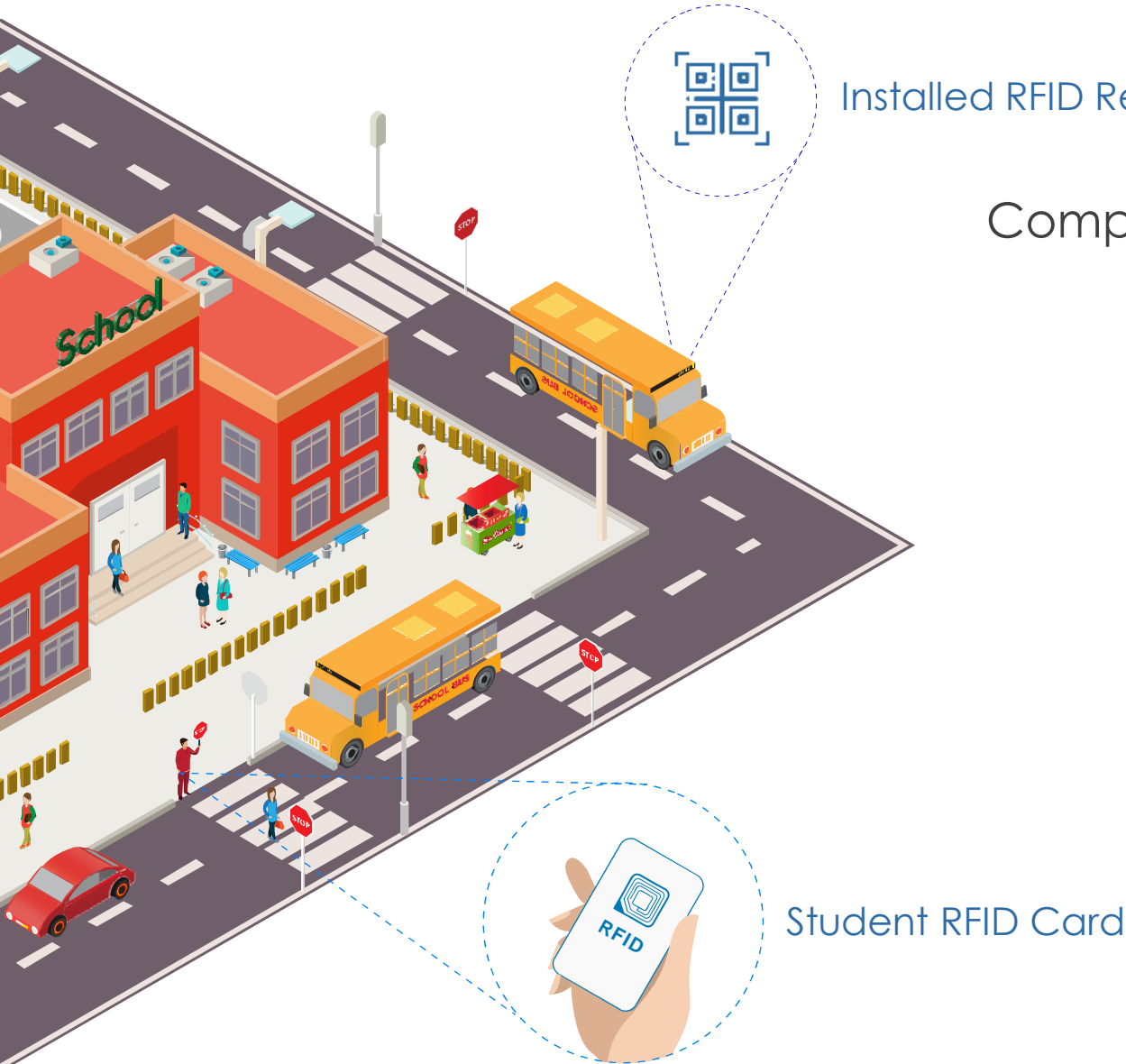
# WareHouse Asset Management

- Assets Tracking (Warehouse & in-transit).
- Correlation of Environmental Parameters with Type of Assets to generate alerts.
- Asset Clustering for better visibility of same type of assets at a single place.



# Asset Lifecycle Monitoring





Installed RFID Reader

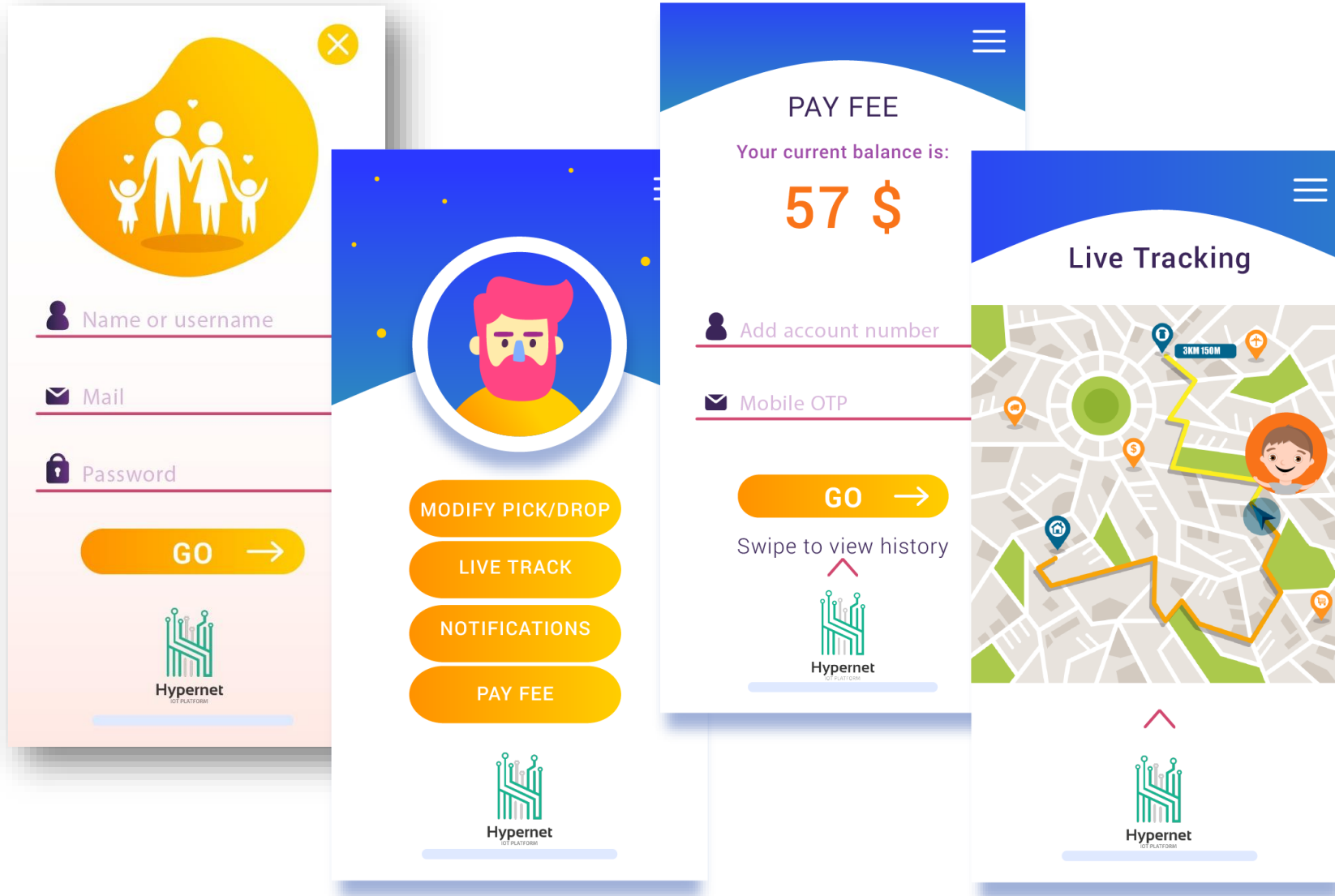
## Completely Automated **Smart School Transport System**

- ✓ **Live Location & ETA** of arriving bus
- ✓ Bus Arrival **Notifications**
- ✓ **Notifications** of child boarding/leaving a Bus
- ✓ **Update** Pickup/Drop-off Locations
- ✓ Driving **Behavior Violation** Alerts

## Route Schedule & Violation Alerts







## Parents Mobile App

- 01 Children Registration
- 02 Bus Fee Payment
- 03 Pick-up/Drop-off Schedules
- 04 Bus Arrival Notifications
- 05 Attendance/Absence Alerts
- 06 School Announcements

# Vessel Management

 Accurate Sea Freight Tracking

 Increased visibility on arriving lots

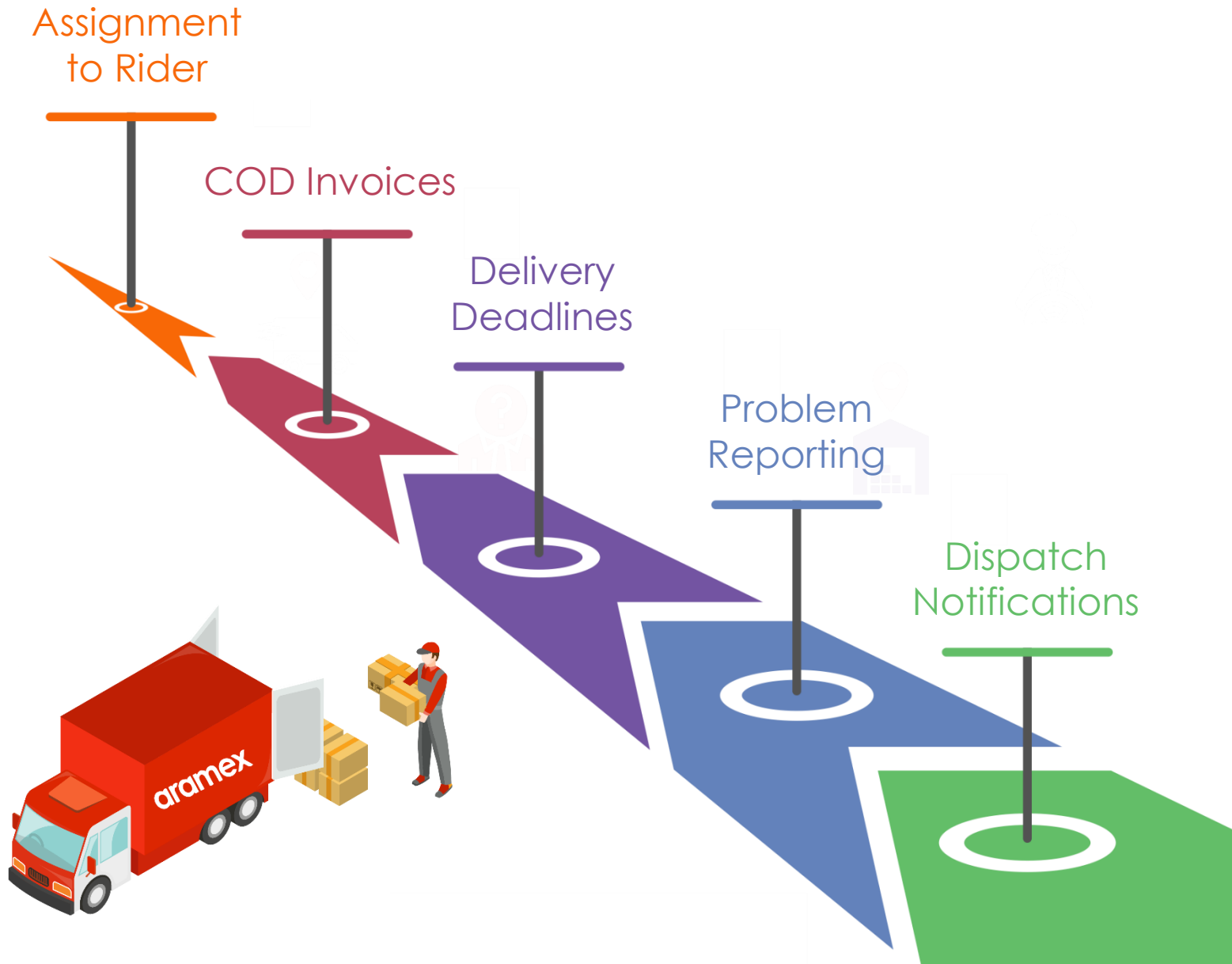
 Real-Time Track of Asset within Mobile Entity

 Geo Fencing & Asset Management

 Accurate Productivity Analysis



# Courier Services



## Schedule Consignment X

Date

Time

Driver

Truck

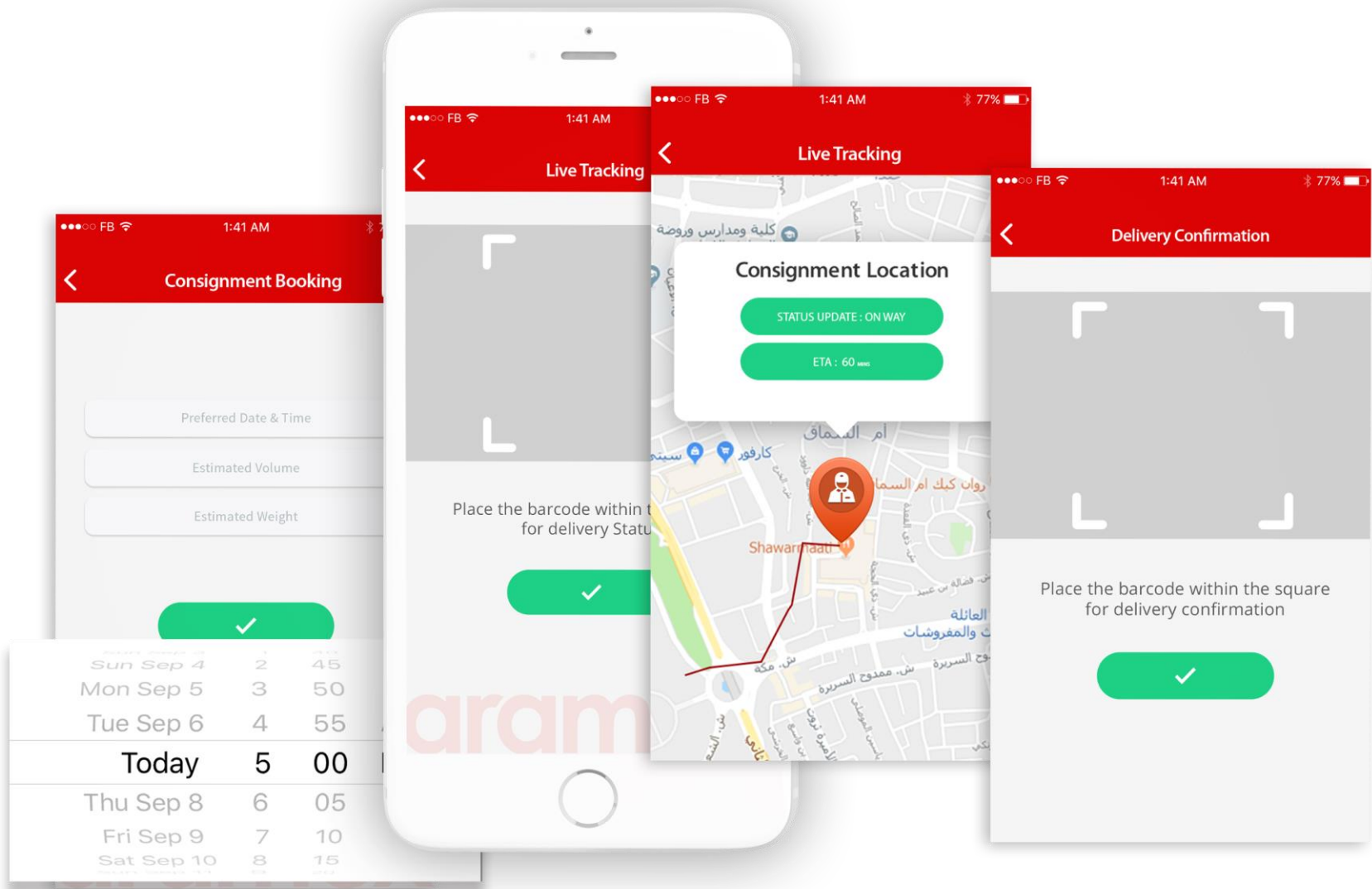
Send to

Warehouse  Customer

City

Warehouse

# B2C – End Customers / Consumers



Consignment Booking

Live Tracking

Delivery Confirmations

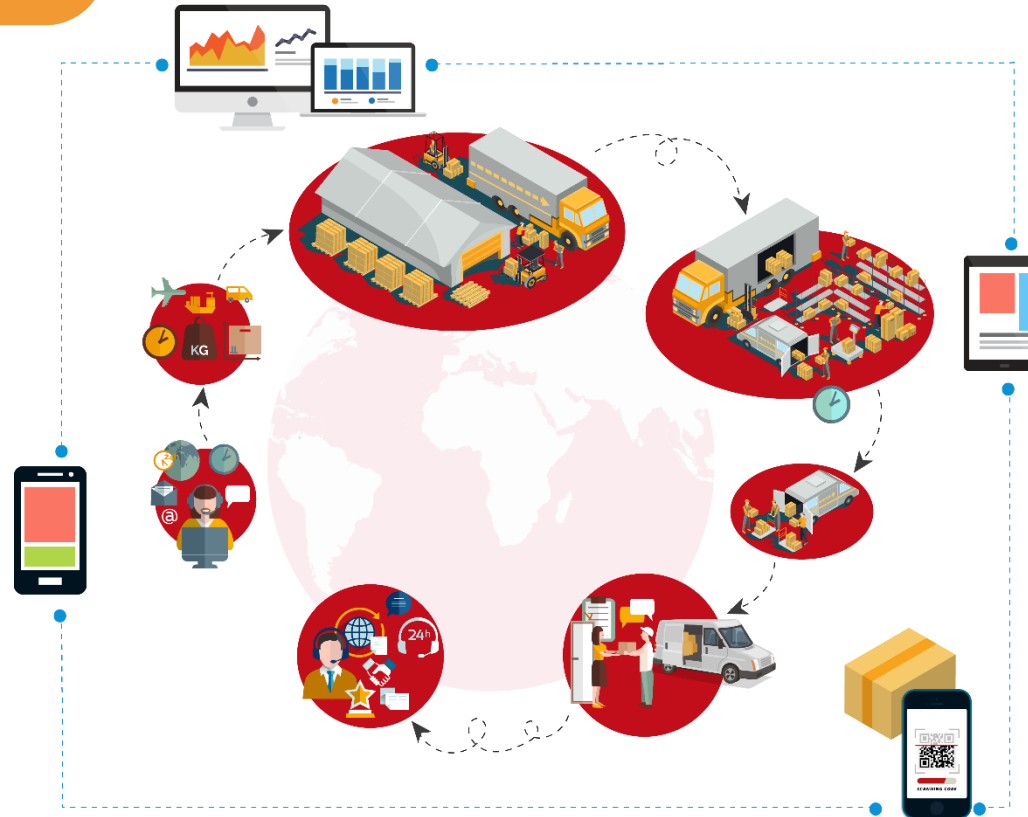
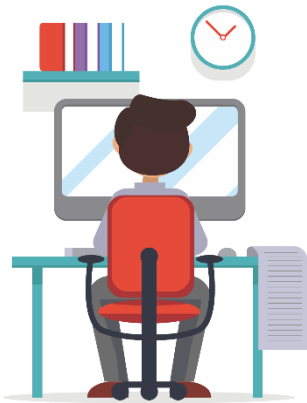


# B2B- Distribution and Deliveries to Business

Web Form/App Booking

Bulk Upload

API Integration



Consignment Tagged with QR Code

Consignment Details associated with QR

Labels (Priority, COD etc.) printed with tag

Copy of Tag shared with Customer

**Remote Pickup Request**  
(Merchandise Business etc.)

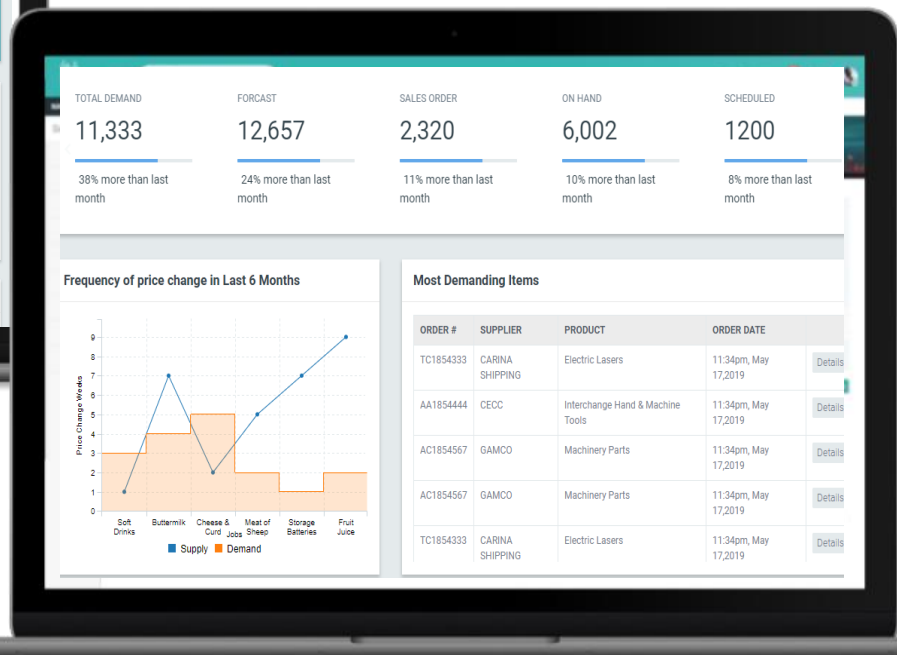


# Order Analytics from B2C Apps.

## Main Dashboard

## Buyer Order Logs

## Orders Listing



### Most Demanding Customers

CUSTOMER	ORDER STATUS	ORDER DATE
GEMCO	Completed	May 26, 2019
CARINA SHIPPING	Pending	May 12, 2019
CECC	Backordered	May 13, 2019
GEMCO	Completed	May 26, 2019
CARINA SHIPPING	Completed	May 12, 2019
CECC	Completed	May 13, 2019
GEMCO	Completed	May 26, 2019
CARINA SHIPPING	Completed	May 12, 2019

- Orders request received from buyers
- Buyers order details
- Order status

- Most Demanding Products
- Order Demand Variation
- Price variation based on Time and Product

# Field Force Performance Management

- Workforce **Productivity** Analysis
- **Activity** Analysis
- **Health** Monitoring
- **Attendance** Management
- Customized **Geofencing**
- **Resources** Analytics



Hypernet Smart Watch

 **BLE** Variant

 **Cellular** Variant

 In-Built **GPS** Tracker

 **Wi-fi** Addon

 Prolong **Battery** Backup



Plug in like REST API to integrate with your systems seamlessly

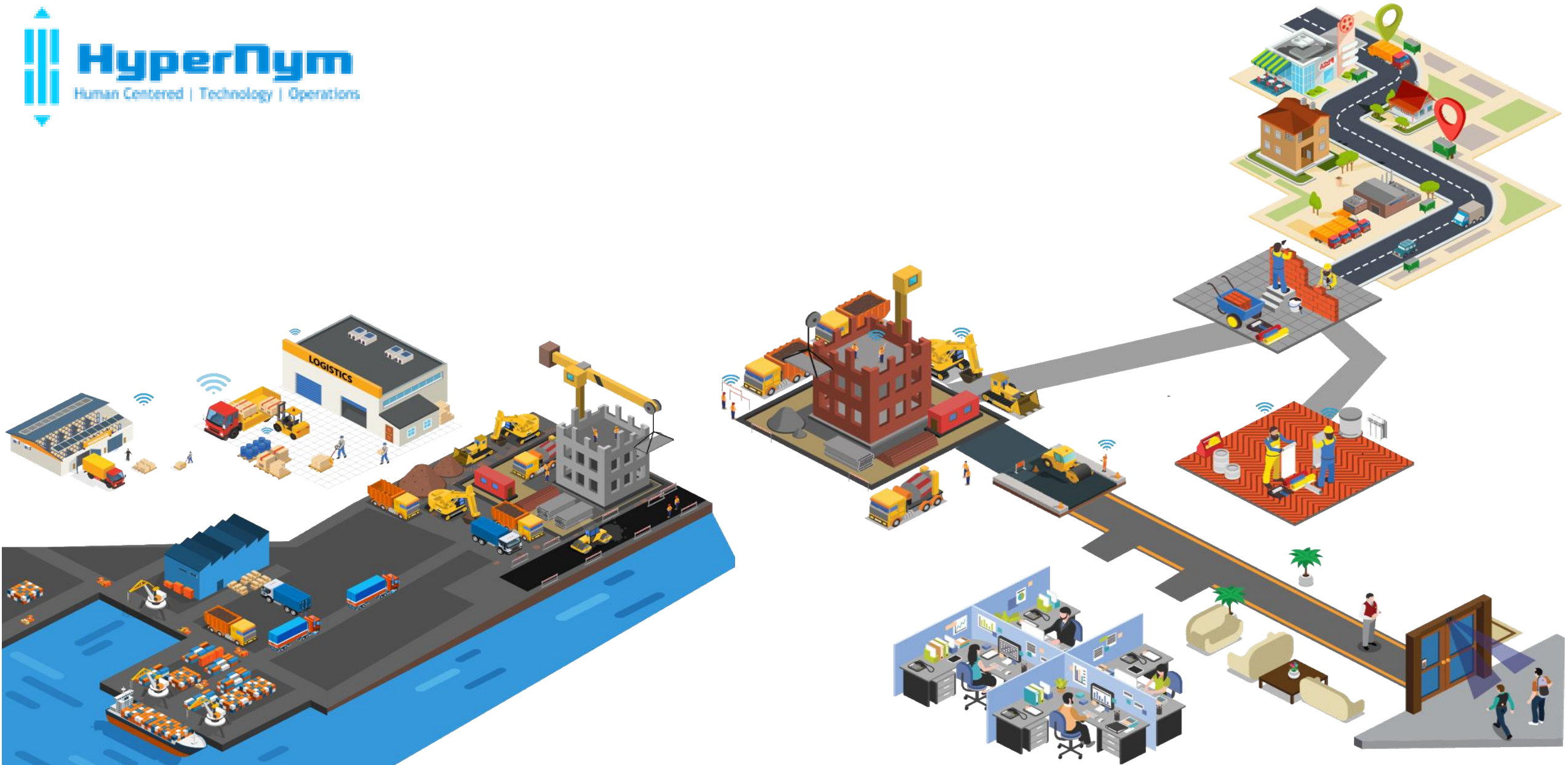
Comprehensive report generation for all your Things



Rich API with secure end-points over SSL

CSV downloadable real time and persistent data

Real time data points



**A Data & IOT Company**

