

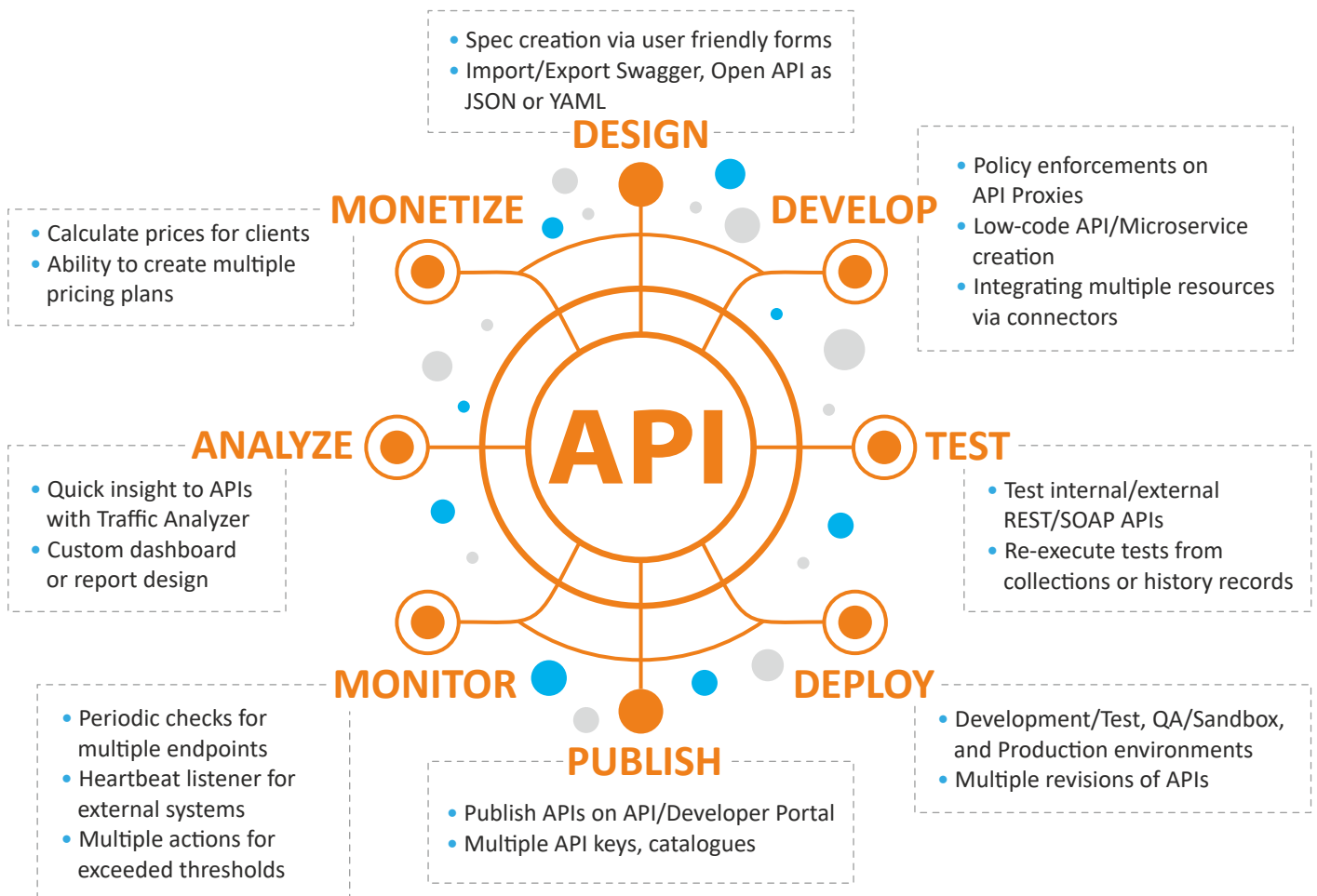
# A Complete API Management Platform

Easy

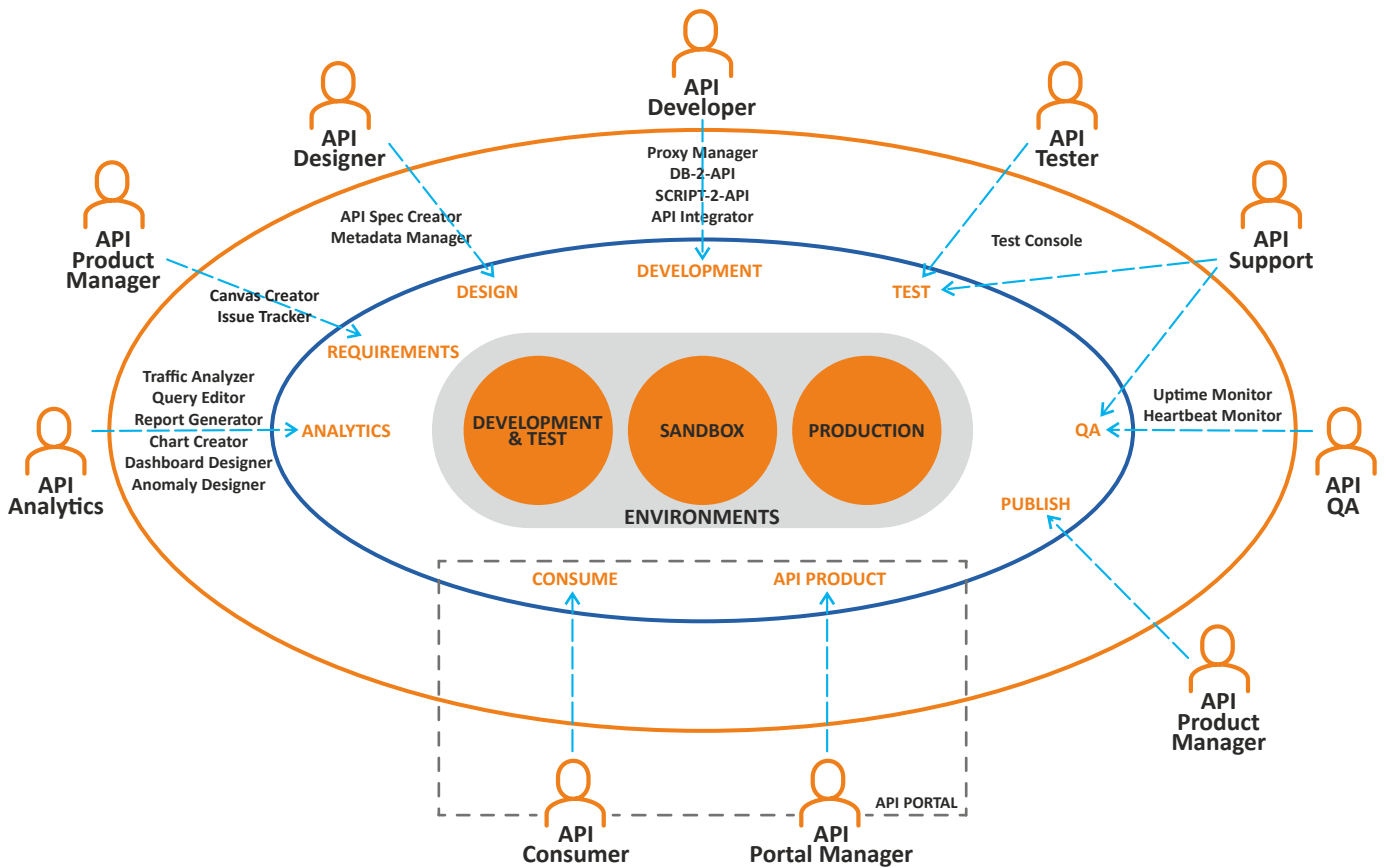
Secure

Powerful

**Apinizer** is the next generation end to end API Lifecycle Management & Integration platform. With its easy to use collaborative interface, users can work together to specify requirements, document, design, develop, test, deploy, publish, release, retire, monitor, analyze, report and monetize their APIs. **Apinizer** supports multiple teams, projects, environments, roles and has many features that can be used individually or in multiple modules to work with APIs. **Apinizer** provides developers the agility, speed and security for their daily tasks and fills the gap between software development and API development processes.

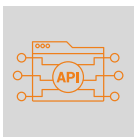


**Single Platform for All Stakeholders**



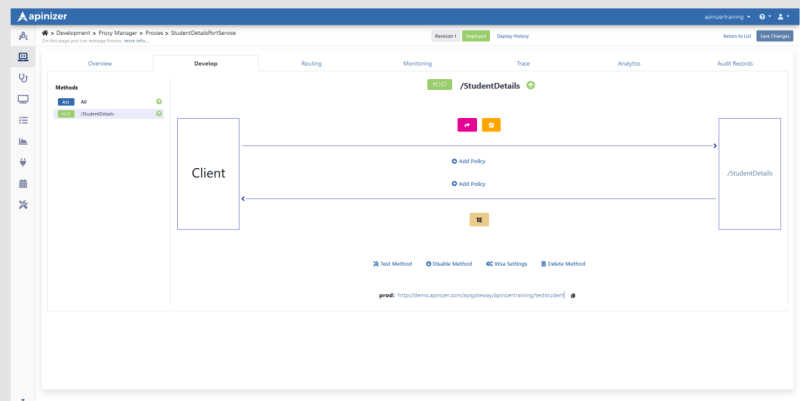
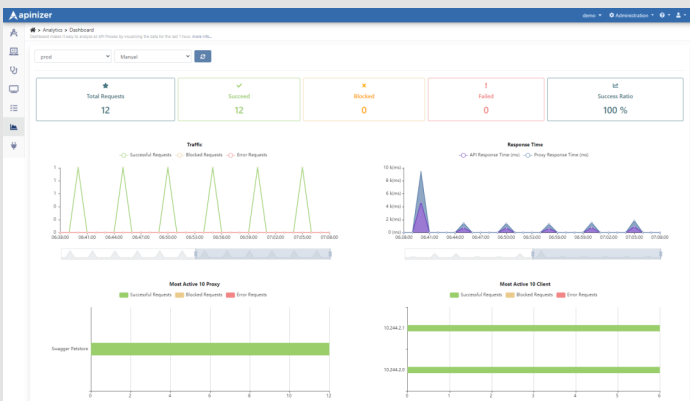
Apinizer encourages collaboration for all stakeholders of API Lifecycle.

## Products



### API Gateway

API Gateway is the policy enforcement point for the APIs. All requests to the APIs go through the API Gateway, and it ensures that the policies are applied, logs are recorded, etc. before forwarding the request to the back-end API, and returning its response to the clients.





## API Creator

No code, no application server, no configuration needed. Developer types native SQL or enters Groovy/JavaScript, and API Creator creates a REST endpoint on-the-fly, and the API is ready for publishing in seconds.



## API/Developer Portal

API Portal enables creating API Products with multiple pricing plans, and lets API Consumers test and buy the API Products with a simple registration. Flexible catalogue organization and key management facilities eases API Consumers' tasks.



## API Integrator

Developers create task chains to automate complex works spreading across various resources, and expose them via APIs or schedule their execution. No more need to develop custom programs to check your FTP server to download the Excel file at 01:00 AM everyday, and to send an email to someone after saving it to your database.



## API Monitor

API Monitor lets users create multiple monitors to continuously check APIs actively or passively with very simple “ping”s or complex input/output validations, and execute customized actions in case of repeating failures.



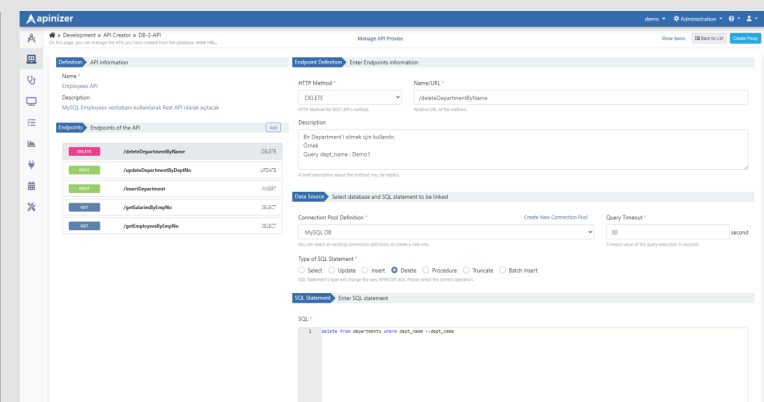
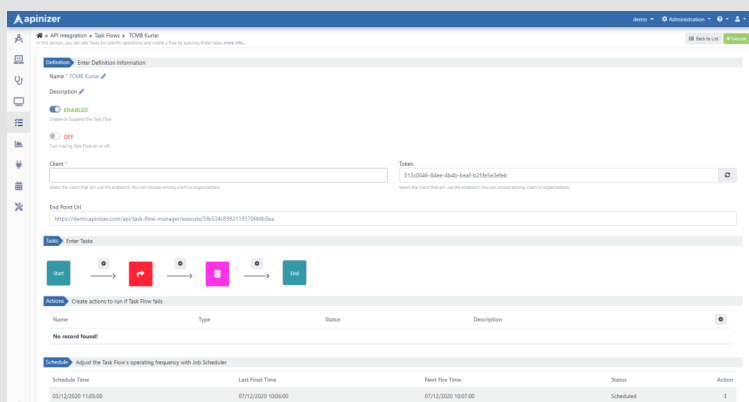
## API Spec Creator

All API Consumers or API Developers don't need to be the masters of Swagger/OpenAPI or JSON/YAML. API Spec Creator provides a GUI for users to define their endpoints, and create the specification of the API which can be exported as a standard document.



## Management Console

Not only developers or system administrators, but even inexperienced users benefit from Management Console's easy-to-use GUIs to do their job on Apinizer via their favourite browsers.





### Management API

Especially technical people may prefer automating configurations by developing client applications of Management API.



### Test Console

Easily test internal/external, SOAP/REST APIs. Reusable test collections and history records. No additional 3rd party software required to test APIs.



### Analytics

Developers get a quick insight to the performance and status of APIs, or prefer creating custom reports, charts or dashboards to continuously analyze their system.



### Connectors

Extensible connector architecture integrates external systems and/or resources such as e-mail, databases, internal/external APIs or Linux scripts to proxies, monitors, reports, and other features of Apinizer.

## Industries We Serve



Government Institutions



Defence Industry



Energy Gas & Oil



Finance



Many More



## About Apinizer

Next generation API Management Platform **Apinizer** provides a complete API management platform for developers. Its easy, secure and powerful architecture connects the dots between Software development and API development and helps developers run their daily API processes efficiently. With 25+ customers from different verticals, **Apinizer** now aims to expand its sales activities to global markets.