

# Hi, I'm aug·e



**Let's see how to  
reduce your EV charging costs  
and create an awesome user experience**

Prepared by  
Bart Gentens  
0473/269323  
15/10/2024



# Problem statement

# Problem statement

CFO



Charging my EV  
fleet costs a lot.

Fleet manager



What is the *real costs* of  
charging?  
How long can I use the  
CREG tariff\*?  
Can I be sure the energy  
bill of my colleague is  
not impacted?

Employee



I just want an easy  
way to get sufficient  
driving range.

\*[https://expert.taxwin.be/nl/tw\\_src\\_off\\_fisc/document/qp20210601\\_472-nl](https://expert.taxwin.be/nl/tw_src_off_fisc/document/qp20210601_472-nl)

# Value proposition

CFO



**Active energy management to lower energy costs for charging at home AND on the company site**

Fleet manager



**Real cost calculation based on actual energy contracts and real time insights**

Employee



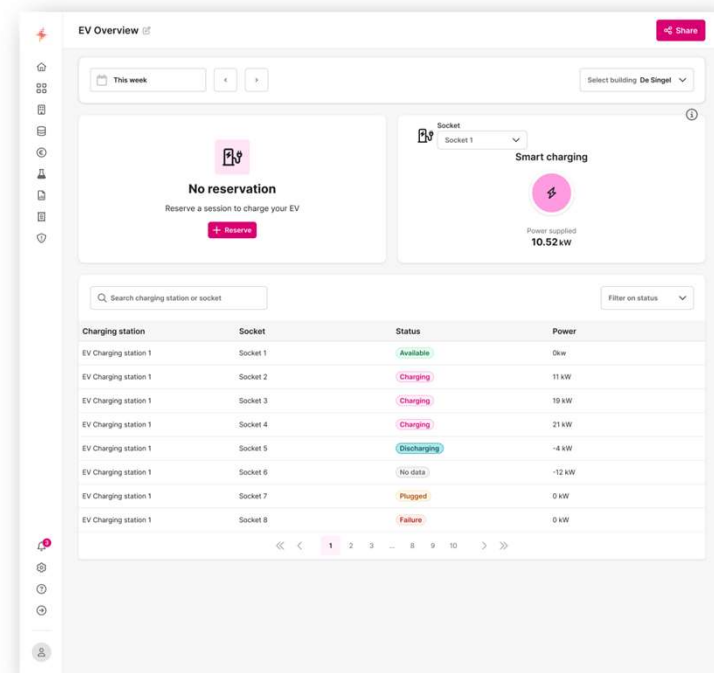
**Super user-friendly mobile app**

\*[https://expert.taxwin.be/nl/tw\\_src\\_off\\_fisc/document/qp20210601\\_472-nl](https://expert.taxwin.be/nl/tw_src_off_fisc/document/qp20210601_472-nl)

# Solution

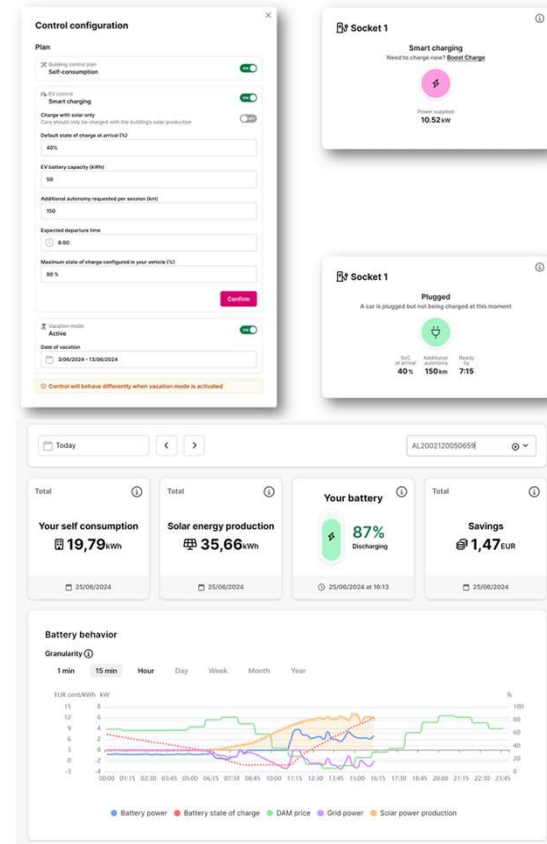
# Consider your fleet as a virtual power plant that you control

- Set default control preferences for your EV fleet when charging. Eg
  - Max solar usage
  - Cheapest price
  - Max comfort



# Give your employees their personal energy management system at home

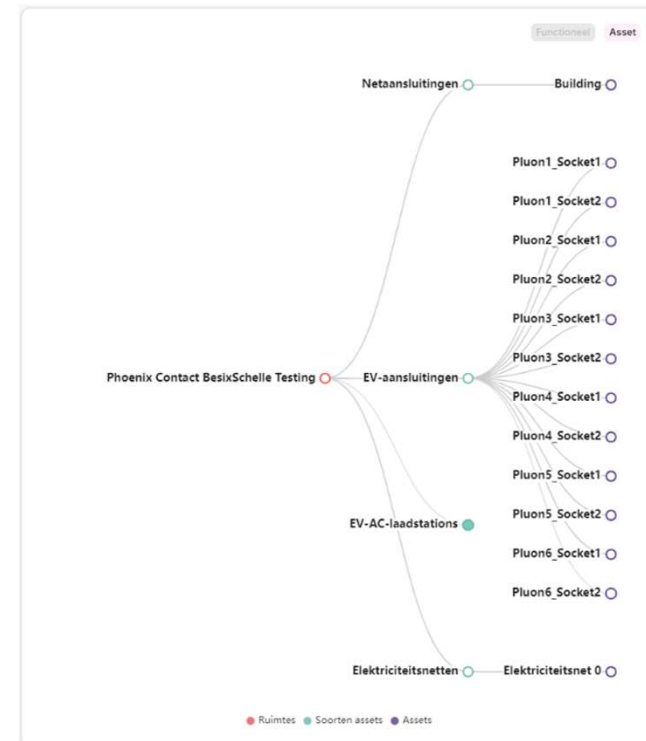
- Each member has the possibility to adjust their preferred settings
- Users can always change the charging settings of their car for maximal user comfort
- Add residential battery and PV system and enable the employee to optimize their entire usage





# Consider your parking lot as part of your virtual power plant

- Functionalities
  - Cost optimization based on energy contract
  - Maximize usage of green energy (solar, wind)
  - Charging stations linked to workspace reservations





# Business case

# Savings achieved

Contract type	Savings
Monthly variable / Fixed tariff	In Flanders, save up to <b>15%</b> due to capacity peak reduction  Save up to <b>15%</b> due to local solar consumption
Dynamic tariff	Save up to <b>20%</b> savings due to Dynamic vs CREG tariff
Grid balancing services	Coming soon

## 3 example persona's

CFO



- Drives Tesla Model 3 (15 kWh per 100km)
- Travels to meetings.
- Flexible charging time all workdays
- Solar at home

450€/yr

Software developer



- Drives Citroën e-C4 (20 kWh per 100km)
- Works 3 days at the office and the rest at home.
- Charges when at the office. Rest of the days charges at home.
- Flexible charging time 4 days of the week.
- No solar

350€/yr

Fleet manager



- Drives Volkswagen ID.4 (25 kWh per 100km)
- Works 9-to-5. Plugs at home after work.
- Charging can be shifted all workdays only between 18h and 8h.
- Solar at home

600€/yr

