

In today's dynamic business environment, embracing Environmental, Social, and Governance (ESG) considerations has taken centre stage. **ESGImpact** is an Enterprise wide Business Application developed to streamline compliance with regulatory requirements, while empowering clients with intelligence and insights to build a Sustainable Business.

Some of the challenges Executives face to progress



New compliance standards incl. **IFRS and ESRS (Europe)** becoming mandatory across global markets



Data sets in **multiple systems** and external partners making data sourcing and management complex



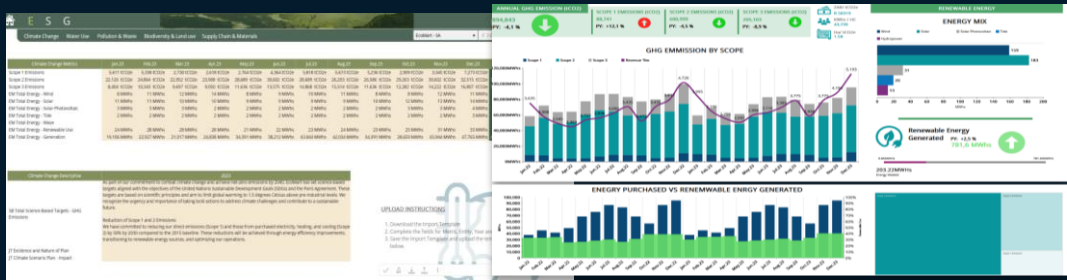
Internal stakeholders **lack clarity** regarding the metrics to be collected and reported to external stakeholders.



Reporting and compliance requirements have escalated quickly making consolidating and reporting complex.



Transform your Sustainability Journey with ESGImpact



PLATFORM FEATURES

Prebuilt Global Frameworks

Prebuilt metrics, requirements and measurement for global frameworks – IFRS S1/S2, GRI, ESRS, TCFD, UN SDGs.

Prebuilt Data Connectors

Prebuilt Integration directly to over 20 sources as well as manual capture and template upload.

Integrated Reporting and Modelling

Integrated Reporting, prebuilt stakeholder reporting and visualisations simplifying reporting and compliance.

Auditable Workflow Management

Detailed workflow and user management ensures traceability and accountability for data.

Cloud Data Platform

Secure Central Data Platform ESGLAKE to manage all data and governance in the Cloud.

360° Analytics

Enterprise wide prebuilt ESG analytics and dashboarding across all elements of ESG in a single platform.

73% Investors influenced by sustainability efforts²

2. '15 EYE—OPENING CORPORATE SOCIAL RESPONSIBILITY STATISTICS.' HBS Online

PLATFORM & INSIGHTS

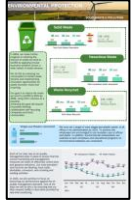
Data Management Platform

Environmental

Social

Governance

Prebuilt Reports



UNLOCKING THE ESG OPPORTUNITY

Shifting your focus to the significance of ESG presents a remarkable opportunity for your business. In this evolving landscape, organisations have the chance to leverage ESG considerations not only for societal and environmental betterment but also as a strategic tool for enhanced performance and growth.

KEY BENEFITS



Actionable Insights

Powerful **actionable insights** to clients for ESG tracking and reporting purposes



Rapid Deployment

Rapid deployment in weeks including full setup and configuration



Regulatory Compliance

Prebuilt Regulatory Frameworks ensure you are always abreast of your compliance obligations



Automated Reporting

70 prebuilt reports and dashboards provide an immediate lens on the business



More than Environmental

Covering the **entire ESG function** ahead of most ESG solutions that prioritise Environment



Supports Rating and Audit

Easy data extraction to **enable Ratings Agency** and align to External Auditors



DEPLOYMENT PARTNERS



Book a demo