



improving  
It's what we do.™

## xi. BW2SPHERE

The Ultimate Program for migrating from SAP BW to SAP Datasphere!



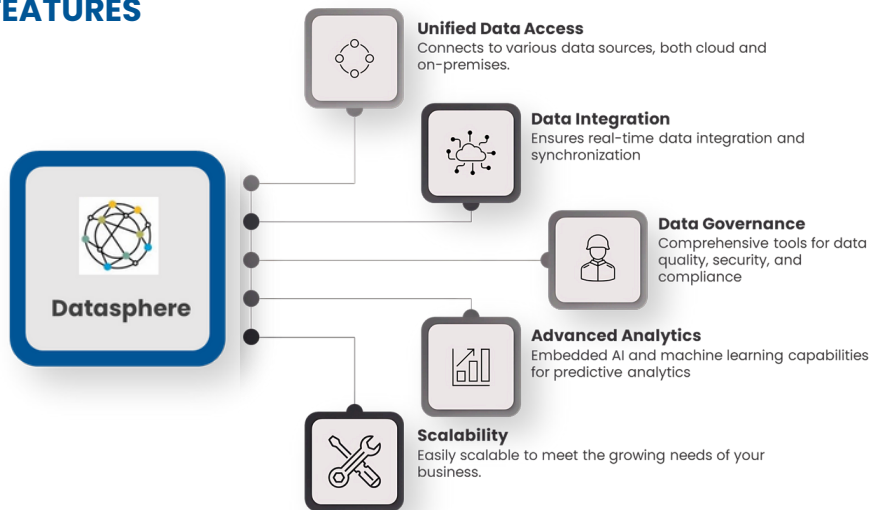
### PREPARE FOR SAP BTP DATASPHERE

SAP BTP Datasphere is a robust, cloud-based data management solution designed to help businesses unlock the full potential of their data. By seamlessly integrating data from various sources, it ensures smooth data flow and centralized management. This empowers organizations to make informed, data-driven decisions, enhancing efficiency and enabling more strategic business outcomes.

### KEY BENEFITS FOR YOUR BUSINESS

 <p><b>Business Power</b></p> <p>Access to accurate and real-time data insights</p>	 <p><b>Operational Efficiency</b></p> <p>Streamlined data management processes reduce time and costs</p>	 <p><b>Improved Collaboration</b></p> <p>Centralized data access promotes better teamwork and collaboration</p>	 <p><b>Compliance &amp; Security</b></p> <p>Robust data governance ensures regulatory compliance and data security?</p>
--	---	--	--

### KEY FEATURES



Ready To Depart with BW2SPHERE? [Click To Begin Today!](#)



[www.improving.com](http://www.improving.com)



improving  
It's what we do.™

## xi. BW2SPHERE

The Ultimate Program for migrating from SAP BW to SAP Datasphere!



### PAIN POINTS OF NOT HAVING A DATA WAREHOUSE



Outdated  
Architecture



Limited Flexibility and  
Scalability



Limited  
Collaboration



Limited Innovation and  
Future Roadmap



Cost  
Efficiency

### START WITH BW2SPHERE

**BW2SPHERE** can offer **3** primary strategies to migrate your SAP BW to SAP Datasphere:



### START WITH BW2SPHERE – ESSENTIALS KIT

#### Dataflows

Up to **10**

- InfoCube
- MultiProvider
- DSO/ADSO
- InfoSet
- Composite Provider

#### Masterdata

Up to **10**

- InfoObjects
- Attributes
- Hierarchies

\* Objects related to the dataflows

#### Queries

Up to **10**

- Choose what are the queries for migration.
- The queries should not contain Cells, Exits or Replacement Path.
- The queries will be replaced by Graphical Views in Datasphere.
- The new Graphical views will be available for consumption.
- The complexity of each query will be detailed during Explore Phase

#### Sources & Interfaces

- Datasphere should be able to connect to SAP ECC and will use the **BW ODP Datasources** available for consumption.
- Other BW Datasources should be available for consumption

#### Technical Routines & Calculations

- Migration of Low complexity ABAP routines
- Migration of Low complexity Calculations
- Replacing programming to graphical views and DSP objects, when possible
- The complexity of the ABAP routines and calculations will be detailed during Design Phase

#### Assumptions

- BW ODP Datasources available for the chosen dataflows and masterdata
- DP Agent / Cloud Connector installed, configured and available in DSP.
- Connections between all sources systems available in DSP.

#### Not Included

- Development of reports in any front-end system
- Mapping of any calculation on the current reports
- BW ODP Datasource Migration
- API Integrations
- Adjustments in any source system
- WAD / Bex Migration
- Business Enhancements in the chosen dataflows

Ready To Depart with BW2SPHERE? [Click To Begin Today!](#)



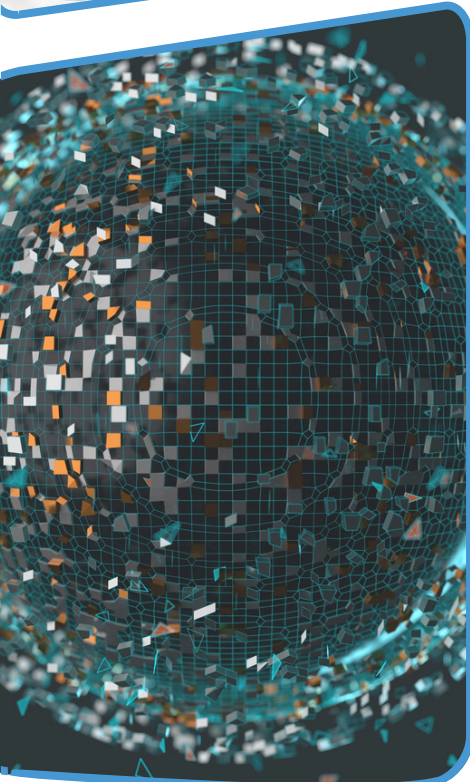
[www.improving.com](http://www.improving.com)



improving  
It's what we do.™

## xi. BW2SPHERE

The Ultimate Program for migrating from SAP BW to SAP Datasphere!



### START WITH BW2SPHERE – FOUNDATIONS KIT

**Dataflows**  
Up to **20**

- InfoCube
- MultiProvider
- DSO/ADSO
- InfoSet
- Composite Provider

**Masterdata**  
Up to **20**

- InfoObjects
- Attributes
- Hierarchies

\* Objects related to the dataflows

**Queries**  
Up to **20**

- Choose what are the queries for migration.
- The queries should not contain Cells, Exits or Replacement Path.
- The queries will be replaced by Graphical Views in Datasphere.
- The new Graphical views will be available for consumption.
- The complexity of each query will be detailed during Explore Phase

**Sources & Interfaces**

- Datasphere should be able to connect to SAP ECC and will use the **BW ODP Datasources** available for consumption.
- Other BW Datasources should be available for consumption

**Technical Routines & Calculations**

- Migration of Low complexity ABAP routines
- Migration of Low complexity Calculations
- Replacing programming to graphical views and DSP objects, when possible
- The complexity of the ABAP routines and calculations will be detailed during Design Phase

**Assumptions**

- BW ODP Datasources available for the chosen dataflows and masterdata
- DP Agent / Cloud Connector installed, configured and available in DSP
- Connections between all sources systems available in DSP.

**Not Included**

- Development of reports in any front-end system
- Mapping of any calculation on the current reports
- BW ODP Datasource Migration
- API Integrations
- Adjustments in any source system
- WAD/ Bex Migration
- Business Enhancements in the chosen dataflows

### START WITH BW2SPHERE – ADVANCED KIT

**Dataflows**  
Up to **30**

- InfoCube
- MultiProvider
- DSO/ADSO
- InfoSet
- Composite Provider

**Masterdata**  
Up to **30**

- InfoObjects
- Attributes
- Hierarchies

\* Objects related to the dataflows

**Queries**  
Up to **30**

- Choose what are the queries for migration.
- The queries should not contain Cells, Exits or Replacement Path.
- The queries will be replaced by Graphical Views in Datasphere.
- The new Graphical views will be available for consumption.
- The complexity of each query will be detailed during Explore Phase

**Sources & Interfaces**

- Datasphere should be able to connect to SAP ECC and will use the **BW ODP Datasources** available for consumption.
- Other BW Datasources should be available for consumption

**Technical Routines & Calculations**

- Migration of Low complexity ABAP routines
- Migration of Low complexity Calculations
- Replacing programming to graphical views and DSP objects, when possible
- The complexity of the ABAP routines and calculations will be detailed during Design Phase

**Assumptions**

- BW ODP Datasources available for the chosen dataflows and masterdata
- DP Agent / Cloud Connector installed, configured and available in DSP
- Connections between all sources systems available in DSP.

**Not Included**

- Development of reports in any front-end system
- Mapping of any calculation on the current reports
- BW ODP Datasource Migration
- API Integrations
- Adjustments in any source system
- WAD/ Bex Migration
- Business Enhancements in the chosen dataflows



Ready To Depart with BW2SPHERE? [Click To Begin Today!](#)



www.improving.com



improving  
It's what we do.™

## xi. BW2SPHERE

The Ultimate Program for migrating from SAP BW to SAP Datasphere!



### START WITH BW2SPHERE – ADDITIONAL PACKAGES

Providing an end-to-end solution, Improving would recommend to add the Reporting Package and the Technical Datasource Package to support the business needs in this migration to the cloud:

**Reports**

Up to **20**

- SAP Analytics Cloud\* or
- SAP Analysis for Office\*
- Design sessions to understand the current report and its calculations
- The reports will be based on the Graphical Views available for consumption

\* Licenses for SAC Analytics Cloud and/or SAP Analysis for Office should be available

**Datasource Packages**

Up to **20**

- ODP Datasource Migration
- DSP Datasource Delta control for the data that need to be updated
- Creation of new datasources to replace old ones when necessary.

\* ABAP Development Key required

**Training**

**24h**

- SAP Datasphere foundation training
- SAP Datasphere Modeling
- SAP Analytics Cloud – Creating Dashboards and Reports

\* Licenses for SAC Analytics Cloud and/or SAP Analysis for Office should be available

### STRATEGY AND NEXT STEPS



Ready To Depart with BW2SPHERE? **Click To Begin Today!**



[www.improving.com](http://www.improving.com)