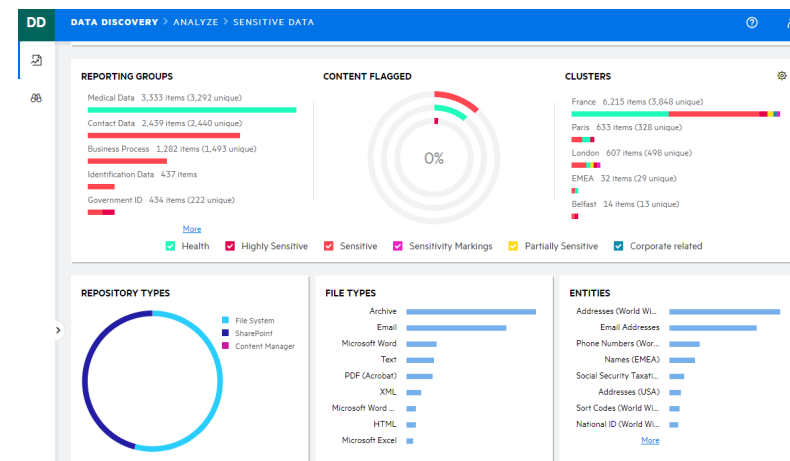


# File Analysis Suite

Proof of Value (PoV) Offering  
July 2022

Erik Wold, Information First  
ewold@info-first.com



# The Proof of Value



4 Weeks



1 TB



1 Source



Learn Discovery  
Process

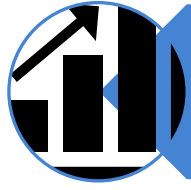


Gain Insight



\$10K

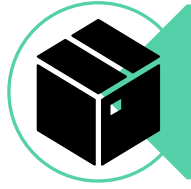
# Common Pain Points



Lack of governance over exponentially increasing unstructured data



Lack of visibility of data across disparate silos and repositories

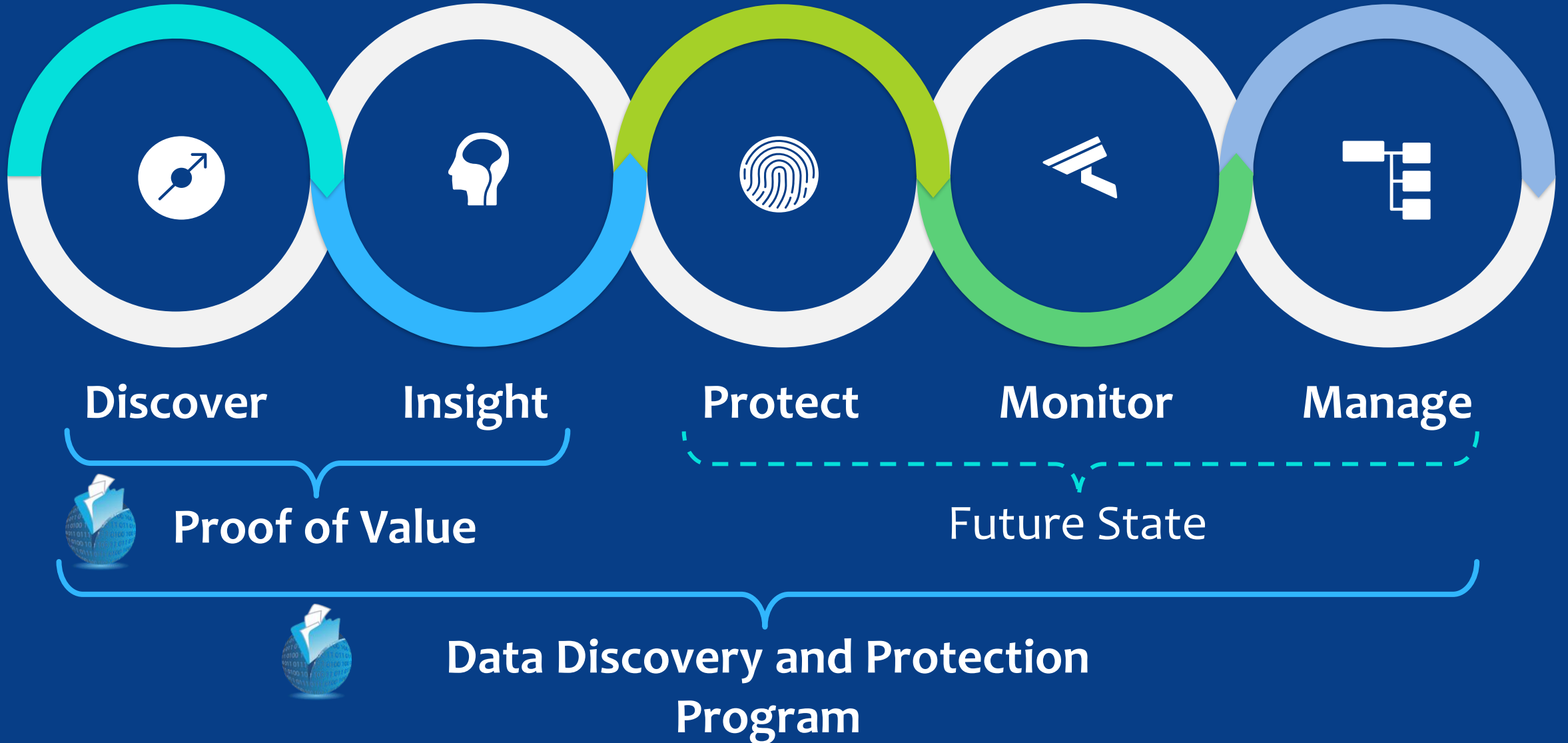


Unnecessary computing infrastructure needed to manage data with little or no value (E.g., ROT – Redundant, Obsolete or Trivial)



Non-compliance with data/records retention policies

# Strategy towards Governance



# Discover



## Speed and scale

- Scale out to meet enterprise workloads
- Hybrid file analysis

## Analyze in-place

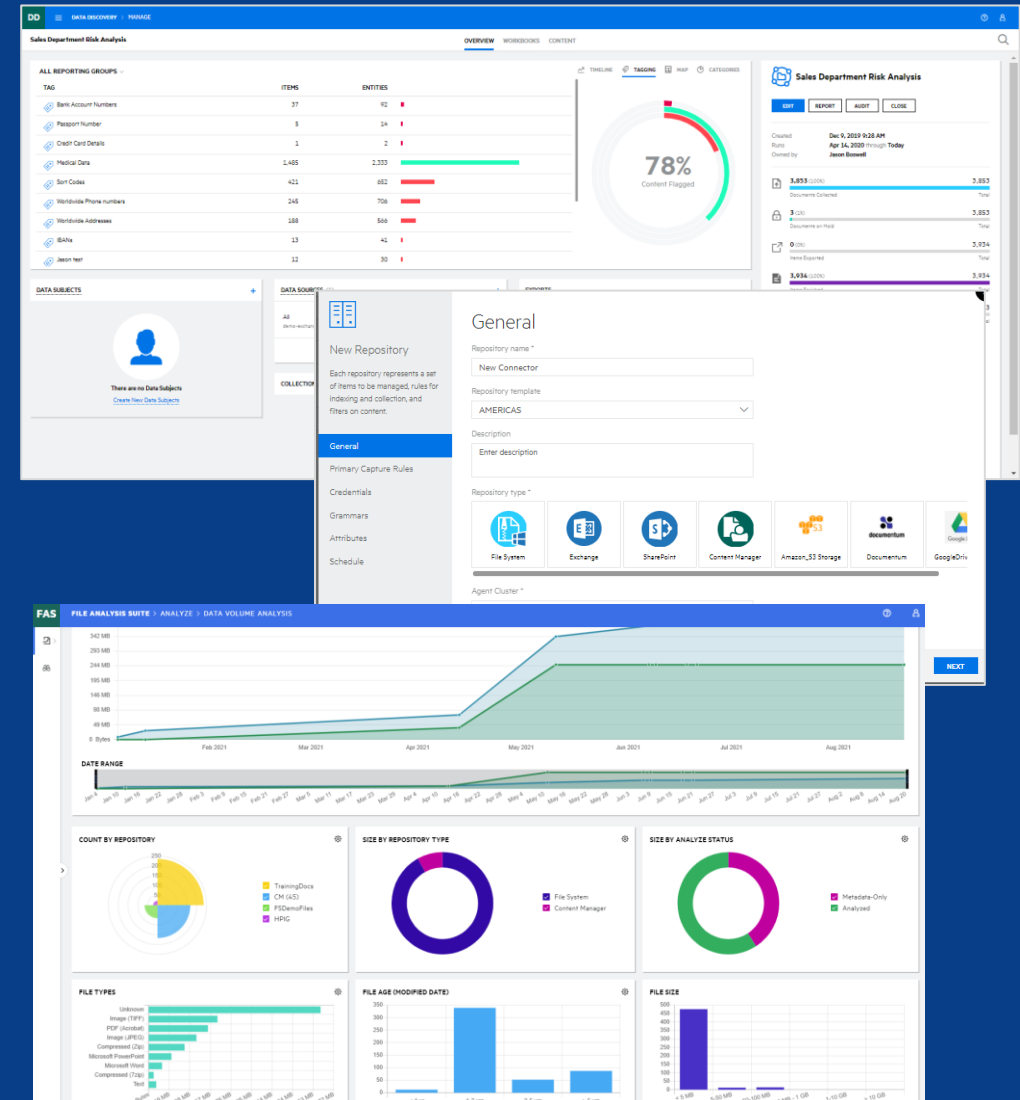
- Learn without the need to move or copy to a central location.

## Depth & breadth

- Support 1000+ file types
- Discover sensitive data across 39+ countries and economic regions.
- Tagging, and weighted labels

## Robust scanning

- In dashboard audit trail, process monitoring and volume metrics



# Insight



## Context-aware file analysis

- Apply classifications to data based contextual understanding of document content.

## Value-based lifecycle decisions

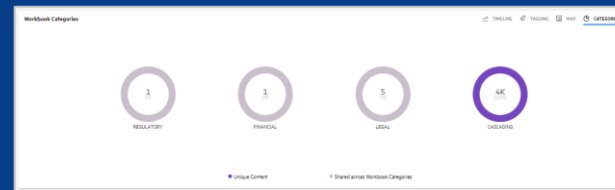
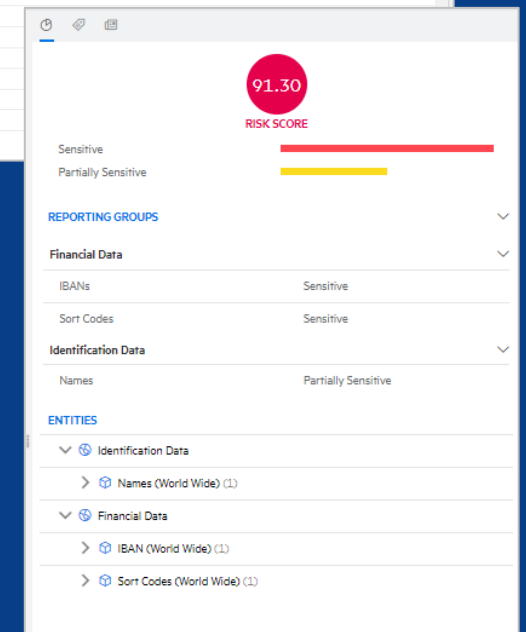
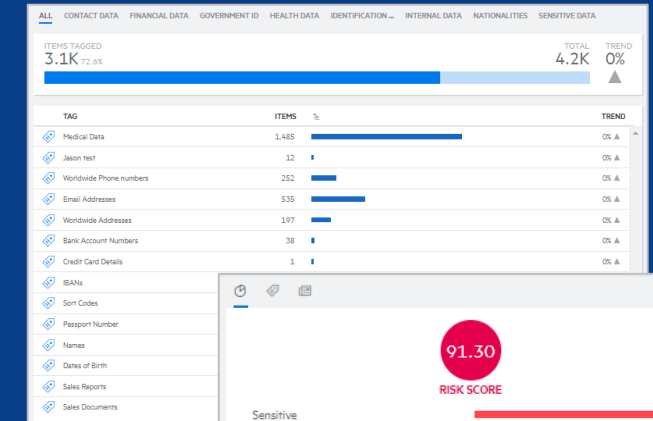
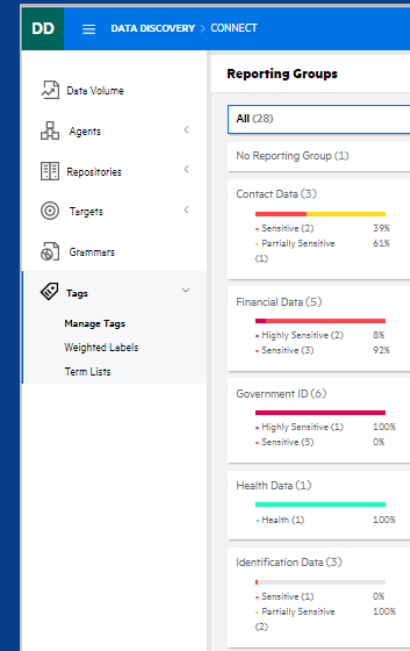
- Apply data lifecycle policies based on value of data.

## Actionable data analytics

- Rich visualizations around risk impact, PII categories and data management

## Policy-based management

- Defensible dispose data and manage data retention rules to drive compliance and contain costs.





# Protect

## Transparent encryption

- Persistent encryption across platforms beyond the edge or network boundaries.

## Govern data access and recover

- Ensure that sensitive data is protected from unauthorized access.

## Protect in place

- Automate sensitive data detection based on risk and context.

## Secure information sharing

- Control use and proliferation of sensitive files.

The image displays three overlapping screenshots of the Voltage SmartCipher user interface. The top screenshot shows the 'GRAMMAR REGIONS' configuration page, where users can select regions and countries. The middle screenshot shows the 'POLICY SETUP' page with a grid of policy cards for 'Active', 'Stealth', and 'Discovery' categories. The bottom screenshot shows a table of published policies.

STATUS / POLICY NAME	MODE	CLASSIFICATION	DPOC	LAST PUBLISHED	CONFLICTS
Published					
<input checked="" type="checkbox"/> PII_Document_Content_01	Active	Restricted	✓	Jan 1, 2020 6:35 PM	
<input type="checkbox"/> Local Folder_01	Active	Confidential	✓	Jan 2, 2020 4:53 PM	
<input type="checkbox"/> Active_ManualShareFolder_Extension_03	Active	Confidential	✓	Jan 5, 2020 1:01 PM	
<input type="checkbox"/> Active_ManualShareFolder_Extension_04	Active	Public	✓	Jan 7, 2020 4:14 PM	
<input type="checkbox"/> Active_ManualShareFolder_Extension_05	Active	Internal	✓	Jan 19, 2020 6:20 PM	

# Monitor



## Insight driven protection

- Prioritize protection based on risk hot spots across and shorten time to compliance.

## Intelligent access

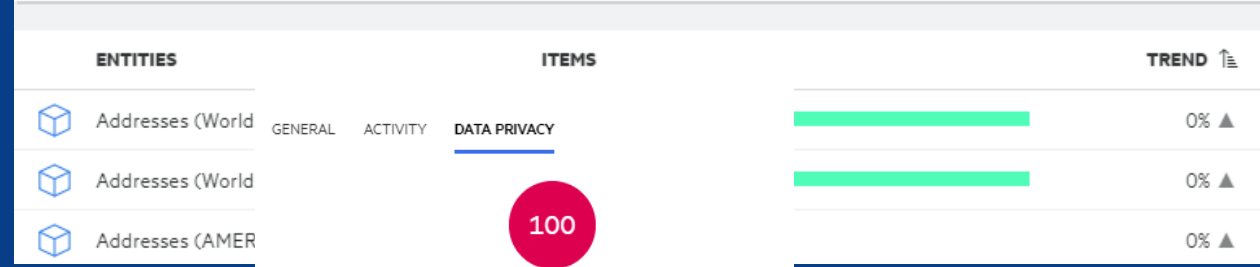
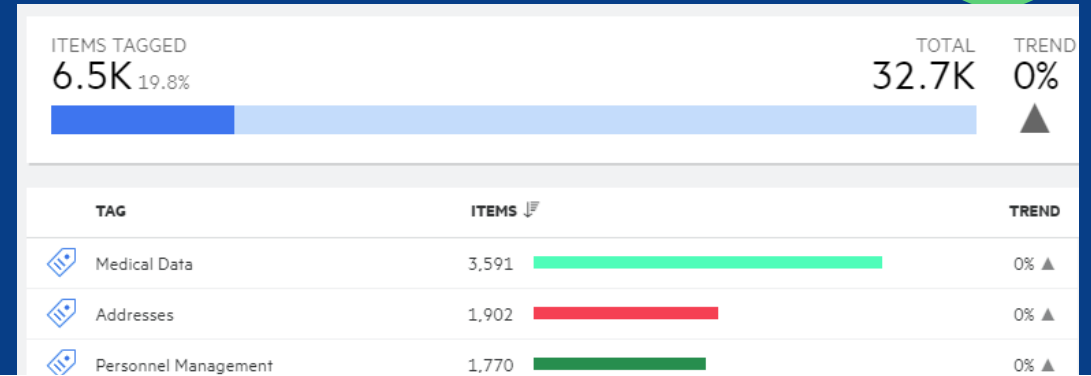
- Identifying security vulnerabilities and remediate.
- Assess and measure to make better decisions

## Accuracy and speed

- Reduce the avalanche of burden from unmonitored data.

## Flexible policy enforcement

- Adjust assessment of risk without rescanning



BY TAG	NAME	ITEMS	SEVERITY
	Medical Data	1,331	Health
	Financial Managem...	232	AFDA Record





# Manage

## Target disposition activities

- Identify redundant, obsolete, trivial data and take action.
- Track and monitor data disposition.

## Smart data management

- Make faster, informed decisions around data disposition.

## Data minimization

- Defensibly delete data at the source.
- Automatic or self-directed disposition of data.

## Monitor and audit

- Track, monitor and audit all actions taken on data including disposition.

The screenshot displays the File Analysis Suite (FAS) interface. At the top, the breadcrumb navigation reads: FILE ANALYSIS SUITE > MANAGE > WORKSPACES > DSAR La Defense. Below this, the 'AUDIT RECORDS (3)' section shows a table with columns for EVENT TIME, USER NAME, EVENT, TYPE, and DETAILS. The table contains three entries:

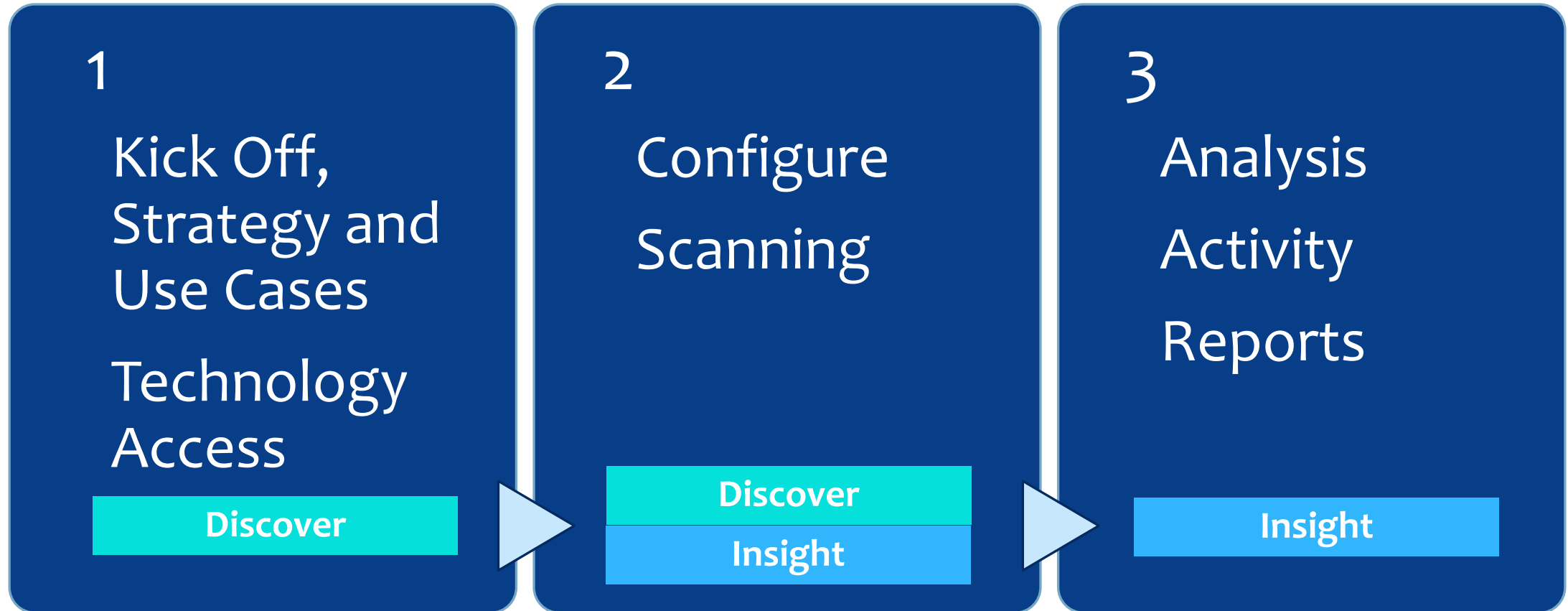
EVENT TIME	USER NAME	EVENT	TYPE	DETAILS
Sep 30, 2021 3:29 AM	dinesh.saini@microfocus.com	File Analysis	Workbook	OCR'd Workbook <b>Contact Information - worldwide</b>
Jul 29, 2020 4:49 PM	alex.gendry@microfocus.com	File Analysis	Workbook	Enriched Workbook <b>DSAR Earl Jones</b>
Jul 29, 2020 4:41 PM	alex.gendry@microfocus.com	File Analysis	Workbook	Enriched Workbook <b>CP Documents</b>

Below the table is a summary dashboard with the following metrics:

- Documents Collected: 986 (92%) of 1,067
- Documents on Hold: 1 (<1%)
- Items Exported: 0 (0%)
- Items Enriched: 1,034 (48%)
- Documents Sent to Target: 0 (0%) of 1,067
- Documents Deleted: 0

A 'GENERAL' tab is active, showing icons for 'Index Content', 'Collect', 'Enrich', 'Hold', 'Send to Target', and 'Delete'. The 'ACTIVITY' and 'DATA PRIVACY' tabs are also visible.

# 4 Week Proof Of Value



# Functions and Categories

(adhere to compliance frameworks NIST/ISO...)



 **Data Discovery**

- Age & Size
- File Types
- Sensitivity
- Trends

- Metrics
- Governance
- Records
- OCR

- Risk and Mapping
- Performance



 **Data Minimization**

- Redundant
- Obsolete
- Trivial

- PII



 **Privacy & Risk Assessment**

- Sensitive Data
- Privacy Data

- Legal Holds



 **Response Management**

- Data Subject Access Requests

- Legal Hold



 **Data Protection**

- Secure records
- Encrypt options

**FACTS = ACCOUNTABILITY**

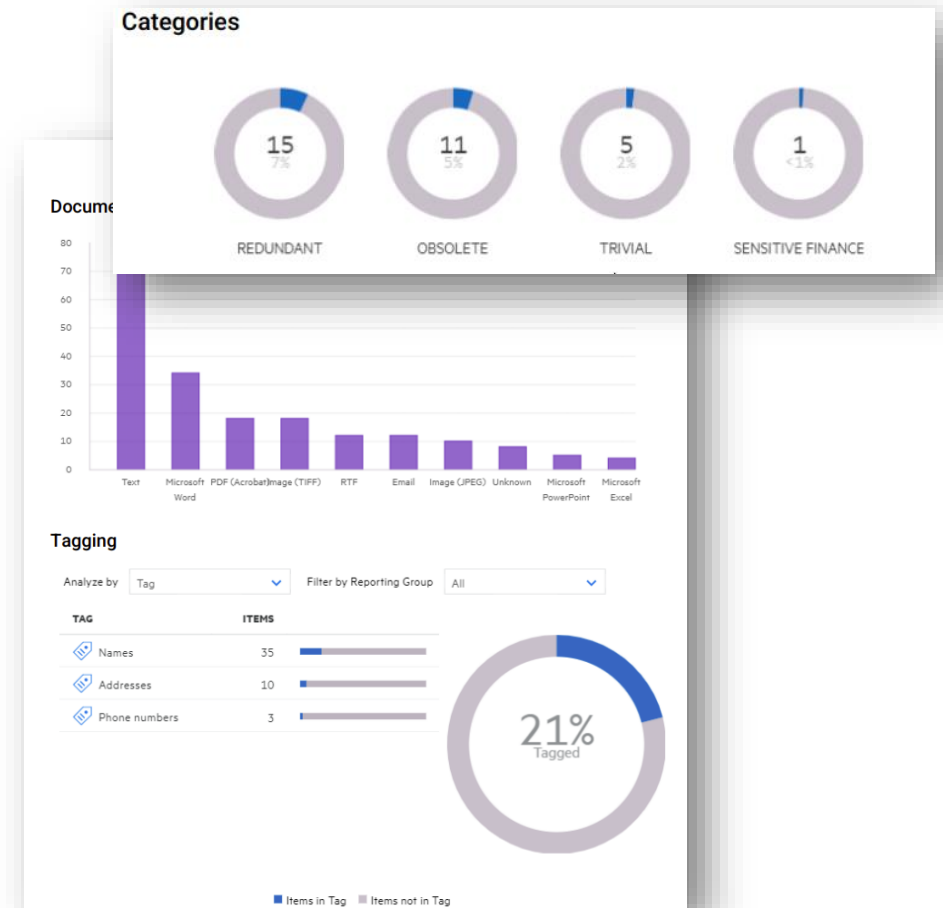
# Deliverables

## Data Discovery & Protection Program Roadmap

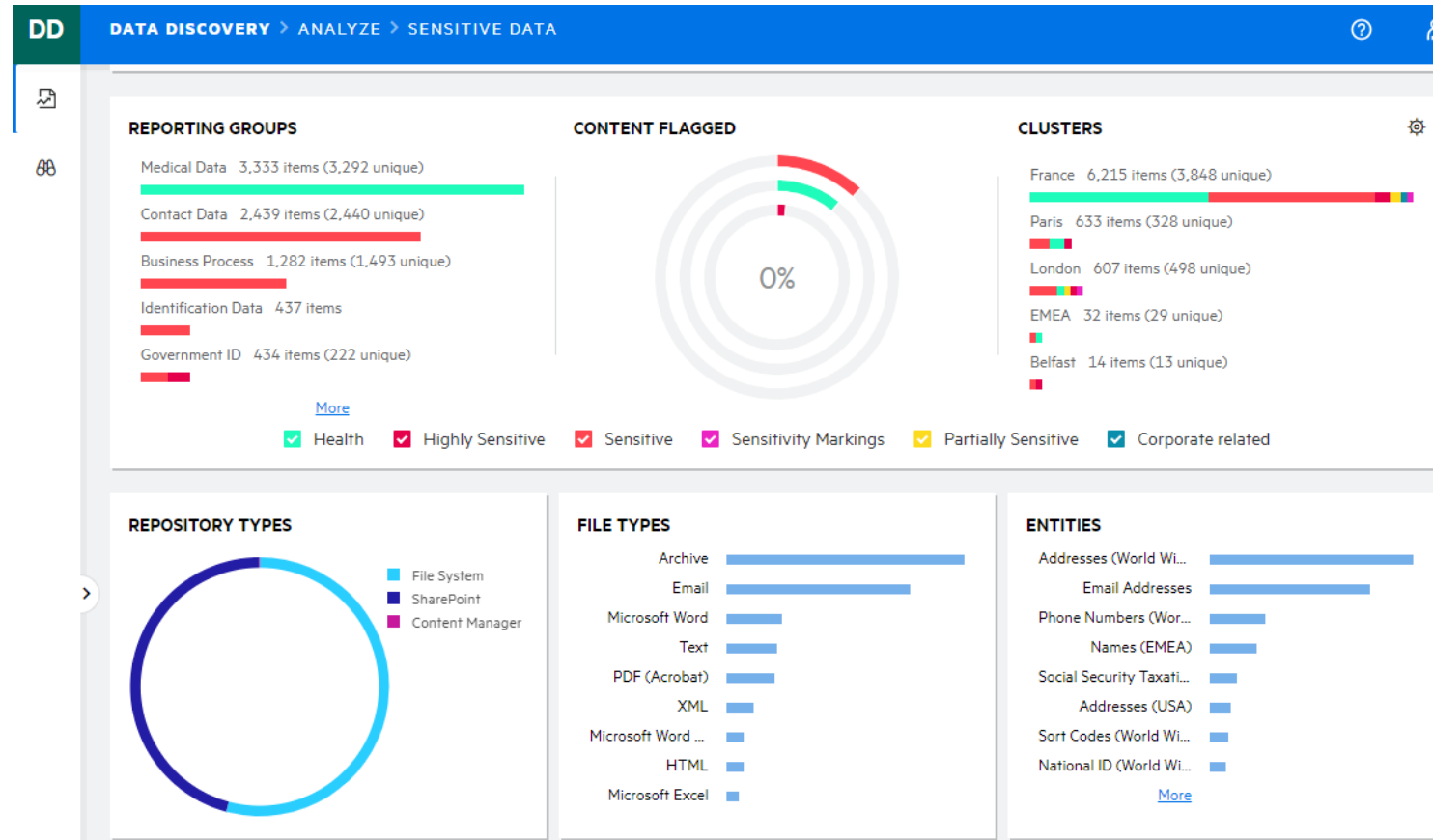
- Executive Summary
- Discovery and Insight Analysis
- Recommendations

## Discovery & Insight 360 Report

- Scanning Metrics
- Visualization Dashboards
- Risk, ROT, and Sensitive Data Findings
- Information Governance Non-compliance Results



# Interfaces and Demonstration





# Privacy Is Not Funny Business

Privacy Compliance begins  
with Data Discovery