



***EFFICIENT HEALTHCARE  
WITH ACTIVATED DATA***

InGraph – The most powerful healthcare analytics product

# **HEALTHCARE HAS A LOT DATA BUT NOT ENOUGH INSIGHTS**

- ▶ Patient data
- ▶ Population health data
- ▶ Provider performance
- ▶ Clinical outcomes
- ▶ Quality scores
- ▶ Cost ratios



**THE INSIGHTS THAT CAN BE USED  
TO IMPROVE CARE OUTCOMES.**

**ONLY A FEW  
HAVE ACCESS TO  
INSIGHTS  
TO IMPROVE  
OUTCOMES**

- ▶ Data is disconnected and unable to provide complete picture of patient journey
- ▶ It exists in different formats (text, numbers, codes, paper, pictures, etc.)
- ▶ Several applications makes it difficult to structure data
- ▶ The ‘analysis-paralysis’ is spreading like a disease

# *IT'S NOT YOUR FAULT*

**THE TECHNOLOGY THAT ONCE PROMISED  
TO PROVIDE COMPLETE PATIENT VIEW  
HAS BROUGHT MORE ISSUES THAN  
ANYONE EVER ANTICIPATED.**

***WE'RE HERE TO  
RIGHT THE WRONGS OF  
HEALTHCARE TECHNOLOGY***

# ***BUILDING HEALTHCARE'S INFORMATION SUPERHIGHWAY***

## **CONNECTED DATA CAN ENABLE**

- ▶ **Holistic Patient View**
- ▶ **Point-of-care Decision Support**
- ▶ **Outcome-based Payments**
- ▶ **Standardized Care Delivery**
- ▶ **Productive Workforce**
- ▶ **Engaged Patients**

# ACTIVATING DATA FOR PROVIDER PERFORMANCE



## VIEW DRILLED-DOWN PROVIDER PERFORMANCES

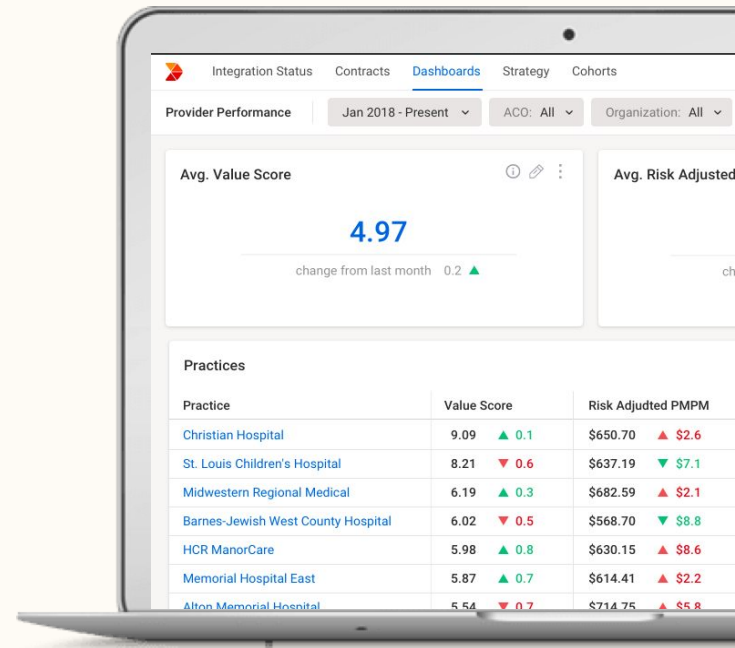
Get provider views on not just managed lives and value score but also composite quality score and take action on the go.

## MONITOR THE OUTLIERS

Get complete provider performance views and find out outliers and attribution leakage percentage.

## IMPROVE EACH OUTLYING METRICS

Get detailed view of each metric affecting performance and strategize accordingly.



# ACTIVATING DATA FOR NETWORK PERFORMANCE



## COMPARE CONTRACTS AND LEAKAGE OVER TIME

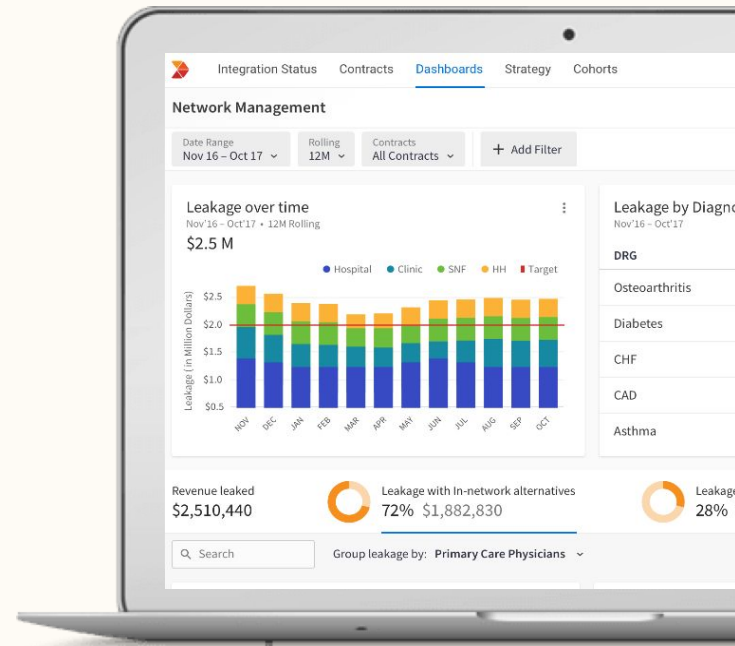
Compare contract revenue contribution and growth over time. Find out how much could have been saved with in-network alternatives.

## EVALUATE THE EFFECTIVENESS OF YOUR STRATEGY

Recognize in-network alternatives and potential dollar amount savings.

## RECOGNIZE NETWORK LEAKAGES

Stay on track by recognising out of network leakages per practice and take actions on the go.





# ACTIVATING DATA FOR *InNOTE PERFORMANCE*



## GET ALL CODING AND CARE GAPS IN ONE PLACE

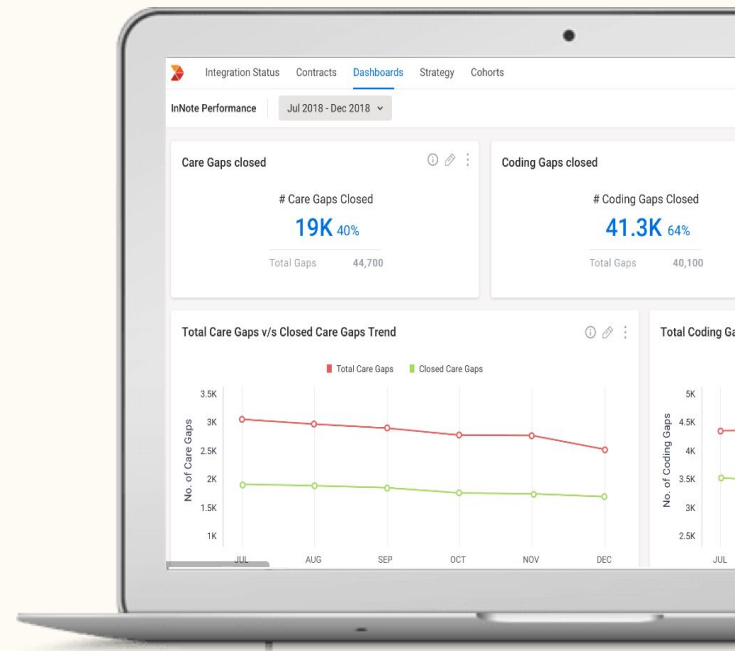
Find out total coding and care gaps at one place without hustling between different applications.

## TREND ANALYSIS

Never wait for any report; just at one click get complete view of total care gaps and care gaps closed month-wise.

## MANAGE PROVIDERS BETTER

Stay on track with most accurate data while understanding per provider lives covered and care gaps closed.



# ACTIVATING DATA FOR CLINICAL DOCUMENTATION IMPROVEMENT



## GET POTENTIAL SAVING OPPORTUNITIES

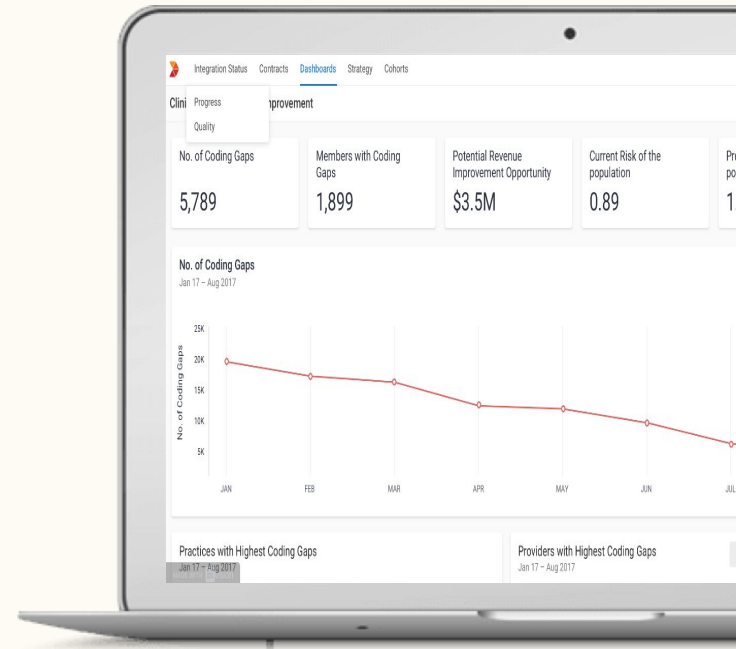
Get total number of coding gaps with potential saving opportunities and analyse performance trend.

## CREATE INDIVIDUALIZED STRATEGY TO CLOSE GAPS FASTER

Get individualised coding gaps and risk score differences and create strategy on the go.

## RECOGNIZE PRACTICES WITH HIGHEST CODING GAPS

Stay on track by recognising practices with highest coding gaps and track improvement.



# ACTIVATING DATA FOR SPECIALIST PERFORMANCE



## MANAGE COST AND QUALITY

See average episode score efficiency as compared to total number of episodes occurred and quality score.

## MEASURE AND TRACK SPECIALITY PERFORMANCE

Find episode cost efficiency for every speciality and get comparable quality score

## STRATEGIZE AND MEASURE QUALITY

Strategize and measure quality monthly to keep a track of improvements.

