

A futuristic digital globe with glowing lines and data points. The globe is rendered in shades of blue, purple, and pink, with a grid of dots and lines overlaid on it. Several glowing hexagonal shapes and lines are scattered across the globe, suggesting a network or data flow. The overall aesthetic is high-tech and digital.

iPtech

Corporate Profile

Applying
TECHNOLOGY
to
SIMPLIFY
Business Processes

A LEADING ONLINE TECHNOLOGY PROVIDER

As a premier interactive design and technology agency, IPTECH offers a comprehensive solution for all your needs. Founded in 2000, we boast a wealth of experience in the fields of Design and Technology, with a sharp focus on delivering exceptional MICE and Enterprise solutions.



**EXHIBITION
& EVENT
SOLUTIONS**



**ENTERPRISE
CONTENT
MANAGEMENT**



**DATA
PROTECTION &
SECURITY**



**CUSTOM
APPLICATION
DEVELOPMENT**

OUR SERVICES

At IPTECH, we offer a comprehensive range of turnkey solutions, encompassing everything from designing and developing websites and web applications to advanced enterprise content management systems and secure data protection solutions.

EXHIBITION & EVENT SOLUTIONS

We are a leading Events solution provider.

6 Key Systems for a Successful Event

We offer a full-spectrum exhibition and event solution, designed to streamline all aspects of event management, from engaging exhibitors and speakers to driving visitor attendance and fostering networking opportunities. Our offerings range from integrated solutions to standalone options, tailored to meet the unique needs of events of all sizes and types.



EVENT MANAGEMENT

- Online Registration System
- Onsite Registration System
- Abstract Management
- Web Surveys
- RSVP



EVENT MARKETING

- Mobile Website
- Email Marketing
- Website Development



BUSINESS NETWORKING

- Onsite Business Networking
- Event App
- Bar/ QR Code Scanning



EXHIBITOR MANAGEMENT

- Exhibitor Application
- Exhibitor Online Directory
- E-Manual



MOBILE APPS

- Delegate Management System
- Onsite Business Networking
- Appointment Management



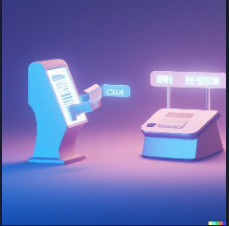
VIRTUAL/HYBRID EVENTS

- Registration
- Event Microsites/ Portals
- Live Streaming
- Networking
- Virtual Exhibitors

EVENT MANAGEMENT



Online Registration System



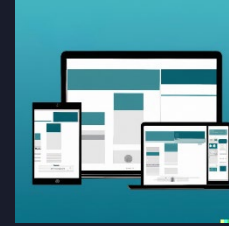
Online Registration and Payment Processing

Streamlines registration process and eliminates manual errors.



Customizable Fields

To gather event-specific information through custom fields and questions.



Responsive Web Design

Accessible from any device, providing a seamless experience for attendees.



Real-Time Updates

Provide event organizers with up-to-date data on attendee information.



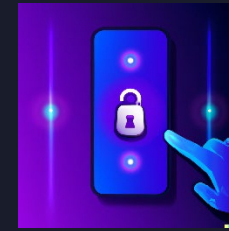
Marketing Integrations

To promote the event and track registration efforts.



Reporting and Analytics

Access valuable data and insights.



Access Control

Password protection to ensure security of sensitive information.

EVENT MANAGEMENT

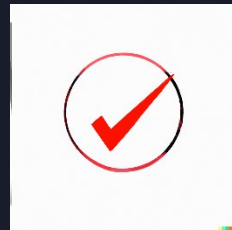


On-site Scanning System



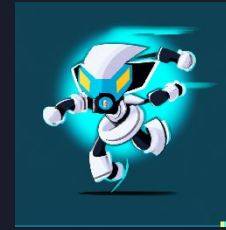
Real-time Data Collection

Provide organizers with up-to-date information on attendee check-in.



Validation and Accuracy

Reduce risk of fraud and improve security through unique QR codes.



Speedy Check-in via Mobile Device

Reduce wait times for high volume attendee turn-ups.



Integration with event platform

Provide real-time updates on attendee information, ticket availability & attendance



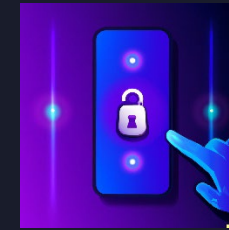
Customizable Scanning Options

Event-specific code type or Area zones for tiered check-ins.



Reporting and Analytics

Access valuable data and insights such as attendee check-in time



Security

Provide secure and controlled environment for attendee check-in.

DATA PROTECTION & SECURITY

At IPTECH, security is at the forefront of our application and solution development. Adhering to data protection by design principles, our projects are secured throughout their entire life cycle, from requirements gathering to deployment.

With over 22 years of experience in delivering secure solutions for both the private and public sectors, and in partnership with our security solution providers, we are equipped to meet the rigorous demands of today's ever-evolving IT landscape.



DATA PROTECTION BY DESIGN

- Data Inventory Map and Data Flows
- PDPA Data Protection and Retention Obligations



APPLICATION SECURITY

- Secure Software Design Principles
- Secure Coding Guidelines and Framework
- Use of strong cryptography to secure data
- Owasp Top 10



SERVER & NETWORK SECURITY

- Server Setup and Configurations
- Server Hardening
- Network Infrastructure Security



SECURITY TESTING

- Penetration Testing
- Vulnerability Assessment
- Source Code Reviews
- Partner with ITSEC



ENTERPRISE CONTENT MANAGEMENT SYSTEM

As a Sitefinity Delivery Partner, IPTECH specializes in delivering top-notch Sitefinity Enterprise CMS solutions. Our team of certified developers guarantees that your solution will be expertly implemented to the highest standards and specifications.

In addition, we develop and tailor custom applications for deployment within Sitefinity, enabling our clients to achieve a seamless and integrated online strategy.

SITEFINITY EXPERTISE



Enterprise Deployment



Multi-site Management



Content Personalization



Digital Experience Cloud



Site Sync



Multi-language



Dynamic Design



Mobile Responsive



Customised Applications



High Traffic Websites



High Security Deployments



Sitefinity Hosting

CUSTOM APPLICATION DEVELOPMENT

At IPTECH, we offer customized application development services for workflow, knowledge, and data management systems.

Our dedicated consultants collaborate with you to comprehend your business and facilitate the creation of an online strategy that seamlessly connects you with your customers.



Workflow Systems



E-Learning Systems & Content Production



Knowledge Management



Mobile Applications



Data Management



E-Commerce Solutions

WHY WORK WITH US?



Fast to Market

With over 16 years of experience in the industry, we possess a deep understanding of our customers' needs and requirements.



Regional Presence

Our development teams, stationed in both Singapore and Jakarta, are dedicated to providing superior service and support to our valued customers.



Efficient Use of Technology

We champion the responsible and efficient utilization of technology, ensuring our customers make the most of their investments without overspending.



Bridging the Gap

Partnering with you, we strive to comprehend your business and aid in crafting a robust online strategy that effectively connects you with your customers.

PAST VIRTUAL & HYBRID EVENTS (Year 2022)

- AMRO ASEAN+3 Macroeconomic Research Office
- DSO 50th Anniversary Opening Ceremony and Dinner
- ECDA Child Conference
- ESMO Medical Webinars
- HSBC Women's Golf
- Huawei Spark
- ITE Industry Partnership Forum
- ITE SkillsFuture WSF
- JTC Industry Day
- Lazada LazMall BFF
- MAS 50th Anniversary Partners Appreciation Evening
- MOE Special Education (SPED) Singapore Conference
- Ngee Ann Polytechnic Open House
- Ngee Ann Polytechnic Parents Forum
- SUSS Global Lifelong Learning Summit
- PMO COP27 Singapore Pavilion
- Republic Polytechnic Open House
- Santen Asia Webinars
- Singapore Polytechnic Open House
- SPS Year of Celebrating SG Families (YCF)

PAST VIRTUAL EVENTS (Year 2021)

- Bayer Webinars
- Chinese Chamber Society SMEICC
- ESMO Medical Webinars
- Huawei Cloud – NUS AI Symposium
- Huawei Cloud AI Fintech Symposium
- Huawei Spark Founders Summit
- IPOS IPWeek
- ITE Parents Seminar
- LVMH – SMU Luxury Research Conference
- Macnica Cytech Virtual Event
- Mead Johnson Milk Powder Launch
- MOE Teachers' Conference ExCEL Fest
- MOE E-Fiesta Bahasa
- MOE NTILS
- MOE World Book Day
- MOE BSP e-Camp 双文化学习营 2021
- NAFA e-Convocation
- NAFA e-Graduation
- NUS Precision Public Health Asia
- Panasonic Virtual World
- Prudential Webinars
- Republic Polytechnic Open House
- SIT e-Orientation
- SUSS e-Orientation
- Xiaomi Product Launch



ITMA 2023



CLASS OF 20 THE eGRAD 20 EXPECTATIONS

iPtech



OUR PROJECTS



Panasonic
BUSINESS

INFOCOMM
MEDIA
DEVELOPMENT
AUTHORITY



effie
awards
asia pacific

DBS



HUAWEI CLOUD



DXC.technology

RSiS | S. RAJARATNAM
SCHOOL OF
INTERNATIONAL
STUDIES
Nanyang Technological University, Singapore

ESMO GOOD SCIENCE
BETTER MEDICINE
BEST PRACTICE



NUS
National University
of Singapore

Citilink



SG ENABLE



UNIVERSITY
OF MALAYA



REPUBLIC
POLYTECHNIC
DISCOVER. TRANSFORM. ACHIEVE

OUR PROJECTS



OUR OFFICES

Singapore

12 Jalan Lembah Kallang
#06-00 Concorde Building
Singapore 339568

Indonesia

Green Lake City
Rukan CBD Blok E No. 20
Duri Kosambi Jakarta Barat, Indonesia

Malaysia (coming soon)