

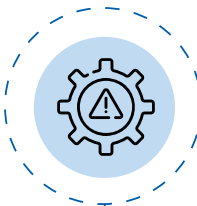
Azure Application Stability Framework

Operating model to reduce MIs, improve SLOs, and ensure resilient customer experiences

Framework Overview

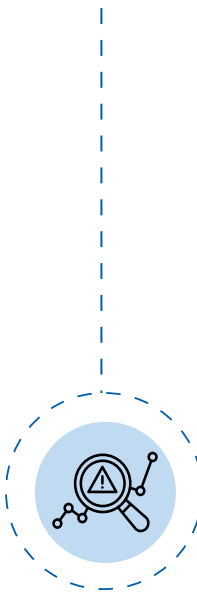


Holistic resiliency model using
SRE + cloud-native patterns



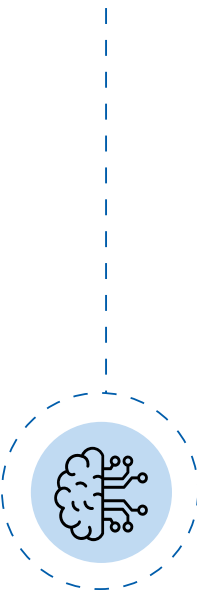
Prevent failures

Detect early

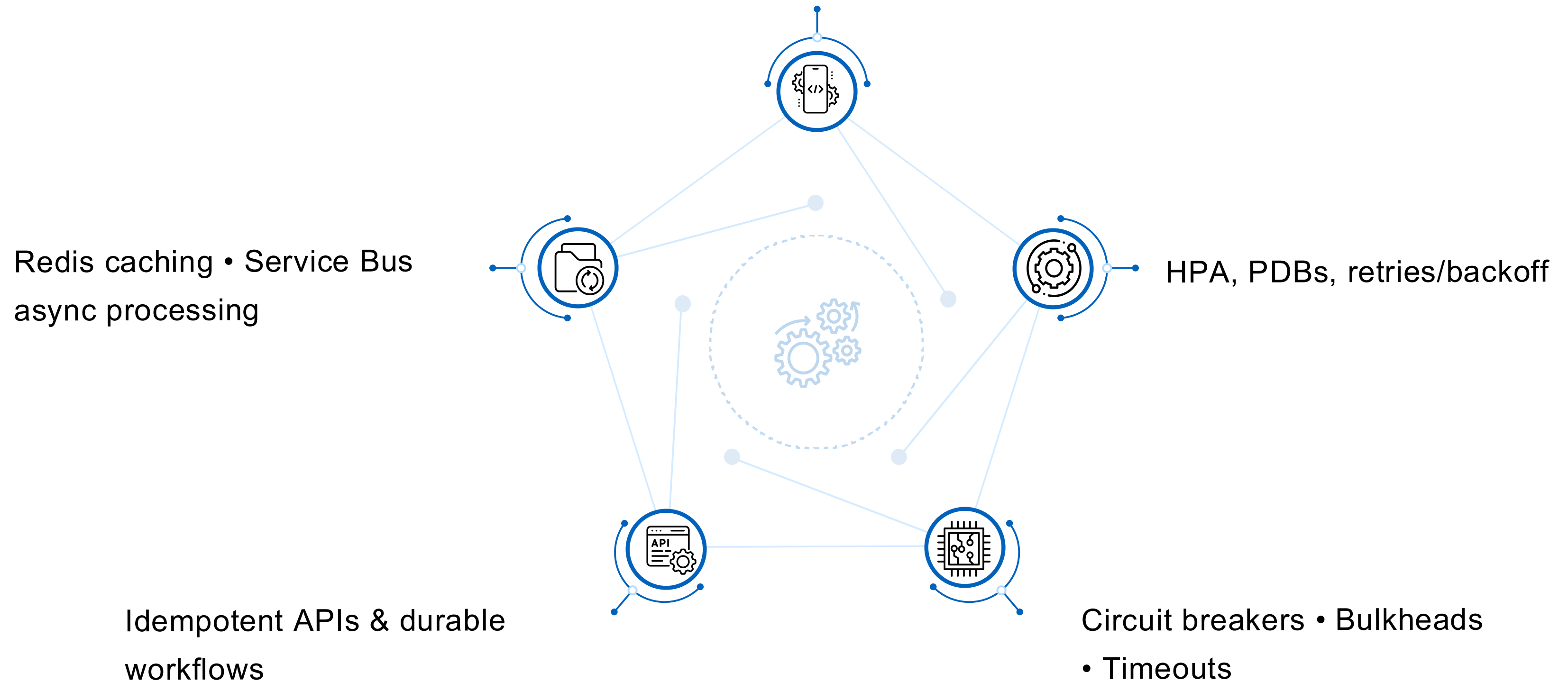


Respond rapidly

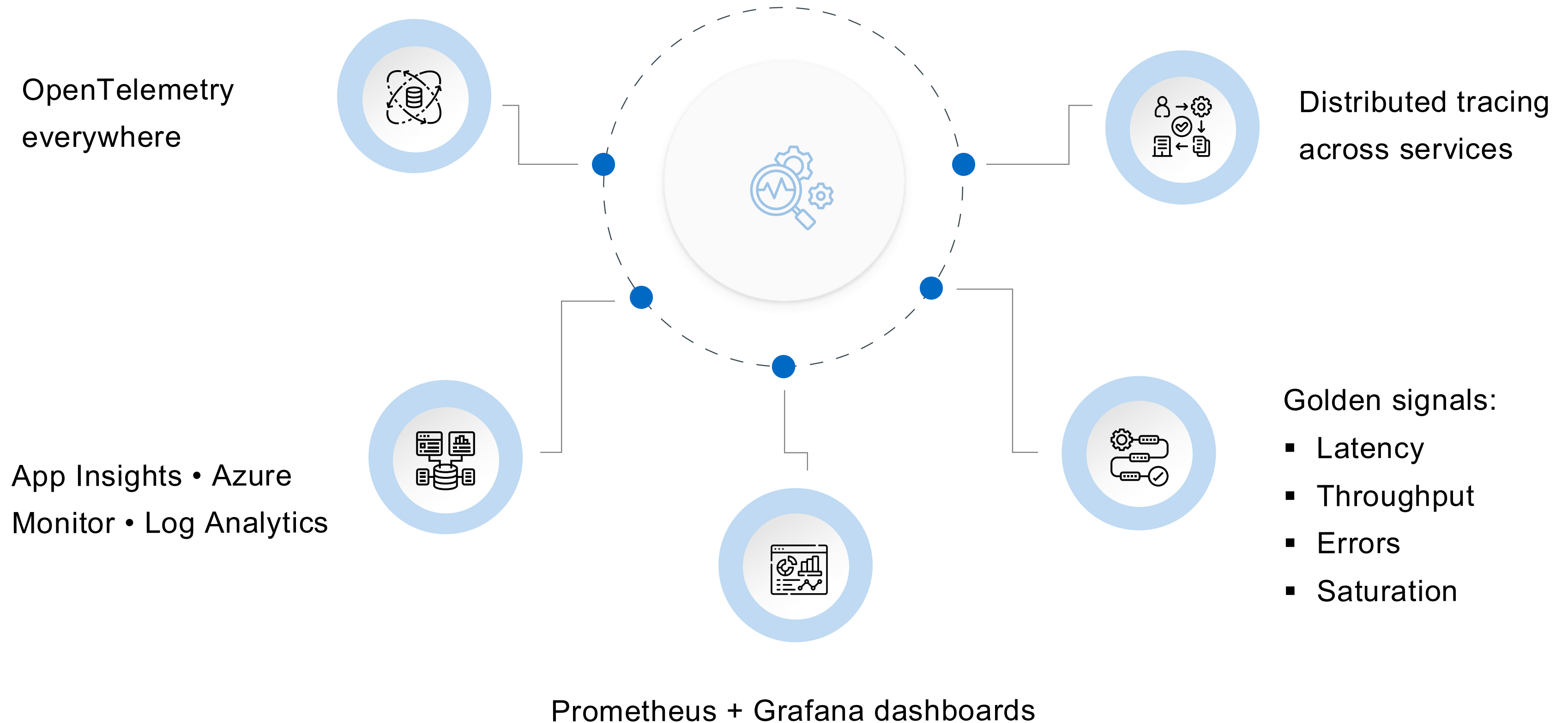
Learn continuously



Multi-AZ AKS & App Services



Observability & Telemetry



Alert rules mapped to SLO/SLA

Auto-remediation: restart, scale, queue cleanup

Synthetic transactions

Log-based pattern detection

Azure Service Health anomaly alerts



Incident prioritization
(P1–P3)



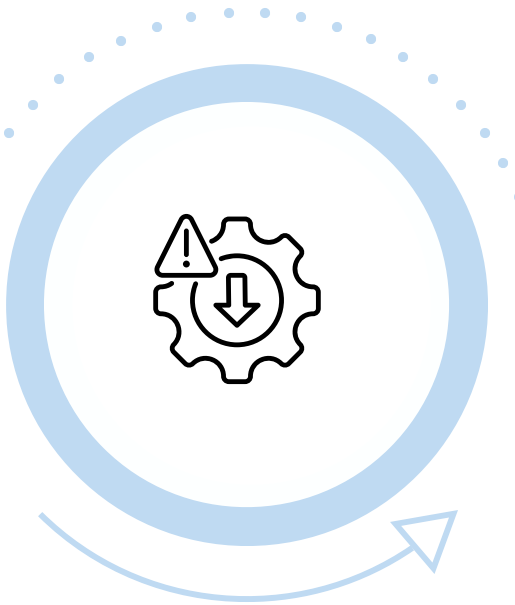
Daily SRE standups



Reliability scorecards
+ runbooks



MTTR/MTTD reduction
playbooks



Weekly stability
reporting



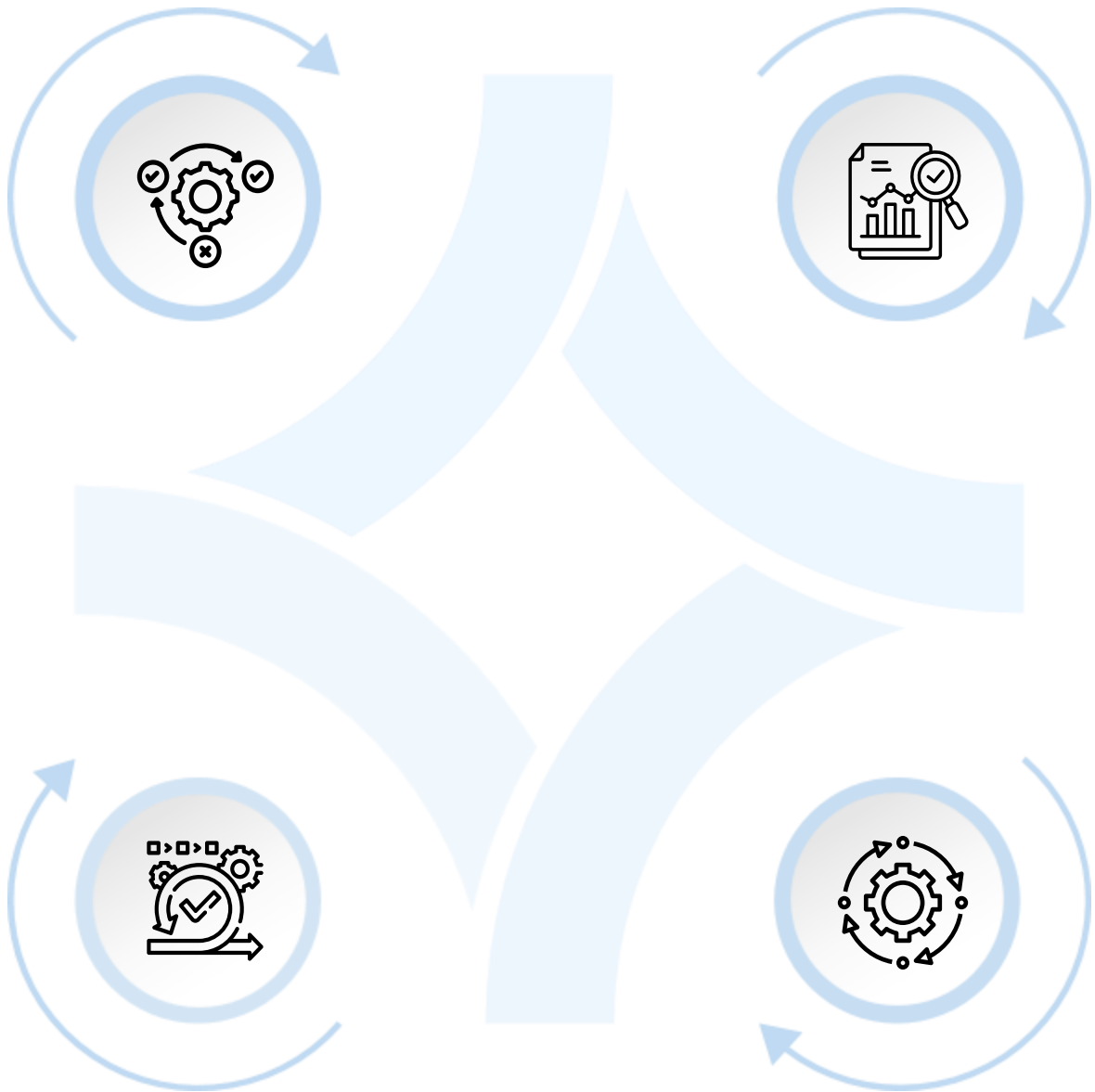
Governance & Continuous Improvement

Post-incident RCA +
corrective actions

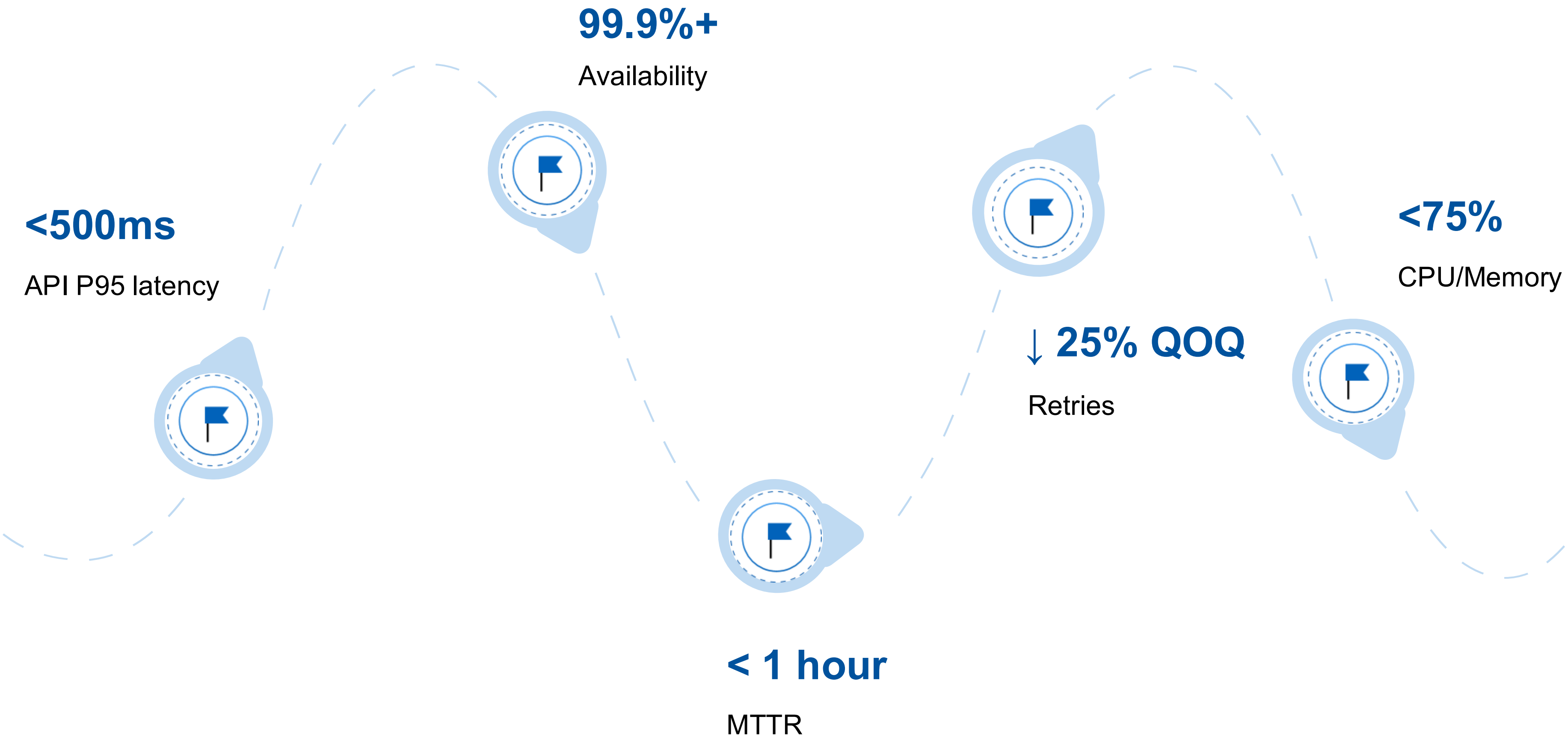
Monthly stability
reviews

Quarterly chaos &
failover testing

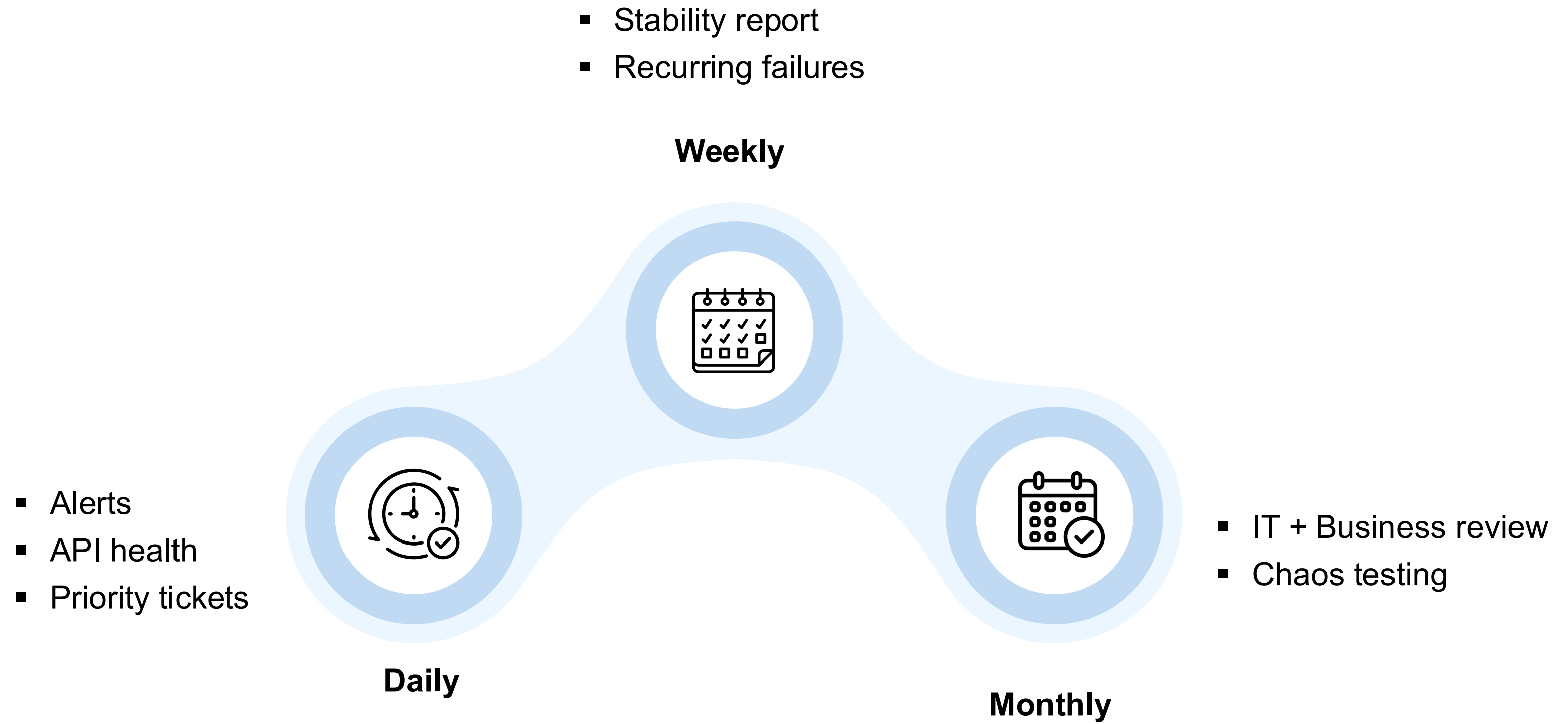
Policy enforcement &
platform governance



Executive Stability Metrics



Operating Model



Technology Stack



AKS Private Clusters



App Services



Service Bus Topics



SQL MI



CosmosDB



Redis Cache



Azure Monitor



Log Analytics



Grafana



DevOps YAML



Terraform/



Bicep



Key Vault

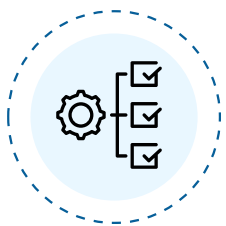


Managed Identities



Azure Policy

30/60/90 Day Roadmap - 0 to 30 Days



Architecture +
incident review

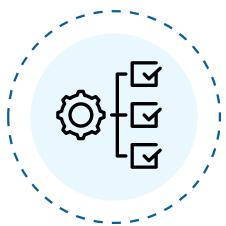
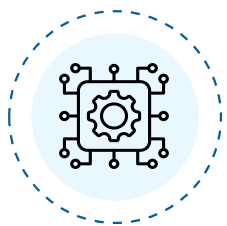
Baseline KPIs &
SLOs

Monitoring & telemetry
gap analysis

Deliverables

- Scorecard
- Top Risks
- Signals Dashboard

30/60/90 Day Roadmap - 31 to 60 Days



Resilience patterns: retries,
timeouts, idempotency

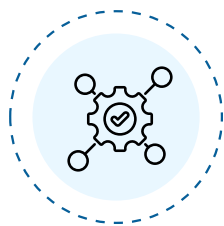
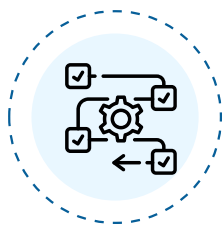
Automated remediation
runbooks

AKS hardening & Redis
tuning

Deliverables

- Hardening pack
- Runbooks
- Performance report

30/60/90 Day Roadmap - 61 to 90 Days



OTel rollout & End-to-end tracing

Multi-AZ validation

Chaos engineering & failover tests

Executive Reliability Dashboard

KPIs & Expected Outcomes



↑ **99.9%+**

SLO availability improved

↓ **20–30%**

P95 latency reduced

↓ **40–50%**

Incident recurrence reduced

↓ **From hours
to minutes**

Mean time to repair reduced

↓ **10–25%**

Azure cost reduced

↓ **30–40%**

Alert noise reduced

Stability Assessment Report

Golden Signals Dashboards

Reliability Scorecard

Auto-Healing Runbooks

Top 10 Remediation Plan

Executive Dashboard +
Modernization Roadmap





Thank You!

Innovate. Simplify. Transform: Turning Ideas into Impact