



**itechgenic**

[www.itechgenicglobal.com](http://www.itechgenicglobal.com)

**AI Powered Tool To Improve Engineering Team Efficiency**

# The Problem

## Distributed teams, Disparate tools

Lack of visibility because of multiple interfaces to manage demand of activities and ticketing of defaults . So there is no single source of truth



## Identifying risk requires manually analyzing vast data

Even if multiple data sources are integrated, vast number of correlated metrics/KPIs have to be manually inspected and analyzed to identify problem/risk areas , which takes days, resulting in decision making done on outdated data . Key impact is cost overruns and delay in deliverable .

# Manually Analyze Vast Number Of Correlated Metrics/KPIs

## Efficiency (Jira, Azure)

---

Throughput, Story Point Completion Rate, Scope Change, Cycle Time, Lead Time, Blocked Time, Flow Efficiency, Cost Variance, Cost Performance Index, etc.

## Engagement (Slack)

---

Pull Requests, Comments, Reviews, Knowledge Sharing, Sentiment, Responsiveness, etc.

## Quality (Git, Sonarqube)

---

Churn Rate, Internal Defects, Escaped External Defects, Customer Tickets, Failed Deployments, Automated Test Coverage, Code Coverage, etc.

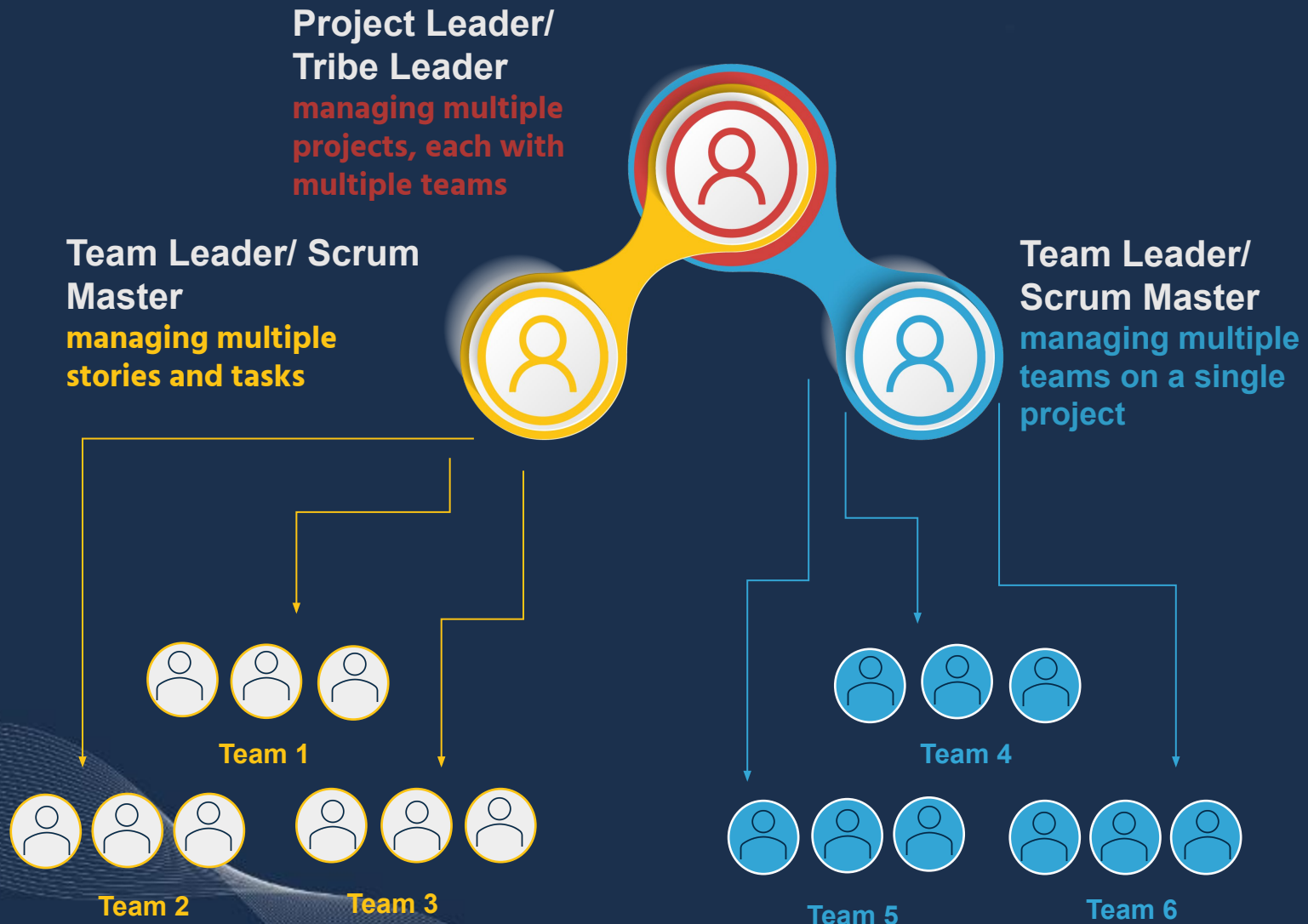
## Utilization (Timesheet, Excel)

---

Billable Time, Non Billable Time, Skill Improvement Time, etc.



# Value Proposition For Multiple Roles/Personas



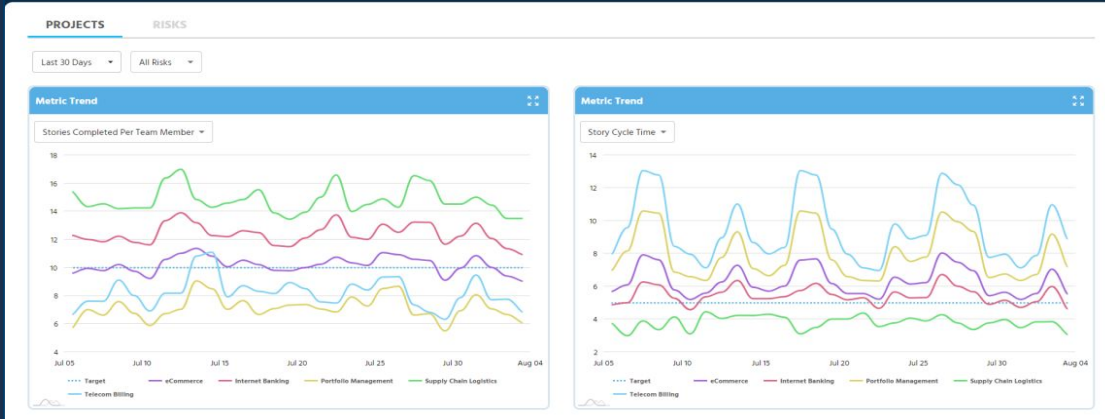
Comprehensive, granular visibility of metrics/KPIs from multiple disparate tools from project level to issue level, helping you save time in reporting and better resource utilisation

Identify engineering risks in real time, helping you deliver on time, on budget and with better code quality

Predict trends of your engineering risks and take action if there is a possibility of risks, helping you stay on track with your business goals and reducing cost overruns

Get daily and weekly alerts into your inbox of the risks that are creeping up within your engineering team

# Itechgenic Solution that brings together data from multiple software tools



The screenshot shows a 'RISKS' dashboard with a table of project metrics. The table has columns for Project, Metric, Value, Target, Deviation, and Risk. The data is as follows:

Project	Metric	Value	Target	Deviation	Risk
Internet Banking	Resolved Defects Lead Time	19	14	36%	Medium
Internet Banking	Resolved Defects Cycle Time	4	3	36%	Medium
Internet Banking	Resolved Vulnerabilities Lead Time	14	10	36%	Medium
Internet Banking	Resolved Vulnerabilities Cycle Time	7	5	36%	Medium
Portfolio Management	Stories Completed Per Team Member	7	10	-29%	Medium
Portfolio Management	Story Cycle Time	8	5	59%	High
Portfolio Management	Story Points Completed Per Team Member	57	80	-29%	Medium
Portfolio Management	Story Point Cycle Time	24	15	59%	High

## Artificial Intelligence Engine

## Data Lake

## Software Tools



# KEY CUSTOMER KPIS



- On Time Successful Release
- Speed to Market
- IT Governace
- Brand Risk and Reputation
- Program Governance
- Better Resource Engagement
- Predictive and Proactive Project Management

# Competitive Analysis

Features	iTechGenic	Klera	Waydev	Pluralsight	Plandek	Analytics Verse
Integrated Dashboard	✓	✓	✓	✓	✓	✓
Project Risk Identification	✓	✓	✗	✗	✗	✗
Project Risk Prediction	✓	✓	✗	✗	✗	✗
Project Recommendations	✓	✗	✗	✗	✗	✗

# Our Unique value Proposition

1. We just don't bring data from multiple tools, which all other competitors are doing , but also map the data across the multiple tools . for example , Jira issue id referenced in the Github Commit . In this way , by mapping across multiple tools, we create contextual insight right from project management tools to CI/CD tools
2. We also identify and predict software development risks that are sitting in your SDLC , which no other competitors are doing
3. We also have an alert system that goes to your email or slack and helps you act as a trigger



# For More Information



**Website**

**[www.itechgenicglobal.com](http://www.itechgenicglobal.com)**



**LinkedIn**



**Office**

**18 Haji Lane #01-101  
Singapore 189211**



**[aninda.mukherjee@itechgenicglobal.com](mailto:aninda.mukherjee@itechgenicglobal.com)**