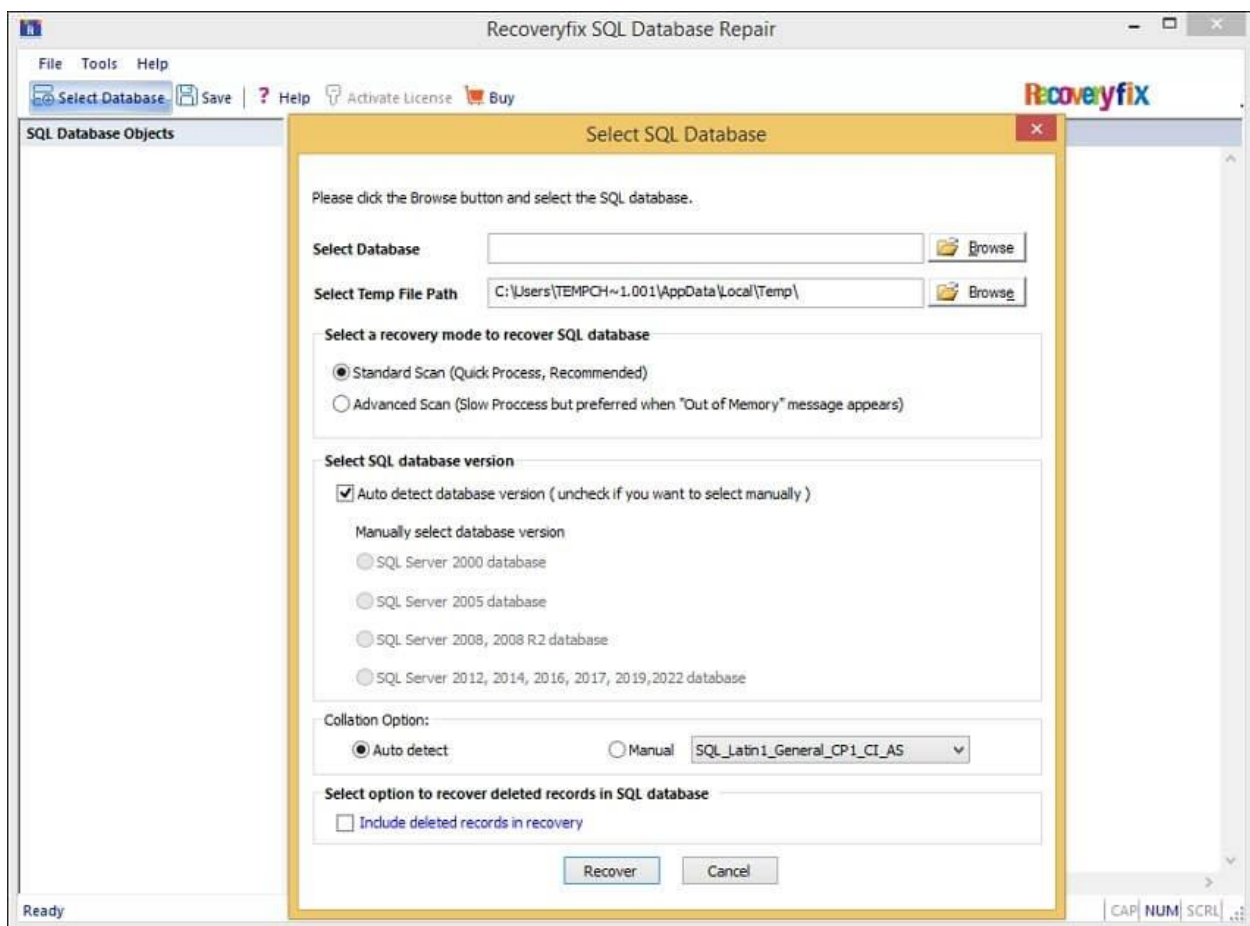


Recoveryfix for SQL Database Repair – How To

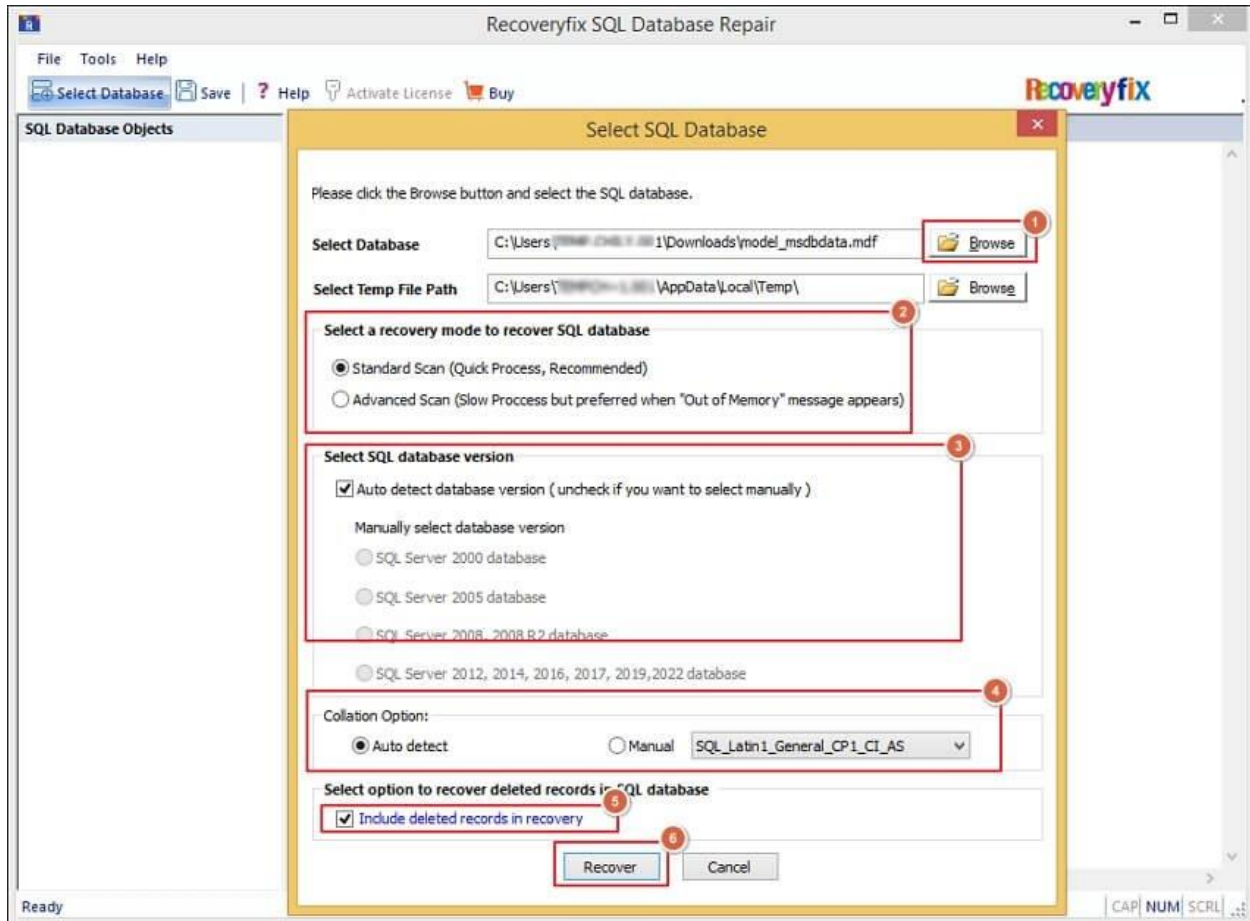
Step 1: Home screen of the software.



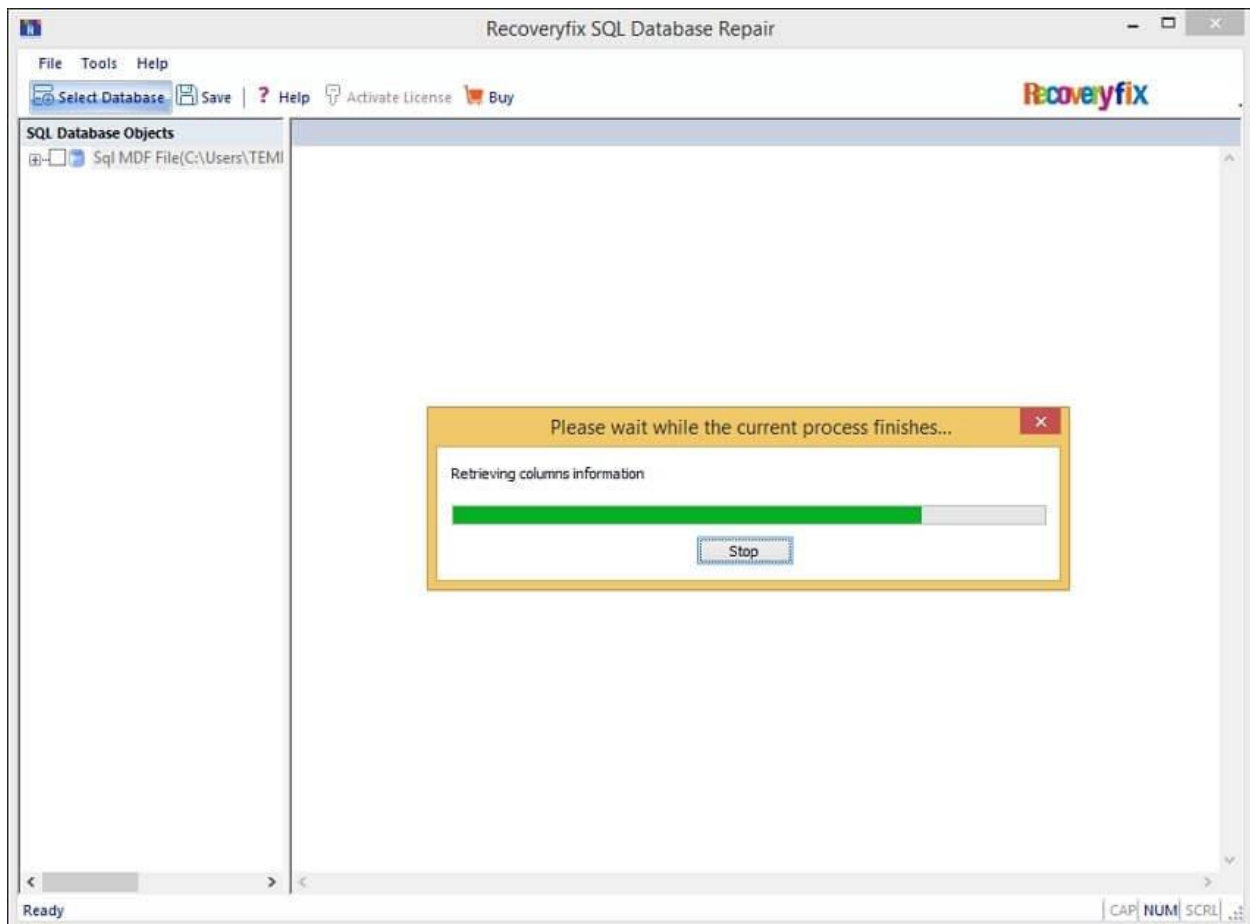
Step 2: Setup the recovery operation.

1. Click **Browse** and navigate to the location where the MDF file is stored and add the database file to the software.
2. Select a recovery mode – **Standard** or **Advanced** Scan.

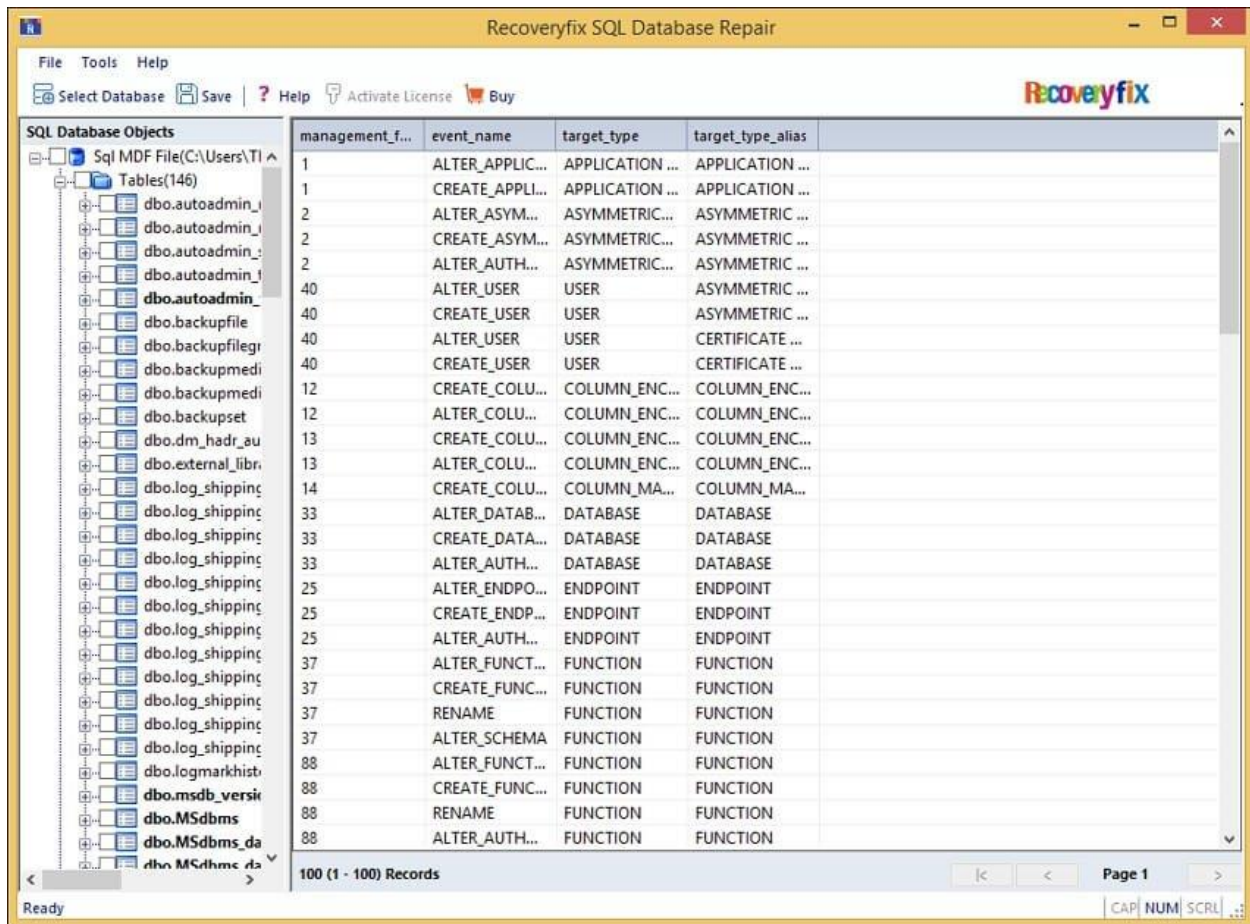
3. Specify the version of the SQL database. You can select it manually or let the tool automatically detect it.
4. Choose to auto-detect the collation type or define it manually.
5. Select the **Include deleted records in recovery** option if you want to recover the lost/deleted data.
6. Press **Recover** to start the recovery process.



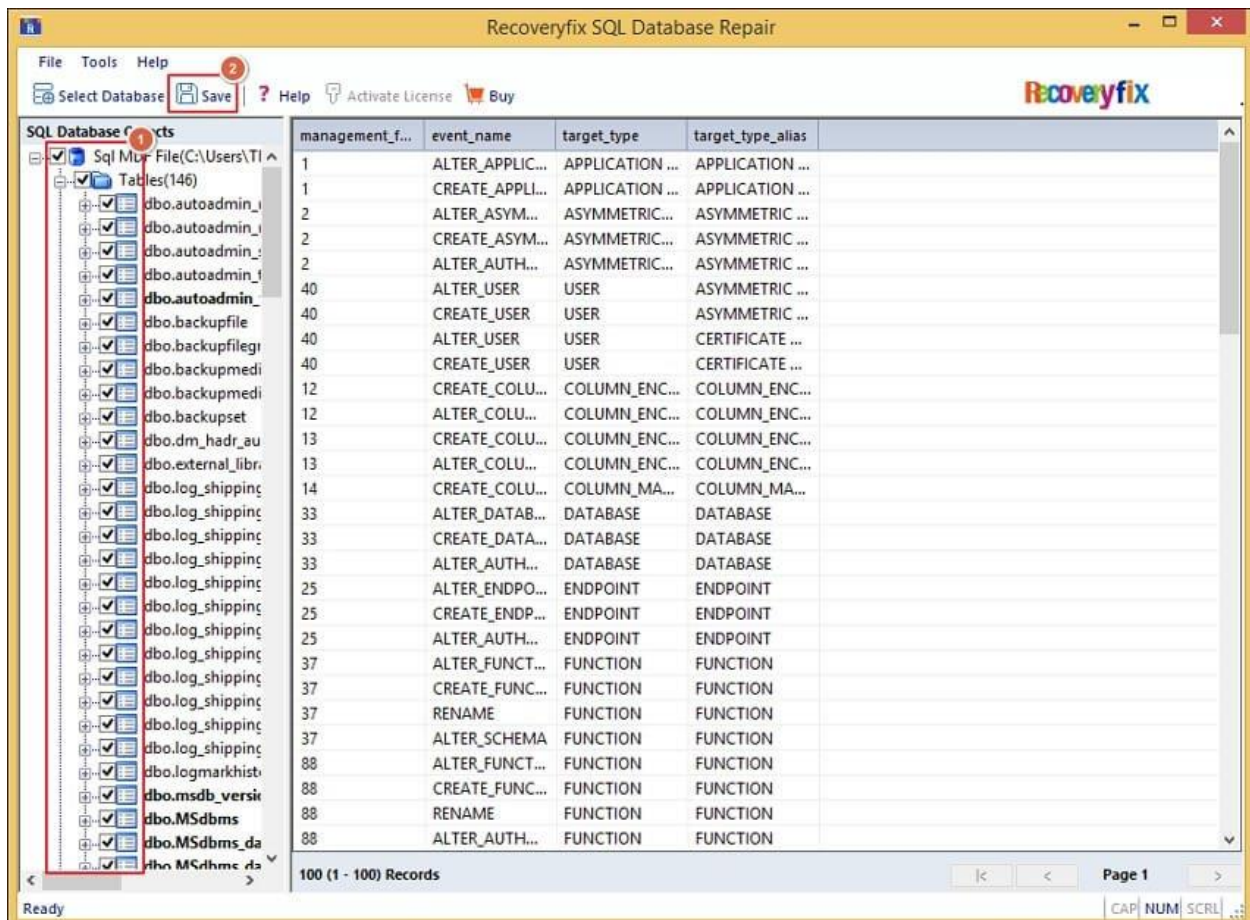
Step 3: The repair process begins.



Step 4: The tool after repairing the SQL database file will list all the folders on the screen. Select any database object to preview it before you save the database.



Step 5: Select the folders to recover and press the **Save** button.



Step 6: The tool has three options to save the data.

- A. Save directly to SQL Server. You can save recovered data in an existing SQL database or create a new database through the software.

