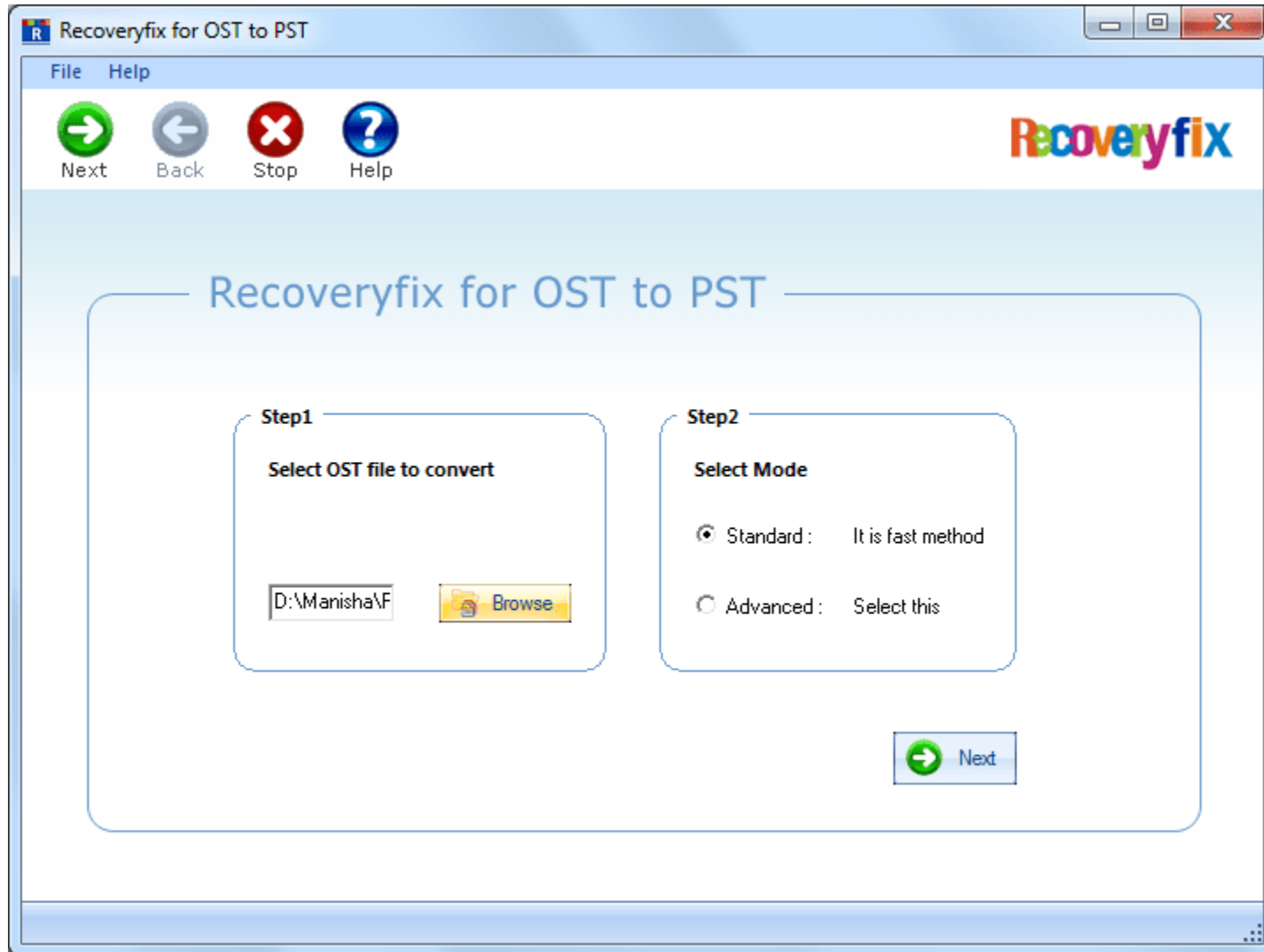


OST to PST Converter Screenshots

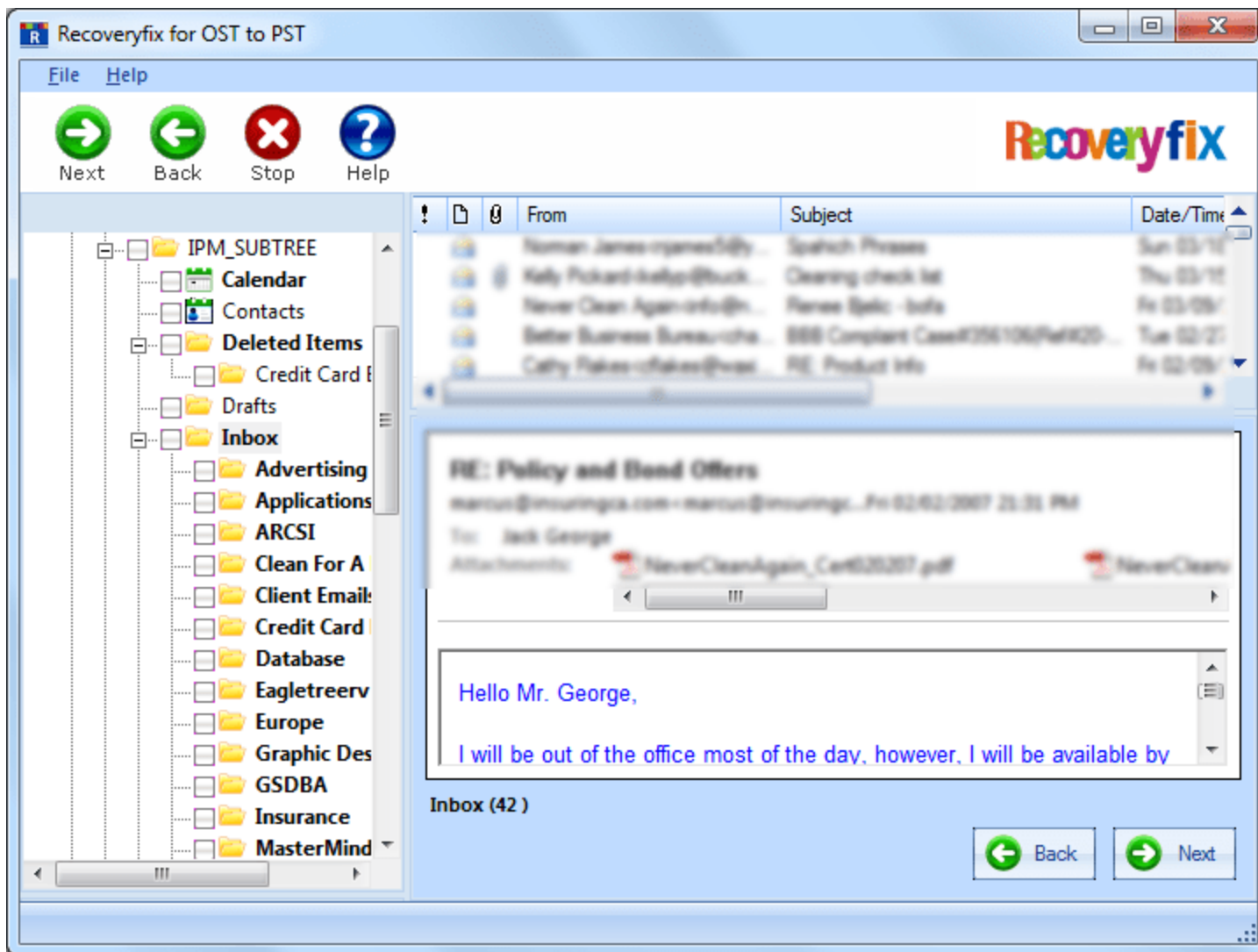
step-01

Select OST file and OST file scanning mode



step- 02

Preview of OST items before OST to PST conversion



step- 03

Conversion options in OST to PST tool Outlook (PST & MSG) and Outlook Express (DBX and EML)

Saving Options

Select the output type to save the recovered data

☒ **Save In Outlook**
Save the recovered data in Microsoft Outlook.

☐ **Save In Outlook Express**

Select the MS Outlook format to save the data

☒ **Save in PST**
Save data in new PST file(s).

☐ **Save in MSG.**

Select location to save PST file(s)

Saving Path

Click Browse and select a location to save PST file

Split Option

Use dropdown list to split the new output pst file.

☐ **Remove "IPM_SUBTREE" from hierarchy in Outlook**
Select this option to remove "IPM_SUBTREE" from folder hierarchy

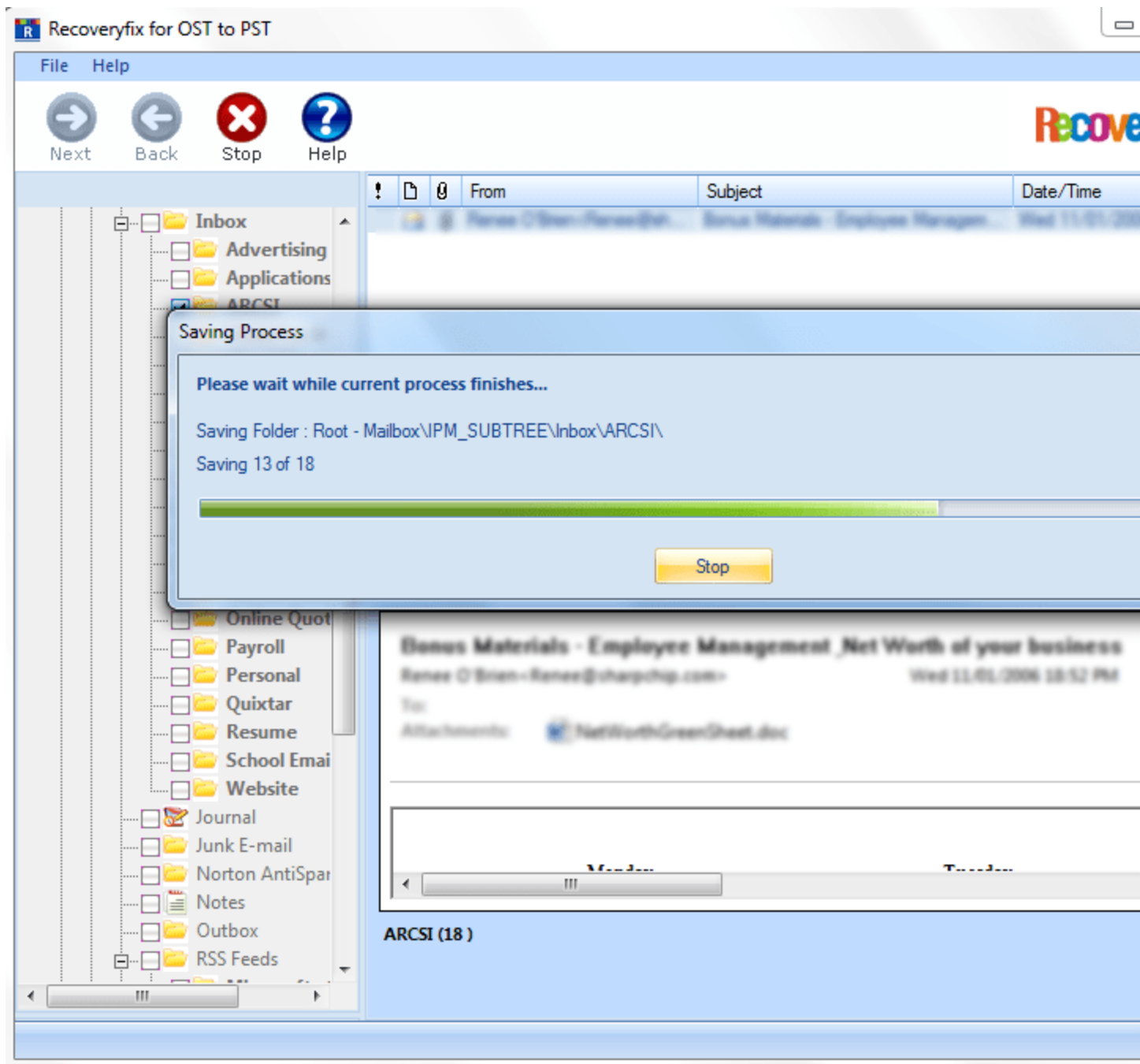
☐ **Attach Prefix To Store Name**

Store Name Prefix

Select "Attach prefix to store name" option to add prefix to store name that will be visible in Ms Outlook.

step- 04

OST to PST conversion in progress



step- 05

Successful OST to PST conversion

