



# Knowlepsy

Empowering Neurology prevention with  
Real-World Data Analytics.

# Insufficient neurological data weakens the entire health ecosystem

*"70% of neurological data remains unrecorded outside hospital settings, leaving providers with incomplete information to manage treatment effectively. This leads to poor decision-making, high costs, and inadequate patient outcomes."*



## Drug development

**Lack of comprehensive real-world insights** necessary for robust clinical studies.



## Clinics & Hospitals

**Inability to synchronize data with disease pattern** outside of Hospitals, and thus failing to address chronic diseases



## Neurologists

**Difficulty identifying patient-specific triggers** and proposing accurate treatment management

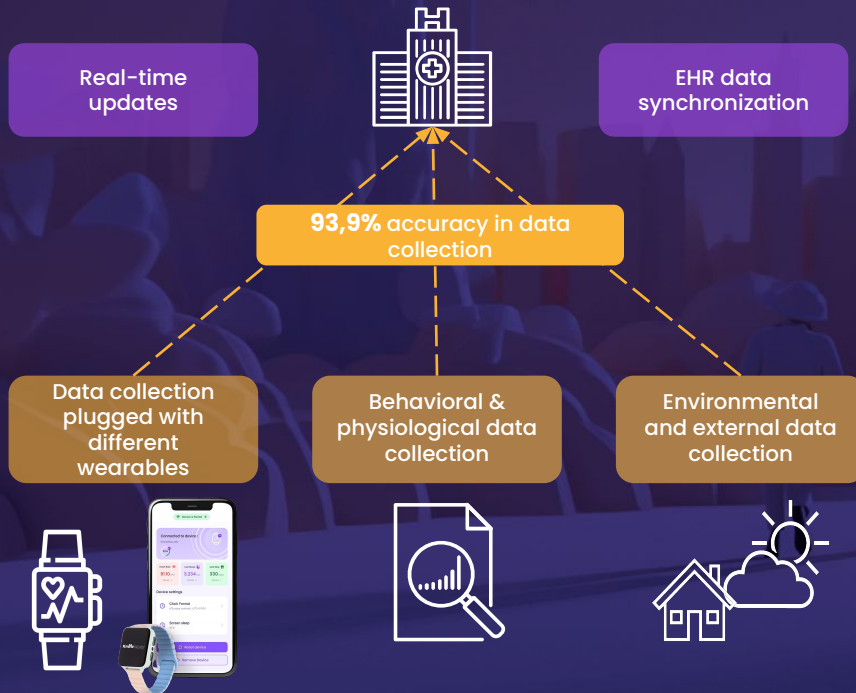


## Patients & payers

**Difficulty understanding disease fluctuation's triggers**, associated with high cost of treatment and hospitals

# Empowering care through real-world patient data for personalized treatments

## Real life data collection and synchronization



## Integrated data treatment & visualization

### AI-powered platform predicts neuro chronic diseases' Triggers

Knowlepsy revolutionizes neurology care by leveraging AI

- **Deliver Predictive Analytics:** AI algorithms analyze physiological, behavioral, and environmental data to **predict patient-specific risks and optimize treatment.**
- **Automate Trigger Detection:** Advanced machine learning identifies patterns and correlations, enabling proactive care within 6 months.
- **Personalize Treatment Plans:** Adaptive AI tailors therapies to each patient's unique needs, **improving clinical outcomes and reduce hospitalization cost.**
- **Enhance Clinical Efficiency:** AI-powered dashboards streamline decision-making, **giving clinicians more time to focus on patient care and R&D for Pharma**

# Leveraging proprietary IP and flagship partnerships for comprehensive data and treatment solutions

## PHONE DATA



**Data scraping** from environmental risk factors (exp: weather, mobility, menstrual cycle) through Knowlepsy app

## USER Behavioral HEALTH FOCUS



**Allows a 360° health analysis** through continuous monitoring of health interest based on social media behavioral interaction patterns **Via LLM**

## PHYSIOLOGICAL DATA

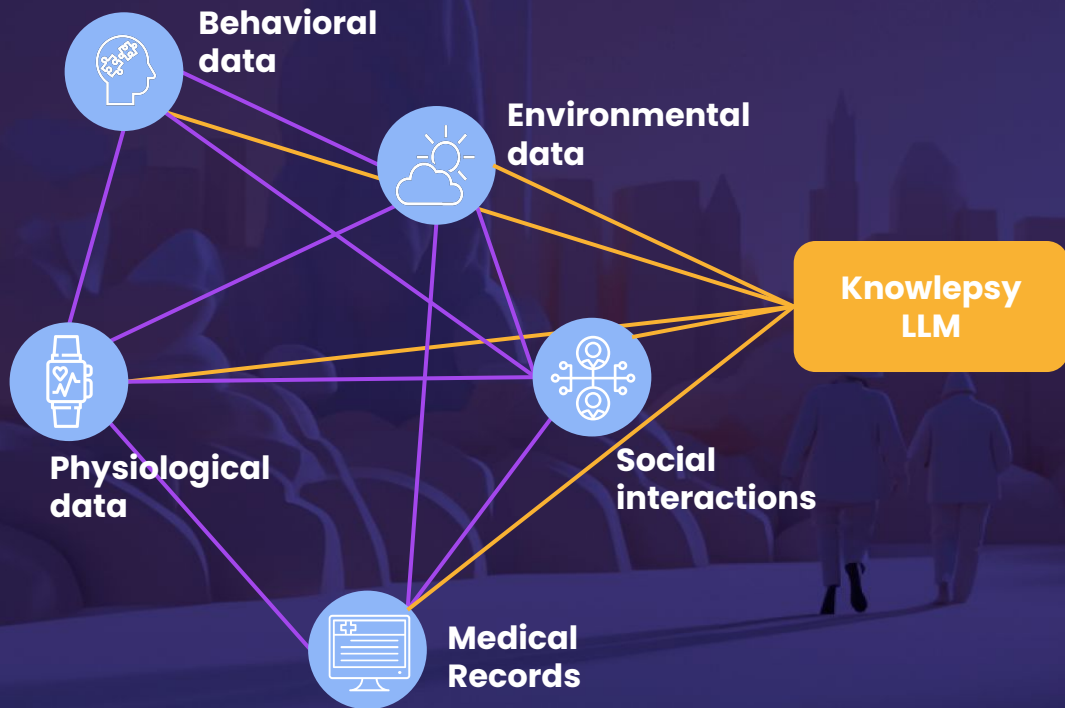


**Sensor collected data:** heart rate, movement, temperature, stress scoring, physical activities data, sleep scoring, mood

## R&D partners



# Knowlepsy's Large Language Model (LLM) derives key insights from unchartered real-world data **Exclusively with Microsoft**



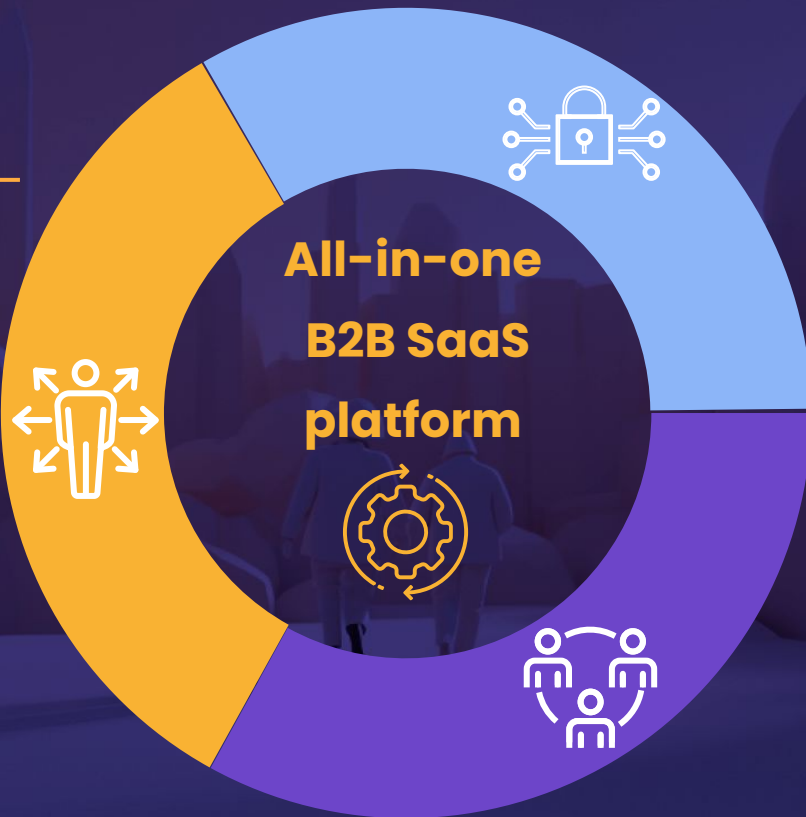
- 1** Trained on epilepsy cases and extendable to strokes, migraines, and precision medicine
- 2** Uncover correlations & create actionable patterns
- 3** Scalable framework for addressing chronic neurological diseases

# Transforming healthcare with a platform for collecting & visualizing & forecasting neurological data

## Patient-Centered Innovation

---

We prioritize **patient outcomes** by driving innovation through advanced technology and **real-world personalized data**



## Data Integrity and Security

---

We ensure the highest standards of **data security and integrity**, always protecting sensitive health information

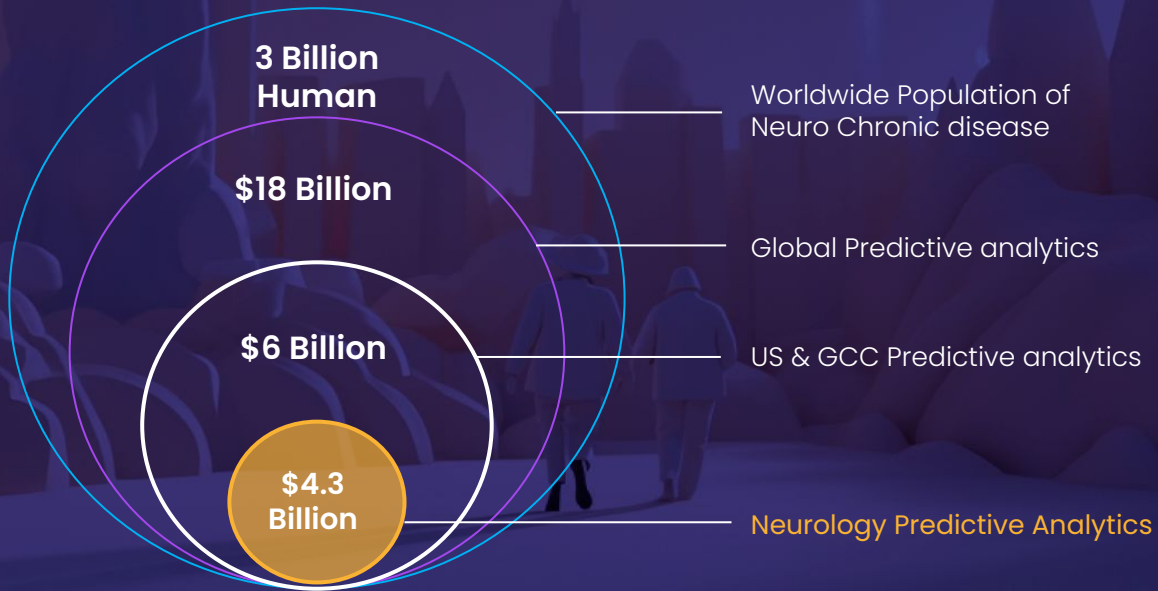
## Collaborative Excellence

---

We work closely with **healthcare stakeholders** to deliver seamless, effective solutions that enhance care and **operational efficiency**

# Predictive analytics for neurological chronic diseases represent a largely untapped market

## Chronic Disease Patient Population & Predictive analytics



# Driving resilience and value with diversified and recurring revenue streams

## Knowlepsy Offer B2B AI-enabled Saas



### Key Features:

- **Holistic Patient Profiling:** Combines data from wearables, behavior, and external factors for a comprehensive health view.
- **AI-Powered Risk Predictions:** Detects patterns to prevent seizures and other neurological events.
- **Device Agnostic:** Compatible with any wearable, ensuring flexibility.

### Benefits:

- Enhances patient outcomes with real-time, actionable insights.
- Reduces costs through early intervention and risk management.
- Supports data-driven decisions for optimized care strategies.

Hospitals & Clinics



**Subscription based**  
model with recurring  
payments



Doctors

**Partnership model**  
with doctors, which  
refer subscriptions  
to their patients

\*Model Applied only in Africa

Pharma & Research



**Data monetization** for  
Pharmaceutical  
companies,  
Insurance,  
Research centers

Direct  
B2B

Indirect  
B2B2C

Shared  
infrastructure

**Data integration across revenue  
streams enables software's  
self-reinforcement**



Questions?  
Let's get talking.

Firas Rhaïem  
[frm@Knowlepsylespsy.com](mailto:frm@Knowlepsylespsy.com)  
+33 (0)6 211 416 20

 Facebook  
 Instagram  
 LinkedIn

[Knowlepsy.com](https://www.knowlepsy.com)