

The Kobiton Cloud & Mobile Lab

Real devices—however you want them

The infrastructure issue

Mobile experience presents new levels of difficulty when it comes to where and what you test on. With the current (and future) environment calling for a rapid shift to the cloud, and some industries still requiring strict on-premises deployments due to risk around Intellectual Property and sensitive data, teams need deployment options that offer flexibility and easy access.

However, this doesn't always come easy, and many teams end up facing several major challenges when trying to implement deployment and device management strategies that actually *make sense* for their business.

Challenges

RIGID DEPLOYMENT OPTIONS

Teams lack options to balance both a “get to the cloud fast” with a sometimes-necessary locked-down OnPremise approach.

EMULATORS ARE A LET DOWN

Emulators don't allow you to test for crucial variables such as touch screen gestures, battery issues, connectivity, and other real-time data like GPS.

DEVICE LAB CHAOS

Teams struggle to manage disparate devices—some in public clouds, private clouds, and some in-house under lock-and-key.

Business implications

Rigid deployment options stifle growth, reduce speed, and raise overall costs.

Crucial issues are left unresolved and end up causing poor customer experiences in the real world on real devices.

Slow delivery of customer value means loss of market share to higher-performing competitors.

Real devices, however you want them

Get to the cloud fast and keep your Intellectual Property secure

We aren't going to make you deal with emulators. We also don't think you should have to ever take an "all-or-nothing" deployment strategy. With Kobiton, deploy how you want, whether it's in the Kobiton device cloud or locked up in the Mobile Lab.



Flexible Cloud + Mobile Lab

Choose from public, private, local, or hybrid cloud options. And for teams who need our Mobile Lab cart, we have that too.



Real devices only

Test on the devices that your customers actually use –and nobody requests an Uber on an emulator.



Device Lab Management

Tame device chaos with a single console from which to manage all of your devices. Every. Single. One.

Kobiton's deployment options

Kobiton offers the utmost flexibility when it comes to how you want to deploy and manage real devices both in the cloud and on premises.



What are the differences?

Here's some honest information on how you can make the best deployment choice for your business:

Public cloud (Shared Access)

Test on devices you don't have in the Kobiton Public Cloud with access to over 350+ shared iOS and Android devices.



The public cloud is best for when your teams might need quick access to certain devices that you don't currently have. Perfect for 'edge case' testing or for broad market coverage testing.

Private cloud (Exclusive Access)

Add private devices to your test cloud that allow for secure VPN access and eliminate your need to share device use with anybody else. We can manage your own devices or happily procure devices for you.



The private cloud is best for your teams who need "always on" access to devices reserved exclusively for them, without the headache of managing devices. The private cloud is also a great option for teams who want to use our revolutionary scriptless test automation, as you'll have constant, unshared access to devices for running your automated tests.

Cloud-ified local devices

If you've already made an investment in local devices, no problem. We can get those into the cloud for you quickly and without any extensive additional hardware.



Cloudified local devices are great for your teams who have already made an investment in local devices and want to continue to earn an ROI on that investment. This is also a great option for remote teams who didn't previously have access to devices hosted locally, enabling globally distributed access.

Hybrid cloud

For a true unparalleled testing lab, combine any of our cloud deployment options together.



This is best for teams who may have a variety of needs, including protecting their local device investment, needing always on access to high priority devices, and needing certain un-owned devices from time to time.

The Kobiton Mobile Lab

Keep certain on premises devices under literal lock-and-key with the Kobiton Mobile Lab.

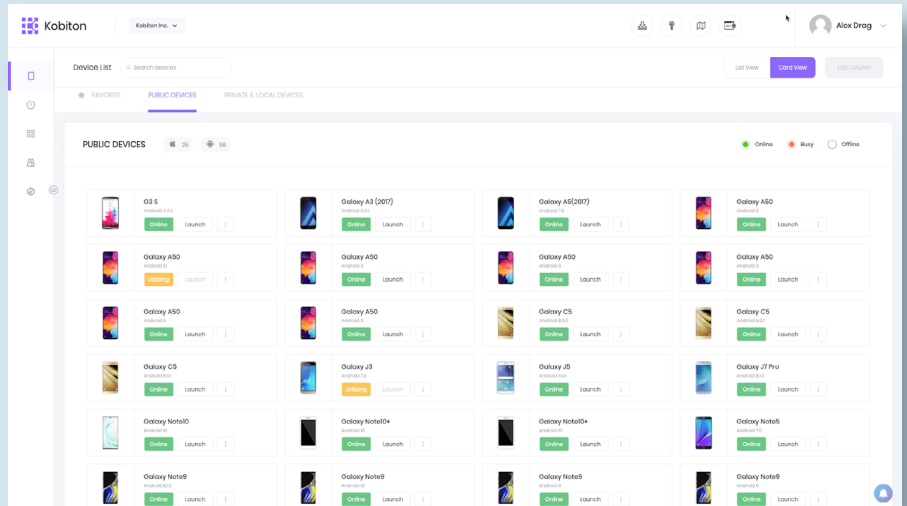


This is best for your teams who may be working with extra sensitive Intellectual Property and/or extra sensitive data, such as the brand new Pokémon game!

Kobiton Device Lab Management

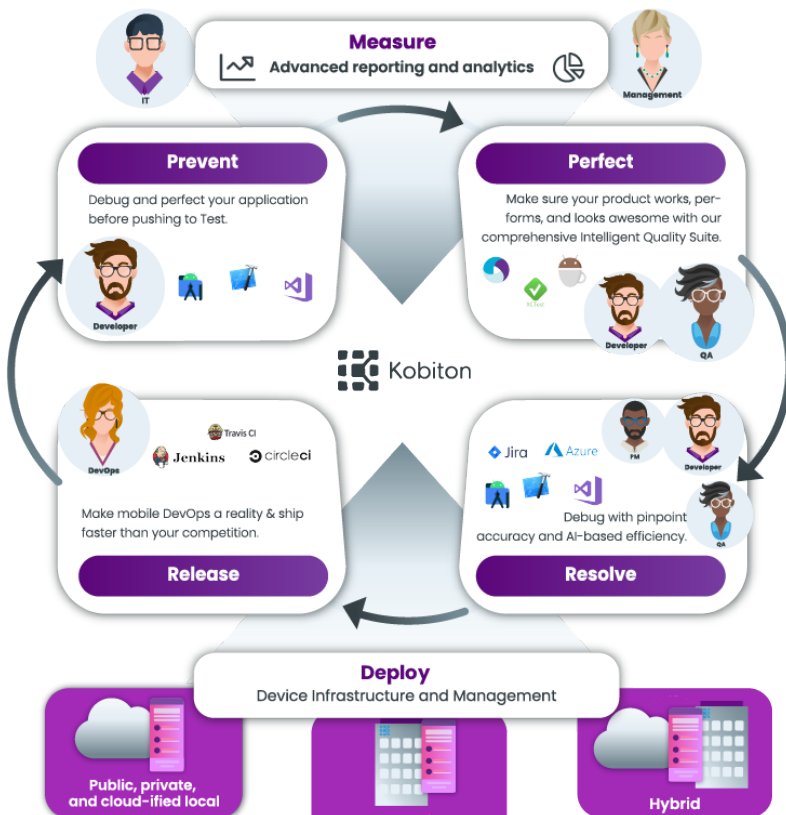
Tame device chaos *at scale*

Distributed devices meets centralized management with Kobiton DLM. No matter how you deploy, rest assured that you'll be able to orchestrate all of your real device access and testing—from a single console.



And we are MORE than just a device lab

Your comprehensive mobile experience platform



While deployment and devices are important (that's why we offer the most flexible deployment options that you'll find), mobile teams also struggle with other challenges, such as the inability to get to scalable automation and make mobile testing truly continuous.

Unlike traditional vendors, who almost exclusively focus on infrastructure, we made sure to build a platform with the whole team in mind. With solutions that range from ADB debugging to automated functional, visual, and performance testing, only Kobiton offers a true comprehensive mobile experience platform.

But don't just ask us.

Our customers *love* Kobiton.



// We are able to run long-running automation suites—12 hour runs every night. That's a very difficult thing to do on physical devices here in-house, because somebody has to hook them up and nobody wants to be here for 12 hours. Without Kobiton, we wouldn't test as much as we do."

- Jan Acosta, Senior Manager of Quality Enablement, Q2

// The thing I like most about the Kobiton platform is the ease of use. It's been absolutely fantastic to be able to just log in, grab a device, be able to have access to all of the logs, all of the recording, and everything."

- Mason Dula, QA Engineer, GreenSky

Interested in giving your mobile app a shot of awesome? We are, too.

Contact us today at info@kobiton.com or through our website at www.kobiton.com for more information on requesting a demo or free trial.