



KONGSBERG

Kognitwin® - Your Industrial Work Surface

Kognitwin places the user at the center, regardless of discipline or function, enabling an intuitive and efficient data-driven experience that drives value across a broad range of business benefits

One Global Environment...

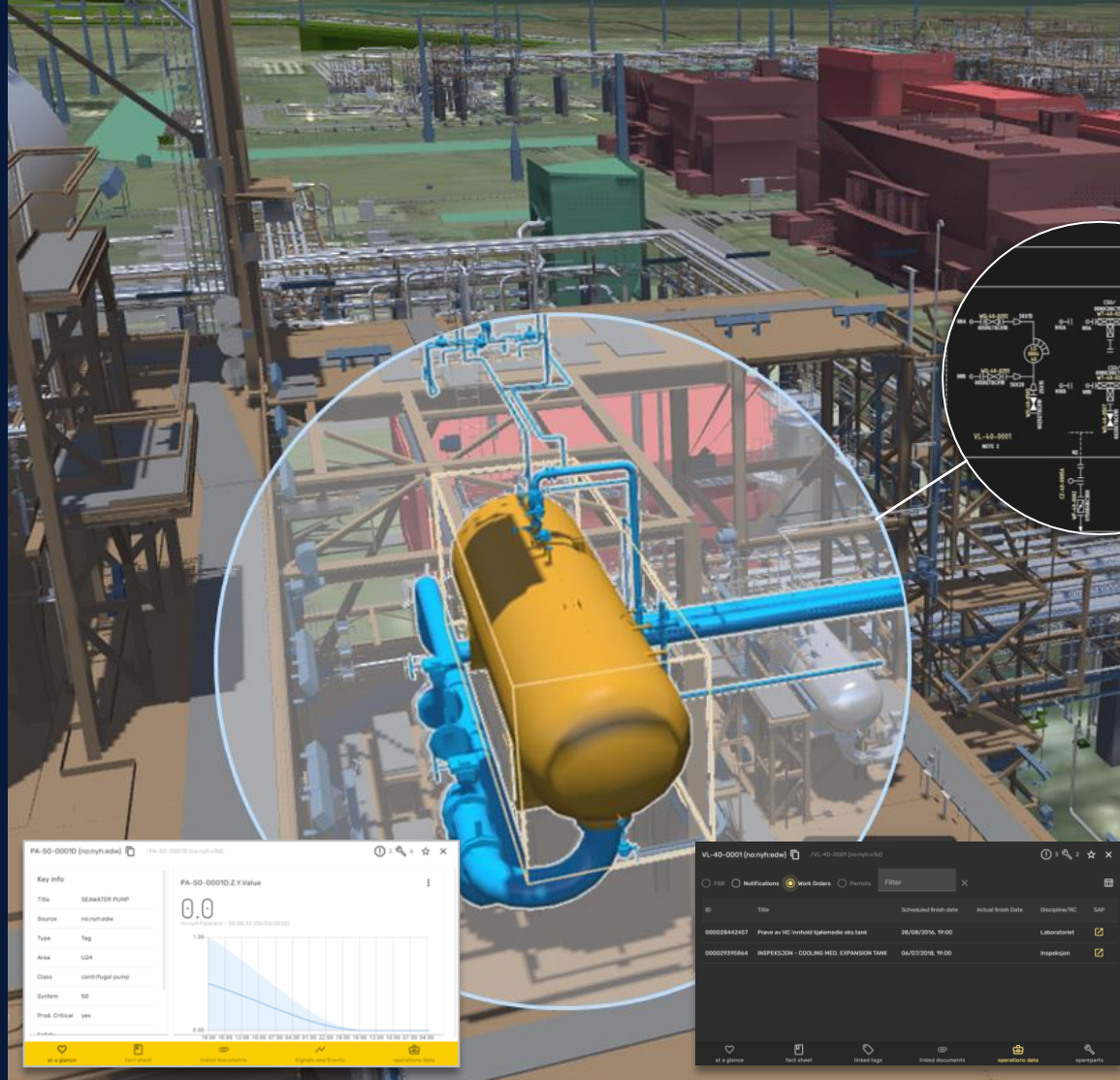
An integrated space for all of your assets to drive insights, plan activities, monitor performance, optimize your facility, and ensure safe operations



...fully Contextualized IT & OT Data...

Interoperable platform that can ingest and contextualized any data

- ↳ 3D Models, Laser Scans, 360 images
- ↳ Real-time & Historic Data
- ↳ Engineering Documents
- ↳ Maintenance & Inspection Data
- ↳ Permitting
- ↳ Process Models



Rich Data Driven Visualizations ...

Move seamlessly between 2D/3D models that bring together data from multiple sources enabling new capabilities

- Live P&ID
- Simultaneous Operations
- Risk Visualizations
- Isolation Planning

...powered by advanced analytics and simulation

20 years of industry leading simulation and modelling experience powering the dynamic digital twin

- Proactive Technical Monitoring
- 'What-if' scenario planning
- Predictive Failure Analysis
- Control Loop Monitoring
- Virtual Measurements



VL-40-0001 (from htw)

Filter

ID	Title	Scheduled Break date	Actual Break Date	Discipline/RC	SAP
00003843017	Power by HC Inboard Spinnacole sea tank	26/06/2016, 19:00		Laboratory	
0000393684	INSPECTION - COOLING MED. EXPANSION TANK	06/12/2016, 19:00		Inspection	



KONGSBERG

Kognitwin Safety Highlights



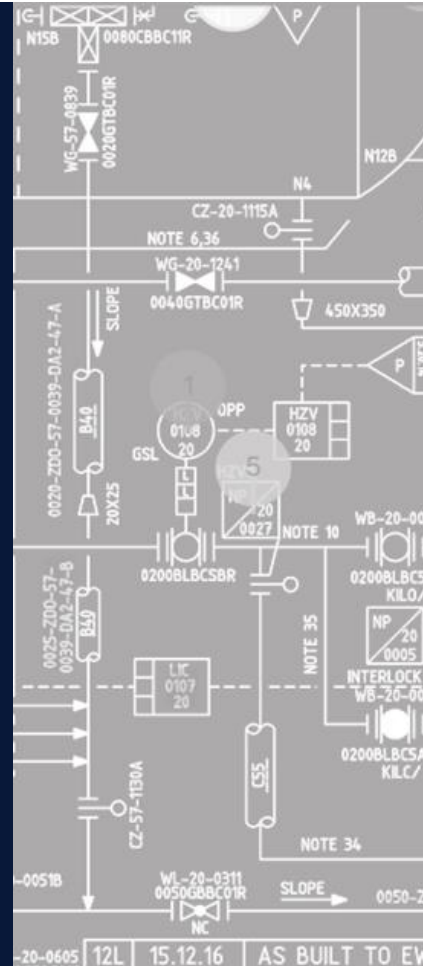
ACCESS TO INFORMATION – Kognitwin provides users with access to accurate information about an asset enabling work planning and asset monitoring in one intuitive space.

- Asset Integrity & Maintenance History
- Engineering Documentation
- Process deviations
- Live P&IDs

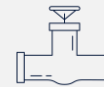


WORK PACKAGES – Ensuring that your workforce has access to the right information required for executing a maintenance activity safely and efficiently. Kognitwin enables users to assemble work packages with information across systems and associate them with a work order. Typical elements include:

- Notification / Work Order
- Technical documents and specifications
- Job specific details and safety information
- Operating Procedures



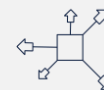
ISOLATION PLANNING – Fully digitalize isolation management capabilities that enable users to build out an isolation plan using P&IDs, 3D Models, and contextualized data. Building isolation plans can be done by manually selecting points, choosing a positions and corresponding actions manually or using AI to generate a plan that can be updated by the user.



VALVE PERFORMANCE MONITORING – The Kognitwin Valve Performance monitoring capabilities use time series and event data to model valve health and predicted life.



PROACTIVE TECHNICAL MONITORING – Enable users to configure an operational envelope for equipment that can be monitored to ensure processes are optimized and operating safely.



SIMULTANEOUS OPERATIONS (SIMOPS) – SIMOPS brings together scheduled work activities across multiple systems into a 3D visualization that helps with planning and execution. The user will be notified in the event of conflicts such as hot work occurring in sensitive areas (hydrocarbons in atmosphere).



CUMULATIVE RISK VISUALIZATION - Kognitwin aggregates risks / threats and visualizes them into 2D and 3D visualizations. A Barrier Model of organizational, operations and technical barriers can be configured.