

kyndryl.

Kyndryl Skytap Assessment

Kyndryl Consult

September 2024

Kyndryl /Microsoft Partnership

We help businesses accelerate the modernization of applications, infrastructure and hybrid work to drive operational excellence and achieve rapid business outcomes.



kyndryl.

 Microsoft

Modernizing and managing the world's mission critical IT

Trusted integrator and innovator with the scale and expertise to advance vital systems and power progress with responsible enterprise-grade GenAI.

Leading secure cloud technologies in the GenAI era

Most trusted and secure cloud provider offering market-leading core technologies with a tailored industry focus, empowering the world to achieve more with AI.

Together we power progress

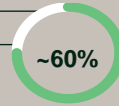
Why customers choose Kyndryl with Microsoft

Our Customers

We work in partnership with thousands of customers, dedicated to ensuring that each achieves its peak digital performance

>4,000
global
customers

Including
of the Fortune
100; more than
half of the Fortune
500



Providing undisputed leadership



6.1M mainframe
installed MIPS



3.5M LAN
ports managed



300K network
devices managed



5,200+ WAN
devices managed



67K+ VMware
systems managed



14K+ SAP
instances managed



3.5+ exabytes of customer
data backed up annually

Modernizing and managing the world's mission-critical systems

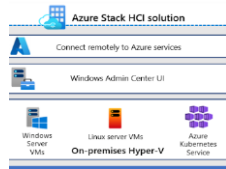
Enterprise AI Services



Azure VMware
Solution (AVS)



Mainframe
Modernization



Azure Stack
HCI + ARC

SAP on Azure



Digital Workplace
Services (DWS)



Cyber Incident
Recovery



Kyndryl Services



Cloud

Delivering seamless advisory, migration, modernization, and management services integrated with Microsoft Cloud



Core Enterprise & zCloud

Manage mission-critical workloads seamlessly by modernizing mainframes to handle high-volume, always-on computing with Microsoft AI Cloud



Digital Workplace

Accelerate hybrid work and enable collaboration from anywhere with strategy, design, architecture and implementation of Copilot for M365



Application, Data & AI

Providing full application platform hosting and expert assistance for application modernization and GenAI on Microsoft Azure



Network & Edge

Provides unified Network Services for Microsoft Cloud and data center connectivity



Security & Resiliency

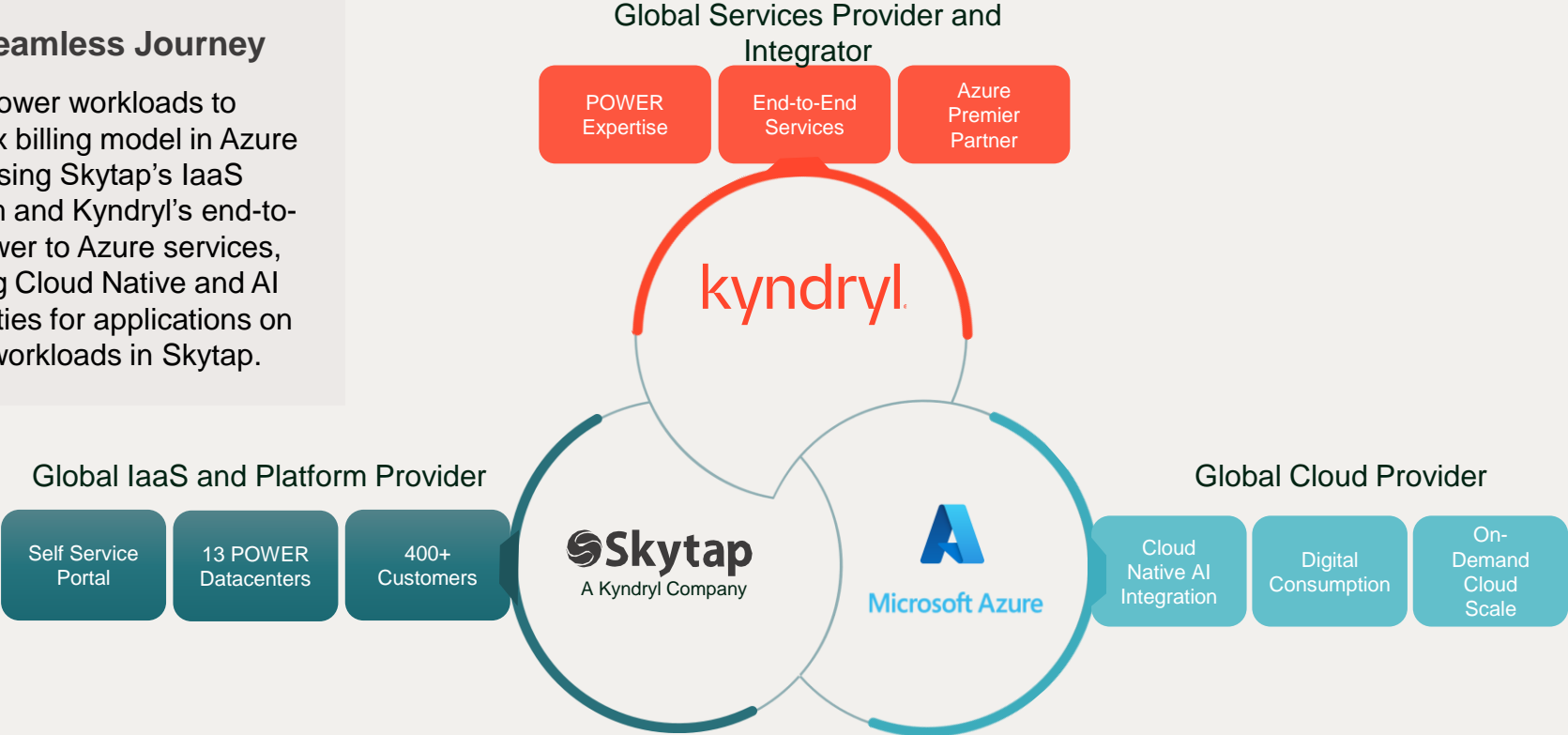
Providing full application platform hosting and expert assistance for application modernization

Kyndryl advances the vital systems that power progress

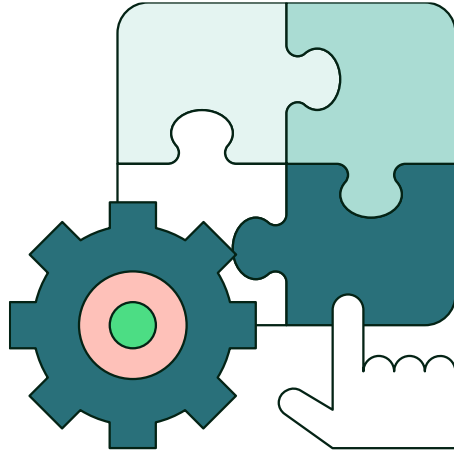
Kyndryl + Skytap + Microsoft

One Seamless Journey

Move Power workloads to an Opex billing model in Azure Cloud using Skytap's IaaS Platform and Kyndryl's end-to-end Power to Azure services, enabling Cloud Native and AI capabilities for applications on Power workloads in Skytap.



Kyndryl + Skytap Solution



GenAI Integration & Utilization

AI can be Enabled, Integrated, or fully Embedded with POWER data with CoPilot and GenAI capabilities and features



Digital Consumption Model

Shift from CapEx to OpEx model to drive department efficiency, agility, and modernize IT operations



Legacy Support and Refresh Risk Reduction

- Support for legacy hardware and OS
- Hardware Refreshes with Skytap and Microsoft



Comprehensive Secure & Compliant Platform

Backed by Azure's WAF and SLAs, and with Skytap's SOC1, SOC2, SOC3, ISO, PCI, and Pen Test compliance certs, Kyndryl's Skytap solution is the most compliant and secure POWER on cloud platform



On-Demand Cloud Scale

Cloud scalability, flexibility, agility, and global availability



POWER Expertise

- AIX & IBMi Expertise
- Largest footprint of managed POWER workloads



1

Fast, Scalable, & Non-Intrusive Discovery

Infrastructure inventory collection; basic performance, data protection, and HA/DR analysis

2

Cloud Fit & Suitability

Identify cloud value potential, risks and remediation early

3

Shaped Consumption Plan

Leverage OPEX cloud consumption model; Deliver the highest savings & ROI in Microsoft Azure

4

Defensible & Competitive Financials TCO-ROI

Validated cost models for on-prem and on-cloud findings

5

Consumable Roadmap & Wave Planning

Show how-to-consume – first, second movers (etc.)

What is Kyndryl Skytap Assessment*?

Kyndryl Skytap Assessments are designed to focus on LPARs/VMs running on IBM P Series, IBM i/AS400 and associated x86 in Customer's On-Premise Data center and make recommendations on infrastructure readiness for Skytap on Azure Cloud.

01

10 LPARs/VMs running on IBM P Series, IBM i/AS400 and associated x86 in Customer's On-Premise Data center

02

Assessment will be done based on Performance, I/O, Data Protection, Security and Compliance and HA/DR based data.

03

Analysis is based on questionnaire, customer interviews and tool-based (performance)

04

Assessment Report

05

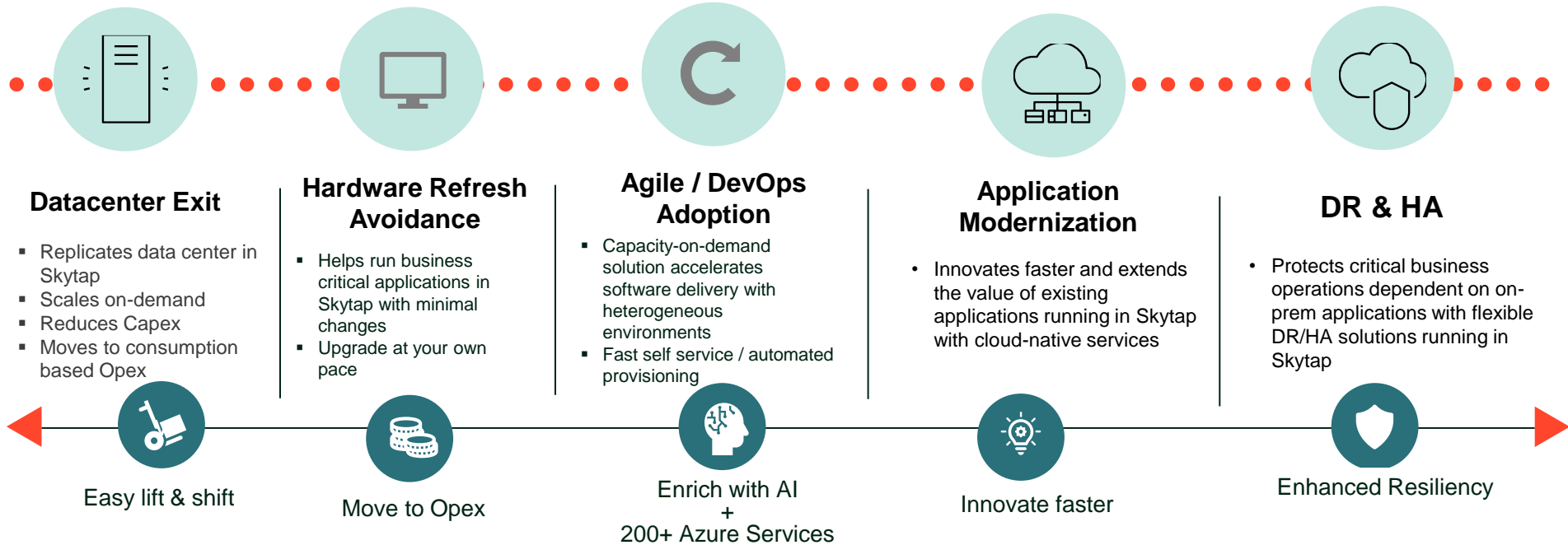
2 Week Engagement, can be done with Onshore (preferred) as well as Offshore resources

kyndryl

* The Skytap Assessment stage assumes that the Customer understand the key benefits of Skytap on Azure; Assessment Pre-requisites are covered as part of Pre-Sales



What are the typical Kyndryl Skytap Assessment triggers?



Kyndryl Skytap Assessment Approach



Data Collection

Cataloging Workloads:

Create a comprehensive inventory of all workloads running on IBM Power, IBM i/AS 400 and x86 Systems, including applications, databases, and associated dependencies.

Assessment:

Evaluate each workload based on factors such as performance requirements, dependency mapping, compliance needs, licensing requirements, HA/DR requirements and cloud compatibility.



Data Analysis

Architecture Compatibility:

Assess the compatibility of the workload's architecture with Skytap's environment, considering factors like operating system versions, middleware, and network configurations

Resource Requirements:

Determine the resource requirements for each workload, including CPU, memory, storage, and I/O, to ensure optimal performance in Skytap.



Assessment Report

Final Report which contains

- LPARs/VMs which can be moved to Skytap (Lift and Shift)
- LPARs/VMs which can be moved to Skytap post some minor architectural changes
- LPARs/VMs which cannot be moved to Skytap
- Right Size of the LPARs/VMs that needs to be migrated to Skytap

Key Data Collections during Assessment

Performance Based*

- Processor/Memory
- Storage I/O
- Network I/O

Data Protection*

- Requirements Discovery
- SLAs

HA/DR*

- RPO/RTO
- Cold vs. warm vs. hot solutions

Inventory and dependency mapping*

- Application dependency
- IBM/3rd party licensing
- Security and Compliance

Performance Guidance

- Historical/representative Data Collection
- Compute/Storage/Network performance analysis
- Performance Navigator Tool – Licensed version

Data Protection Guidance

- Third party tooling analysis on performance and data transit

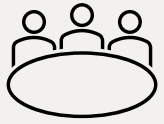
HA/DR Guidance

- Business Requirements Discussion
- Backup/Restore vs. Replication Solutions
- Solution vs. SLA verification

Inventory & dependency mapping Guidance

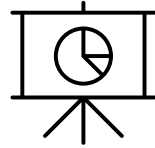
- Update inventory template with dependency mapping
- Update Security and Compliance template

How - Typical Kyndryl Skytap Assessment timeline & activities



Kickoff & Understanding

Build understanding of LPARs/VMs to be assessed.



Workshop and Analysis

Begin discovery and workshops and start analysis of key



Workshop and Analysis

Begin discovery and workshops and start analysis of key information



Findings, Recommendations and Report

Build a next step roadmap.

Kickoff & Understanding

1. Identify key points of contact and availability to support objectives.
2. Access to Customer environment and Performance tool
3. Understanding of 10 LPARs/VMs which need to be assessed

Day 1- (8 hours of client contribution)

Perform workshops/ observations

1. Data gathering
2. LAPRs/VMs/infrastructure logical architectures review

Day 2 - 7 (8-12 hours of client contribution)

Information Analysis and preliminary Findings documentation

Findings & gaps documentation based on Skytap migration fitment and documents analysis

Final Report

1. Issue final deliverables such as executive summary and final findings
2. Skytap on Azure readiness recommendations
3. Risk and remediation
4. Next steps

Day 8 -10 (4-6 hours of client contribution)

Mobilize

What & How?

Why?

kyndryl.

Thank You