



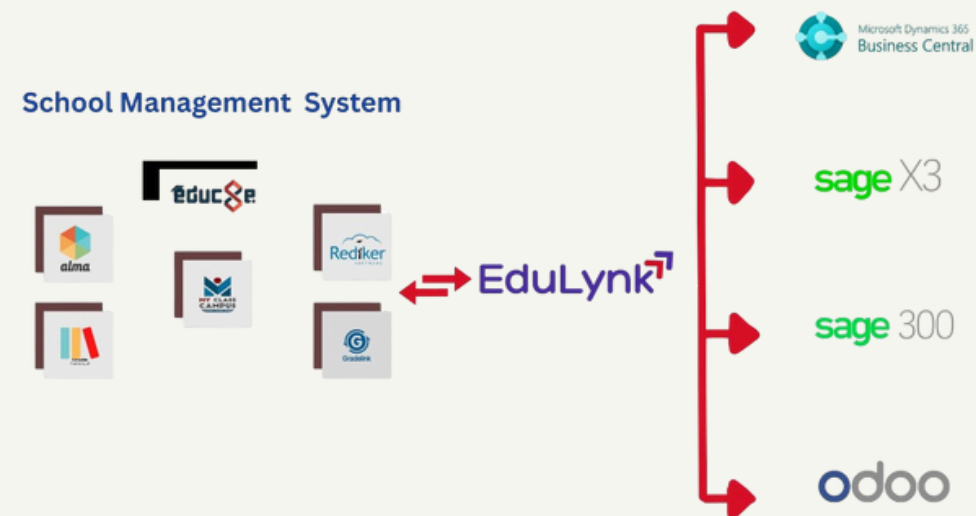
Are you tired of:

- Manually re-entering student billing and payment data?
- Dealing with error-prone spreadsheets and inconsistent records?
- Spending countless hours on financial reconciliation?
- Facing delays in generating critical financial reports?
- Struggling with a lack of detailed and accurate financial insights?
- Worrying about compliance risks due to fragmented financial tracking?

Introducing Edulynk

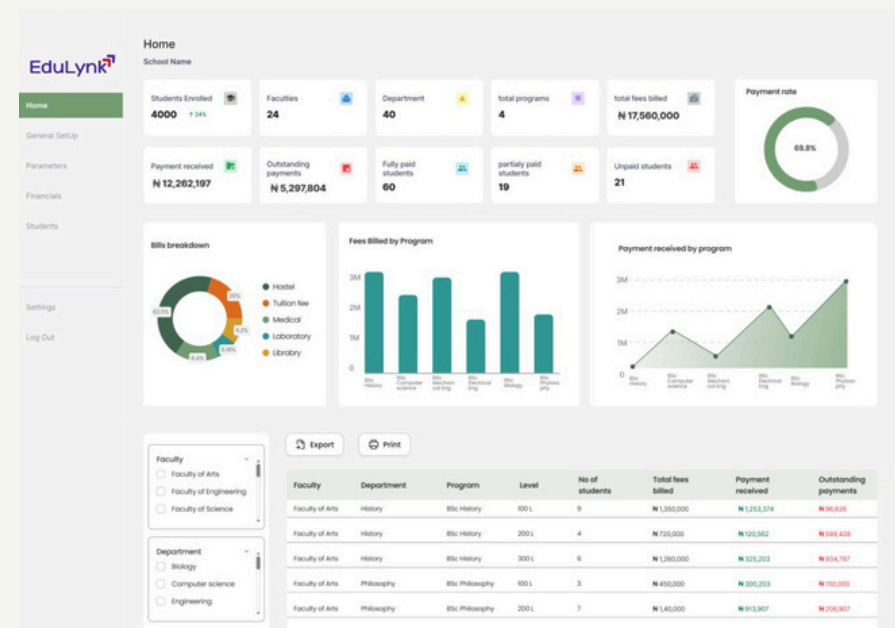
Edulynk is a powerful integration platform designed specifically for educational institutions to bridge the gap between your existing school management system and popular ERP software:

- Microsoft Dynamics 365 Business Central
- Sage 300
- Sage X3
- Odoo



Say goodbye to financial data chaos

Seamless Integration Between Your School Management System and Leading ERP Software



Who is Edulynk for?

Edulynk is designed to meet the needs of a diverse range of educational institutions, including secondary schools, vocational schools, and tertiary institutions, and also stakeholders such as:

- Bursars
- Finance directors
- School administrators
- IT managers, and
- Proprietors



Edulynk Advantage

- **Accurate Financial Records:** Eliminate manual data entry and ensure precise billing and payment data in your ERP.
- **Increased Efficiency:** Automate data synchronization, freeing up your staff for more strategic tasks and reducing operational costs.
- **Comprehensive Reporting:** Gain real-time visibility into your institution's financial health with detailed and timely reports.
- **Seamless Integration:** Effortlessly connect your current systems without complex manual processes or data reconciliation.
- **Enhanced Security:** Protect sensitive financial data with robust security measures, ensuring compliance and building trust allowing your institution to focus on its core mission while optimizing resource allocation.
- **Comprehensive Reporting:** Gain real-time visibility into your institution's financial health with detailed and timely reports. Edulynk provides comprehensive reporting capabilities that empower proactive management and informed decision-making.



Reports & Business Intelligence

It includes an intuitive drag-and-drop-powered report designer application for visually composing reports and a web server application for sharing reports. It warehouses standard reports for all the Edulynk modules and, in addition, allows end-users to design additional custom reports based on their management to interact with the system through intuitive dashboards with data visualization, enabling data-informed strategic decision-making.

The report modules support the following features:

- Users can drill down into data presented in table and matrix report items. This functionality greatly improves the readability of the data.
- Specific dashboard for each key process area admission, attendance, registration, etc. provides Microsoft office 365 integration
- Reports can be generated and emailed according to a schedule. The scheduling of reading, writing, and deleting reports.
- A flexible permission scheme controls access
- to reading, writing, and deleting reports
- The built-in HTML5 RDL Report Viewer control lets users view reports from within the browser.
- The RDL reports can be exported to pdf, word, html file formats



Key Benefits

- **Automated Data Synchronization:** Say goodbye to manual data re-entry compliance.
- **Real-Time Financial Insights:** Access up-to-date reports for proactive management.
- **Reduced Errors & Improved Accuracy:** Ensure reliable financial records for better decision-making.
- **Time & Cost Savings:** Streamline processes and optimize resource allocation
- **Real-Time Financial Insights:** Access up-to-date reports for proactive management.
- **Scalable Solution:** Adapts the needs of schools/universities



FAQ

Q: Will Edulynk work with my browser?

A: Edulynk is browser agnostic; it will work with all browser types and is responsive on mobile devices.

Q: Can I deploy Edulynk in the cloud rather than on my premises?

A: Yes, it can be deployed on the premise or in the cloud.

Q: If we have campuses in different cities or nations, do I need to get a license for each location?

A: A school entity only needs a single license to run at any of its campuses. What will be required is the provision of network infrastructure linking those campuses together.

Q: How long will it take to implement the system?

A: A typical higher institution can be implemented in sixty days from commencement to Go-live

💰 Pricing

Pricing is based on the school, student population, and modules selected.



How to engage:

Learn more: www.lagetronix.com/edulynk,
Call for more information:
+2348022907805, 02018870084, 02018880031
sales@lagetronix.com

EduLynk⁷