

# Cloud Foundations

**LAUNCH CONSULTING**  
2025



# Why is a Cloud Foundation Important?

A **solid cloud foundation** is critical for companies because it ensures their cloud adoption is secure, scalable, cost-efficient, and ready to support innovation. Without a well-architected foundation, businesses risk inefficiencies, security vulnerabilities, compliance gaps, and operational bottlenecks that can hinder their ability to fully leverage the cloud's benefits.

- 1. Security & Compliance** - A strong foundation enforces identity management, data protection, and regulatory compliance, reducing security risks and ensuring governance.
- 2. Scalability & Flexibility** - A well-architected cloud environment supports business growth, enabling companies to scale resources up or down based on demand without performance issues.
- 3. Cost Optimization** - Properly designed cloud foundations help organizations control costs, eliminate waste, and maximize return on investment through automation and cost governance tools.
- 4. Operational Efficiency** - With standardized processes, automation, and monitoring in place, IT teams can manage infrastructure more effectively, reducing downtime and improving performance.
- 5. Innovation & AI Readiness** - A cloud foundation enables companies to rapidly adopt AI, analytics, and modern applications by providing the necessary infrastructure and data frameworks.

By investing in a solid cloud foundation, companies ensure that their cloud journey is built for long-term success, enabling them to move faster, reduce risk, and maximize the value of their cloud investments.

# What Drives the Value?

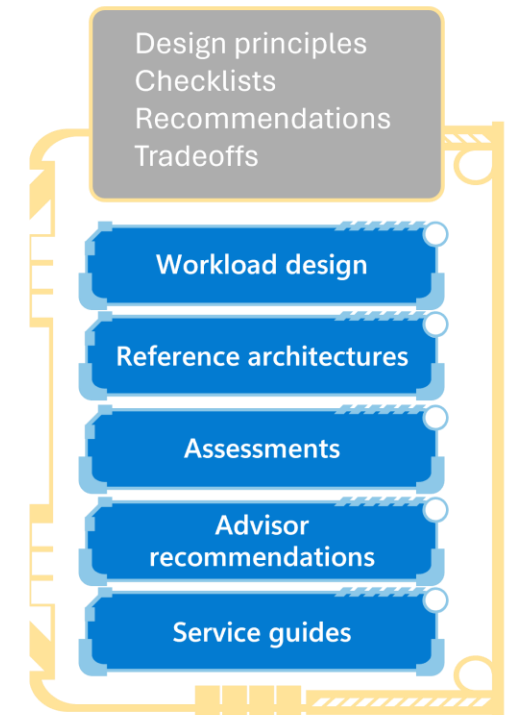
## TOP 5 BENEFITS OF ADOPTING ENTERPRISE LANDING ZONE

1	<b>Growth</b>	All the coolest, latest and greatest stuff is in cloud
2	<b>Save Costs</b>	Operational efficiency associate with maintenance and automation. Auto Detection/Auto Remediation. Costs are out of control
3	<b>Increase Productivity</b>	AI Ops, Agentic Frameworks, Process Automation for Infrastructure management. Developer Experience
4	<b>Reduce Risk</b>	Better instrumentation, cyber defense, logging. Perimeter Defense, penetration testing. Continued Accelerators and Compliance Centers configured with Guardrails for CSPM
5	<b>Customer, Employee Partner Experience</b>	Delivery killer apps and mobile experiences faster

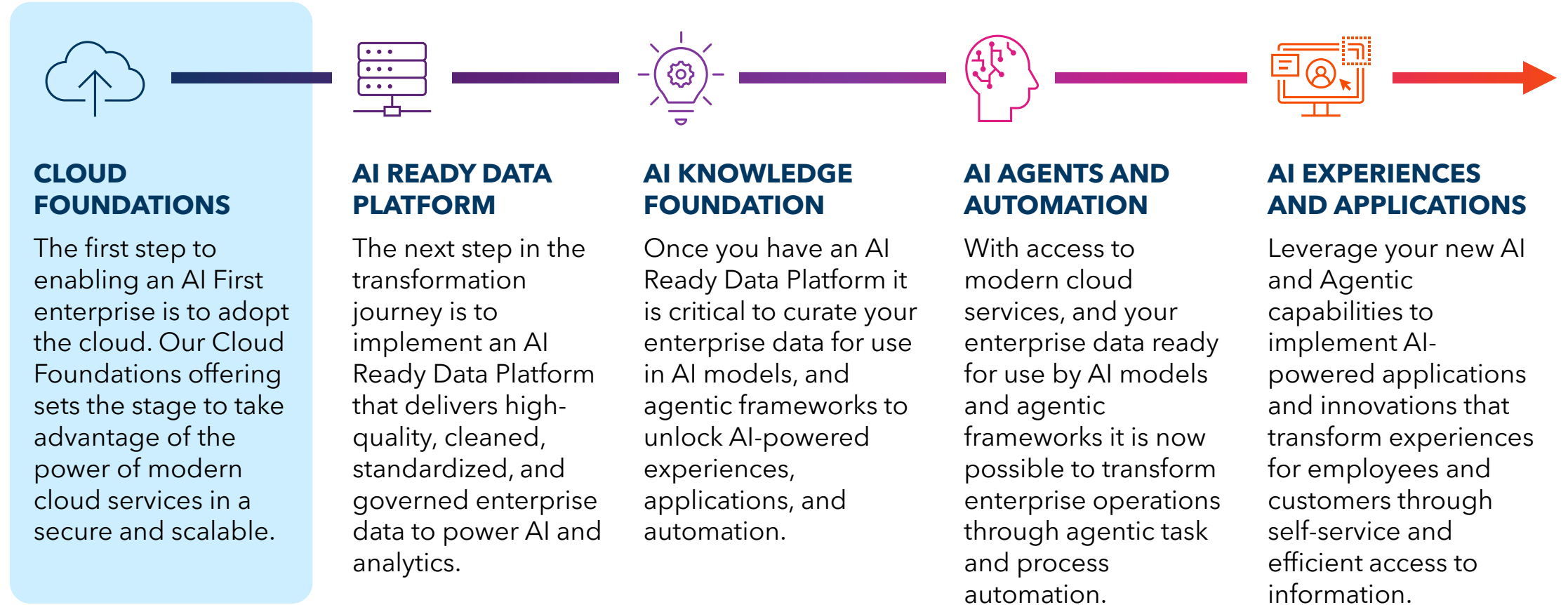
# Cloud Foundations - Well Architected

## DESIGN WORKLOADS THAT ACHIEVE BUSINESS VALUE OVER TIME

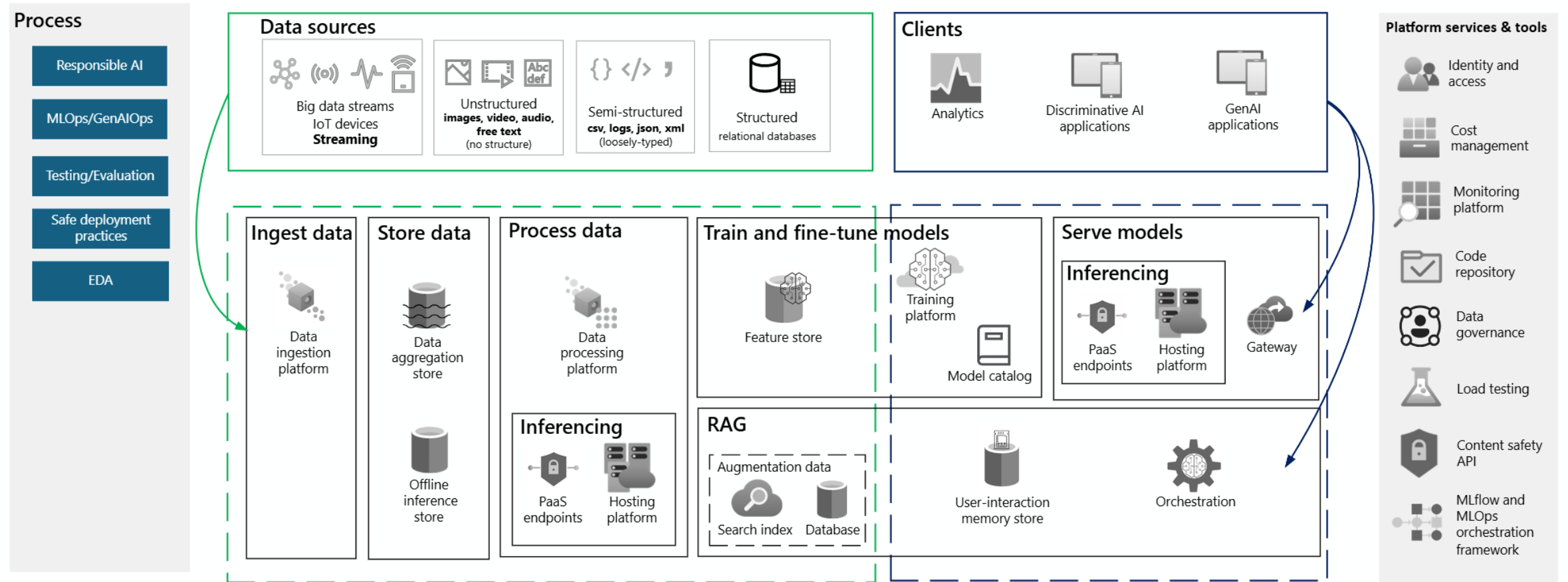
As solution architects, you want to build reliable, secure, and performant workloads that maximize the value of investment in the infrastructure. Start with the Pillars and align your design choices with the principles. Then, build a strong foundation for your workload based on technical design areas. Finally, use review tools to assess your readiness in deploying to production.



# Solid Foundational Approach



# Cloud Foundations Framework



# Let's begin

# launch

