

TRANSFORMING HOW TOMORROW'S PROJECTS ARE DESIGNED AND BUILT

Next Generation Construction Management Platform

FulcrumHQ is a next-generation **common data environment (CDE)** and cloud-enabled **Digital Twin** for collaboration and coordination on large-scale **construction projects**.

AI-Powered BIM + GIS Collaboration

World-leading 3D collaboration, saving significant time and money by avoiding rework, delays, and identifying buildability and quality issues before they happen.

Who we Support

We work with **owners, contractors, architects, and engineers** to supercharge their projects, from design to operation.

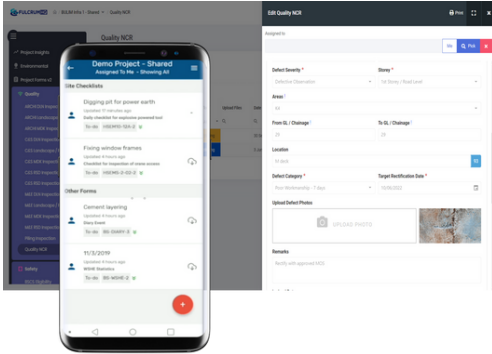
- **Commercial**
- **Airports**
- **Roads**
- **Rail**
- **Defense**
- **Manufacturing**
- **Energy & Resources**
- **Industrial**

GET IN TOUCH

sales@leapthought.com
www.leapthought.com

520 Kirkland Way,
Ste 400
Kirkland, WA 98033

LEAPTHOUGHT



Effortless Collaboration

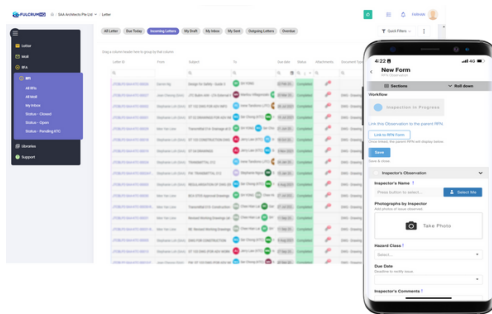
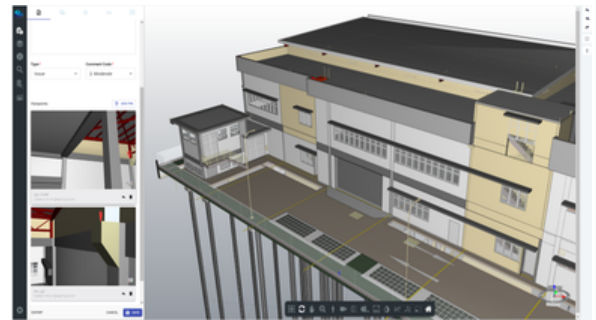
Collaborate effortlessly in the cloud with configurable workflows and integrated document management

- Digital Transmittals, Submittals, Approvals, and RFIs
- Realtime cloud-based collaboration, fully BIM-integrated
- No-code workflows with high configurability
- The world's best ICE meetings

AI-Powered BIM + GIS Checking and Visualization

Federate and interrogate BIM models in your browser and collaborate in real time

- Visual BIM interrogation and version comparison
- Automated BIM quality checks
- Ensure EIR and AIR standards are met
- State-of-the-art algorithmic checking for model quality and regulatory compliance



Comprehensive Site and Field Management

Seamlessly connect the office with the field using digital forms, checklists, and BIM access

- Digital RFIs
- Digital QA/QC Checks
- Digital Safety Management
- Digital Defects Management

GET IN TOUCH

sales@leapthought.com
www.leapthought.com

520 Kirkland Way,
Ste 400
Kirkland, WA 98033

LEAPTHOUGHT