



CIRERA
24.90
KIB

SITAKE
9.90
KIB

CHAMPI
3.69
KIB

CAMPESIN
5.90
KIB

34.90
KIB

NEURGOLD
64.90
KIB

Agro-commodity pricing platform

By Lotus Beta Analytics



Introductions

Agricultural commodity prices are an indicator of changes in supply and demand, and as such, can detect abnormal conditions that need to be brought to attention. An agricultural commodity pricing portal is a specialized platform that provides users with real-time and historical pricing information for various agricultural products. These portals are valuable tools for farmers, traders, processors, retailers, and other stakeholders in the agricultural industry. An agricultural commodity pricing platform can play a pivotal role in optimizing operations, reducing risks, and fostering growth and profitability across the agricultural industry. By facilitating data-driven decision-making and providing valuable market insights, the platform becomes an indispensable tool for businesses operating in this sector.

This solution plays a key role in monitoring, analyzing and disseminating food price data along the food supply chain, from producer to consumer.

The solution will deliver the following :

- Better price and bargaining power to farmers
- Access to more markets for buyer
- Increase competitiveness
- Establish quality assaying systems
- Real time information of prices/trade
- Transparent and quick financial transactions

The Challenge

The agriculture industry is highly volatile, and pricing is subject to various factors such as weather, demand and supply.

Agricultural Commodity Pricing Portal can help mitigate these challenges by providing real-time pricing information that can inform farmers, traders and buyers on market trends.



The Solution

Lotus Beta Analytics has partnered with NIRSAL to develop a solution that is one-stop-shop for all agricultural commodity pricing needs. With real-time information, customizable alerts and expert analysis, users will be able to make informed decisions and stay ahead of the competition.. The solution has the following features:

1. Comprehensive Coverage including staple crops (e.g., wheat, rice, corn), cash crops (e.g., coffee, cocoa, cotton), livestock (e.g., cattle, hogs), and other produce (e.g., fruits, vegetables).
2. Real-time Price Updates
3. Historical Price Charts with various timeframes (daily, weekly, monthly, yearly)
4. Regional Prices
5. Price Analysis Tools.



The Solution features- contd



1. Price Analysis Tools.
2. Market News and Analysis.
3. Weather Information.
4. Supply and Demand Data.
5. Seasonal Price Trends.
6. Price Alerts.
7. Interactive Maps that display crop cultivation areas and production regions.
8. Quality and Grading Information.
9. Educational Resources.
10. Mobile Compatibility.
11. User Accounts and Customization.
12. API Integration.
13. Data Exporting.
14. Secure and Reliable.

The Solution Capabilities



Inclusive Identity

A secure, unique identifier that enables an individual to be identified in order to receive critical services like healthcare and aid delivery.



Wallet Service

Provide users with a single wallet for multiple products and data.



POI Service

A mobile app that enables transactions and payment acceptance both online and offline.



Data Service

Secure data management and aggregated and anonymized data analytics to provide critical insights

The Solution Capabilities - contd



Designed for remote communities

Built to overcome barriers — such as inconsistent power and connectivity.



Safe and secure

Leverages the highest standards of privacy and data security to give individuals control of their information.



Interoperable infrastructure

Designed for use across sectors, services providers and third-party solutions — all via a shared digital infrastructure.



Seamless user experience

Provides intuitive, digital solutions to drive access and inclusion among remote communities.

The Solution delivery Timeline

September 2023: Daily usage > 10,000 users on the platform



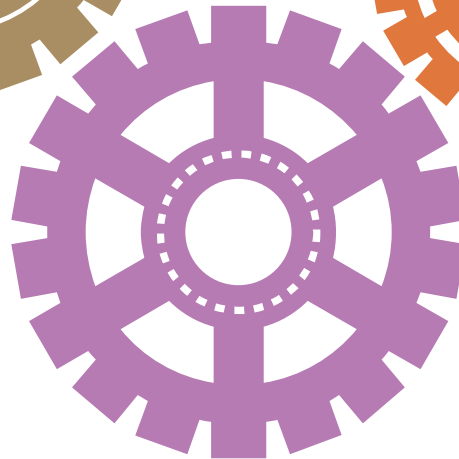
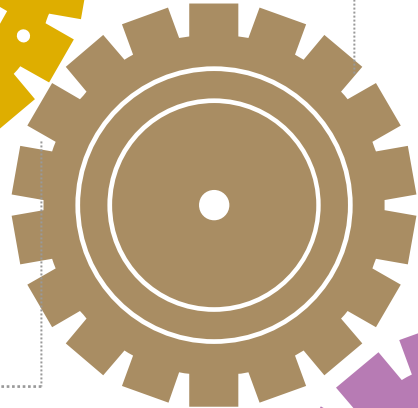
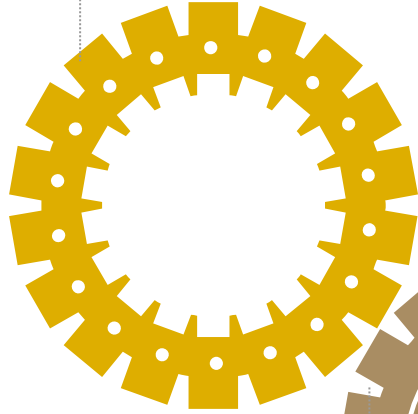
January 2023 Mobile App portal live in 3 languages

January 2023 Add at least 500 users on the platform

June 2023 Have 1000 users on the platform

March 2023: Have 100 users using the platform API

14th September 2023: Lunch in 60 markets across 36 States



The Ask!

**We seek to partner
with you to drive
the value into the
addressable
market**



Thank You

ademola@lotusbetaanalytics.com