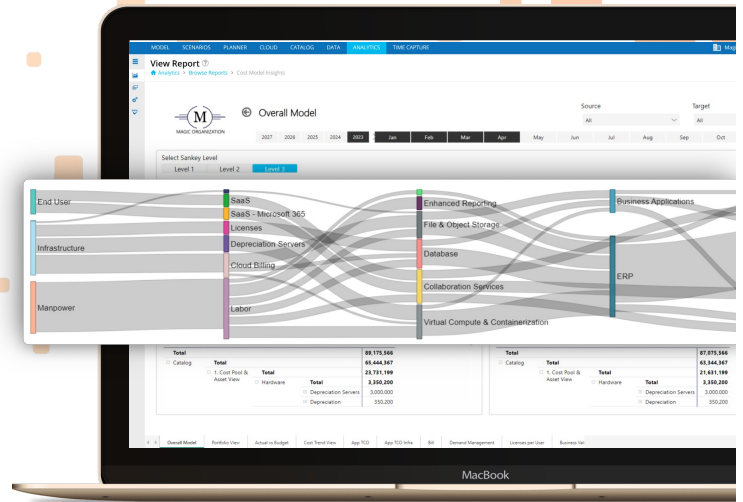




Know Your Numbers

# ITFM Capabilities



Operating at the convergence of ITFM, FinOps, and shared services, MagicOrange provides crystal-clear line of sight into expenses and cost-drivers. With clear line of sight comes indisputable traceability, accountability, and the data necessary to drive profitability and investment decisions.

## Consolidate Your Data

- Ditch the spreadsheet sprawl and embrace a single, unified, and accurate source of IT investment and expense data.
- Alleviate errors, repetitive manual tasks, rebalance team
- deployment, and gain better data confidence.

## Deconstruct Spend

- Analyze technology costs across all pools and sub-pools, revealing granular detail and potential anomalies.

## Uncover Cost Anomalies

- Compare internal spend against benchmarks and historical trends, pinpointing outliers like excessive external labor or under-capitalized assets.

## Unveil True Costs

- Shine a light on IT consumption with Showback, raising awareness for and fostering collaboration with IT and business units.
- Implement a fair and accurate Chargeback process and generate invoices based on actual usage by distinct lines of business

## Drive Smarter Spending

- Leverage budget variances and historical data to inform data-driven decisions for targeted adjustments and strategic planning.

## Control and Optimize Resources

- Fine-tune consumption patterns, optimize resource allocation, and fuel sustainable growth for your IT services.

“The MagicOrange team fully delivered on our challenges and exceeded our expectation in the way their experts understand and care for our business success”

—Marlize van der Westhuizen, Head of Finance: Infotec and Logistics Divisions  
The Foschini Group



---

### Enable Variable Pricing

- Develop dynamic pricing strategies to be flexible with shifting demand, customer segments, and service features.
- Maximize profitability, optimize value for customers, and fuel your IT ecosystem’s growth

---

### Unleash the Full Potential of Your Resources

- Leverage hardware and network efficiently and empower scalability for future growth.
- Embrace new technologies and digital transformation projects with confidence.

---

### Future Proof Your Foundation

- Analyze capabilities, optimize resources, and craft strategies for secure, scalable, and high-performing IT organization that keeps pace with your ambitions.

---

### Empower Smart Investments

- Leverage data-driven insights to invest strategically into those IT services that can help ensure the optimal resource allocation.
- Uncover cost-saving opportunities throughout the lifecycle, improve budget planning, and utilize IT funds effectively.

---

### Drive Profitability

- Identify cost-saving opportunities, optimize resource allocation, and ensure your investments deliver maximum value throughout their service lifecycle.
- Compare lines of business, product families, or individual offerings to reveal hidden costs and areas for optimization.

“The MagicOrange team truly earned my trust, and nothing was ever a problem for them. That stands out for me in my 30 years of experience in the IT industry.”

—Mariana Bredenkamp, Principal Enterprise Architect at Exxaro

## Resource and Time Management

- Efficiently forecast and track time spent on projects and gain real-time visibility on team status and cost.
- Provide credibility to service charges by detailing hours spent towards the completion of projects and initiatives.
- Automatically integrate resource and time allocations into the organization’s cost allocation model.
- Assign tasks and monitor project deadlines with easy-to-use submission / approval workflows.

## Best-in-Class Reporting Engine

- Leverage the Microsoft Power BI analytics platform to develop interactive and compelling visualizations using common already in-house skills.
- Create comprehensive reports using the multi-dimensional modelling engine.
- Synthesize large volumes of data to measure ROI across product families, strategic initiatives, and geographical regions.

## Flexible Cost Modeling

- Categorize and associate general ledger, asset management, and inventory data with any product and service.
- Process unlimited volumes of data within the most complex allocation schemas.
- Understand front-to-back costs and direct spend to business initiatives at scale including reciprocal and recursive costing.
- Provide a seamless experience for employees to understand the full range of services provided to the business.
- Facilitate highly transparent service definition, service owner, and cost-of-service mapped to the ‘Bill of IT’.

## Cloud Cost Management

- Leverage cloud providers’ native tagging and an overlay of allocation tags for greater transparency and reporting.
- Enable highly granular Showback and Chargeback methodologies across on-premises, private and public cloud resources.
- Manage privileges and role-based access control for users and groups allowing for fully customizable experiences.
- Align to the TBM Taxonomy for all Cloud Services, with more than 60,000 services mapped to ITFM.

## Budgeting and Forecasting

- Create commercially accurate and relevant budgets, forecasts, and ‘What-If’ scenarios rapidly and at scale.
- Integrate your organization’s cost model, providing multi-dimensional views of spend across various stakeholders.
- Reduce time spent gathering information during budget and forecast cycles.
- Effortlessly ingest spreadsheet data into a fully customizable layout for easy data management and analysis.



**BOOK A DEMO**  
[magicorange.com](https://magicorange.com)

